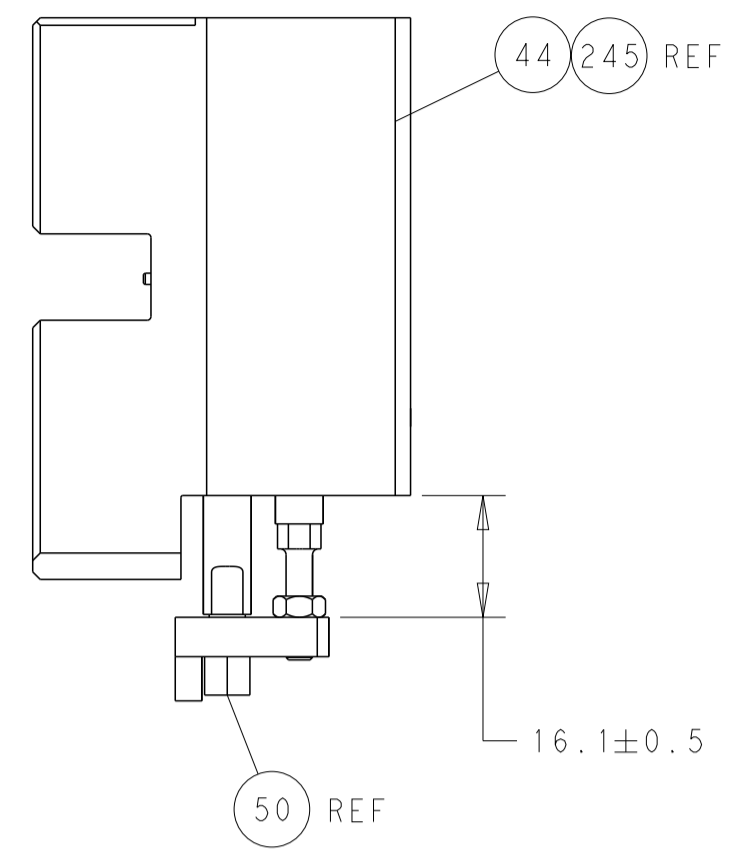
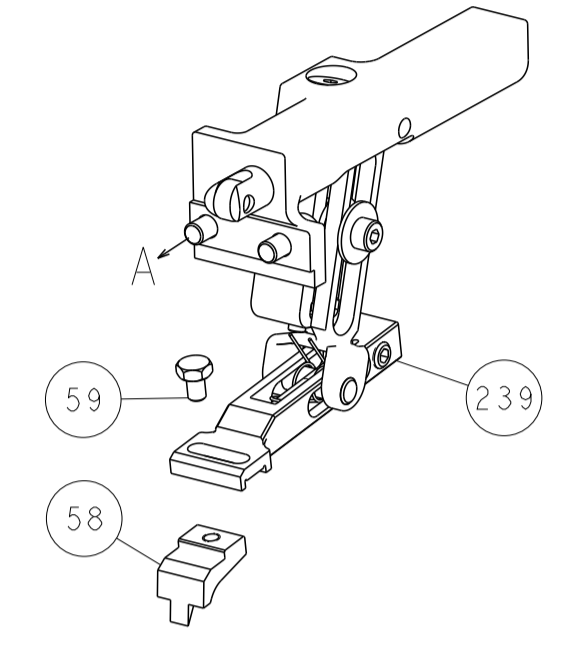


| LOC | DIST | REV | DESCRIPTION | DATE | OWN | APVD |
|-----|------|-----|-------------|------|-----|------|
| A | 66 | | SEE SHEET 1 | | | |

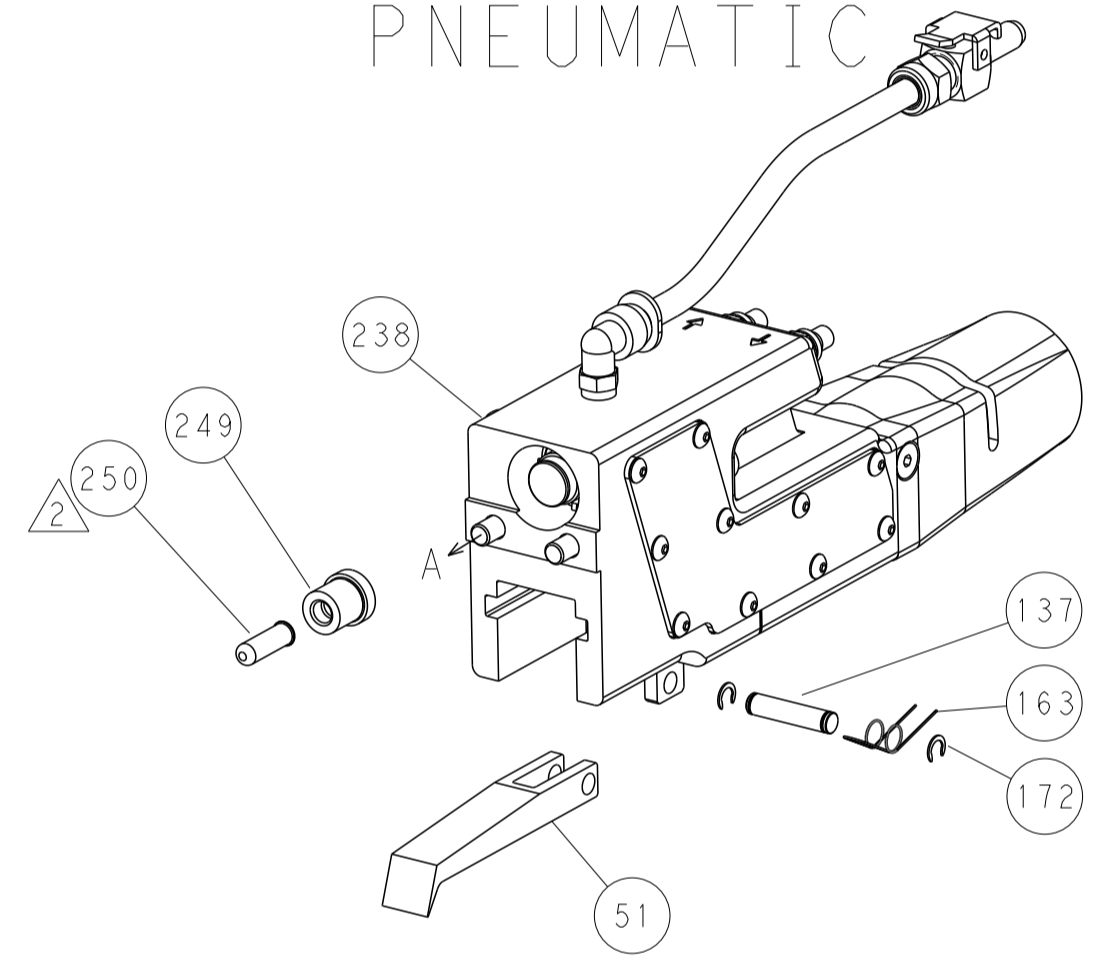


HOLDDOWN SET-UP

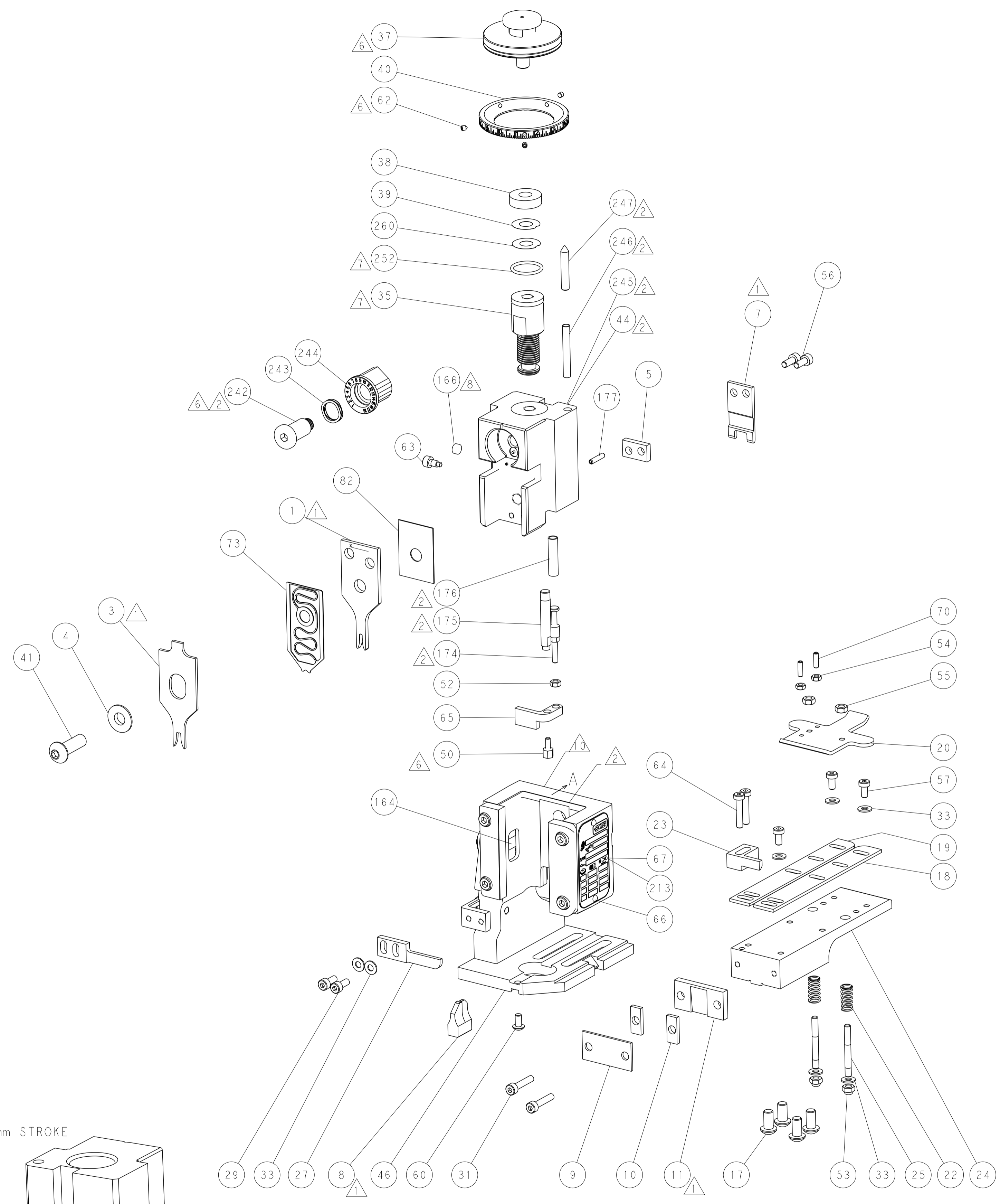
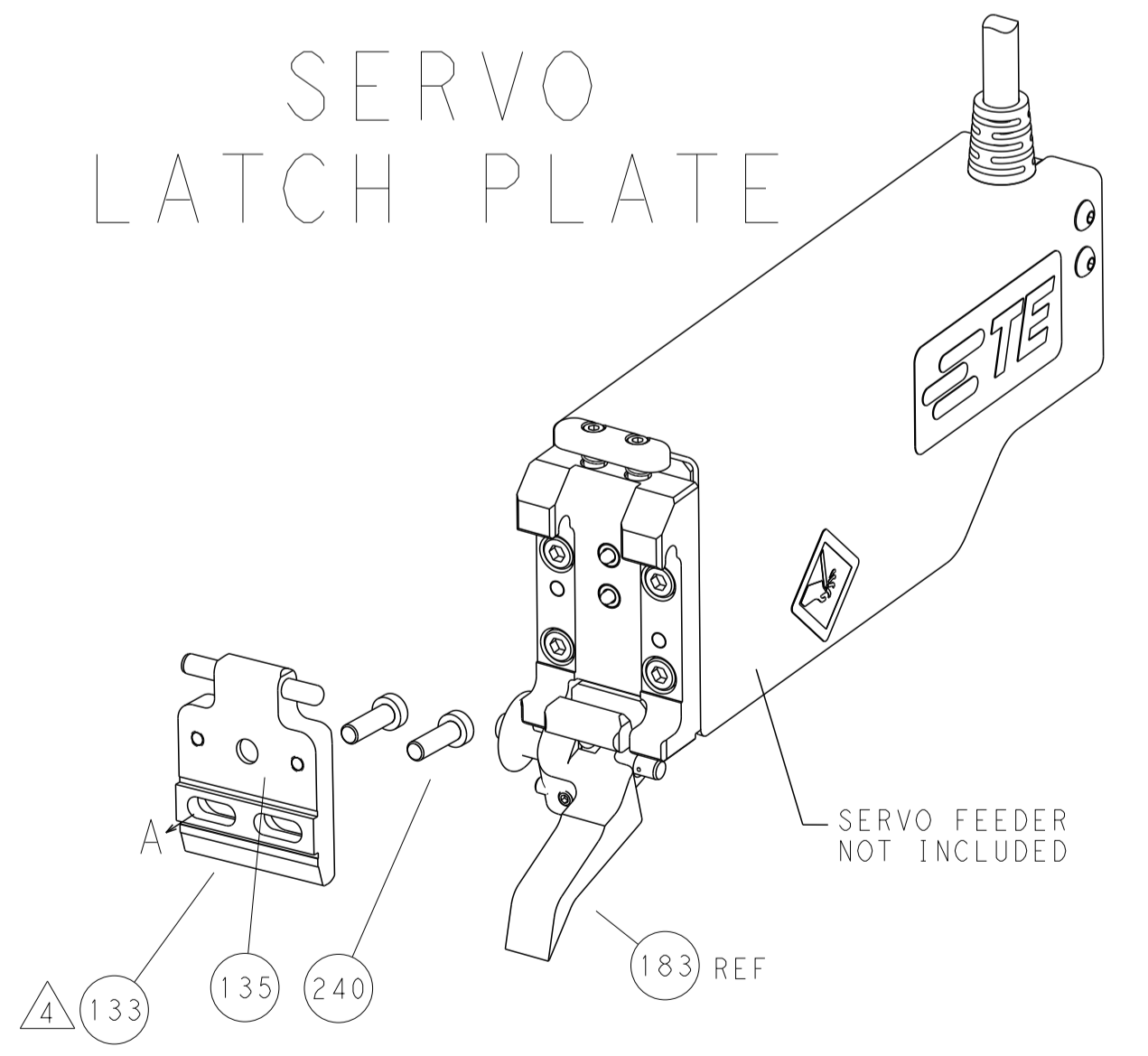
FEED TYPE
MECHANICAL



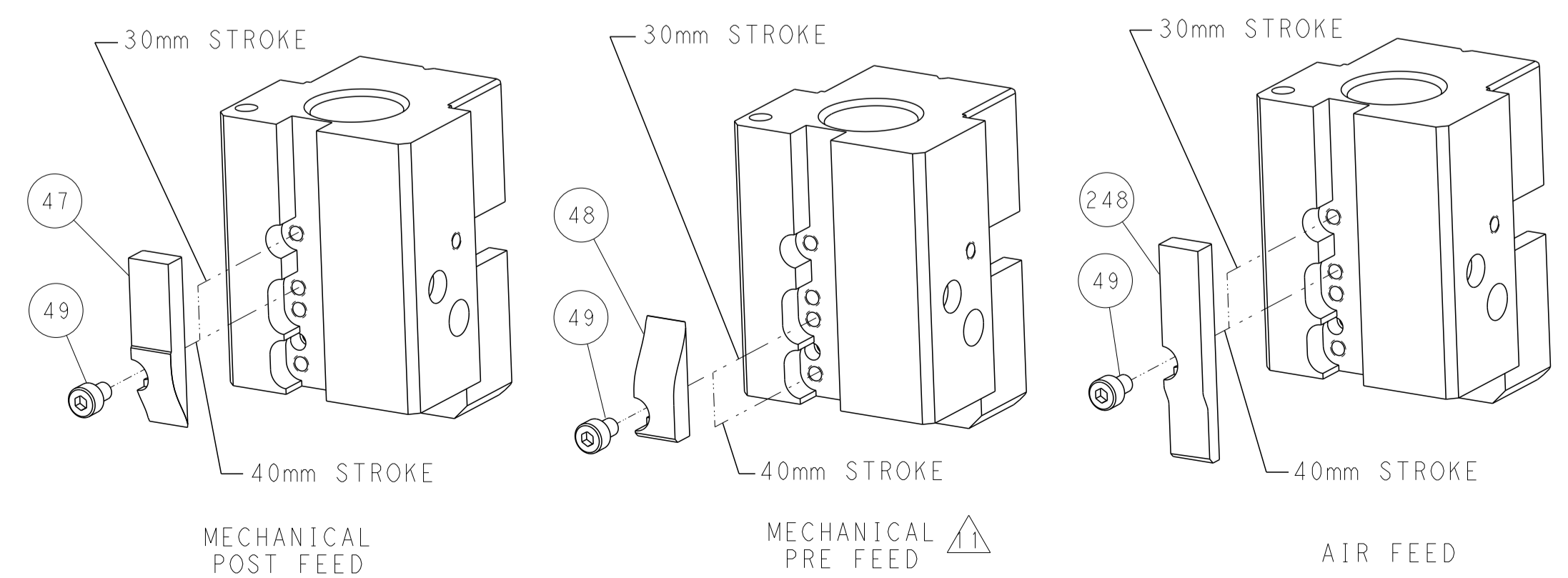
PNEUMATIC



SERVO
LATCH PLATE



CAM POSITIONS



ATLANTIC VERSION
 Shown on sheets 1 of 4 & 2 of 4
 (Pacific version shown on sheets 3 of 4 & 4 of 4)

| | | | | | | | |
|-----------------------|--|---|--|---|--|---|--|
| DIMENSIONS: mm | | TOLERANCES UNLESS OTHERWISE SPECIFIED: 0 PLC ± 1 PLC ± 2 PLC ± 3 PLC ± 4 PLC ± ANGLES ± FINISH | | DWN: HOFFNER 10MAY2013 CHK: T. ELBIN 13MAY2013 APVD: T. ELBIN 13MAY2013 PRODUCT SPEC APPLICATION SPEC WEIGHT Customer Accessible Production Drawing | | NAME: Ocean End Feed Applicator SIZE: A1 CAGE CODE: 00779 DRAWING NO: C=2150342 SCALE: 1:1 SHEET: 2 OF 4 REV: B | |
|-----------------------|--|---|--|---|--|---|--|

Table with columns: PART NUMBER, REVISION, DESCRIPTION, FEED TYPE, CONVERT TO, PART NUMBERS REQUIRED. Includes an image of the applicator and a detailed conversion chart.

Table titled 'APPLICATOR DATA' with columns: CRIMP, SIZE, TYPE. Includes 'APPL INSTRUCTIONS 408-10390' and a standard symbol.

Table titled 'TERMINAL DATA: TE TERMINAL TE CRIMP SPECIFICATION'. Includes 'TERMINAL NAME: 110 SERIES FASTON RECEPTACLE' and 'TERMINALS APPLIED' sub-table.

Table titled 'WIRE SIZE' with columns: WIRE SIZE, CRIMP HEIGHT mm [INCH], CRIMP HEIGHT REFERENCE SETTING. Includes wire size diagrams.



- RECOMMENDED SPARE PARTS
GREASE BEARING SURFACES LIGHTLY
LUBRICATE DAILY PER THE APPLICATOR INSTRUCTION SHEET SUPPLIED WITH THE APPLICATOR.
APPLICATOR SPECIFIC DATA TO BE ENTERED INTO BLANK MEMORY CHIP AT ASSEMBLY. SEE BELOW FOR PART NUMBER:
MECHANICAL FEED WITH "SMART APPLICATOR" CONVERSION: 8-2150342-4
PNEUMATIC FEED WITH "SMART APPLICATOR" CONVERSION: 8-2150342-4
SERVO FEED WITH "FINE CRIMP HEIGHT ADJUST": 8-2150342-5
ADJUSTMENT OF THE STRIPPER MAY BE REQUIRED WHEN MOVING THE APPLICATOR BETWEEN BENCH AND LEADMAKER APPLICATIONS.
APPLY PART NUMBER 1-23419-5 LOCTITE TO THREADS OF ITEMS 50 & 62.
APPLY PART NUMBER 2-23419-6 LOCTITE TO THREADS OF ITEM 242.
GREASE THREADS, GROOVE AND O-RING ON ITEMS 139 & 153.
MAGNET, ITEM 166 MUST BE ORIENTED CORRECTLY IN ORDER TO PROPERLY ACTUATE THE COUNTER.
CRIMP HEIGHT REFERENCE SETTING WAS THE SETTING USED WHEN THE APPLICATOR WAS QUALIFIED AT THE FACTORY. ADJUSTMENT MAY BE NECESSARY WHEN RUNNING APPLICATOR IN THE FIELD.
SPARE FEED CAM STORAGE LOCATION REFER TO INSTRUCTION SHEET FOR ADDITIONAL INFORMATION.
THE RECOMMENDED SET-UP FOR END FEED APPLICATORS IS POST-FEED WITH ITEM 2119653-1. THE APPLICATOR CAN BE CONFIGURED FOR PRE-FEED WITH ITEM 2119652-1 BUT MAY ENCOUNTER PROBLEMS WITH SOME APPLICATIONS. FEED ISSUES OR TERMINAL JAMMING MAY OCCUR IN THE PRE-FEED CONFIGURATION.

*WARNING
ON INSTALLATION, SET WIRE DISC, ITEM 40 TO LARGEST WIRE SIZE SETTING. USE OF SETTINGS BELOW MINIMUM REQUIRED CRIMP HEIGHT SETTING WILL CAUSE DAMAGE TO CRIMP TOOLING.

Table with columns: PART NO, DESCRIPTION, ITEM NO. Lists various components like FINE ADJUST HEAD ASM, PUSH ROD, AIR FEED, BUSHING, etc.

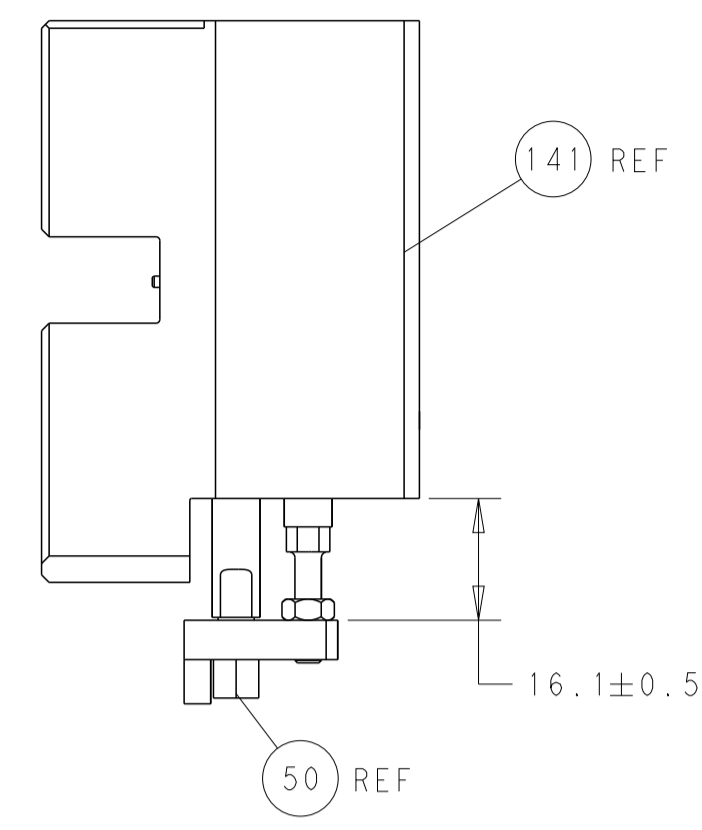
PACIFIC VERSION
Shown on sheets 3 of 4 & 4 of 4
(ATlantic version shown on sheets 1 of 4 & 2 of 4)

Table with columns: SET UP GAUGE, DIST, REVISIONS. Includes '2119599-2' and 'A 66'.

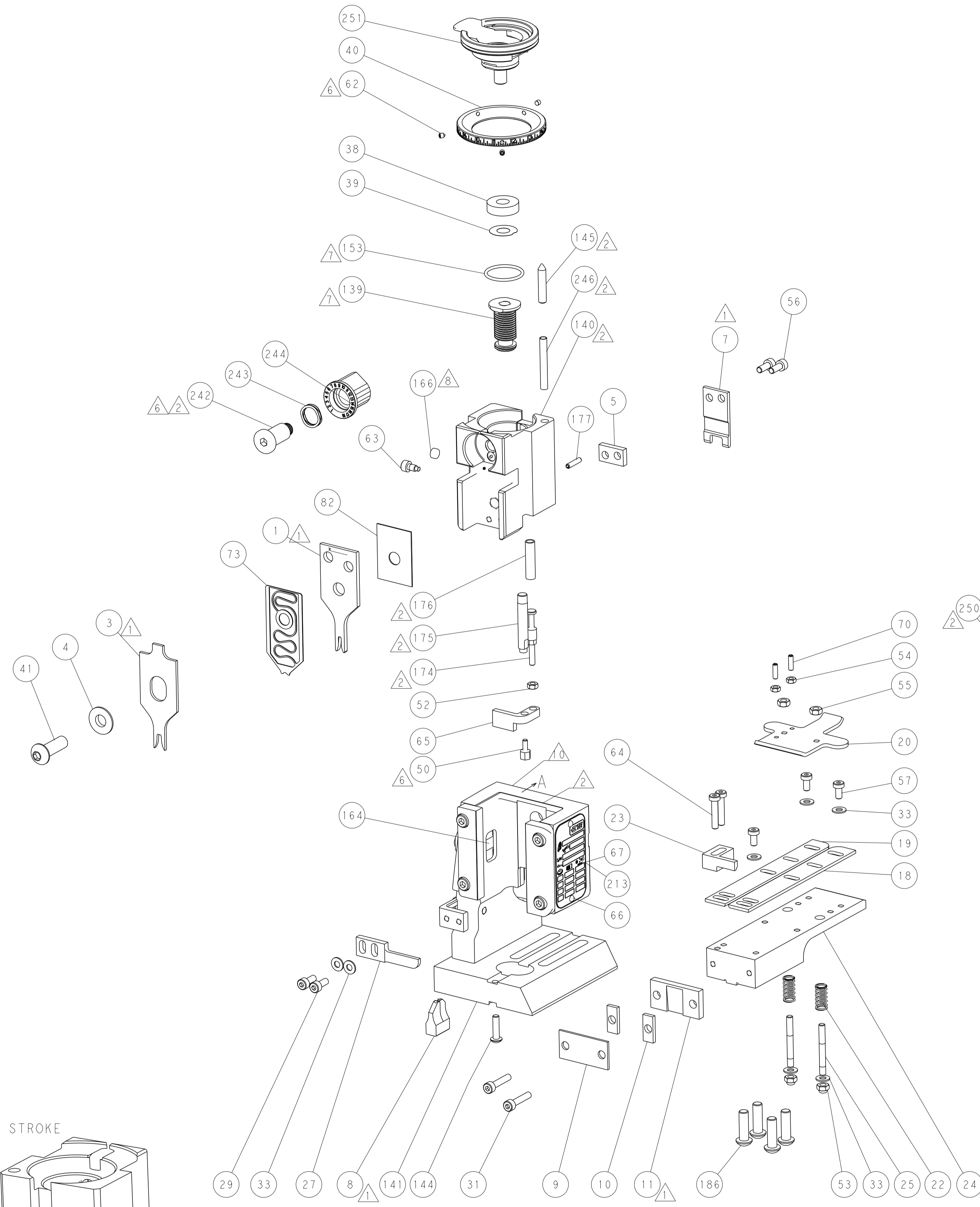
Main parts list table with columns: P, LTR, DESCRIPTION, DATE, QTY, UOM, APVD. Lists hundreds of components with their quantities and specifications.

Table with columns: DIMENSIONS, TOLERANCES UNLESS OTHERWISE SPECIFIED, MATERIAL, FINISH, WEIGHT, SCALE, SHEET 3 OF 4. Includes technical drawing and drawing specifications.

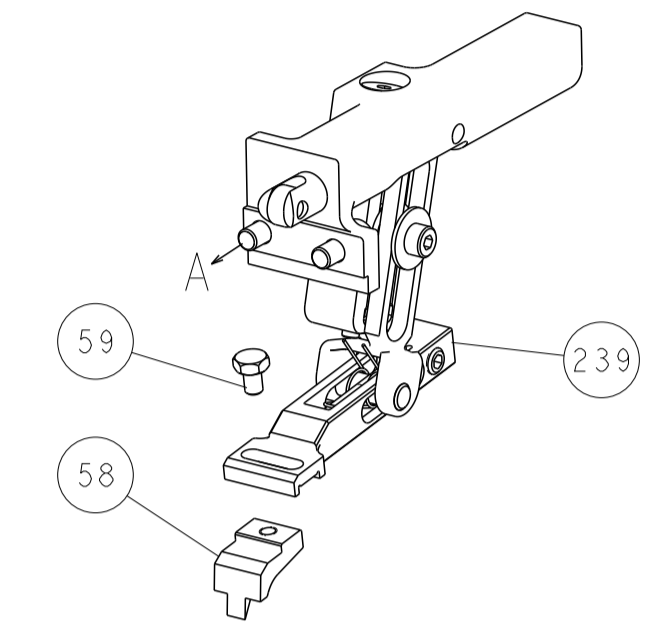
| LOC | | DIST | | REVISIONS | | | |
|-----|----|------|-----|-------------|------|-----|------|
| A | 66 | P | LTM | DESCRIPTION | DATE | OWN | APVD |
| | | - | | SEE SHEET 1 | | | |



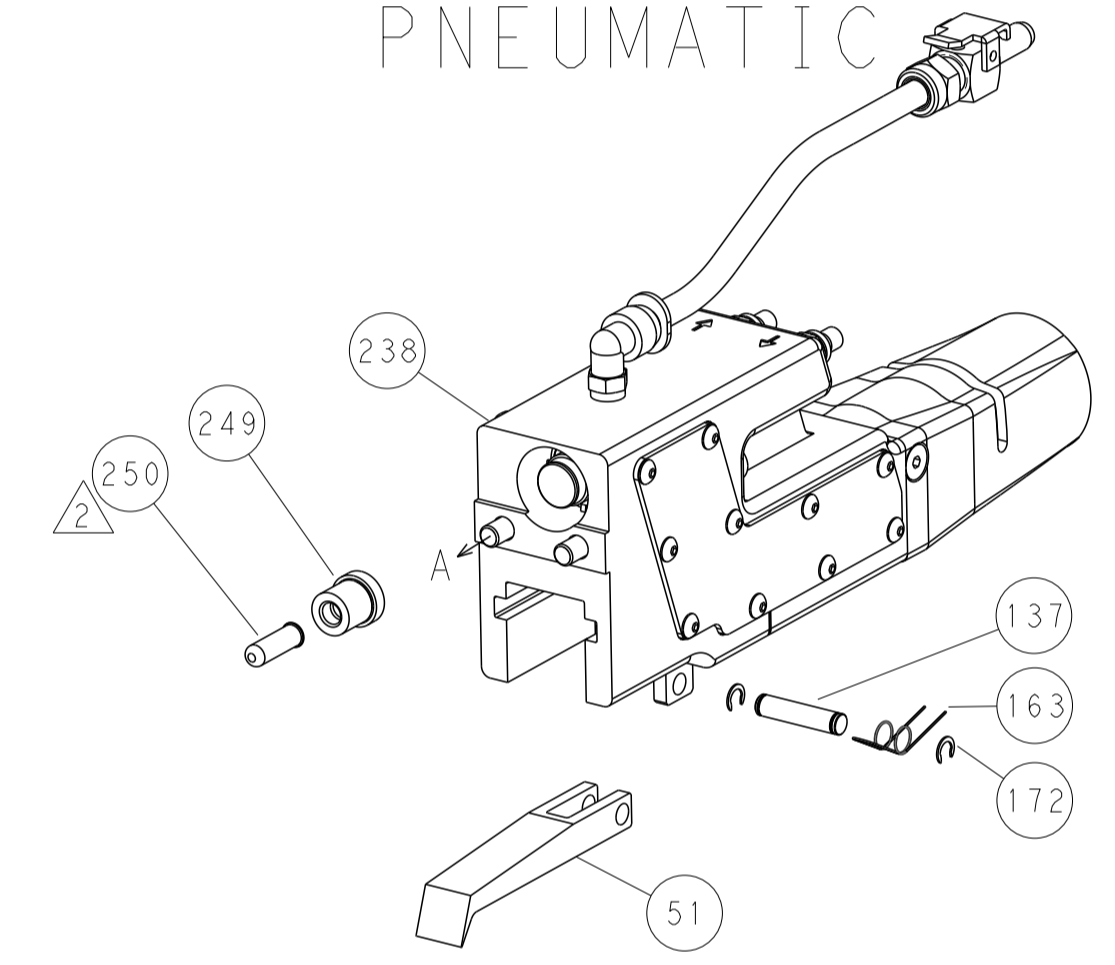
HOLDDOWN SET-UP



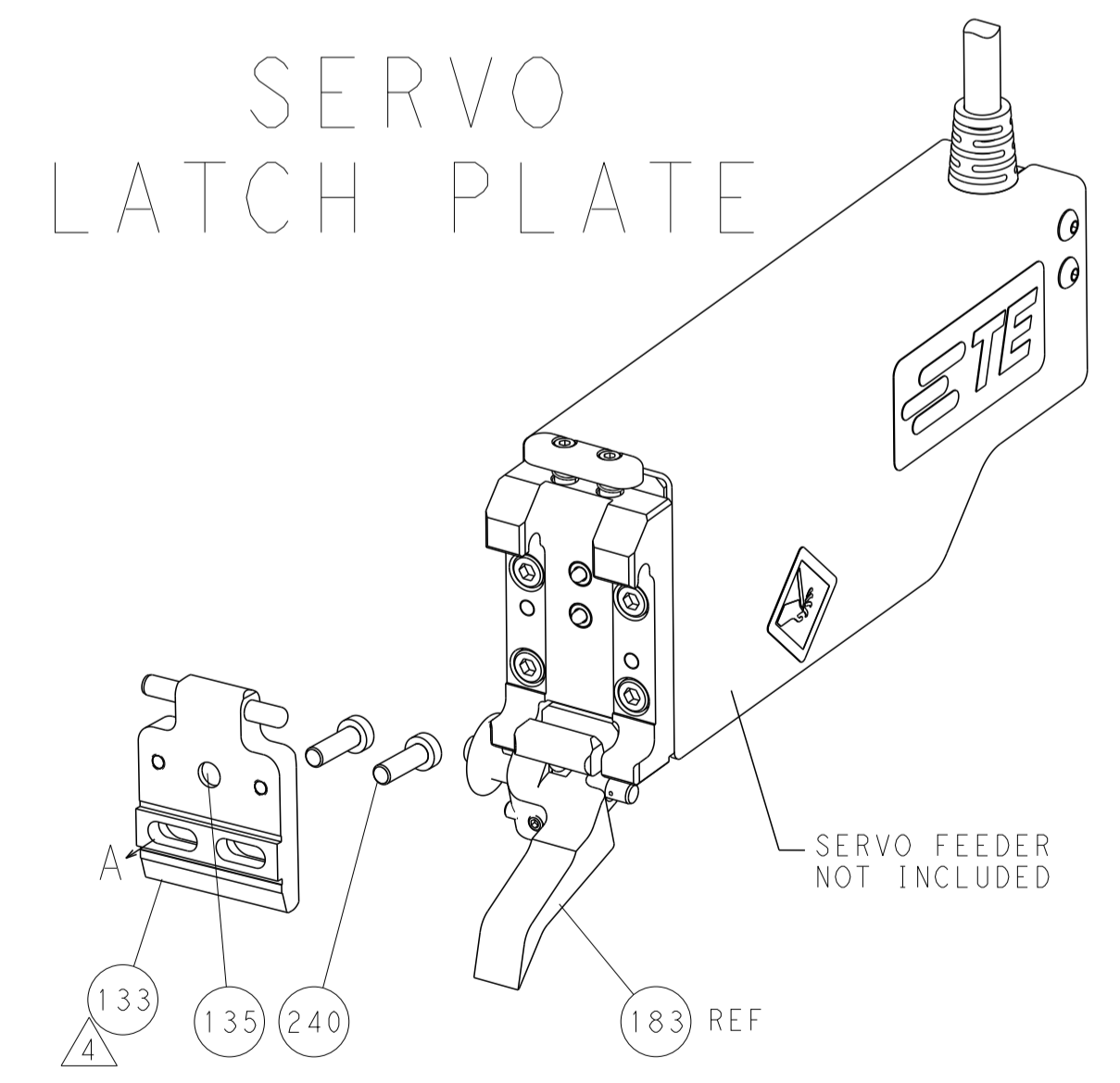
FEED TYPE
MECHANICAL



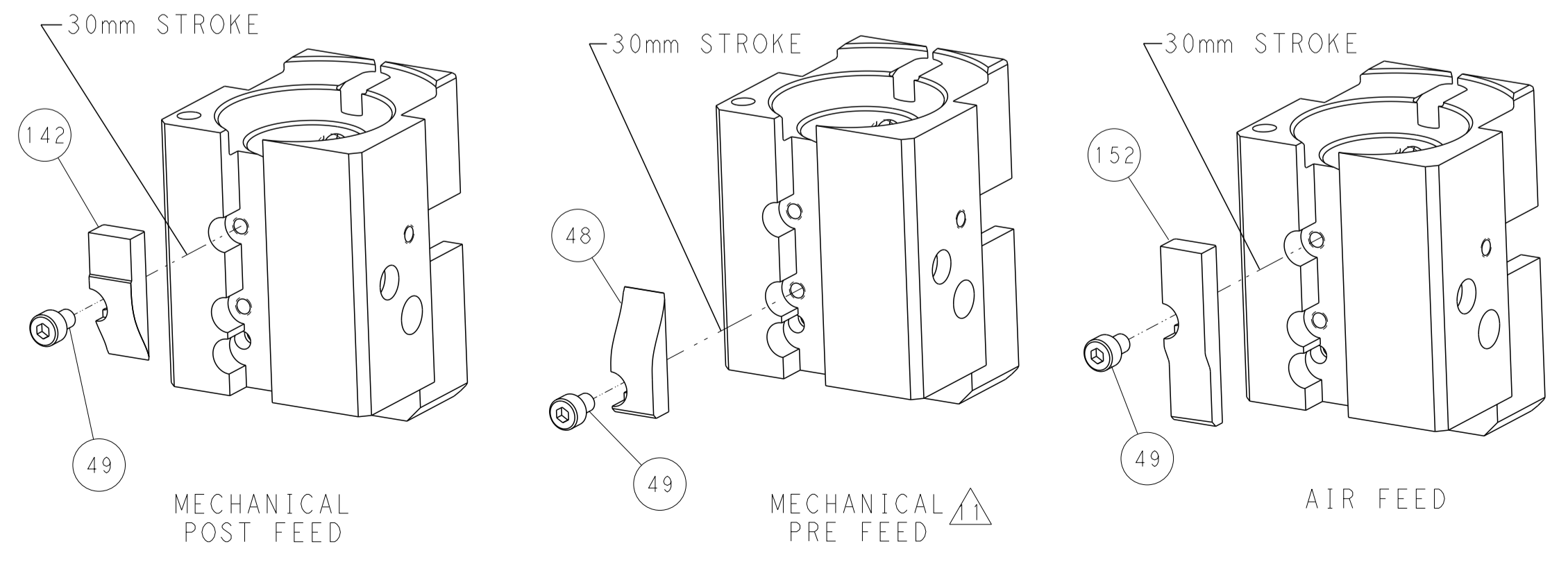
PNEUMATIC



SERVO LATCH PLATE



CAM POSITIONS



PACIFIC VERSION
 Shown on sheets 3 of 4 & 4 of 4
 (Atlantic version shown on sheets 1 of 4 & 2 of 4)

| | | | | | | | |
|-------------|--------|--|--|--|---------------------------|-----------------|--------------------|
| DIMENSIONS: | | TOLERANCES UNLESS OTHERWISE SPECIFIED: | | DWN HOFFNER 10MAY2013 | | TE Connectivity | |
| mm | 0 PLC | ± | | CHK T. ELBIN 13MAY2013 | Harrisburg, PA 17105-3608 | | |
| | 1 PLC | ± | | APVD T. ELBIN 13MAY2013 | NAME | | |
| | 2 PLC | ± | | PRODUCT SPEC | Ocean End Feed | | |
| | 3 PLC | ± | | APPLICATION SPEC | Applicator | | |
| | 4 PLC | ± | | WEIGHT | SIZE CAGE CODE DRAWING NO | | RESTRICTED TO |
| | ANGLES | ± | | | A1 00779 C=2150342 | | |
| | FINISH | | | Customer Accessible Production Drawing | | SCALE 1:1 | SHEET 4 OF 4 REV B |