

# NCV7691LBGEVB

## NCV7691 Load Board Evaluation Board User's Manual



ON Semiconductor®

<http://onsemi.com>

### Eval Board User's Manual

#### Description

The NCV7691GEVB Current Controller with Automotive LED Lamps in Sequencing Application Evaluation Board has an edge connector feature which allows for an external connection of LEDs. This board connects to the edge connector to display LEDs in addition to the LED array on the board.

Four boards with different LED footprints will fit many standard LED components. Each board has a connector for the controller board VBB and 3 strings of 4 LEDs in series. If you are only using 3 LEDs in your string, a short across the unpopulated footprint will complete the circuit.

Instructions for setting current levels and guiding the circuit to the edge connector are include in the NCV7691GEVB user manual.

#### Features

- Provides a Platform to Display Design Target LEDs
- Options for 4 Different LED Footprints

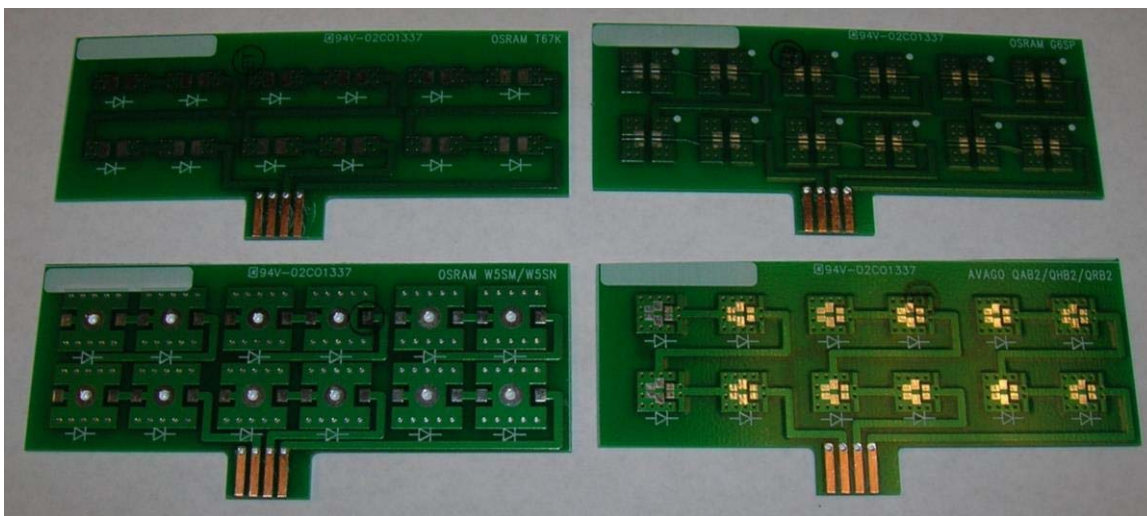


Figure 1. NCV7691 Optional External LED Load Boards

The Load boards are designed for standard LED components, but alternative components may be populated to any of these boards.

The standard LED targeted components are:

1. OSRAM T67K
2. OSRAM G6SP
3. OSRAM W5SM / W5SN
4. AVAGO QAB2 / QHB2 / QRB2

# NCV7691LBGEVB

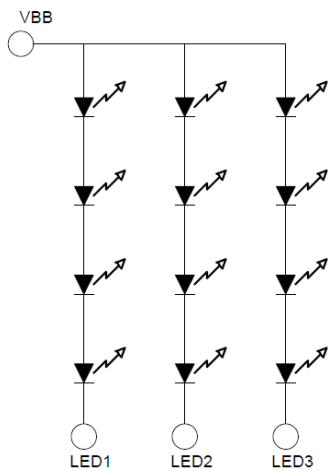


Figure 2. Load Board Schematic

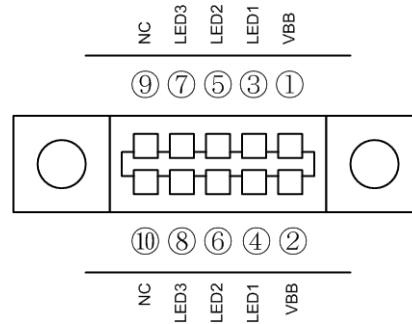


Figure 3. Edge Connector

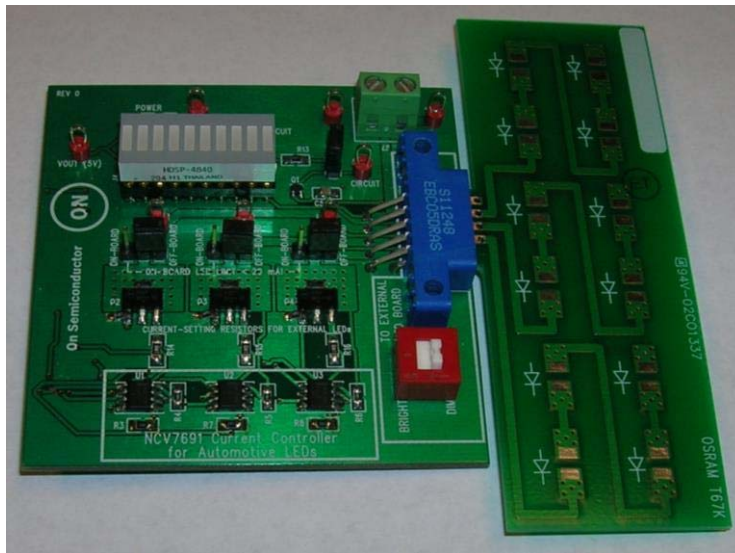



Figure 4. Load Board Interface with Controller Board

The connections in the load board provide a path between VBB and each individual string as shown in Figure 2. Figure 3 shows the load board interfaced to the controller board. The jumpers labeled for “OFF-BOARD” should be moved to their proper position (right) for use. Figure 4 shows the Edge Connector points if an additional load board

is desired. It is also simple to connect to the edge connector with clip leads for easy access to the driver points.

It is best to remove the LED array from the board when using the external LED boards to avoid high current damage to the LED array.

ON Semiconductor and  are registered trademarks of Semiconductor Components Industries, LLC (SCILLC). SCILLC owns the rights to a number of patents, trademarks, copyrights, trade secrets, and other intellectual property. A listing of SCILLC's product/patent coverage may be accessed at [www.onsemi.com/site/pdf/Patent-Marking.pdf](http://www.onsemi.com/site/pdf/Patent-Marking.pdf). SCILLC reserves the right to make changes without further notice to any products herein. SCILLC makes no warranty, representation or guarantee regarding the suitability of its products for any particular purpose, nor does SCILLC assume any liability arising out of the application or use of any product or circuit, and specifically disclaims any and all liability, including without limitation special, consequential or incidental damages. "Typical" parameters which may be provided in SCILLC data sheets and/or specifications can and do vary in different applications and actual performance may vary over time. All operating parameters, including "Typicals" must be validated for each customer application by customer's technical experts. SCILLC does not convey any license under its patent rights nor the rights of others. SCILLC products are not designed, intended, or authorized for use as components in systems intended for surgical implant into the body, or other applications intended to support or sustain life, or for any other application in which the failure of the SCILLC product could create a situation where personal injury or death may occur. Should Buyer purchase or use SCILLC products for any such unintended or unauthorized application, Buyer shall indemnify and hold SCILLC and its officers, employees, subsidiaries, affiliates, and distributors harmless against all claims, costs, damages, and expenses, and reasonable attorney fees arising out of, directly or indirectly, any claim of personal injury or death associated with such unintended or unauthorized use, even if such claim alleges that SCILLC was negligent regarding the design or manufacture of the part. SCILLC is an Equal Opportunity/Affirmative Action Employer. This literature is subject to all applicable copyright laws and is not for resale in any manner.

## PUBLICATION ORDERING INFORMATION

### LITERATURE FULFILLMENT:

Literature Distribution Center for ON Semiconductor  
P.O. Box 5163, Denver, Colorado 80217 USA  
**Phone:** 303-675-2175 or 800-344-3860 Toll Free USA/Canada  
**Fax:** 303-675-2176 or 800-344-3867 Toll Free USA/Canada  
**Email:** [orderlit@onsemi.com](mailto:orderlit@onsemi.com)

**N. American Technical Support:** 800-282-9855 Toll Free  
USA/Canada  
**Europe, Middle East and Africa Technical Support:**  
Phone: 421 33 790 2910  
**Japan Customer Focus Center**  
Phone: 81-3-5817-1050

**ON Semiconductor Website:** [www.onsemi.com](http://www.onsemi.com)

**Order Literature:** <http://www.onsemi.com/orderlit>

For additional information, please contact your local Sales Representative