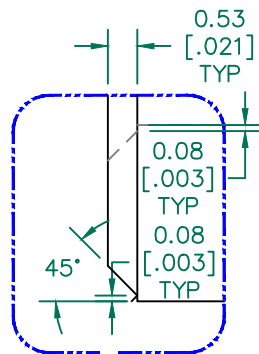


SECTION A-A  
SEE DETAIL "A"



DETAIL "A"  
CHAMFER  
SCALE=8:1

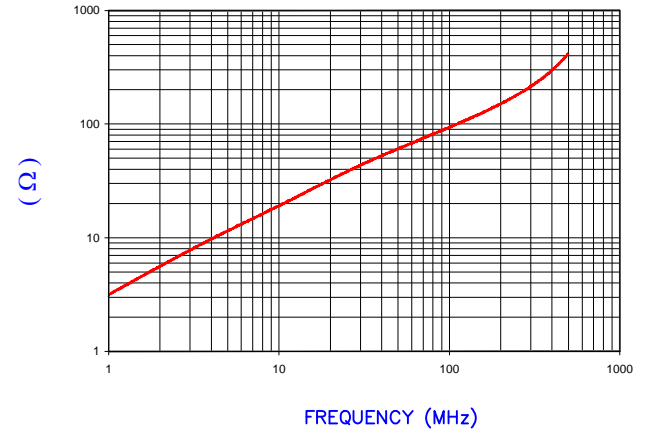
**UNCONTROLLED DOCUMENT**

NOTES: UNLESS OTHERWISE SPECIFIED

1. COSMETIC SPECIFICATION REFER TO WI-QA-038.

IMPEDANCE ( Z )			
Frequency	25 MHz	100 MHz	300 MHz
Nominal (REF)	39 Ω	91 Ω	214 Ω
Minimum	- Ω	73 Ω	- Ω

Z vs. FREQUENCY  
(REF. ONLY)

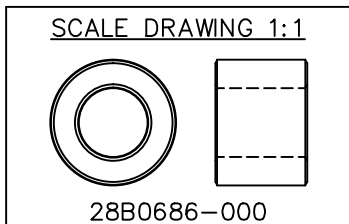


AGILENT E4991A Impedance/Material Analyzer  
HP 16092A Test Fixture REF #3328

FERRITE CORE DIMENSIONS (SPEC): mm [in]

A	17.42 [.686]	+	0.36 [.014]
B	9.53 [.375]	+	0.20 [.008]
C	6.35 [.250]	+	0.18 [.007]

WEIGHT/1000 5.20 kgs 11.47 lbs



DIMENSIONS ARE IN INCHES (mm).				This print is the property of Laird Tech. and is loaned in confidence subject to return upon request and with the understanding that no copies shall be made without the written consent of Laird Tech. All rights to design or invention are reserved.		<b>Laird</b>	
J	UPDATE THE LOGO	05/13/15	QIU	PROJECT/PART NUMBER:		REV	DRAWN BY:
H	CHG B DIM FROM 9.52 UPDATE COMPANY LOGO	05/29/08	JRK	28B0686-000		J	LNK
G	UPDATE Z SPECS AND COMPANY LOGO	06/11/07	JRK	DATE: 9/08/92		SCALE: 2 : 1	MATERIAL:
F	UPDATE MIN Z SPECS @100Mhz, ADD REF#	06/17/04	JRK	CAD # 28B0686-000-J		TOOL # B0686	Ferrite
E	UPDATE PRINT & Z SPECS ADD CURVE REM COATING SPECS CHG P/N FROM -00*	05/21/03	JRK				
REV	DESCRIPTION	DATE	INT				