

DWG NO C-6-1579008-3	PASSMASS	ABMASS

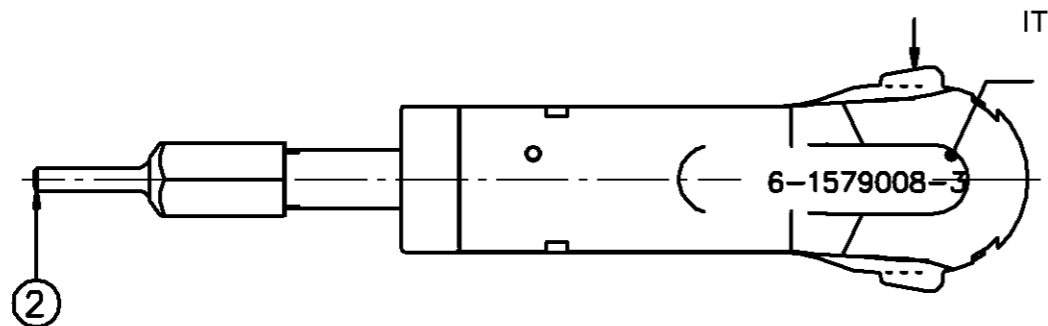
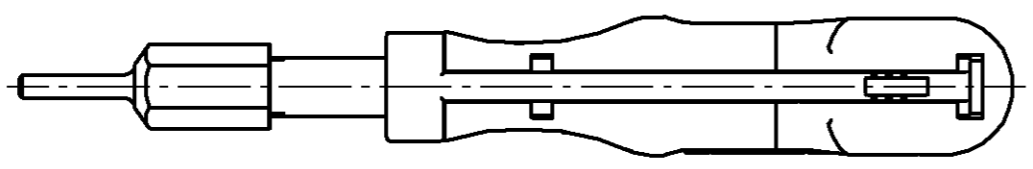
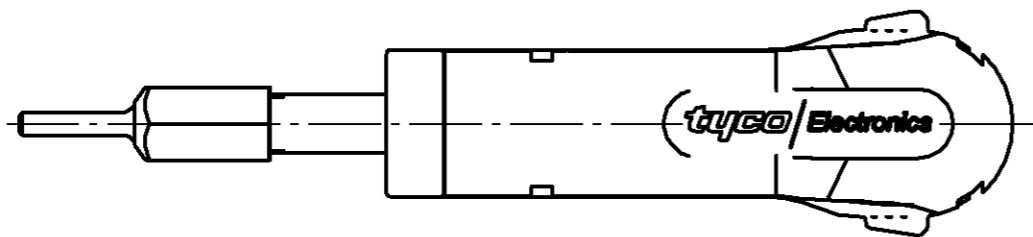
THIS DRAWING IS A CONTROLLED DOCUMENT FOR AMP INCORPORATED. IT IS SUBJECT TO CHANGE AND THE CONTROLLING ENGINEERING ORGANIZATION SHOULD BE CONTACTED FOR THE LATEST REVISION.

DIESES ZEICHNUNGSDOKUMENT WIRD DURCH AMP INCORPORATED KONTROLLIERT. ÄNDERUNGEN, DIE DEN TECHNISCHEN FORTSCHRITT DIENEN, SIND VORBEHALTEN. DEN JEWEILS LETZTLIEGENDEN ANMERKUNGSSTAND ERFAHREN SIE AUF ANFRAGE.

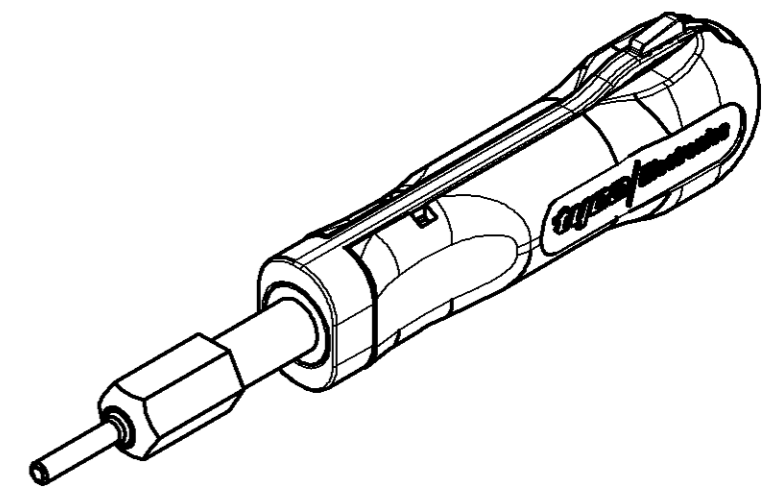
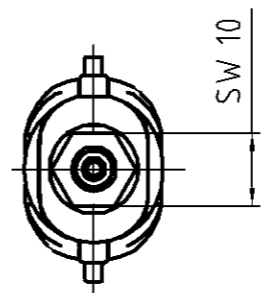
THIS INFORMATION IS CONFIDENTIAL AND IS DISCLOSED TO YOU ON CONDITION THAT NO FURTHER DISCLOSURE IS MADE BY YOU TO OTHER THAN AMP PERSONNEL WITHOUT WRITTEN AUTHORIZATION FROM AMP INCORPORATED. D - 64625 BENSHEIM

PROJECT NO. : _____ USED ON _____

Pos.#	Titel	PN	Material	Surface	Heat Treat.	Qty
2	Dism. sleeve	6-1579008-5	Springsteel	Nickel-pl.		1



ITEM NUMBER



FOR CONTACTS / HOUSINGS:

HDR Contact: 203816, 166046, 203816, 203874, 166047, 203874

FREIASSSTOLERANZEN NACH DIN 7168 (WERTE IN MM)
1) ABWEICHEND VON DIN 7168 2) LÄNGE DES KÜRZEREN SCHENKELS

NENNMASS- BEREICH 1)	UBER	0.5	3	6	30	120	400
BIS		3	6	30	120	400	1000
ABMASSE	LÄNGEN- MASSE	FEIN MITTEL	±0.05 ±0.1	±0.05 ±0.1	±0.1 ±0.2	±0.15 ±0.3	±0.2 ±0.8
	RADIEN U. FASEN		±0.2	±0.5	±1	±2	±4
	WINKELABMASSE 1) 2)		±1°	±1°	±30'	±20'	±10' ±5'

GENERAL TOLERANCES ACC. TO DIN 7168 (VALUES IN MM)
1) DEVIATING FROM DIN 7168 2) LENGTH OF SHORT ANGLE SIDE

LOC	AI	DIST	
TEIL IM BEREICH X... MIT PN/STRICH-NR. (-1 WIE GEZ.), REVISION-STAND UND LIEFERANTENSYMBOL GEMEINZEICHNET			
PART TO BE MARKED WITH PN, DASH NO. (-1 AS SHOWN), REV. STATUS AND VENDORS MARK IN AREA X...			
OBERFLÄCHENVERGLEICHSTABELLE			
DIN 3141 R3	BOHR- DIENE ANGABE		
Ra in µm DIN ISO 1302	6.3	1.6	0.4
	12.5		
ALLE UNBEHASSTE KANTEN 0.2x45° ENTGRÄTET REMOVE BURRS. BREAK SHARP EDGES 0.2x45°			

REVISION RECORD	DATE	DWN	APVD
A	00.00.2000		
P	LTR		

FINISH	DWN	16.03.2007
DIMENSIONS: mm	CHK	19.03.2007
TOLERANCES UNLESS OTHERWISE SPECIFIED n ISO 8015 n ISO 2768 - mH - E n DIN 16901 - 140	APVD	19.03.2007
0 PLC ± 1 PLC ± 2 PLC ± 3 PLC ± 4 PLC ±	NAME EXTRACTION TOOL Entriegelungswerkzeug	
ANGLES	SCALE	1:1
SURFACE TEXTURE	SIZE	A3

DWN	16.03.2007	MATERIAL	59CrV4	HEAT TREAT	
h. fink	19.03.2007	G. Stegmayer	Gewicht / Weight 0,000kg		
APVD	19.03.2007	G. Stegmayer	tyco Electronics AMP GmbH D - 64625 Bensheim		
SCALE	1:1	DRAWING NO	C-6-1579008-3	SHEET	1 OF 1
REV	A				