

THIS DRAWING IS UNPUBLISHED. RELEASED FOR PUBLICATION 2011
 BY TYCO ELECTRONICS CORPORATION, ALL RIGHTS RESERVED.

ATLANTIC VERSION TERMINATOR INTERFACE ADAPTER	PART NUMBER	REVISION	DESCRIPTION	FEED TYPE	APPLICATOR STYLE CONVERSION CHART						
					CONVERT TO	PART NUMBERS REQUIRED					
						PNEUMATIC FEED	2119950-1	1338683-1	5-18022-5	2119641-1	2119799-1
	2151498-1	A	FINE CRIMP HEIGHT ADJUST	MECHANICAL	SERVO LATCH PLATE	2119951-1	1901694-1	8-2151498-5	1901094-3	1976043-1	2168400-6 (QUANTITY 2)
					SMART APPLICATOR	2161326-1	-	8-2151498-4	-	-	-
					MECHANICAL FEED	2119949-1	1338683-1	5-18022-5	2119653-1	-	-
2151498-2	A	FINE CRIMP HEIGHT ADJUST	PNEUMATIC	SERVO LATCH PLATE	2119951-1	1901694-1	8-2151498-5	1901094-3	1976043-1	2168400-6 (QUANTITY 2)	
				SMART APPLICATOR	2161326-1	-	8-2151498-4	-	-	-	
				MECHANICAL FEED	2119949-1	1338683-1	5-18022-5	2119653-1	-	-	
2151498-5	A	FINE CRIMP HEIGHT ADJUST	SERVO LATCH PLATE	PNEUMATIC FEED	2119950-1	1338683-1	5-18022-5	2119641-1	2119799-1	2063440-1	
				-	-	-	-	-	-	-	
				-	-	-	-	-	-	-	
2151498-6	A	NON-CRIMP HEIGHT ADJUST	SERVO LATCH PLATE	-	-	-	-	-	-	-	
				-	-	-	-	-	-	-	
				-	-	-	-	-	-	-	
2151498-7	A	FINE CRIMP HEIGHT ADJUST	NONE	-	-	-	-	-	-	-	
				-	-	-	-	-	-	-	
7-2151498-7	A	CRIMP TOOLING KIT	-	-	-	-	-	-	-	-	

APPLICATOR DATA		
CRIMP WIRE	SIZE	TYPE
WIRE	5.33mm [0.210 IN]	F
INSUL	-	-

APPLICATOR INSTRUCTIONS 408-10389

TERMINAL DATA: TE TERMINAL		TE CRIMP SPECIFICATION	
TERMINAL NAME: TERMINAL, RING			
WIRE STRIP LENGTH		INSULATION DIAMETER RANGE	
6.35 mm [0.250 IN]			
TERMINAL APPLICATION SPECIFICATION	114-2084		
TERMINALS APPLIED			
TE TERMINAL	TE TERMINAL	TE TERMINAL	TE TERMINAL
41356	41341		

WIRE SIZE	CRIMP HEIGHT INCH [mm]	CRIMP HEIGHT REFERENCE SETTING
10 AWG	3.38 +/- 0.05 [0.133 +/- 0.002]	8.5
12 AWG	3.07 +/- 0.05 [0.121 +/- 0.002]	12.4

- 1 RECOMMENDED SPARE PARTS
- 2 GREASE BEARING SURFACES LIGHTLY
- 3. LUBRICATE DAILY PER THE APPLICATOR INSTRUCTION SHEET SUPPLIED WITH THE APPLICATOR.
- 4 APPLICATOR SPECIFIC DATA TO BE ENTERED INTO BLANK MEMORY CHIP AT ASSEMBLY. SEE BELOW FOR PART NUMBER:
 MECHANICAL FEED WITH "SMART APPLICATOR" CONVERSION: 8-2151498-4
 PNEUMATIC FEED WITH "SMART APPLICATOR" CONVERSION: 8-2151498-5
 SERVO FEED WITH "FINE CRIMP HEIGHT ADJUST": 8-2151498-5
 SERVO FEED WITH "NON-CRIMP HEIGHT ADJUST": 8-2151498-6
- 5. ADJUSTMENT OF THE STRIPPER MAY BE REQUIRED WHEN MOVING THE APPLICATOR BETWEEN BENCH AND LEADMAKER APPLICATIONS.
- 6 APPLY PART NUMBER 1-23419-5 LOCTITE TO THREADS OF ITEM 50.
- 7 GREASE THREADS, GROOVE AND O-RING ON ITEMS 35 & 252.
- 8 MAGNET, ITEM 166 MUST BE ORIENTED CORRECTLY IN ORDER TO PROPERLY ACTUATE THE COUNTER.
- 9 CRIMP HEIGHT REFERENCE SETTING WAS THE SETTING USED WHEN THE APPLICATOR WAS QUALIFIED AT THE FACTORY. ADJUSTMENT MAY BE NECESSARY WHEN RUNNING APPLICATOR IN THE FIELD.
- 10 SPARE FEED CAM STORAGE LOCATION REFER TO INSTRUCTION SHEET FOR ADDITIONAL INFORMATION.
- 11 WHEN ASSEMBLING -6 NON-CRIMP HEIGHT ADJUST APPLICATOR USE SHIM PACK 2119957-2 TO ALIGN APPLICATOR'S MAXIMUM WIRE CRIMP HEIGHT AT NORMAL TERMINATOR SHUT HEIGHT
- 12 CUT SCREWS TO LENGTH AT ASSEMBLY

***WARNING**
 ON INSTALLATION, SET WIRE DISC, ITEM 40 TO LARGEST WIRE SIZE SETTING. USE OF SETTINGS BELOW MINIMUM REQUIRED CRIMP HEIGHT SETTING WILL CAUSE DAMAGE TO CRIMP TOOLING.

ATLANTIC VERSION
 Shown on sheets 1 of 4 & 2 of 4
 (Pacific version shown on sheets 3 of 4 & 4 of 4)

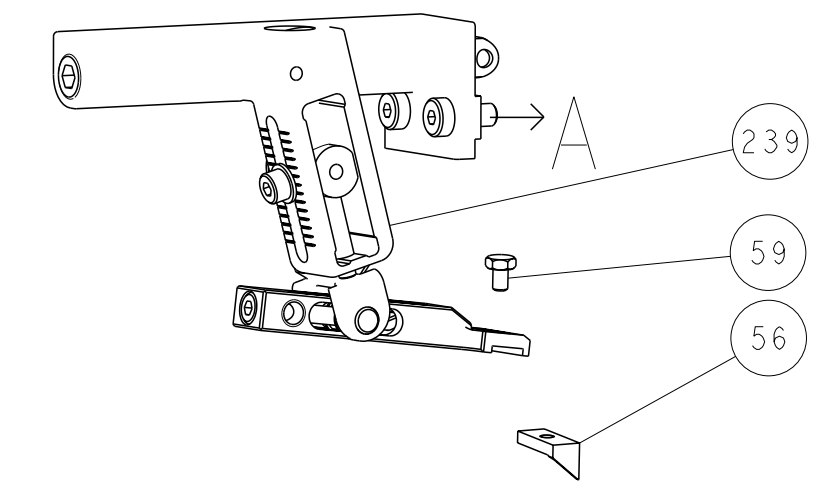
SET UP GAUGE	LOC	DIST	REVISIONS				
2119599-1	A	66	P LTR	DESCRIPTION	DATE	DWN	APVD
			A	RELEASED	30APR2012	BW	GB

-	-	1	-	-	-	2119957-2	APPLICATOR SHIM PACK	260
-	1	-	1	1	1	8-21084-0	O-RING, .676 ID, .070 DIA. MAT.	252
-	-	-	-	1	-	2119640-1	PUSH ROD, AIR FEED	250
-	-	-	-	1	-	2079988-1	BUSHING, LCH5-12, MISUMI	249
-	-	-	-	1	-	2119641-1	FEED CAM, AIR FEED	248
-	1	-	1	1	1	2119798-1	DETENT PIN	247
-	1	-	1	1	1	1-22279-3	SPRING, COMPRESSION	246
-	-	1	-	-	-	2119758-1	RAM, AMP STYLE, SIDE FEED, NON-ADJ.	245
-	-	2	2	-	-	2168400-6	SHCS, LOW HEAD, RoHS, M5 X 16	240
-	-	-	-	-	1	2119580-1	MECHANICAL FEED ASSEMBLY	239
-	-	-	-	1	-	2063440-1	AIR FEED MODULE	238
1	-	1	1	1	1	1673019-1	BLADE, SLUG	232
-	-	1	1	-	-	2119740-2	TAG IDENTIFICATION	213
-	-	1	1	-	-	1901094-3	SPACER, FEEDER	198
-	-	1	1	-	-	1976043-1	PIN, BALL LOCK, THREADED	180
-	1	1	1	1	1	993111-1	PIN, SLOTTED SPRING 3.0 X 20.0	177
-	-	-	-	2	-	21045-3	RING, RETAIN, EXTERN, 3/16 CRESCENT	172
-	1	1	1	1	1	994969-1	MAGNET, RARE EARTH HIGH ENERGY	166
-	REF	REF	REF	REF	REF	994970-2	COUNTER, MAGNETIC	164
-	-	-	-	1	-	240638-1	SPRING, FEED FINGER	163
-	-	-	-	1	-	3-23627-7	PIN, RETAIN, GRVD, 3/16 X .854	137
-	-	-	-	1	-	2119799-1	HOLDER, FEED FINGER, AF	136
4	-	REF	REF	-	-	SEE NOTE 4	MEMORY CHIP, PROGRAMMED	135
-	-	1	1	-	-	1633743-1	SERVO FEED LATCH ASM	133
-	-	1	1	-	-	1901694-1	FEED FINGER ASSEMBLY, SF	118
-	1	1	1	1	1	455888-5	SPACER, CRIMPER	82
-	1	1	1	1	1	2119956-1	DOCUMENTATION PACKAGE	71
-	1	-	-	1	1	2119740-1	TAG IDENTIFICATION	67
-	2	2	2	2	2	2168078-1	SCREW, DRIVE, RH, RoHS	66
-	1	-	1	1	1	2119793-1	LIMITER, ADJUSTMENT BOLT	63
-	3	-	3	3	3	992763-5	SCR, SET, SOC, CONE POINT, M3 x 4.0	62
-	1	1	1	1	1	2079383-4	SCR, BHSC, RoHS (M4 X 8)	60
-	-	-	-	1	1	5-18022-5	SCR, HEX HD CAP, M4 X 6.0	59
-	-	-	-	1	1	1338683-1	FEED PAWL	56
-	2	2	2	2	2	1-22284-0	SPRING, COMPRESSION	52
-	1	1	1	1	1	1-22281-8	SPRING, COMPRESSION	51
-	1	1	1	1	1	2168083-6	SCR, SKT HD CAP, RoHS, M5 X 6.5	50
-	-	-	-	1	2	18023-9	SCR, SKT HD CAP M4 X 6.0	49
-	-	-	-	-	1	2119652-1	FEED CAM, PRE FEED	48
-	-	-	-	-	1	2119653-1	FEED CAM, POST FEED	47
1	1	1	1	1	1	2119656-9	APPLICATOR BASIC ASSEMBLY, SF	46
1	2	2	2	2	2	2168083-9	SCR, SKT HD CAP, RoHS, M4 X 20	45
-	1	-	1	1	1	2119370-1	RAM, AMP STYLE, SIDE FEED	44
-	1	1	1	1	1	1-18023-1	SCR, SKT HD CAP M4 X 10.0	43
-	1	1	1	1	1	980371-4	SCR, SKT HD SHLDR 5.0 DIA X 6.0	42
-	1	1	1	1	1	2079383-7	SCR, BHSC, RoHS (M8 X 25)	41
-	1	-	1	1	1	2119645-1	DISC, NUMBERED FA WIRE ADJUSTMENT	40
-	1	-	1	1	1	2119957-1	APPLICATOR SHIM PACK	39
-	1	1	1	1	1	2119644-2	RAM WASHER, PRECISION	38
-	1	1	1	1	1	2119085-1	FA HEAD, ATLANTIC STYLE	37
-	2	2	2	2	2	2168083-2	SCR, SKT HD CAP, RoHS, M4 X 8.0	36
-	1	-	1	1	1	2119092-1	BOLT, ADJUSTMENT	35
-	2	2	2	2	2	18023-5	SCR, SKT HD CAP M3 X 12.0	34
-	2	2	2	2	2	2168083-1	SCR, SKT HD CAP, RoHS, M3 X 8.0	33
-	1	1	1	1	1	2161328-1	HEX HEAD, FLANGED, M5 x 8mm LONG	32
-	2	2	2	2	2	2-18032-5	SCR, SET, FLT POINT M5 X 20.0	31
-	1	1	1	1	1	1901086-3	PLATE, STRIP GUIDE	29
-	1	1	1	1	1	356835-1	LEVER, DRAG RELEASE	27
1	-	1	1	1	1	2119924-2	SHEAR, LOWER	22
-	1	1	1	1	1	2168083-2	SCR, SKT HD CAP, RoHS, M4 X 8.0	21
-	1	1	1	1	1	1-18028-2	WASHER, FLAT, REG M4	20
-	1	1	1	1	1	2119533-1	STRIPPER, SIDE FEED	19
-	1	1	1	1	1	1-2119928-6	FENCE	12
-	1	1	1	1	1	2119830-2	HOLDER, SLUG BLADE	11
1	1	1	1	1	1	2119923-1	ANVIL, SPECIAL	8
-	1	1	1	1	1	3-690754-6	DRAG, SPECIAL	7
-	1	1	1	1	1	1-679651-9	FRONT STRIP GUIDE	6
1	1	1	1	1	1	9-568176-6	CRIMPER, WIRE	1
-77	-7	-6	-5	-2	-1	PART NO	DESCRIPTION	ITEM NO

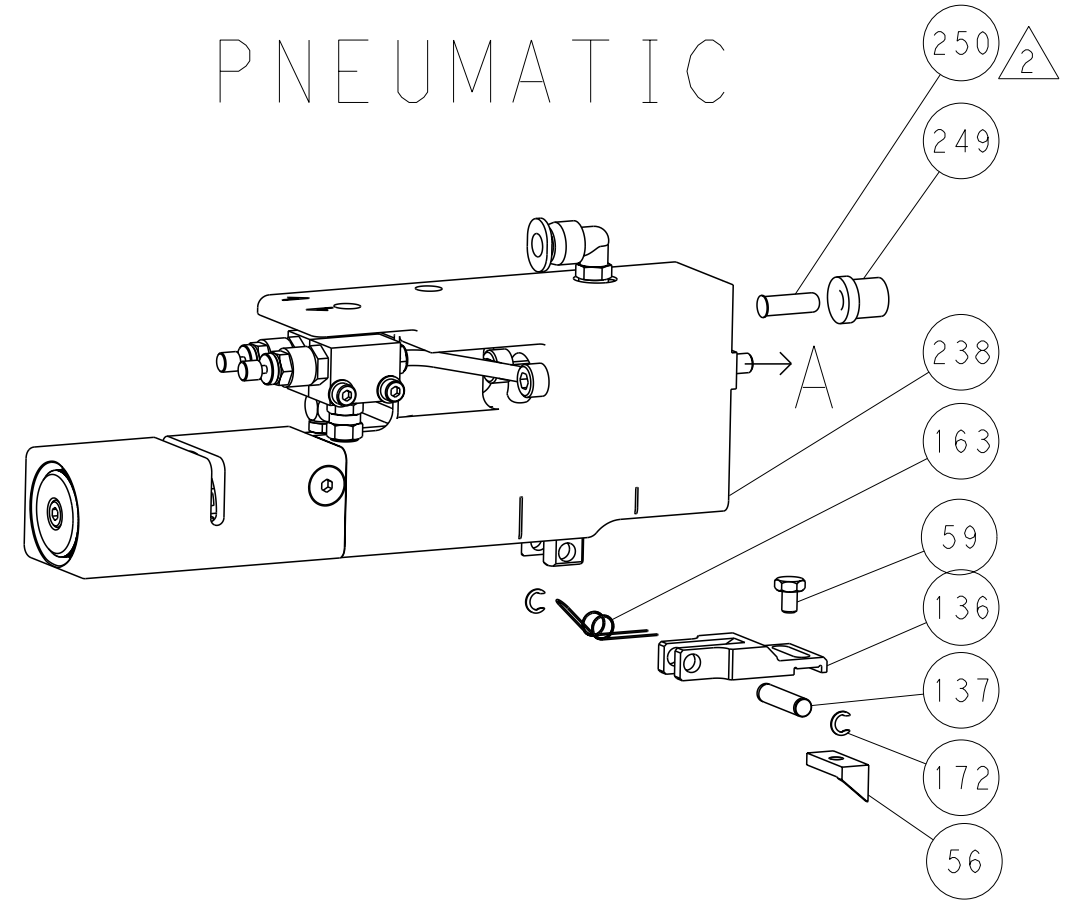
DIMENSIONS: mm 		TOLERANCES UNLESS OTHERWISE SPECIFIED: 9 PLC ±.5 1 PLC ±0.13 5 PLC ±0.013 4 PLC ±0.001 ANGLES ±.001 FINISH		DWN TO WEAVER 14SEP2011 CHK K STAKEM 14SEP2011 APVD T ELBIN 14SEP2011	NAME: Ocean Side Feed Applicator SIZE: A1 CAGE CODE: 00779 DRAWING NO: C-2151498 SCALE: 1:2 SHEET: 1 OF 4 REV: A
--------------------	--	--	--	---	--

LOC	DIST	REV	DESCRIPTION	DATE	DWN	APVD
A	66		SEE SHEET 1			

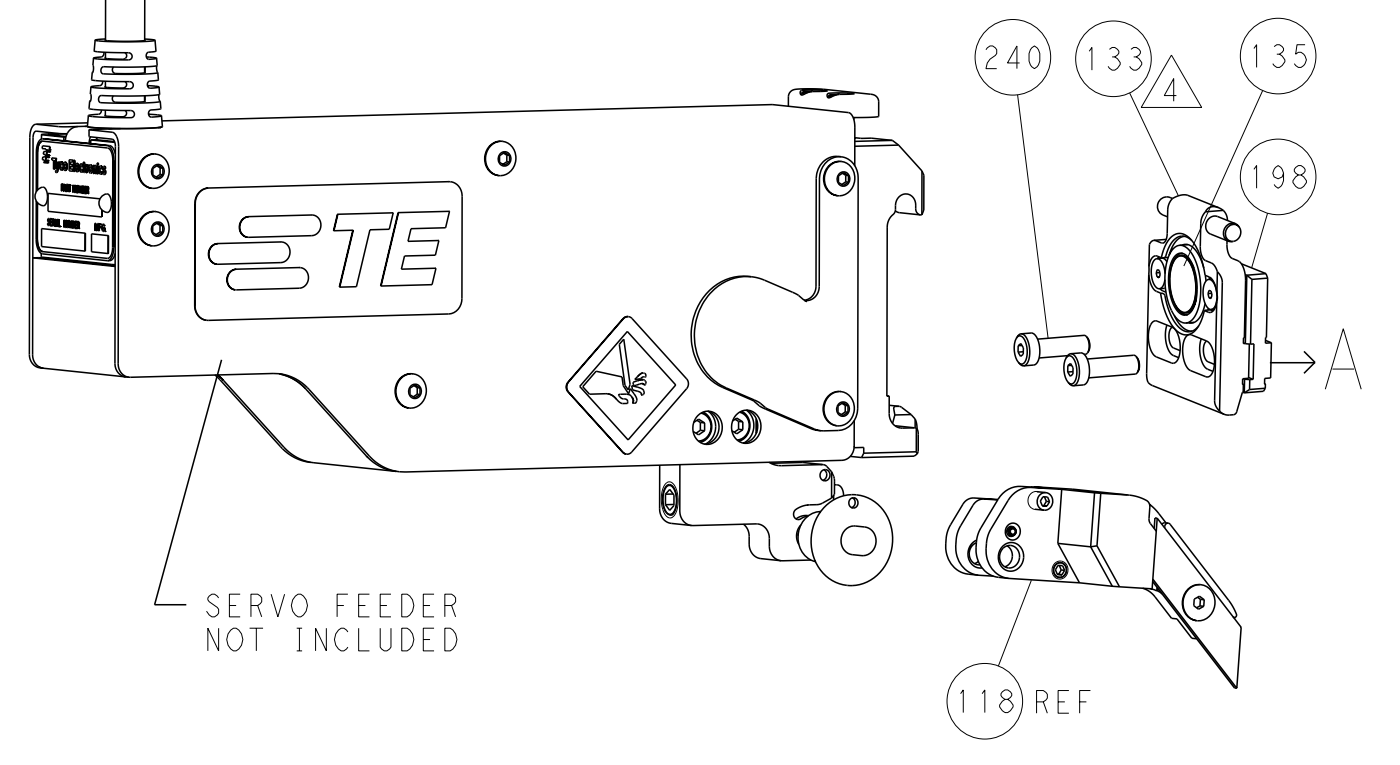
FEED TYPE MECHANICAL



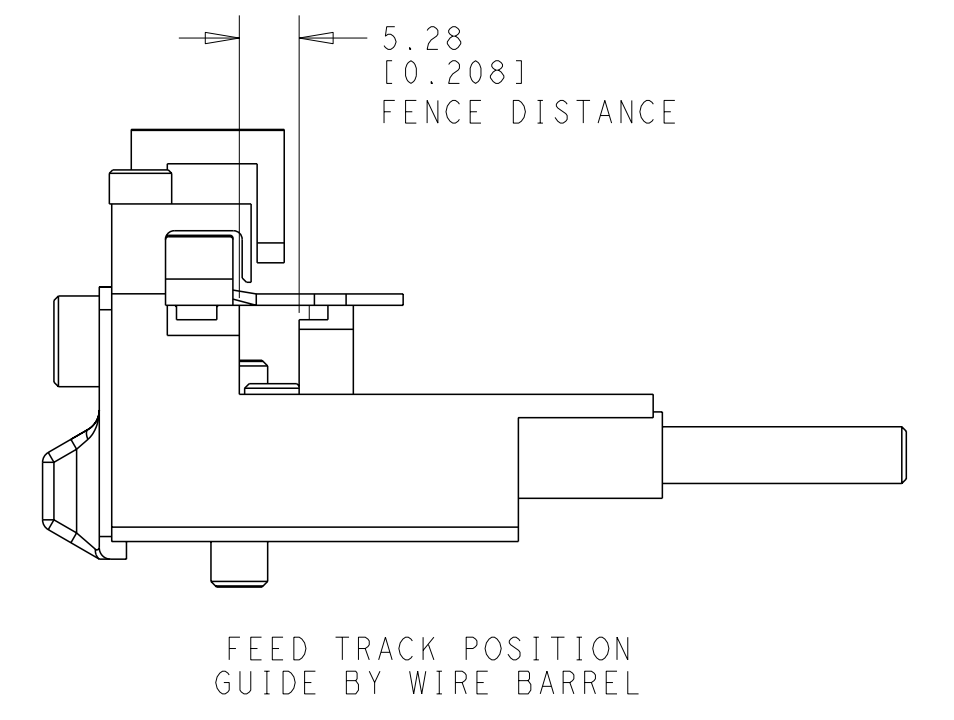
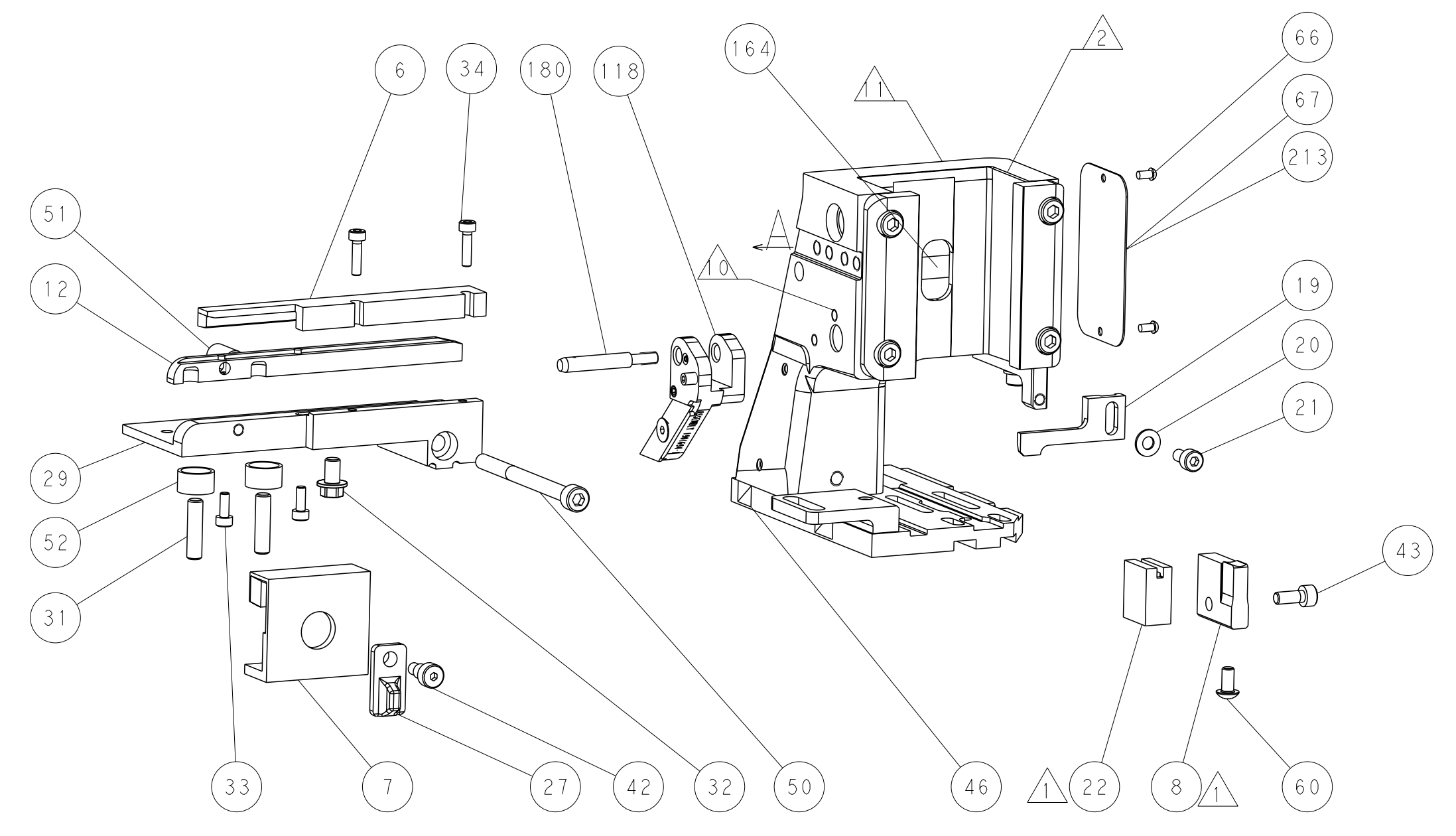
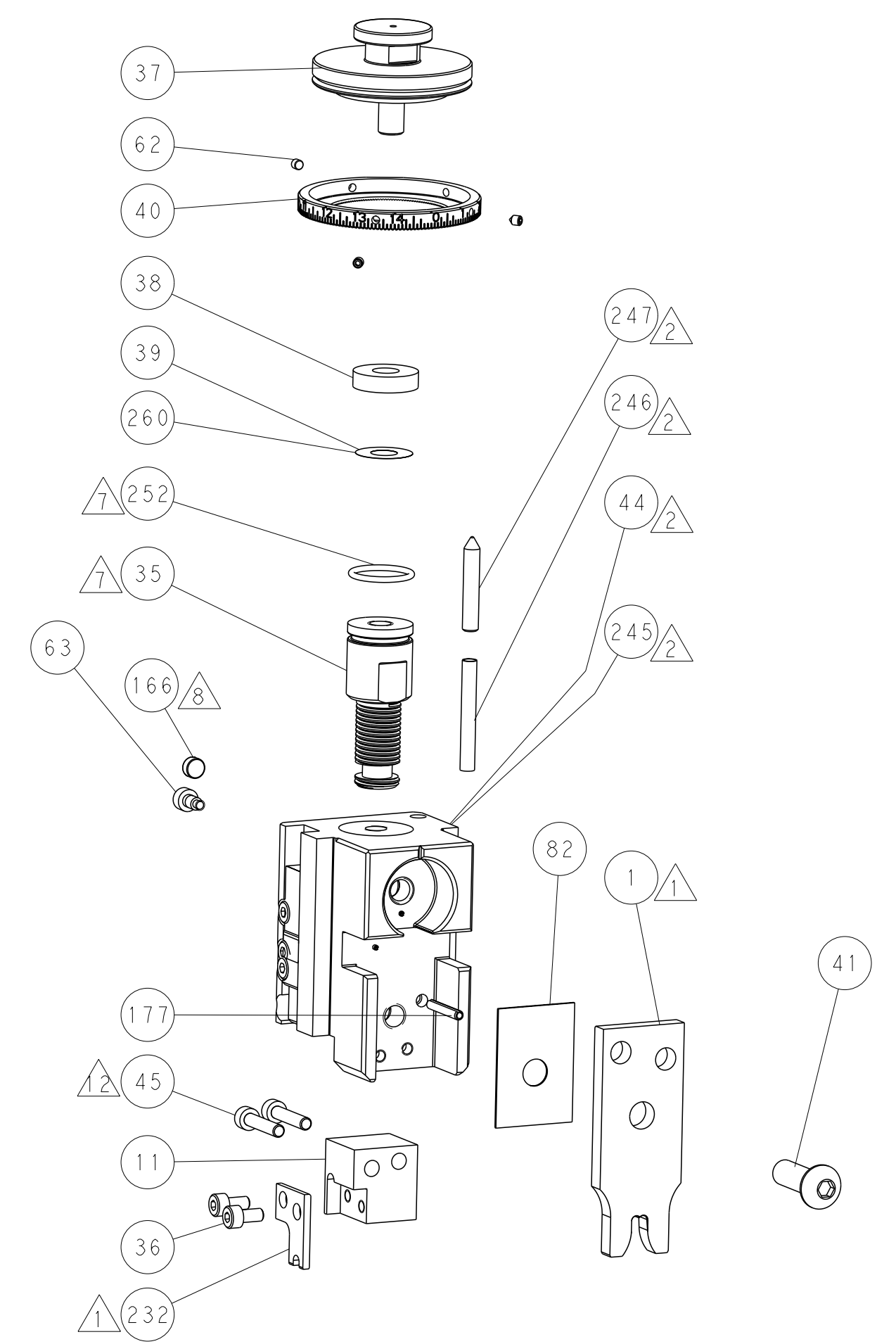
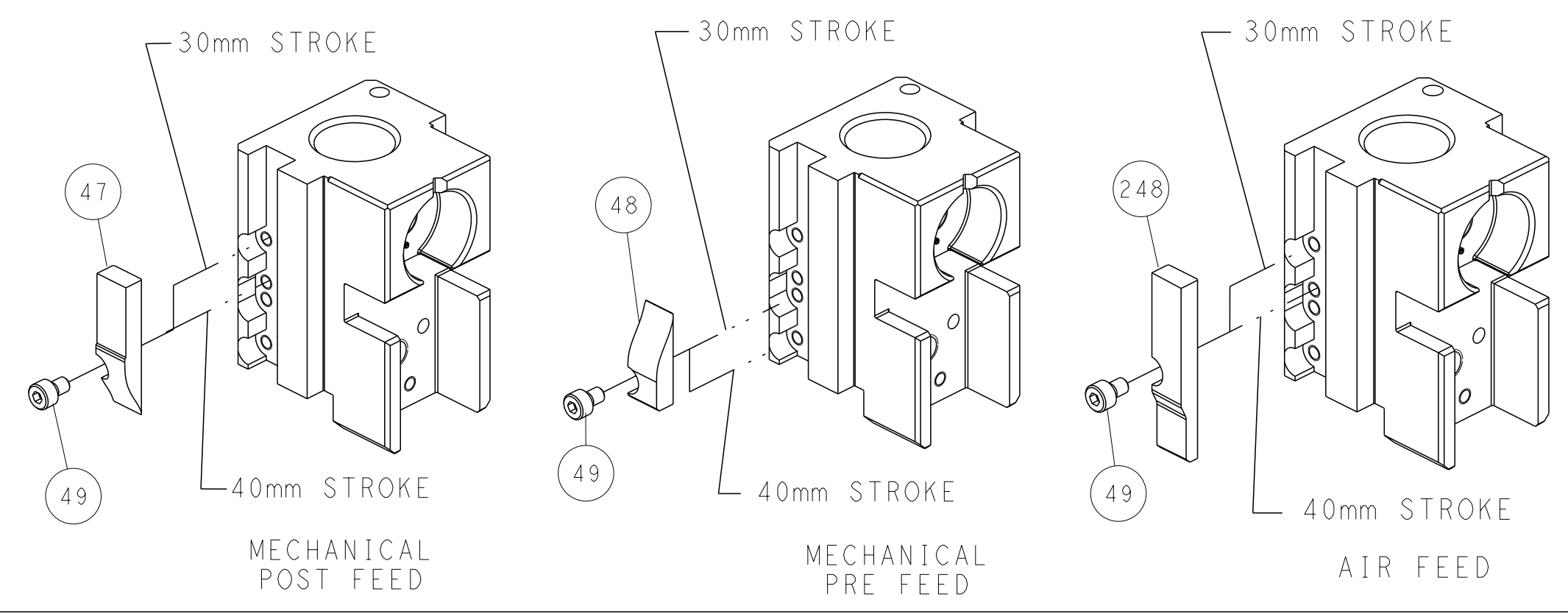
PNEUMATIC



SERVO LATCH PLATE



CAM POSITIONS



ATLANTIC VERSION
 Shown on sheets 1 of 4 & 2 of 4
 (Pacific version shown on sheets 3 of 4 & 4 of 4)

<small>THIS DRAWING IS UNPUBLISHED. RELEASED FOR PUBLICATION 2011 BY TYCO ELECTRONICS CORPORATION. ALL RIGHTS RESERVED.</small>		DWN: B. WEAVER 14SEP2011 CHK: K. STAKEM 14SEP2011 APVD: T. ELBIN 14SEP2011	NAME: Ocean Side Feed Applicator SIZE: A11 CAGE CODE: 00779 DRAWING NO: C-2151498	TE Connectivity Harrisburg, PA 17105-3608
DIMENSIONS: mm TOLERANCES UNLESS OTHERWISE SPECIFIED: 9 PLC ±.5 1 PLC ±0.5 2 PLC ±0.13 3 PLC ±0.13 4 PLC ±0.001 ANGLES ±.0001 FINISH: -	WEIGHT: - MATERIAL: - CUSTOMER ACCESSIBLE PRODUCTION DRAWING: -	SCALE: 1:2 SHEET: 2 OF 4 REV: A	RESTRICTED TO: -	

DIMENSIONING AND TOLERANCING PER ASME Y14.5M-2009

A

PACIFIC VERSION TERMINATOR INTERFACE ADAPTER	PART NUMBER	REVISION	DESCRIPTION	FEED TYPE	APPLICATOR STYLE CONVERSION CHART						
					CONVERT TO	PART NUMBERS REQUIRED					
	2-2151498-1	A	FINE CRIMP HEIGHT ADJUST	MECHANICAL	PNEUMATIC FEED	2119950-1	1338683-1	5-18022-5	2119641-2	2119799-1	2063440-1
					SERVO LATCH PLATE	2119951-1	1901694-1	8-2151498-5	1901094-3	1976043-1	2168400-6 (QUANTITY 2)
					SMART APPLICATOR	2161326-1	-	8-2151498-4	-	-	-
	2-2151498-2	A	FINE CRIMP HEIGHT ADJUST	PNEUMATIC	MECHANICAL FEED	2119949-1	1338683-1	5-18022-5	2119653-2	-	-
					SERVO LATCH PLATE	2119951-1	1901694-1	8-2151498-5	1901094-3	1976043-1	2168400-6 (QUANTITY 2)
					SMART APPLICATOR	2161326-1	-	8-2151498-4	-	-	-
	2-2151498-5	A	FINE CRIMP HEIGHT ADJUST	SERVO LATCH PLATE	MECHANICAL FEED	2119949-1	1338683-1	5-18022-5	2119653-2	-	-
					PNEUMATIC FEED	2119950-1	1338683-1	5-18022-5	2119641-2	2119799-1	2063440-1
	2-2151498-7	A	FINE CRIMP HEIGHT ADJUST	NONE	-	-	-	-	-	-	-
	7-2151498-7	A	CRIMP TOOLING KIT	-	-	-	-	-	-	-	-

APPLICATOR DATA		
CRIMP WIRE	SIZE	TYPE
INSUL	5.33mm (.210 IN)	F
APPLICATOR INSTRUCTIONS 408-10389		

TERMINAL DATA: TE TERMINAL		TE CRIMP SPECIFICATION	
TERMINAL NAME: TERMINAL, RING			
WIRE STRIP LENGTH		INSULATION DIAMETER RANGE	
6.35 mm (.250 IN)		-	
TERMINAL APPLICATION SPECIFICATION	114-2084	-	-
TERMINALS APPLIED			
TE TERMINAL	TE TERMINAL	TE TERMINAL	TE TERMINAL
41356	41341		

WIRE SIZE	CRIMP HEIGHT INCH [mm]	CRIMP HEIGHT REFERENCE SETTING
10 AWG	3.38 +/- 0.05 [0.133 +/- 0.002]	8.5
12 AWG	3.07 +/- 0.05 [0.121 +/- 0.002]	12.4

- RECOMMENDED SPARE PARTS
- GREASE BEARING SURFACES LIGHTLY
- 3. LUBRICATE DAILY PER THE APPLICATOR INSTRUCTION SHEET SUPPLIED WITH THE APPLICATOR.
- APPLICATOR SPECIFIC DATA TO BE ENTERED INTO BLANK MEMORY CHIP AT ASSEMBLY. SEE BELOW FOR PART NUMBER:
 MECHANICAL FEED WITH "SMART APPLICATOR" CONVERSION: 8-2151498-4
 PNEUMATIC FEED WITH "SMART APPLICATOR" CONVERSION: 8-2151498-4
 SERVO FEED WITH "FINE CRIMP HEIGHT ADJUST": 8-2151498-5
 SERVO FEED WITH "NON-CRIMP HEIGHT ADJUST": 8-2151498-6
- 5. ADJUSTMENT OF THE STRIPPER MAY BE REQUIRED WHEN MOVING THE APPLICATOR BETWEEN BENCH AND LEADMAKER APPLICATIONS.
- APPLY PART NUMBER 1-23419-5 LOCTITE TO THREADS OF ITEM 50.
- GREASE THREADS, GROOVE AND O-RING ON ITEMS 139 & 152.
- MAGNET MUST BE ORIENTED CORRECTLY IN ORDER TO PROPERLY ACTUATE THE COUNTER.
- CRIMP HEIGHT REFERENCE SETTING WAS THE SETTING USED WHEN THE APPLICATOR WAS QUALIFIED AT THE FACTORY. ADJUSTMENT MAY BE NECESSARY WHEN RUNNING APPLICATOR IN THE FIELD.
- SPARE FEED CAM STORAGE LOCATION REFER TO INSTRUCTION SHEET FOR ADDITIONAL INFORMATION.
- CUT SCREWS TO LENGTH AT ASSEMBLY

***WARNING**
 ON INSTALLATION, SET WIRE DISC, ITEM 40 TO LARGEST WIRE SIZE SETTING. USE OF SETTINGS BELOW MINIMUM REQUIRED CRIMP HEIGHT SETTING WILL CAUSE DAMAGE TO CRIMP TOOLING.

PACIFIC VERSION
 Shown on sheets 3 of 4 & 4 of 4
 (Atlantic version shown on sheets 1 of 4 & 2 of 4)

SET UP GAUGE	LOC	DIST	REVISIONS			
2119599-1	A	66	REV	DATE	BY	APPD
			-	-	-	-
			-	-	-	-

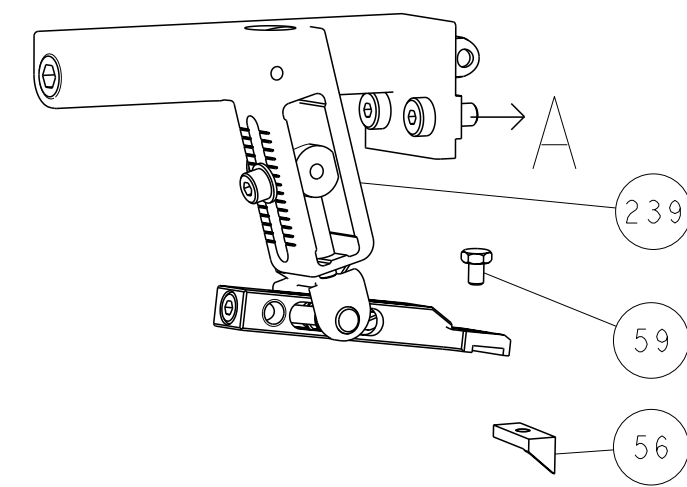
REV	DATE	BY	APPD	DESCRIPTION	ITEM NO
-	1	1	1	2119782-1 FINE ADJUST HEAD ASM, PACIFIC STYLE	251
-	-	-	1	2119640-1 PUSH ROD, AIR FEED	250
-	-	-	1	2079988-1 BUSHING, LCH5-12, MISUMI	249
-	1	1	1	1-22279-3 SPRING, COMPRESSION	246
-	-	2	-	2168400-6 SHCS, LOW HEAD, RoHS, M5 X 16	240
-	-	-	1	2119580-1 MECHANICAL FEED ASSEMBLY	239
-	-	-	1	2063440-1 AIR FEED MODULE	238
-	1	1	1	1673019-1 BLADE, SLUG	232
-	-	1	-	2119740-2 TAG IDENTIFICATION	213
-	-	1	-	1901094-3 SPACER, FEEDER	198
-	-	1	-	1976043-1 PIN, BALL LOCK, THREADED	180
-	1	1	1	993111-1 PIN, SLOTTED SPRING 3.0 X 20.0	177
-	-	-	2	21045-3 RING, RETAIN, EXTERN, 3/16 CRESCENT	172
-	1	1	1	994969-1 MAGNET, RARE EARTH HIGH ENERGY	166
-	REF	REF	REF	994970-2 COUNTER, MAGNETIC	164
-	-	-	1	240638-1 SPRING, FEED FINGER	163
-	1	1	1	8-21084-1 O-RING, .801 ID, .070 DIA. MAT.	152
-	-	-	1	2119641-2 FEED CAM, AIR FEED	151
-	1	1	1	2119798-2 DETENT PIN	145
-	1	1	1	2079383-8 SCR, BHSC, RoHS (M4 X 16)	144
-	-	-	1	2119653-2 FEED CAM, POST FEED	142
-	1	1	1	2119656-2 APPLICATOR BASIC ASSEMBLY, SF	141
-	1	1	1	2119650-1 RAM, ASIAN STYLE, SIDE FEED	140
-	1	1	1	2119092-2 BOLT, ADJUSTMENT	139
-	-	-	1	3-23627-7 PIN, RETAIN, GRVD, 3/16 X .854	137
-	-	-	1	2119799-1 HOLDER, FEED FINGER, AF	136
-	-	REF	-	SEE NOTE 4 MEMORY CHIP, PROGRAMMED	135
-	-	1	-	1633743-1 SERVO FEED LATCH ASM	133
-	-	1	-	1901694-1 FEED FINGER ASSEMBLY, SF	118
-	1	1	1	455888-5 SPACER, CRIMPER	82
-	1	1	1	2119956-1 DOCUMENTATION PACKAGE	71
-	1	-	1	2119740-1 TAG IDENTIFICATION	67
-	2	2	2	2168078-1 SCREW, DRIVE, RH, RoHS	66
-	1	1	1	2119793-1 LIMITER, ADJUSTMENT BOLT	63
-	3	3	3	992763-5 SCR, SET, SOC, CONE POINT, M3 x 4.0	62
-	-	-	1	5-18022-5 SCR, HEX HD CAP, M4 X 6.0	59
-	-	-	1	1338683-1 FEED PAWL	56
-	2	2	2	1-22284-0 SPRING, COMPRESSION	52
-	1	1	1	1-22281-8 SPRING, COMPRESSION	51
-	1	1	1	2168083-6 SCR, SKT HD CAP, RoHS, M5 X 65	50
-	-	-	1	18023-9 SCR, SKT HD CAP M4 X 6.0	49
-	-	-	1	2119652-1 FEED CAM, PRE FEED	48
-	2	2	2	2168083-9 SCR, SKT HD CAP, RoHS, M4 X 20	45
-	1	1	1	1-18023-1 SCR, SKT HD CAP M4 X 10.0	43
-	1	1	1	980371-4 SCR, SKT HD SHLDR 5.0 DIA X 6.0	42
-	1	1	1	2079383-7 SCR, BHSC, RoHS (M8 X 25)	41
-	1	1	1	2119645-1 DISC, NUMBERED FA WIRE ADJUSTMENT	40
-	1	1	1	2119957-1 APPLICATOR SHIM PACK	39
-	1	1	1	2119644-2 RAM WASHER, PRECISION	38
-	2	2	2	2168083-2 SCR, SKT HD CAP, RoHS, M4 X 8.0	36
-	2	2	2	18023-5 SCR, SKT HD CAP M3 X 12.0	34
-	2	2	2	2168083-1 SCR, SKT HD CAP, RoHS, M3 X 8.0	33
-	1	1	1	2161328-1 HEX HEAD, FLANGED, M5 x 8mm LONG	32
-	2	2	2	2-18032-5 SCR, SET, FLT POINT M5 X 20.0	31
-	1	1	1	1901086-3 PLATE, STRIP GUIDE	29
-	1	1	1	356835-1 LEVER, DRAG RELEASE	27
-	1	1	1	2119924-2 SHEAR, LOWER	22
-	1	1	1	2168083-2 SCR, SKT HD CAP, RoHS, M4 X 8.0	21
-	1	1	1	1-18028-2 WASHER, FLAT, REG M4	20
-	1	1	1	2119533-1 STRIPPER, SIDE FEED	19
-	1	1	1	1-2119928-6 FENCE	12
-	1	1	1	2119830-2 HOLDER, SLUG BLADE	11
-	1	1	1	2119923-1 ANVIL, SPECIAL	8
-	1	1	1	3-690754-6 DRAG, SPECIAL	7
-	1	1	1	1-679651-9 FRONT STRIP GUIDE	6
-	1	1	1	9-568176-6 CRIMPER, WIRE	1

DIMENSIONS:	TOLERANCES UNLESS OTHERWISE SPECIFIED:	APPROVED:	DATE:	NAME:
mm	9 PLC ±.5 1 PLC ±0.5 3 PLC ±0.13 5 PLC ±0.013 4 PLC ±0.0001	WEAVER STAKEM ELBIN	14SEP2011 14SEP2011 14SEP2011	TE Connectivity Harrisburg, PA 17105-3608 Ocean Side Feed Applicator
MATERIAL:	FINISH:	WEIGHT:	SCALE:	RESTRICTED TO:
			1:2	

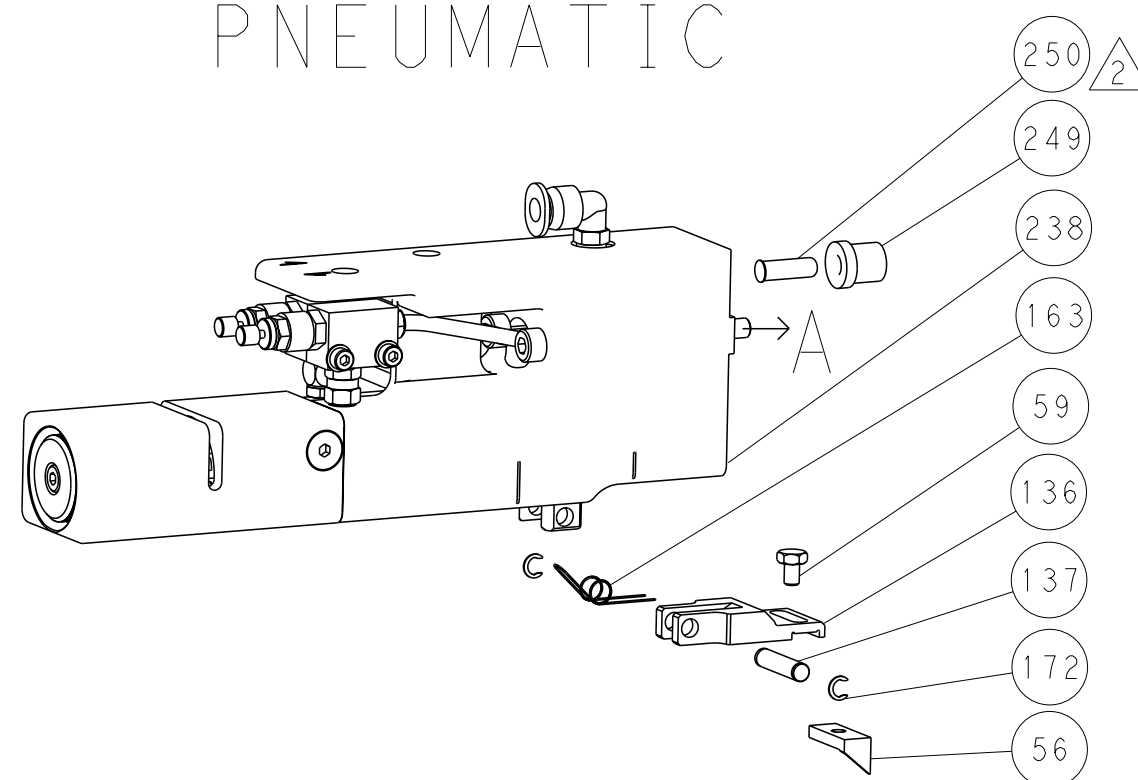
LOC	DIST	REV	DESCRIPTION	DATE	DWN	APVD
A	66		SEE SHEET 1			

DIMENSIONING AND TOLERANCING PER ASME Y14.5M-2009

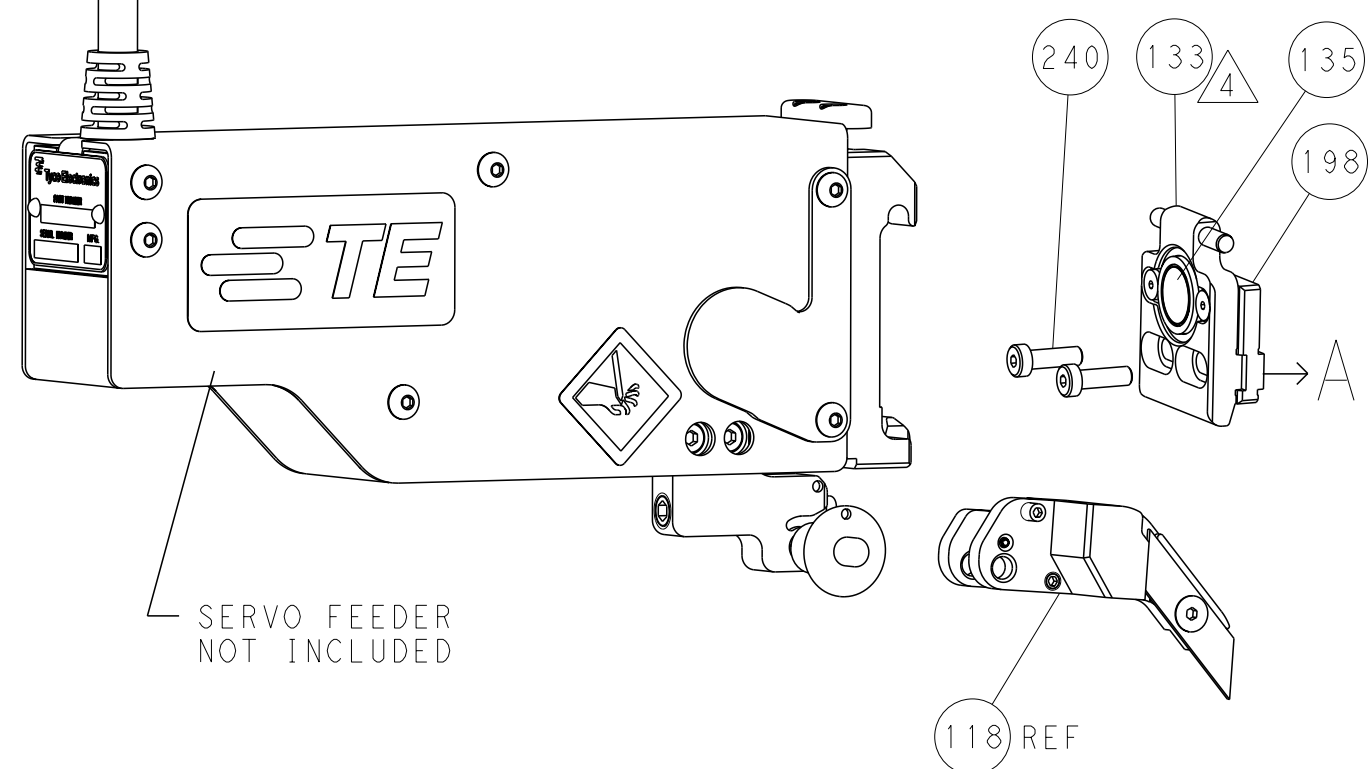
FEED TYPE MECHANICAL



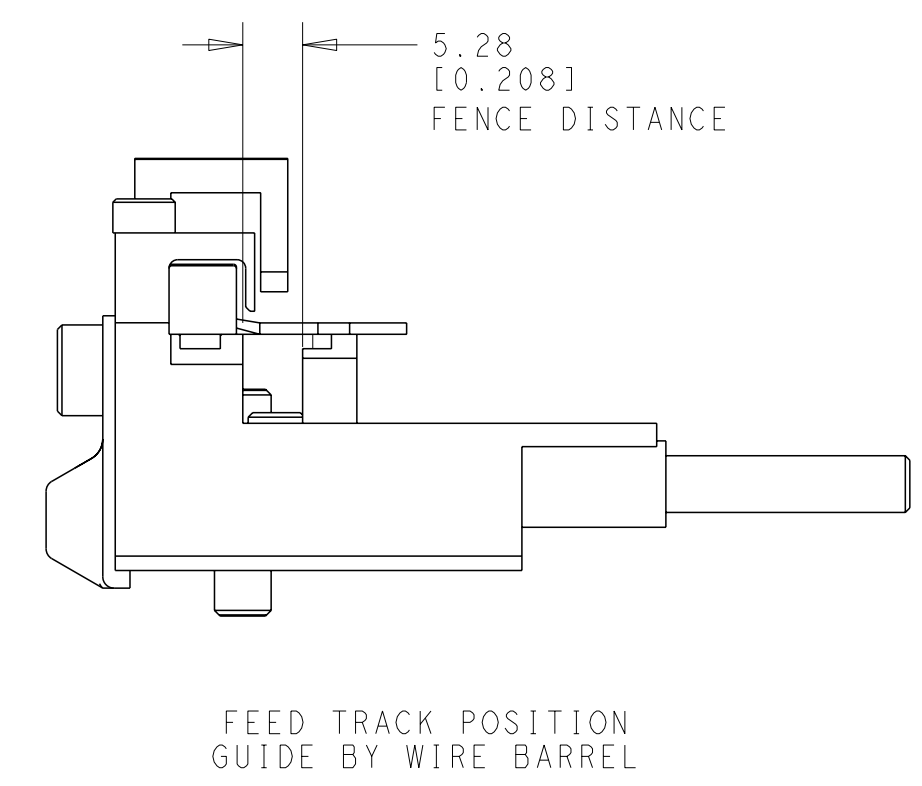
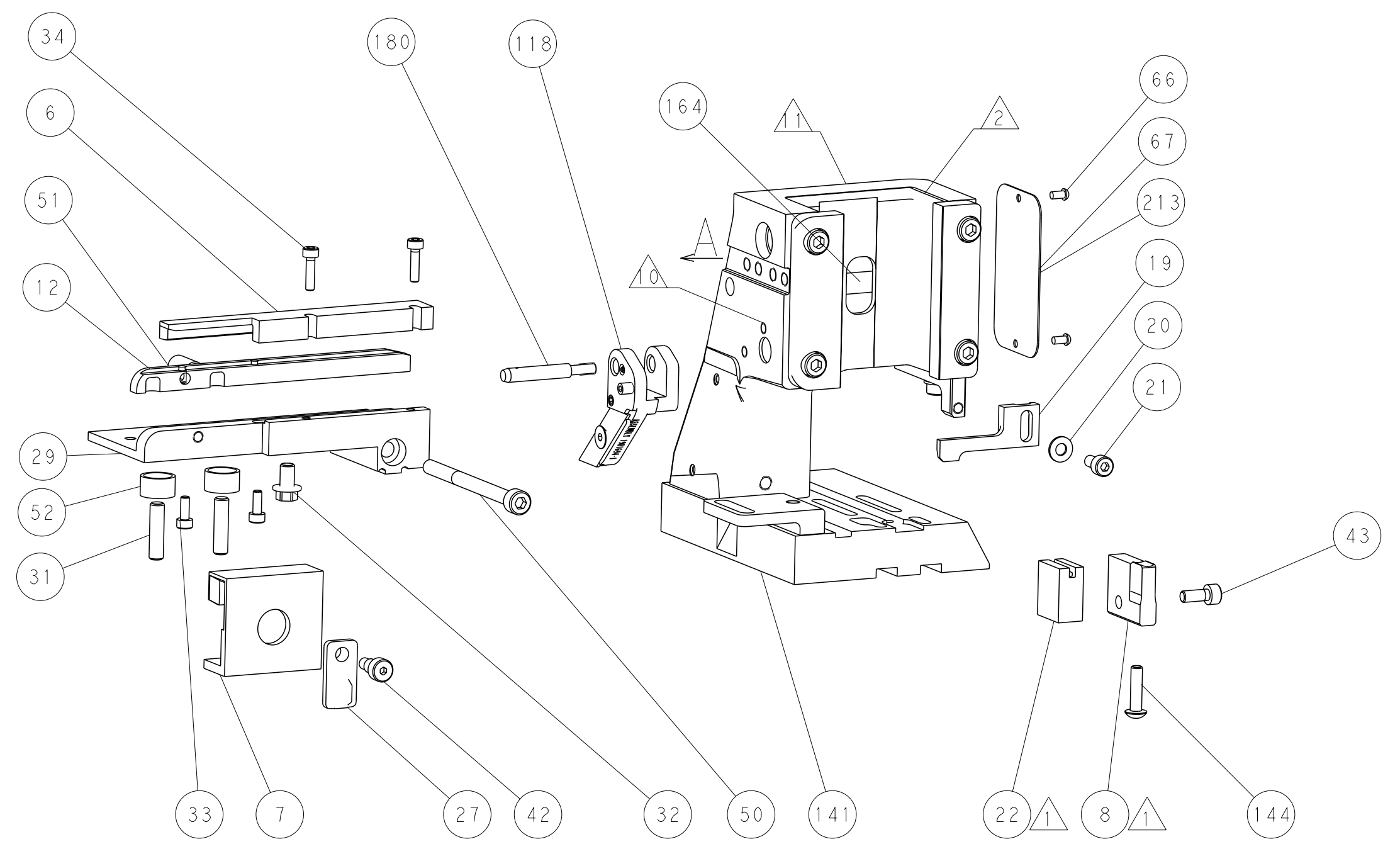
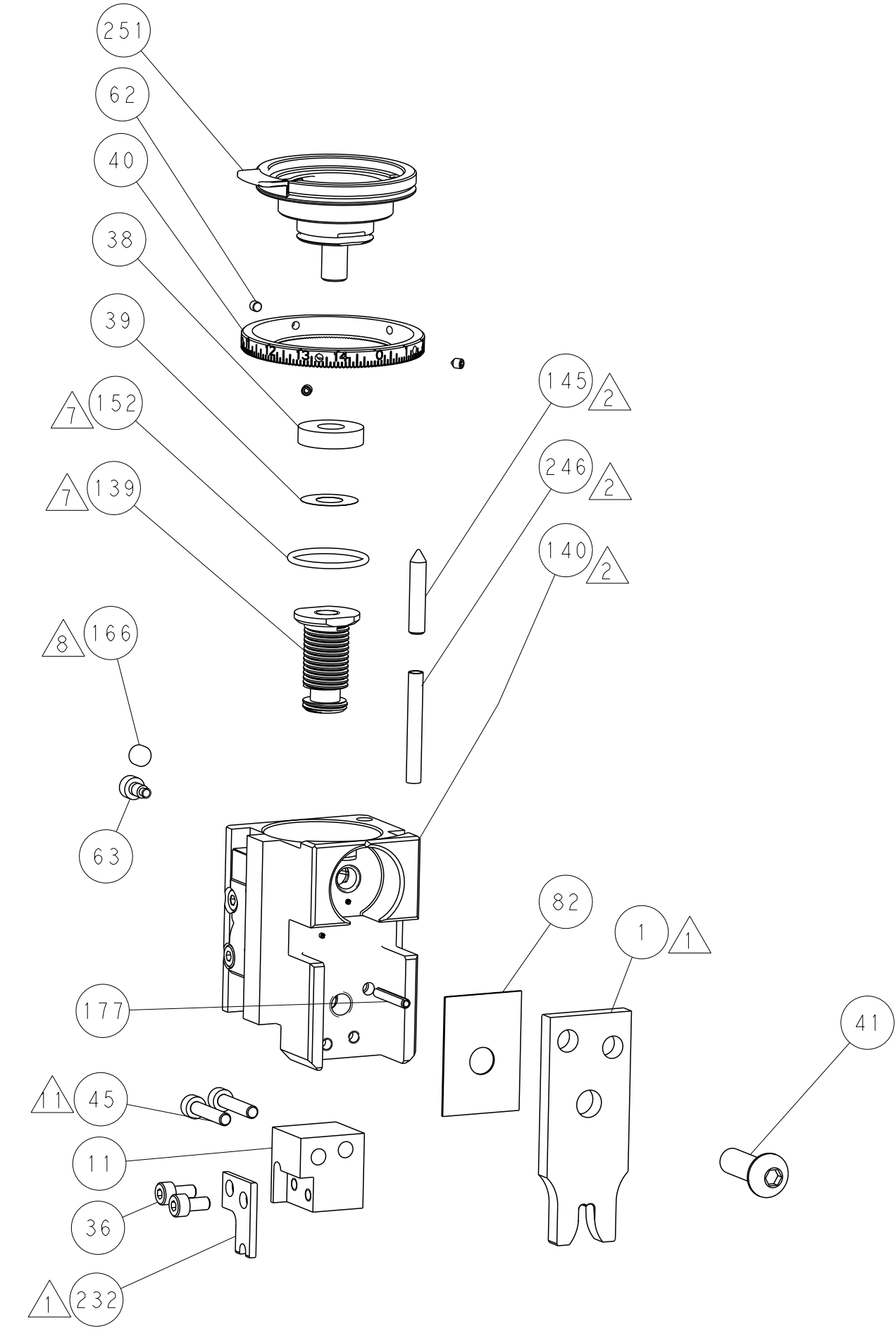
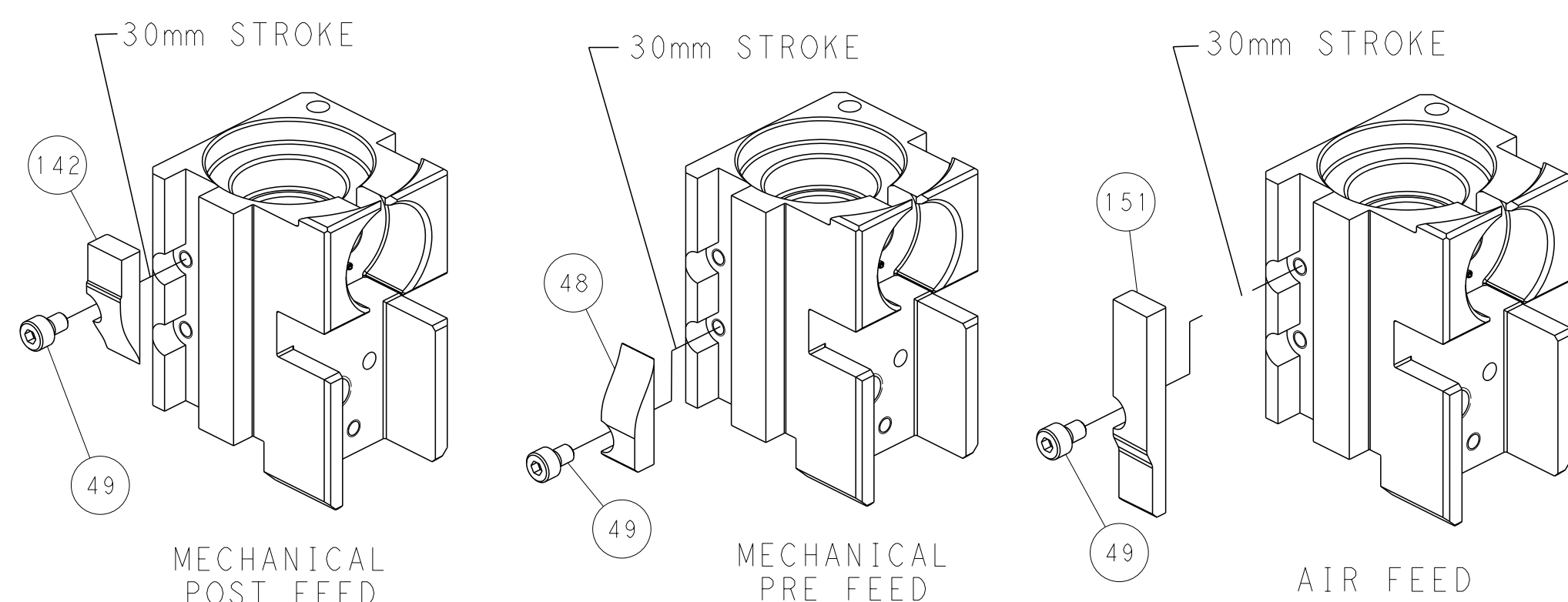
PNEUMATIC



SERVO LATCH PLATE



CAM POSITIONS



PACIFIC VERSION
 Shown on sheets 3 of 4 & 4 of 4
 (Atlantic version shown on sheets 1 of 4 & 2 of 4)

<small>THIS DRAWING IS UNPUBLISHED. RELEASED FOR PUBLICATION 2011. ALL RIGHTS RESERVED. THIS DRAWING IS UNPUBLISHED. RELEASED FOR PUBLICATION 2011. ALL RIGHTS RESERVED. THIS DRAWING IS UNPUBLISHED. RELEASED FOR PUBLICATION 2011. ALL RIGHTS RESERVED.</small>		DWN: B. WEAVER 14SEP2011 CHK: K. STAKEM 14SEP2011 APVD: T. ELBIN 14SEP2011	NAME: TE Connectivity Harrisburg, PA 17105-3608
DIMENSIONS: mm TOLERANCES UNLESS OTHERWISE SPECIFIED: 9 PLC ±.5 1 PLC ±0.13 5 PLC ±0.013 4 PLC ±0.001 ANGLES FINISH ±.		PRODUCT SPEC: APPLICATION SPEC:	SIZE: CAGE CODE: DRAWING NO: RESTRICTED TO: A 00779 C=2151498
MATERIAL:		WEIGHT:	CUSTOMER ACCESSIBLE PRODUCTION DRAWING SCALE: 1:2 SHEET 4 OF 4 REV A