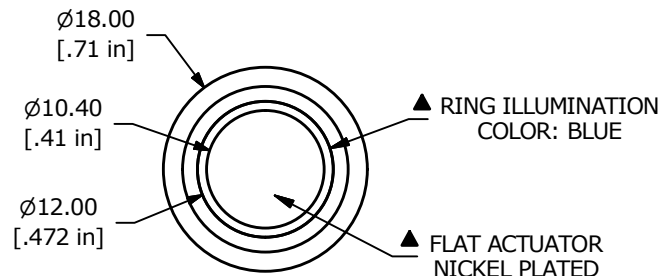
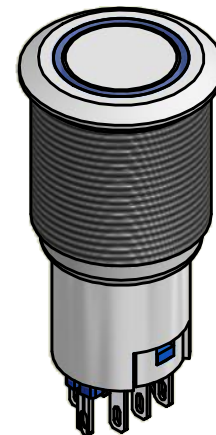


PANEL CUTOUT  
MAX. PANEL THICKNESS  
14.0mm [.551]



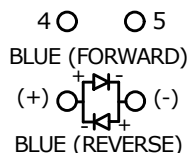
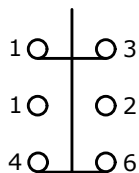
▲ RING ILLUMINATION  
COLOR: BLUE

▲ FLAT ACTUATOR  
NICKEL PLATED



▲ BODY  
NICKEL PLATED

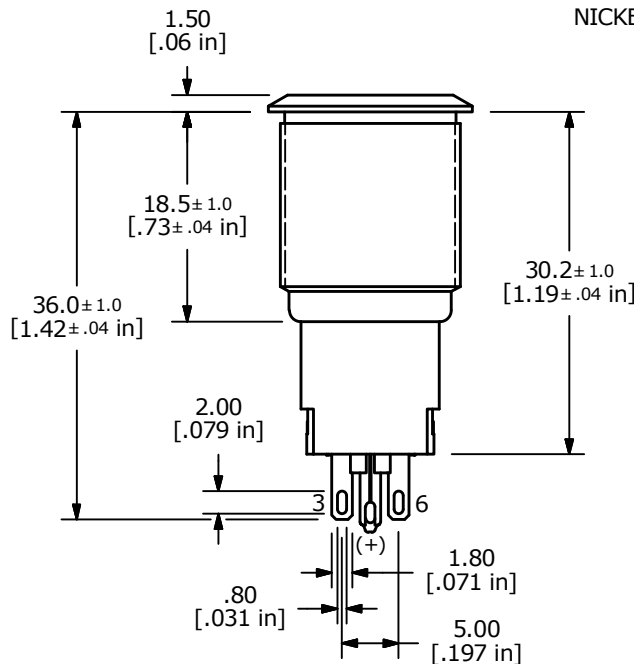
M16x1.0



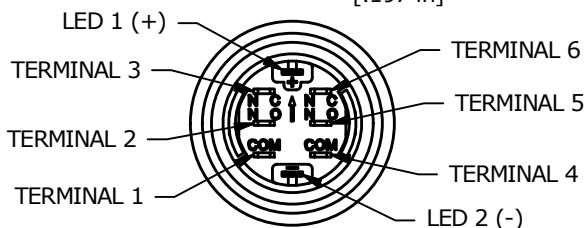
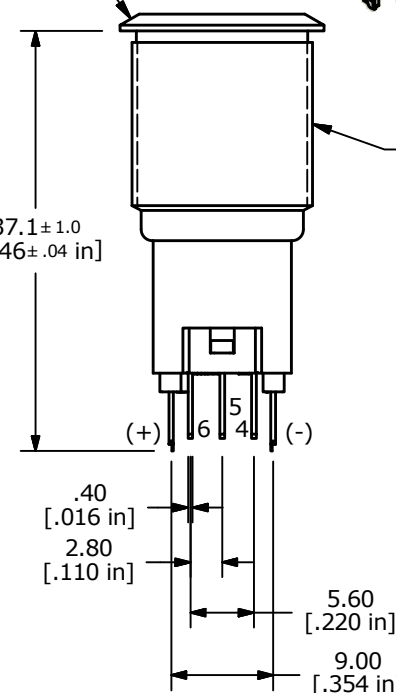
▲ DPDT ON-(ON)  
CONTACT CONFIGURATION

SWITCH FUNCTION	
POS. 1	POS. 2
ON	(ON)
1-3, 4-6	1-2, 4-5

(ON) = MOMENTARY



▲ 37.1±1.0  
[1.46±.04 in]



NOTE:

- ALL DIMENSIONS IN MM [INCH]
- GENERAL TOLERANCE: X.X = ±0.4  
X.XX = ±0.25
- TERMINAL NUMBERS FOR REF ONLY
- CONTACT MATERIAL: SILVER
- RATING: 2A 48VDC
- ELECTRIC LIFE: 50,000 MAKE-AND-BREAK CYCLES AT FULL LOAD.
- INSULATION RESISTANCE: 1,000 MΩ MIN.
- DIELECTRIC STRENGTH: 2,000 VAC MIN. FOR 1 MINUTE
- CONTACT RESISTANCE: 50mΩ MAX. @ 1A 12VDC
- OPERATING TEMP.: -20°C to 55°C
- ▲ DENOTES CRITICAL PARAMETER.
- HARDWARE SUPPLIED: O-RING AND HEXNUT
- INGRESS RATING: IP40
- 2002/95/EC (ROHS) COMPLIANT
- LAMP VOLTAGE: 12V

E	22106	UPDATE TO NEW TERMINAL HOUSING	12/28/15	MW
D	20452	CORRECT CONTACT CONFIG.	02/02/12	BMA
C	20423	UPDATE AND CONVERT	01/25/12	BMA
REV	PCR NO	DESCRIPTION	DATE	BY



TITLE PV3F2H0NN-344				
SCALE	DATE	DR	DWG	REV
1.5:1	1/25/2012	BMA	52-PV3F2H0NN344	E

THE INFORMATION CONTAINED IN THIS DOCUMENT IS PROPRIETARY TO E-SWITCH AND IS NOT TO BE COPIED OR TRANSFERRED