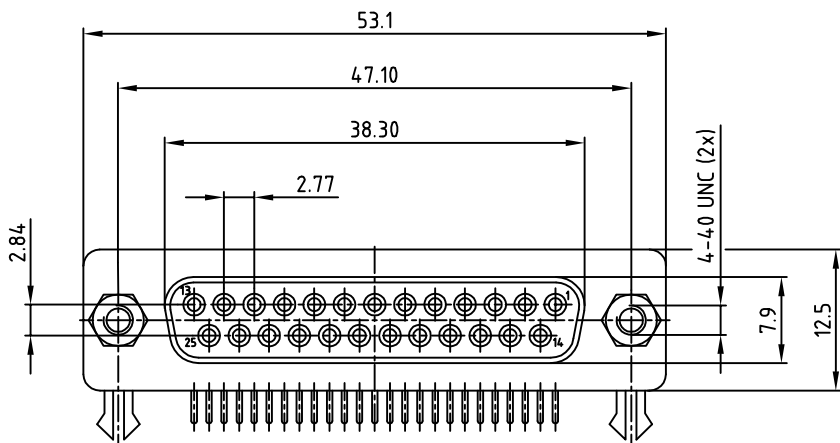
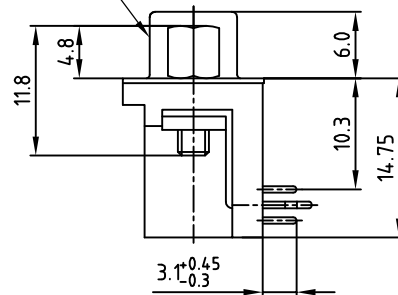
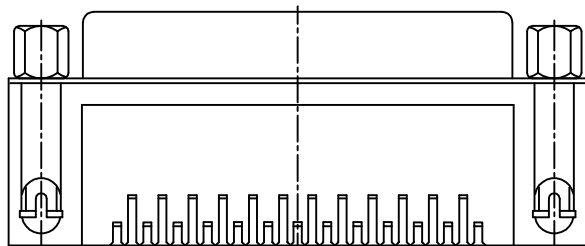


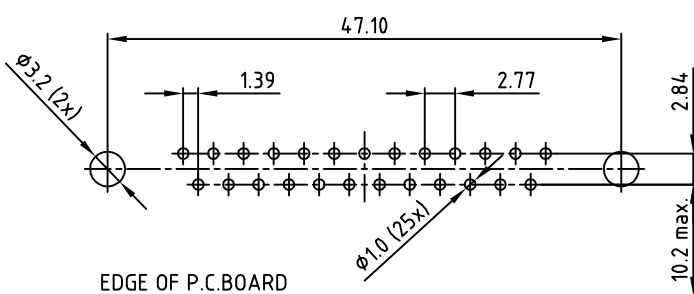
used for: D-SUB

SEE NOTE 4



RECOMMENDED P.C.B. LAYOUT (TOP VIEW)

TOLERANCES: ±0.05mm



SPECIFICATION

1. MATERIAL:
  - INSULATOR: THERMAL PLASTIC UL 94 V-0
  - CONTACTS: COPPER ALLOY
  - SHELL: STEEL
  - RIVET, BOARDLOCK: COPPER ALLOY
2. CONTACT PLATING:
  - UNDERPLATE: 50µm NICKEL
  - CONTACT AREA: GOLD FLASH
  - SOLDER TAILS AREA: GOLD FLASH
3. ELECTRICAL:
  - OPERATION VOLTAGE: 250 V AC max.
  - CURRENT RATING: 3 A
  - CONTACT RESISTANCE: 15 mOhm
  - INSULATION RESISTANCE: 3000 MOhm min. @ 500 V DC
  - DIELECTRIC WITHSTANDING VOLTAGE: 1000 V AC / MINUTE
  - OPERATING TEMPERATURE: -55°C TO +105°C
4. CONNECTOR IS PART MARKED: DLS3XS6AK44X CONEC ABC

Directive 2002/95/EC RoHS compliant

THIS DRAWING MAY NOT BE COPIED OR REPRODUCED IN ANY WAY, AND MAY NOT BE PASSED ON TO A THIRD PARTY, WITHOUT WRITTEN PERMISSION. OWNERSHIP AND COPYRIGHT OF CONEC Gmbh DO NOT ALTER CAD DRAWING BY HAND

rev.	description	date	name
a	Original		

Unless Otherwise Specified Tolerance	dim. in mm
0, ±0.5	
0, ±0.3	
00 ±0.2	

scale:	2:1
material:	SEE SPECIFICATION
title:	D-SUB R/A 9.4mm CONNECTOR 25pos. FEMALE with 4.8 x 11.8mm hex bolt
dwg no:	16K1A3216
part no:	DLS3XS6AK44X

DIN-A  
3  
sh: 1/1