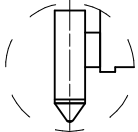
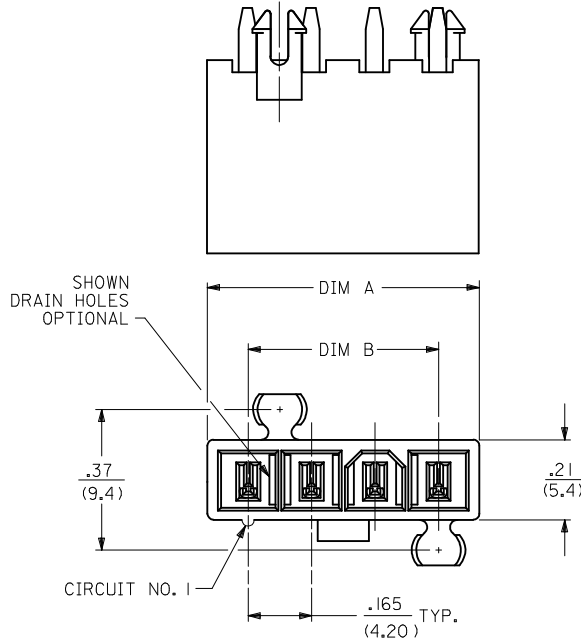
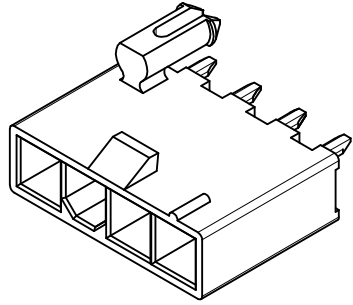
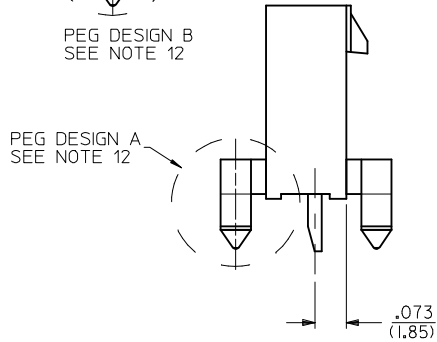


CKT SIZE	DIM A	DIM B	DIM D
3	.54 (13.8)	.331 (8.40)	.49 (12.5)
4	.71 (18.0)	.496 (12.60)	.50 (12.8)
5	.87 (22.2)	.661 (16.80)	.50 (12.8)

- NOTES:
- MATERIALS:
HOUSING:
225=NYLON (PA6), UL94 V-0, COLOR: BLACK, IEC 60335-1, 4th EDITION GLOW WIRE CAPABLE
TERMINALS:
BRASS
2. TERMINAL PLATING:
S=".000100/(0.00254) MIN. BRIGHT TIN OVER
.000050/(0.00127) MIN. NICKEL
GS=".000030/(0.00076) MIN. SELECT GOLD AND
.000100/(0.00254) MIN. SELECT MATTE TIN OVER
.000050/(0.00127) MIN. NICKEL OVERALL
MS=".000100/(0.00254) MIN. MATTE TIN OVER
.000050/(0.00127) MIN. NICKEL
3. PRODUCT SPECIFICATION: PS-5556-001
4. PACKAGING: SEE CHARTS
5. PART MATES WITH MINI-FIT JR. RECEPTACLE NO. 5557.
6. MOUNTING OPTIONS:
BLANK=DUAL ROW WITHOUT PEGS
2=DUAL ROW WITH MOUNTING PEGS
3=SINGLE ROW WITH MOUNTING PEGS
7. PART IS NOT DESIGNED FOR CURRENT SHARING.
8. PARTS ARE NOT DESIGNED TO BE MATED OR UN-MATED WHILE CIRCUITS ARE LIVE.
9. LOCATION OF .118±.002/(3.00±.05) DIAMETER HOLES ON P.C. BOARD IS FOR OPTIONAL PEGS.
10. ANTI-SHINGLING RIB MAY OR MAY NOT APPEAR ON HOUSINGS.
11. PART CONFORMS TO CLASS "B" REQUIREMENTS OF COSMETIC SPECIFICATION PS-45499-002 WITH THE EXCEPTION OF DISCOLORATION, FLASH AND SINK ON THE HOUSING MEET CLASS "C" REQUIREMENTS.
12. 4 CIRCUIT PARTS WILL HAVE PEG DESIGN A. ALL OTHER CIRCUIT SIZES WILL HAVE PEG DESIGN B.

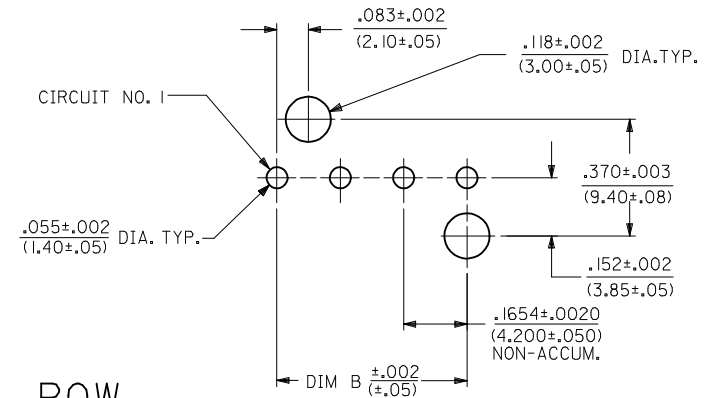
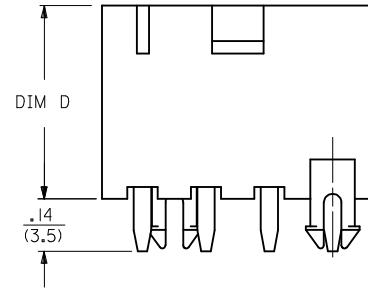
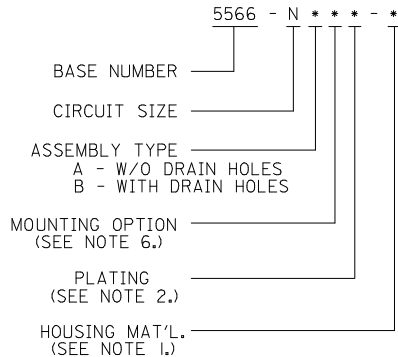


PEG DESIGN B
SEE NOTE 12



PEG DESIGN A
SEE NOTE 12

LEGEND:

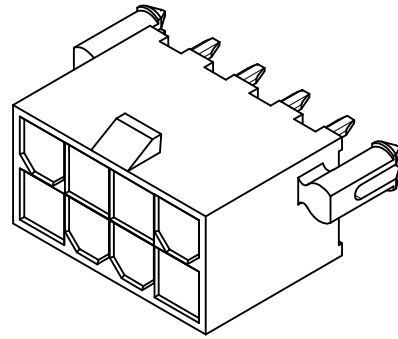
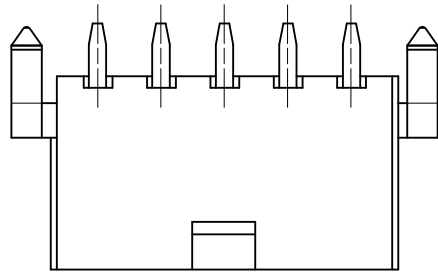


SEE SHT. 2 FOR DUAL ROW

* THE CHART FOR SINGLE ROW PRODUCT IS ON PAGE 3

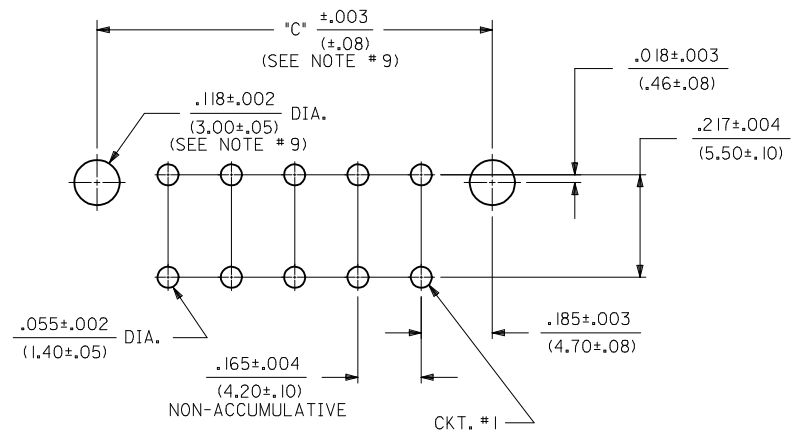
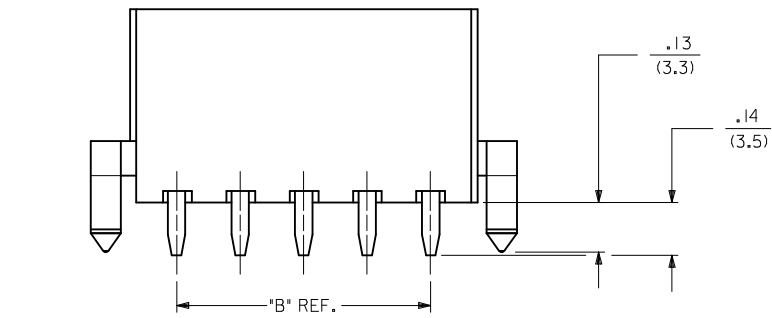
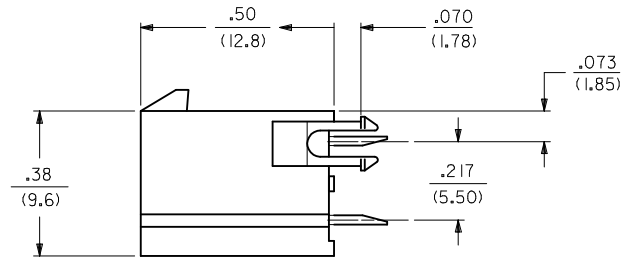
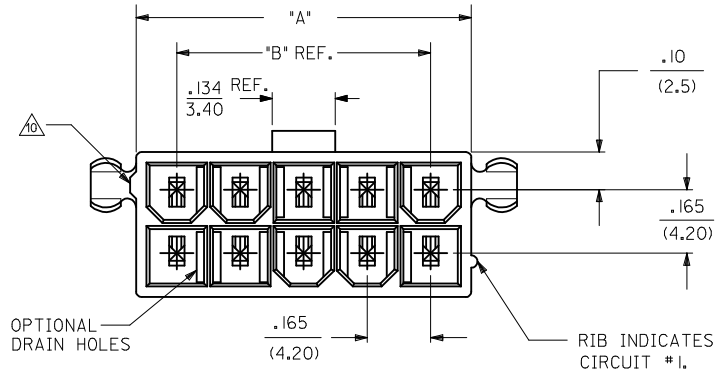
RECOMMENDED HOLE LAYOUT FOR
.070 (1.78) MAX. THICK P. C. BOARD
VIEWED FROM COMPONENT SIDE

CORRECT PEGS IEC NO: UCP2014-0016 DR:VINHNGUYEN 2013/07/17 CHKD:JBELL 2013/07/17 APPR:FSMITH 2013/07/19	DESCRIPTION CORRECT PEGS	QUALITY SYMBOLS	GENERAL TOLERANCES (UNLESS SPECIFIED)	DIMENSION STYLE	SCALE	DESIGN UNITS	THIRD ANGLE PROJECTION
		$\nabla = 0$ $\nabla = 0$ $\nabla = 0$	mm INCH 4 PLACES ± --- ± --- 3 PLACES ± --- ± .015 2 PLACES ± 0.38 ± .020 1 PLACE ± 0.50 ± --- ANGULAR ± 1/2°	IN/MM DRAWN BY DATE LSCHMIDT 2008/01/22 CHECKED BY DATE ADERR 2008/01/24 APPROVED BY DATE FSMITH 2011/11/11	4:1 METRIC	MINI-FIT VERT HDR ASSY W & W/O PEGS/DRAIN HOLES SINGLE AND DUAL ROW	
		DRAFT WHERE APPLICABLE MUST REMAIN WITHIN DIMENSIONS	MATERIAL NO. SEE CHARTS	DOCUMENT NO. SD-5566-225	SHEET NO. 1 OF 4		
		THIS DRAWING CONTAINS INFORMATION THAT IS PROPRIETARY TO MOLEX INCORPORATED AND SHOULD NOT BE USED WITHOUT WRITTEN PERMISSION					



8 CKT SHOWN

CIRCUIT SIZE	DIM. "A"	DIM. "B"	DIM. "C"
2	.21 (5.4)	—	.370 (9.40)
4	.38 (9.6)	.17 (4.2)	.535 (13.60)
6	.54 (13.8)	.33 (8.4)	.701 (17.80)
8	.71 (18.0)	.50 (12.6)	.866 (22.00)
10	.87 (22.2)	.66 (16.8)	1.031 (26.20)
12	1.04 (26.4)	.83 (21.0)	1.197 (30.40)
14	1.20 (30.6)	.99 (25.2)	1.362 (34.60)
16	1.37 (34.8)	1.16 (29.4)	1.528 (38.80)
18	1.54 (39.0)	1.32 (33.6)	1.693 (43.00)
20	1.70 (43.2)	1.49 (37.8)	1.858 (47.20)
22	1.87 (47.4)	1.65 (42.0)	2.024 (51.40)
24	2.03 (51.6)	1.82 (46.2)	2.189 (55.60)



RECOMMENDED HOLE LAYOUT FOR .070/(1.78) MAX. THICK P. C. BOARD
VIEWED FROM COMPONENT SIDE

SEE SHT. 1 FOR SINGLE ROW
* THE CHART FOR DUAL ROW PRODUCT IS ON PAGE 4

SEE SHEET 1 EC NO: UCP2014-0016 DRAWINGUYEN 2013/07/17 CHKD:JBELL 2013/07/17 APPR:FSMITH 2013/07/19 A9	QUALITY SYMBOLS ▽=0 ▽=0 ▽=0	GENERAL TOLERANCES (UNLESS SPECIFIED)		DIMENSION STYLE IN/MM		SCALE 4:1	DESIGN UNITS METRIC	THIRD ANGLE PROJECTION	
		4 PLACES ± --- ± ---	3 PLACES ± --- ± .015	DRAWN BY LSCHMIDT	DATE 2008/01/22	TITLE MINI-FIT VERT HDR ASSY W & W/O PEGS/DRAIN HOLES SINGLE AND DUAL ROW			
		2 PLACES ± 0.38 ± .020	1 PLACE ± 0.50 ± ---	CHECKED BY ADERR	DATE 2008/01/24	APPROVED BY FSMITH			
		ANGULAR ± 1/2°		MATERIAL NO. SEE CHART		DOCUMENT NO. SD-5566-225		SHEET NO. 2 OF 4	
DRAFT WHERE APPLICABLE MUST REMAIN WITHIN DIMENSIONS				THIS DRAWING CONTAINS INFORMATION THAT IS PROPRIETARY TO MOLEX INCORPORATED AND SHOULD NOT BE USED WITHOUT WRITTEN PERMISSION					

	13	12	11	10	9	8	7	6	5	4	3	2	1
J	PLATING:		100 M.I. TIN - PLATING CODE 'S'		PLATING:		PLATING:		PLATING:		PLATING:		
	DRAIN HOLES:		WITHOUT DRAIN HOLES		DRAIN HOLES:		DRAIN HOLES:		DRAIN HOLES:		DRAIN HOLES:		
	MTG. OPTION:		WITH PEGS		MTG. OPTION:		MTG. OPTION:		MTG. OPTION:		MTG. OPTION:		
	PACKAGING:		TRAY PACK PER PK-5566-002		PACKAGING:		PACKAGING:		PACKAGING:		PACKAGING:		
I	PART NO.	ENG. NO.	CKTS		PART NO.	ENG. NO.	CKTS		PART NO.	ENG. NO.	CKTS		
	50-36-1809	5566-03A3S-225	3				3				3		
	50-36-2367	5566-04A3S-225	4				4				4		
	50-36-1819	5566-05A3S-225	5				5				5		



SEE SHEET 1 EC NO: UCP2014-0016 DRAWN: NGUYEN 2013/07/17 CHKD: BELL 2013/07/17 APPR: FSMITH 2013/07/19	DESCRIPTION REV	QUALITY SYMBOLS	GENERAL TOLERANCES (UNLESS SPECIFIED)	DIMENSION STYLE	SCALE	DESIGN UNITS	THIRD ANGLE PROJECTION															
		$\nabla = 0$ $\nabla = 0$ $\nabla = 0$	<table border="1"> <tr><th colspan="2">mm</th><th>INCH</th></tr> <tr><td>4 PLACES</td><td>\pm ---</td><td>\pm ---</td></tr> <tr><td>3 PLACES</td><td>\pm ---</td><td>\pm .015</td></tr> <tr><td>2 PLACES</td><td>\pm 0.38</td><td>\pm .020</td></tr> <tr><td>1 PLACE</td><td>\pm 0.50</td><td>\pm ---</td></tr> </table>	mm		INCH	4 PLACES	\pm ---	\pm ---	3 PLACES	\pm ---	\pm .015	2 PLACES	\pm 0.38	\pm .020	1 PLACE	\pm 0.50	\pm ---	IN/MM	1:1	METRIC	
		mm		INCH																		
		4 PLACES	\pm ---	\pm ---																		
3 PLACES	\pm ---	\pm .015																				
2 PLACES	\pm 0.38	\pm .020																				
1 PLACE	\pm 0.50	\pm ---																				
	<table border="1"> <tr><td>DRAWN BY</td><td>DATE</td></tr> <tr><td>LSCHMIDT</td><td>2008/01/22</td></tr> <tr><td>CHECKED BY</td><td>DATE</td></tr> <tr><td>ADERR</td><td>2008/01/24</td></tr> <tr><td>APPROVED BY</td><td>DATE</td></tr> <tr><td>FSMITH</td><td>2011/11/11</td></tr> </table>	DRAWN BY	DATE	LSCHMIDT	2008/01/22	CHECKED BY	DATE	ADERR	2008/01/24	APPROVED BY	DATE	FSMITH	2011/11/11	TITLE	MINI-FIT VERT HDR ASSY W & W/O PEGS/DRAIN HOLES SINGLE AND DUAL ROW							
DRAWN BY	DATE																					
LSCHMIDT	2008/01/22																					
CHECKED BY	DATE																					
ADERR	2008/01/24																					
APPROVED BY	DATE																					
FSMITH	2011/11/11																					
A9		DRAFT WHERE APPLICABLE MUST REMAIN WITHIN DIMENSIONS	MATERIAL NO. SEE CHART	DOCUMENT NO. SD-5566-225	SHEET NO. 3 OF 4																	

	12	11	10	9	8	7	6	5	4	3	2	1
--	----	----	----	---	---	---	---	---	---	---	---	---

	13	12	11	10	9	8	7	6	5	4	3	2	1
J	PLATING: 100 M.I. TIN - PLATING CODE 'S'			PLATING: 100 M.I. TIN - PLATING CODE 'S'			PLATING: 30 M.I. GOLD - PLATING CODE 'GS'			PLATING: 30 M.I. GOLD - PLATING CODE 'GS'			
J	DRAIN HOLES: WITHOUT DRAIN HOLES			DRAIN HOLES: WITHOUT DRAIN HOLES			DRAIN HOLES: WITHOUT DRAIN HOLES			DRAIN HOLES: WITHOUT DRAIN HOLES			
J	MTG. OPTION: WITHOUT PEGS			MTG. OPTION: WITH PEGS			MTG. OPTION: WITHOUT PEGS			MTG. OPTION: WITH PEGS			
J	PACKAGING: TRAY PACK PER PK-5566-001			PACKAGING: TRAY PACK PER PK-5566-001			PACKAGING: TRAY PACK PER PK-5566-001			PACKAGING: TRAY PACK PER PK-5566-001			
J	COLOR: BLACK			COLOR: BLACK			COLOR: BLACK			COLOR: BLACK			
I	PART NO.	ENG. NO.	CKTS	PART NO.	ENG. NO.	CKTS	PART NO.	ENG. NO.	CKTS	PART NO.	ENG. NO.	CKTS	
I	50-36-1882	5566-02AS-225	2	50-36-1699	5566-02A2S-225	2	469990037	5566-02AGS-225	2	469990049	5566-02A2GS-225	2	
I	50-36-1884	5566-04AS-225	4	50-36-1702	5566-04A2S-225	4	469990038	5566-04AGS-225	4	469990050	5566-04A2GS-225	4	
I	50-36-1697	5566-06AS-225	6	50-36-1704	5566-06A2S-225	6	469990039	5566-06AGS-225	6	469990051	5566-06A2GS-225	6	
I	50-36-1683	5566-08AS-225	8	50-36-1706	5566-08A2S-225	8	469990040	5566-08AGS-225	8	469990052	5566-08A2GS-225	8	
I	50-36-1741	5566-10AS-225	10	50-36-1708	5566-10A2S-225	10	469990041	5566-10AGS-225	10	469990053	5566-10A2GS-225	10	
I	50-36-1886	5566-12AS-225	12	50-36-1711	5566-12A2S-225	12	469990042	5566-12AGS-225	12	469990054	5566-12A2GS-225	12	
H	50-36-1888	5566-14AS-225	14	NOT TOOLED	5566-14A2S-225	14	469990043	5566-14AGS-225	14	NOT TOOLED	5566-14A2GS-225	14	
H	50-36-1891	5566-16AS-225	16	NOT TOOLED	5566-16A2S-225	16	469990044	5566-16AGS-225	16	NOT TOOLED	5566-16A2GS-225	16	
H	NOT TOOLED	5566-18AS-225	18	NOT TOOLED	5566-18A2S-225	18	NOT TOOLED	5566-18AGS-225	18	NOT TOOLED	5566-18A2GS-225	18	
H	NOT TOOLED	5566-20AS-225	20	NOT TOOLED	5566-20A2S-225	20	NOT TOOLED	5566-20AGS-225	20	NOT TOOLED	5566-20A2GS-225	20	
H	NOT TOOLED	5566-22AS-225	22	NOT TOOLED	5566-22A2S-225	22	NOT TOOLED	5566-22AGS-225	22	NOT TOOLED	5566-22A2GS-225	22	
H	NOT TOOLED	5566-24AS-225	24	NOT TOOLED	5566-24A2S-225	24	NOT TOOLED	5566-24AGS-225	24	NOT TOOLED	5566-24A2GS-225	24	
G		-			-								
G		-			-								

F	PLATING: 100 M.I. TIN - PLATING CODE 'MS'		
F	DRAIN HOLES: WITHOUT DRAIN HOLES		
F	MTG. OPTION: WITHOUT PEGS		
F	PACKAGING: TRAY PACK PER PK-5566-001		
F	COLOR: BLACK		
E	PART NO.	ENG. NO.	CKTS
E			2
E			4
E			6
E			8
E			10
E			12
E			14
E			16
D	46999-0255	5566-18AMS-225	18
D			20
D			22
D			24

A	SEE SHEET 1																																																
B	<table border="1"> <tr> <td rowspan="4"> EC NO: UCP2014-0016 2013/07/17 DRAWN: NGUYEN CHKD: BELL 2013/07/17 APPR: FSMITH 2013/07/19 </td> <td>QUALITY SYMBOLS</td> <td>GENERAL TOLERANCES (UNLESS SPECIFIED)</td> <td>DIMENSION STYLE</td> <td>SCALE</td> <td>DESIGN UNITS</td> <td>THIRD ANGLE PROJECTION</td> </tr> <tr> <td>▽=0</td> <td>4 PLACES ± --- ± ---</td> <td>IN/MM</td> <td>1:1</td> <td>METRIC</td> <td rowspan="4"> TITLE: MINI-FIT VERT HDR ASSY W & W/O PEGS/DRAIN HOLES SINGLE AND DUAL ROW MOLEX INCORPORATED MATERIAL NO. SD-5566-225 DOCUMENT NO. SD-5566-225 SHEET NO. 4 OF 4 </td> </tr> <tr> <td>▽=0</td> <td>3 PLACES ± --- ± .015</td> <td>mm</td> <td>DRAWN BY</td> <td>DATE</td> </tr> <tr> <td>▽=0</td> <td>2 PLACES ± 0.38 ± .020</td> <td>INCH</td> <td>LSCHMIDT</td> <td>2008/01/22</td> </tr> <tr> <td>▽=0</td> <td>1 PLACE ± 0.50 ± ---</td> <td>APPROVED BY</td> <td>DATE</td> <td>ADERR</td> <td>2008/01/24</td> </tr> <tr> <td></td> <td>ANGULAR ± 1/2°</td> <td>DRAFT WHERE APPLICABLE MUST REMAIN WITHIN DIMENSIONS</td> <td>FSMITH</td> <td>2011/11/11</td> <td colspan="2"></td> </tr> </table>													EC NO: UCP2014-0016 2013/07/17 DRAWN: NGUYEN CHKD: BELL 2013/07/17 APPR: FSMITH 2013/07/19	QUALITY SYMBOLS	GENERAL TOLERANCES (UNLESS SPECIFIED)	DIMENSION STYLE	SCALE	DESIGN UNITS	THIRD ANGLE PROJECTION	▽=0	4 PLACES ± --- ± ---	IN/MM	1:1	METRIC	TITLE: MINI-FIT VERT HDR ASSY W & W/O PEGS/DRAIN HOLES SINGLE AND DUAL ROW MOLEX INCORPORATED MATERIAL NO. SD-5566-225 DOCUMENT NO. SD-5566-225 SHEET NO. 4 OF 4	▽=0	3 PLACES ± --- ± .015	mm	DRAWN BY	DATE	▽=0	2 PLACES ± 0.38 ± .020	INCH	LSCHMIDT	2008/01/22	▽=0	1 PLACE ± 0.50 ± ---	APPROVED BY	DATE	ADERR	2008/01/24		ANGULAR ± 1/2°	DRAFT WHERE APPLICABLE MUST REMAIN WITHIN DIMENSIONS	FSMITH	2011/11/11		
EC NO: UCP2014-0016 2013/07/17 DRAWN: NGUYEN CHKD: BELL 2013/07/17 APPR: FSMITH 2013/07/19	QUALITY SYMBOLS	GENERAL TOLERANCES (UNLESS SPECIFIED)	DIMENSION STYLE	SCALE	DESIGN UNITS	THIRD ANGLE PROJECTION																																											
	▽=0	4 PLACES ± --- ± ---	IN/MM	1:1	METRIC	TITLE: MINI-FIT VERT HDR ASSY W & W/O PEGS/DRAIN HOLES SINGLE AND DUAL ROW MOLEX INCORPORATED MATERIAL NO. SD-5566-225 DOCUMENT NO. SD-5566-225 SHEET NO. 4 OF 4																																											
	▽=0	3 PLACES ± --- ± .015	mm	DRAWN BY	DATE																																												
	▽=0	2 PLACES ± 0.38 ± .020	INCH	LSCHMIDT	2008/01/22																																												
▽=0	1 PLACE ± 0.50 ± ---	APPROVED BY	DATE	ADERR	2008/01/24																																												
	ANGULAR ± 1/2°	DRAFT WHERE APPLICABLE MUST REMAIN WITHIN DIMENSIONS	FSMITH	2011/11/11																																													
C	THIS DRAWING CONTAINS INFORMATION THAT IS PROPRIETARY TO MOLEX INCORPORATED AND SHOULD NOT BE USED WITHOUT WRITTEN PERMISSION																																																