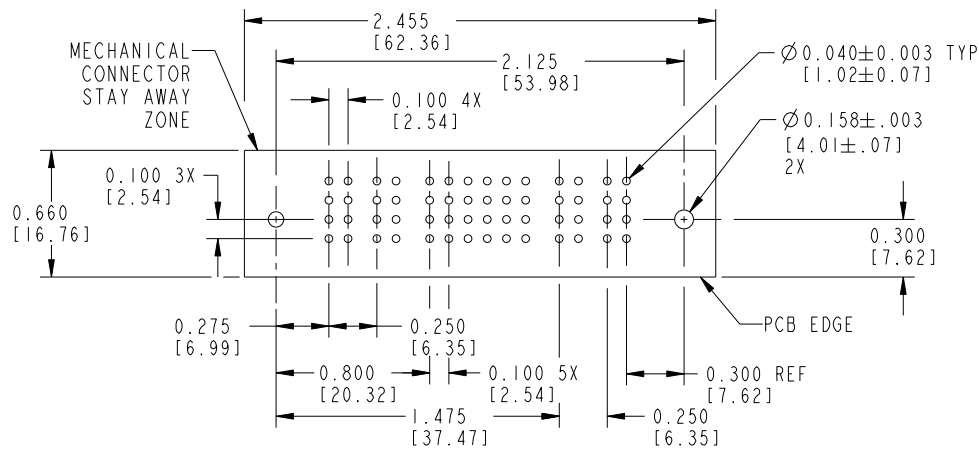
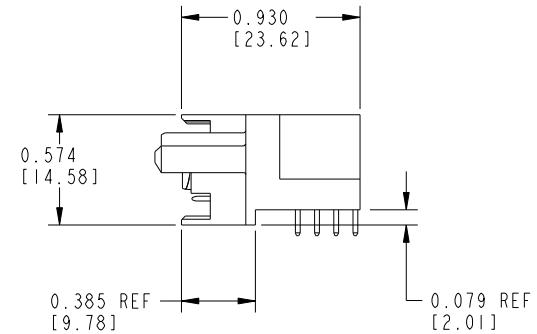
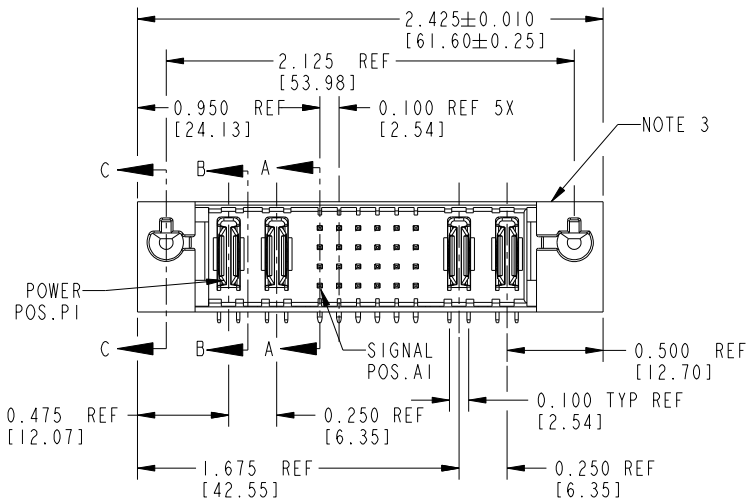


Tous droits strictement réservés. Reproduction ou communication a des tiers interdite sous quelque forme que ce soit sans autorisation écrite du propriétaire. Propriété de c FCI. Droits de reproduction FCI.



All rights strictly reserved. Reproduction or issue to third parties in any form whatever is not permitted without written authority from the proprietor. Property of FCI. Copyright FCI.

PRODUCT NUMBER
51534-XXYYY--
NOTE: (2)
SEE SHEET 3



RECOMMENDED PCB LAYOUT

mat'l code				NOTE 1		tolerances unless otherwise specified		CUSTOMER		FCI	
lfr	ecn no.	dr	date	linear	.XX±.01/.X±.3		COPY		www.fciconnect.com		
H	DG06-0011	CS	01/09/06		.XXX±.005/.XX±.13		projection		title		
J	DG08-0266	W D	09/21/08		.XXX±.0020/.X±.051				2P + 24S + 2P RIGHT ANGLE SOLDER HEADER		
				angles	0°±2°		INCH/MM		product family		code
				dr	D. WOLFORD 10/14/98		scale		PWRBLADE		213
				engr	J. BROWN 10/14/98		1:1		size		sheet
				chr	J. BROWN 10/14/98		A		51534		1 of 3
				appd	J. BROWN 10/14/98						
sheet index	revision sheet		J 1	J 2	J 3						

Pro/E

PDM: Rev:3

STATUS: Released

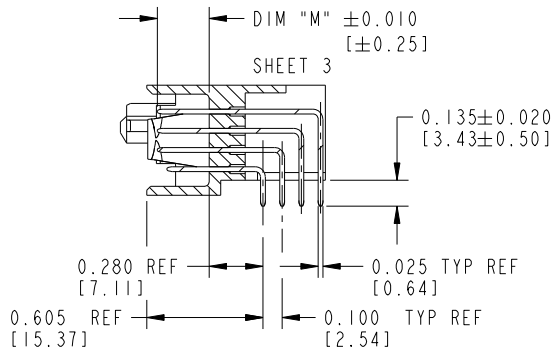
Printed: Dec 20, 2010

Tous droits strictement réservés. Reproduction ou communication a des tiers interdite sous quelque forme que ce soit sans autorisation écrite du propriétaire. Propriété de c FCI. Droits de reproduction FCI.

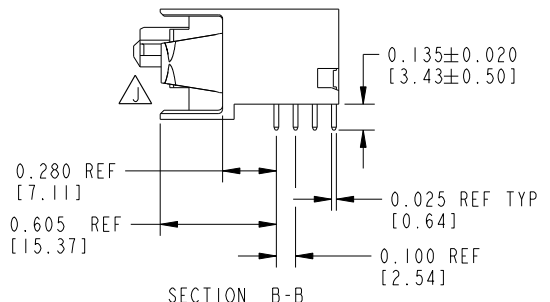
All rights strictly reserved. Reproduction or issue to third parties in any form whatever is not permitted without written authority from the proprietor. Property of FCI. Copyright FCI.



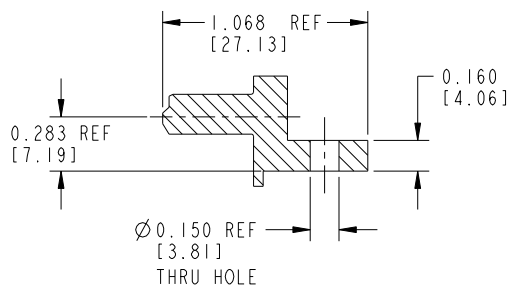
PRODUCT NUMBER
51534-XXYYY--
NOTE: (2)
SEE SHEET 3



SECTION A-A



SECTION B-B



SECTION C-C

mat'l code		NOTE 1		tolerances unless otherwise specified		CUSTOMER		FCI	
lfr	ecn no.	dr	date	linear	.XX±.01/.X±.3	COPY		www.fciconnect.com	
J				projection	.XXX±.005/.XX±.13	projection		title	
				angles	.XXX±.0020/.X±.051	INCH/MM		2P + 24S + 2P	
				dr	0°±2°	INCH/MM		RIGHT ANGLE SOLDER HEADER	
				enr	D. WOLFORD 10/14/98	scale		product family	
				chr	J. BROWN 10/14/98	1:1		PWRBLADE	
				appd	J. BROWN 10/14/98	A		code	
sheet index		revision sheet						size	
								dwg no	
								51534	
								sheet	
								2	

cage code 22526

Pro/E

PDM: Rev:3

STATUS: Released

Printed: Dec 20, 2010

Tous droits strictement réservés. Reproduction ou communication a des tiers interdite sous quelque forme que ce soit sans autorisation écrite du propriétaire. Propriété de c FCI. Droits de reproduction FCI.



All rights strictly reserved. Reproduction or issue to third parties in any form whatever is not permitted without written authority from the proprietor. Property of FCI. Copyright FCI.

1 | 2

3 |

4

PRODUCT No.	ROWS	POWER		SIGNAL						POWER		E2	
		E1	P1	P2	1	2	3	4	5	6	P3		P4
51534-XX001-- NOTE: ②	D C B A		PA	PA	UUUUUU	TTTTTT	SSSSSS	RRRRRR	UUUUUU	TTTTTT	SSSSSS	RRRRRR	

PRODUCT No.	ROWS	POWER		SIGNAL						POWER		E2	
		E1	P1	P2	1	2	3	4	5	6	P3		P4
51534-XX002-- NOTE: ②	D C B A		PA	PA	UUUUUU	TTTTTT	SSSSSS	RRRRRR	UUUUUU	TTTTTT	SSSSSS	RRRRRR	

PCB NOTES:

- ALL DIMENSIONS ARE BASIC UNLESS OTHERWISE SPECIFIED.
- ALL THROUGH HOLES ARE LOCATED WITH A TRUE POSITION OF 0.004[0.10]
- ALL HOLE DIAMETERS ARE FINISHED HOLE SIZE
- Ø0.158 [4.01] THROUGH HOLES ARE UNPLATED
- Ø0.0453±0.0010[1.151±0.025] DRILLED HOLES PLATED WITH 0.0003[0.008] MIN SnPb OVER 0.001[0.03] to 0.003[0.08] Cu PLATING TO ACHIEVE A 0.040±0.003[1.02±0.07] HOLE
- ▲SYMBOL WILL BE NEXT TO ANY DIMENSION, VIEW, OR NOTE WHICH HAS BEEN MODIFIED WITH THE CURRENT DRAWING REVISION.

CONNECTOR NOTES:

- HOUSING MATERIAL: UL94 V-0 GLASS FILLED HIGH TEMP. THERMOPLASTIC.
SIGNAL PIN MATERIAL: COPPER ALLOY.
POWER CONTACT MATERIAL: COPPER ALLOY.
- MANUFACTURER'S NAME, P/N, AND DATE CODE TO APPEAR ON THIS SURFACE.
- ▲3. SEE ITEM 1 & 2 IN PRINT 10064183 FOR PLATING SPEC OF 51534-XX00X AND 51534-XX00XLF RESPECTIVELY.
- PRODUCT SPECIFICATION GS-12-149.

ITEM NO.	DIM "M" ±0.010 [0.25]		CONTACT TYPE
E	0.220	[5.59]	SIGNAL
F	0.220	[5.59]	SIGNAL
R	0.270	[6.86]	SIGNAL
S	0.270	[6.86]	SIGNAL
T	0.270	[6.86]	SIGNAL
U	0.270	[6.86]	SIGNAL
PA	N/A	[N/A]	POWER

mat'l code		NOTE 1		tolerances unless otherwise specified		CUSTOMER		FCI	
ltr	ecn no.	dr	date	linear	.XX±.01/.X±.3	COPY		www.fciconnect.com	
J				angles	.XXX±.005/.XX±.13 .XXX±.0020/.X±.051 0°±2°	projection	title 2P + 24S + 2P RIGHT ANGLE SOLDER HEADER		
				dr	D. WOLFORD 10/14/98	INCH/MM		product family	PWRBLADE
				enrg	J. BROWN 10/14/98	scale		size	dwg no
				chr	J. BROWN 10/14/98	1:1		A	51534
				appd	J. BROWN 10/14/98			code	213
sheet index	revision sheet							sheet	3

1 | 2

Pro/E

PDM: Rev:3

STATUS: Released

Printed: Dec 20, 2010