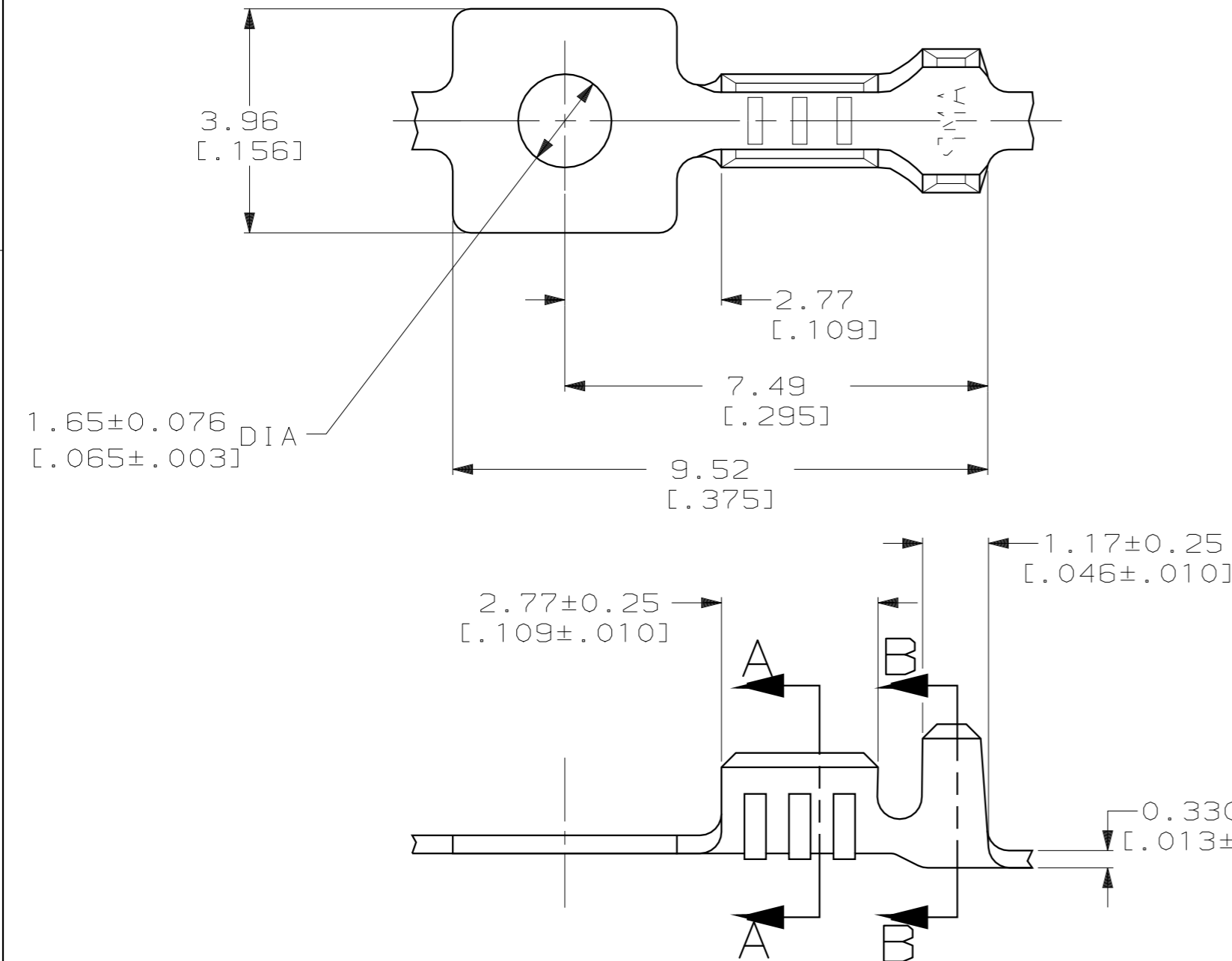
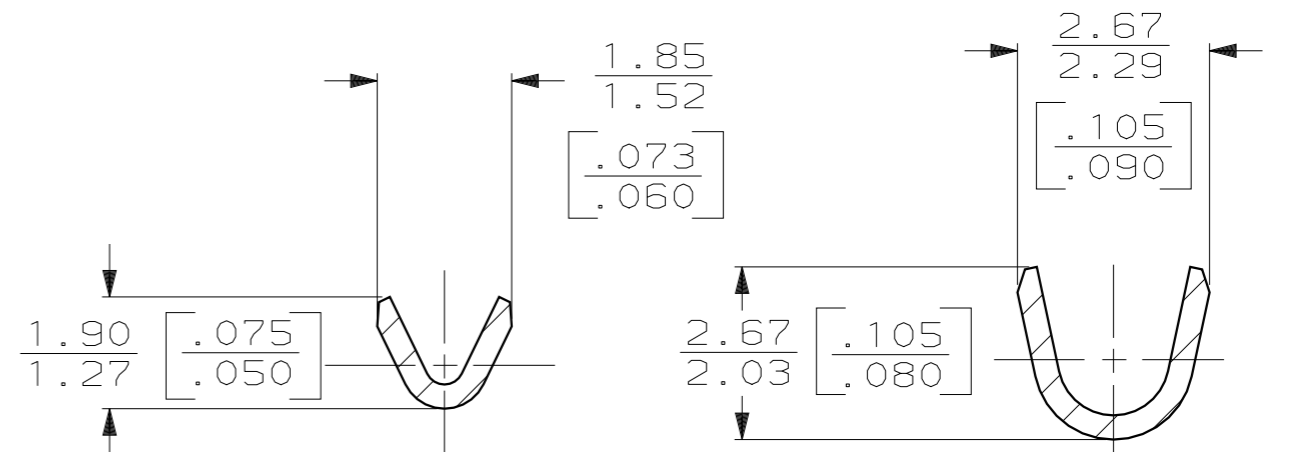


THIS DRAWING IS UNPUBLISHED. RELEASED FOR PUBLICATION, 19 .  
 © COPYRIGHT 19 BY AMP INCORPORATED. ALL INTERNATIONAL RIGHTS RESERVED.

LOC	DIST	P	F	ZONE	LTR	DESCRIPTION	DATE	APPD
AF	50				J	REDRAWN PER AF-6644	4/16/90	PF/JR



1 CONTINUOUS STRIP ON REELS



SECTION A-A  
SCALE 10:1

SECTION B-B  
SCALE 10:1

**METRIC**

0	2.29 [.090]	3.94 [.155]	F	1.40 [.055]	0.79 [.03] 0.76 [.030]	0.2mm <sup>2</sup> [24] 0.14mm <sup>2</sup> [26]	DO NOT SCALE PRINT. UNLESS SPECIFIED DIMENSIONS IN mm [INCHES] TOLERANCES ON: 2 PLC DEC ± - 3 PLC DEC ± 0.38 [.015] ANGLES ± -	DR 4/16/90 P FORTNEY CHK 4/16/90 JR RUTH APPD 4/16/90 G YETTER APPD 4/16/90 R KUZO	AMP INCORPORATED Harrisburg, Pa. 17105
TYPE	WIDTH	STRIP LENGTH ±0.38 [±.015]	TYPE	WIDTH	HEIGHT	WIRE	MATERIAL #2 HARD BRASS	PRODUCT SPEC -	NAME RING
INSUL BARREL CRIMP			WIRE BARREL CRIMP				FINISH -	APPLICATION SPEC -	SIZE <b>B</b>
								WEIGHT -	CAGE CODE 00779
									DRAWING NO 61652
									SCALE 10:1
									SHEET 1 OF 1

0.89-1.65 [.035-.065]	0.14mm <sup>2</sup> -0.2mm <sup>2</sup> [26-24] AWG	61652-1
INSULATION RANGE	WIRE SIZE	PART NO