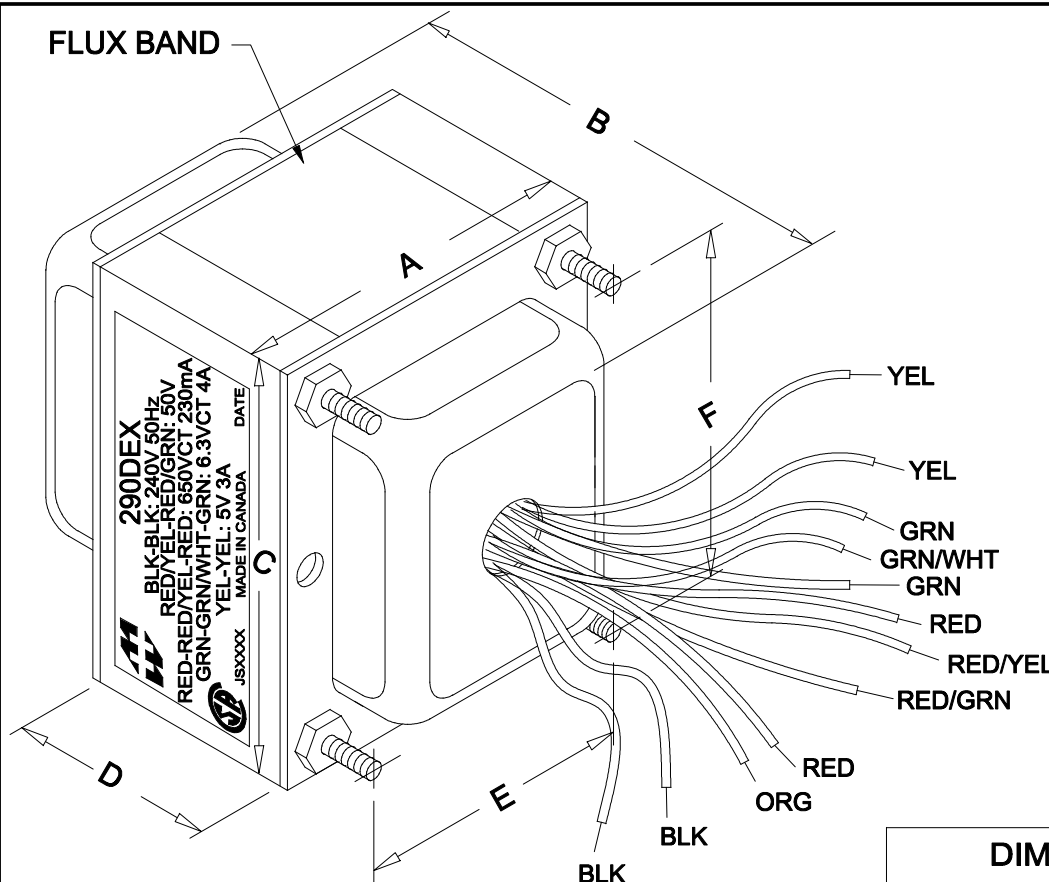
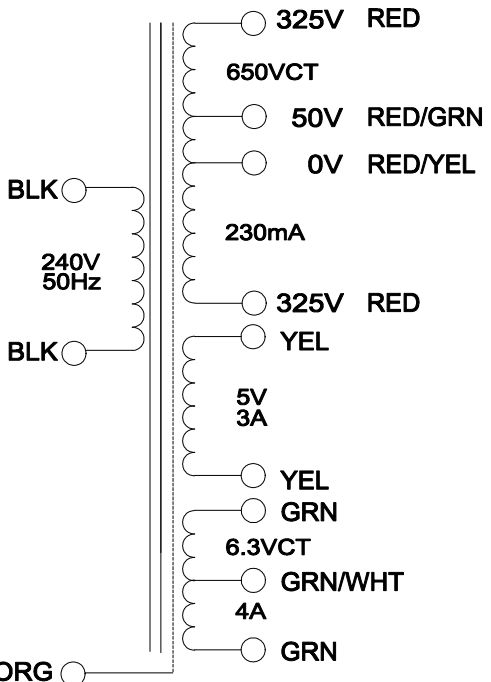


290DEX



290DEX
 BLK-BLK: 240V 50Hz
 RED-YEL-RED: 50V
 RED-RED/YEL-RED: 650VCT / 230mA
 GRN-GRN/WHT-GRN: 6.3VCT 4A
 YEL-YEL: 5V 3A
 MADE IN CANADA

NOTE: ALL LEADS 9" OUT MIN., STRIPPED .5"
 PRIMARY SECONDARY



DIMENSIONS:	
A	3.438" ±0.063
B	4.063" ±0.125
C	4.125" ±0.063
D	1.844" ±0.063
E	2.750" ±0.063
F	3.438" ±0.063

ELECTRICAL DATA:	
Turns ratio:	1 : 2.96 (RED - RED)
Exciting Current	@ 240V, 50Hz, BLK - BLK = 266mA Max.
DCR	@ 20C, BLK - BLK = 5.059 Ω ±20%
	@ 20C, RED - RED = 74.40 Ω ±20%
	@ 20C, YEL - YEL = 0.111 Ω ±20%
	@ 20C, GRN - GRN = 0.058 Ω ±20%
Pri. Voltage	240V 50Hz
Sec. Voltage (RMS)	650VCT @ 230mA C/W 50V TAP, 5V @ 3A / 6.3VCT @ 4A
No Load Voltage	712.29VCT / 5.30V / 6.75V

HAMMOND ELECTRONICS
 52 RANKIN PLACE,
 WATERLOO, ONTARIO, N2L 3Z5.
 PHONE (519) 886-8181
 FAX # (519) 886-9540

TITLE			
290DEX			
			DR BY IOAN POP
1	08/11/09	PRELIMINARY.	I.P. DATE 05/12/09
NO	DATE	REVISION	DIM IN(X)MM ()

290DEX