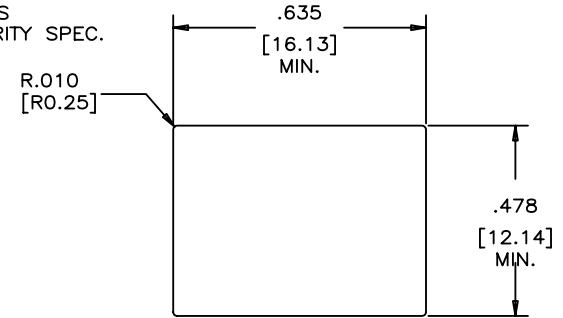
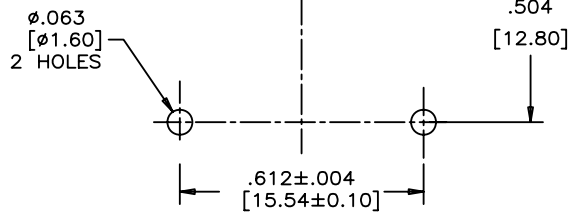
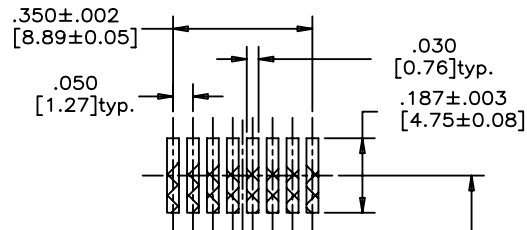
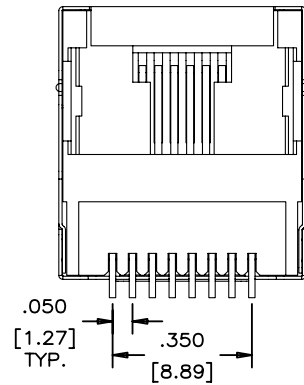


REVISIONS				
SYM	ZONE	DESCRIPTION	DATE	APPRD.
C		PROPOSAL	NOV.22/06	L.CHAN



RECOMMENDED PANEL CUTOUT



RECOMMENDED P.C.B. LAYOUT
(COMPONENT SIDE OF BOARD)



NOTES:

1. MATERIALS:

HOUSING: HIGH TEMPERATURE THERMOPLASTIC.
FLAMMABILITY RATING UL 94V-0
COLOUR: BLACK

CONTACTS: PHOSPHOR BRONZE

PLATING: GOLD PLATING (REFER TO PART NUMBER FOR THICKNESS)
ON MATING SURFACES.
50 μ" [1.27 MICRONS] MIN. NICKEL UNDERPLATE.
100 μ" [2.54 MICRONS] MIN. MATTE TIN ON
CONTACT TAILS.

SHIELD: COPPER ALLOY, NICKEL PLATED

2. COPLANARITY SPECIFICATION:

THE MAXIMUM GAP BETWEEN ALL TERMINAL TAILS IS .004 [0.10].

3. RECOMMENDED SOLDERING TEMPERATURE:

WAVE OR REFLOW SOLDERING AT 260°C MAXIMUM FOR 5 SEC MAXIMUM.

AMPHENOL PART NO.: RJLSE-4X381-01

- GOLD PLATING
- 0 - GOLD FLASH
 - 1 - 15 MICRO" GOLD
 - 2 - 30 MICRO" GOLD
 - 3 - 50 MICRO" GOLD

DRAWN	Chigow	DATE	SEP15,06
DESIGNED			
CHECKED	LCHAN	DATE	SEP15,06
I. E. APPRD.			
Q. A. APPRD.			
DWG. APPRD.			
ENG. REL. NO.			
REF.			
DIMENSIONS ARE IN		CODE ID. NO.	
INCHES [mm]		03554	

Amphenol Canada Corp.

TITLE SURFACE MOUNT MODULAR JACK
8 POSITION, 8 CONTACTS, WITH SHIELDED,
TRAY PACKAGE- RoHS COMPLIANT

DWG	DRAWING NO.	REV.
	P-RJLSE-4X381-01	C
SCALE	WT.	SURF.
		SHEET 1 OF 1

THIS DOCUMENT CONTAINS PROPRIETARY INFORMATION AND SUCH INFORMATION
MAY NOT BE DISCLOSED TO OTHERS FOR ANY PURPOSE OR USED FOR MANUFACTURING
PURPOSES WITHOUT WRITTEN PERMISSION FROM AMPHENOL CANADA CORP.