

Table with 5 columns: PART NUMBER, REVISION, DESCRIPTION, FEED TYPE, CONVERT TO. Includes an image of the Atlantic Version Terminator Interface Adapter.

Table with 10 columns: CONVERT TO, PART NUMBERS REQUIRED. Lists various part numbers and quantities for different feed types.

Table with 3 columns: CRIMP, SIZE, TYPE. Lists crimp sizes and types for wire and insulation.

Table with 2 columns: PART NUMBER, INSULATION DIAMETER RANGE. Lists conversion kits for different wire sizes.

Terminal Data: Deutsch Terminal Deutsch Crimp Specification. Includes wire strip length and insulation diameter range.

Terminal Data: Deutsch Terminal Deutsch Crimp Specification. Includes wire strip length and insulation diameter range for socket size 12.

Table with 3 columns: WIRE SIZE, CRIMP HEIGHT mm [INCH], CRIMP HEIGHT REFERENCE SETTING. Lists crimp heights for different wire sizes.

- 1 RECOMMENDED SPARE PARTS
2 GREASE BEARING SURFACES LIGHTLY
3. LUBRICATE DAILY PER THE APPLICATOR INSTRUCTION SHEET SUPPLIED WITH THE APPLICATOR.
4 APPLICATOR SPECIFIC DATA TO BE ENTERED INTO BLANK MEMORY CHIP AT ASSEMBLY...

*WARNING
ON INSTALLATION, SET WIRE DISC, ITEM 40 TO LARGEST WIRE SIZE SETTING. USE OF SETTINGS BELOW MINIMUM REQUIRED CRIMP HEIGHT SETTING WILL CAUSE DAMAGE TO CRIMP TOOLING.

Table with 4 columns: PART NO, DESCRIPTION, ITEM NO. Lists various parts like depressor, shim pack, O-ring, push rod, bushing.

ATLANTIC VERSION
Shown on sheets 1 of 4 & 2 of 4
(Pacific version shown on sheets 3 of 4 & 4 of 4)

Table with 5 columns: P, LTM, DESCRIPTION, DATE, DWN, APVD. Lists revisions and part numbers.

Large table with 10 columns: P, LTM, DESCRIPTION, DATE, DWN, APVD. Lists various parts and their specifications.

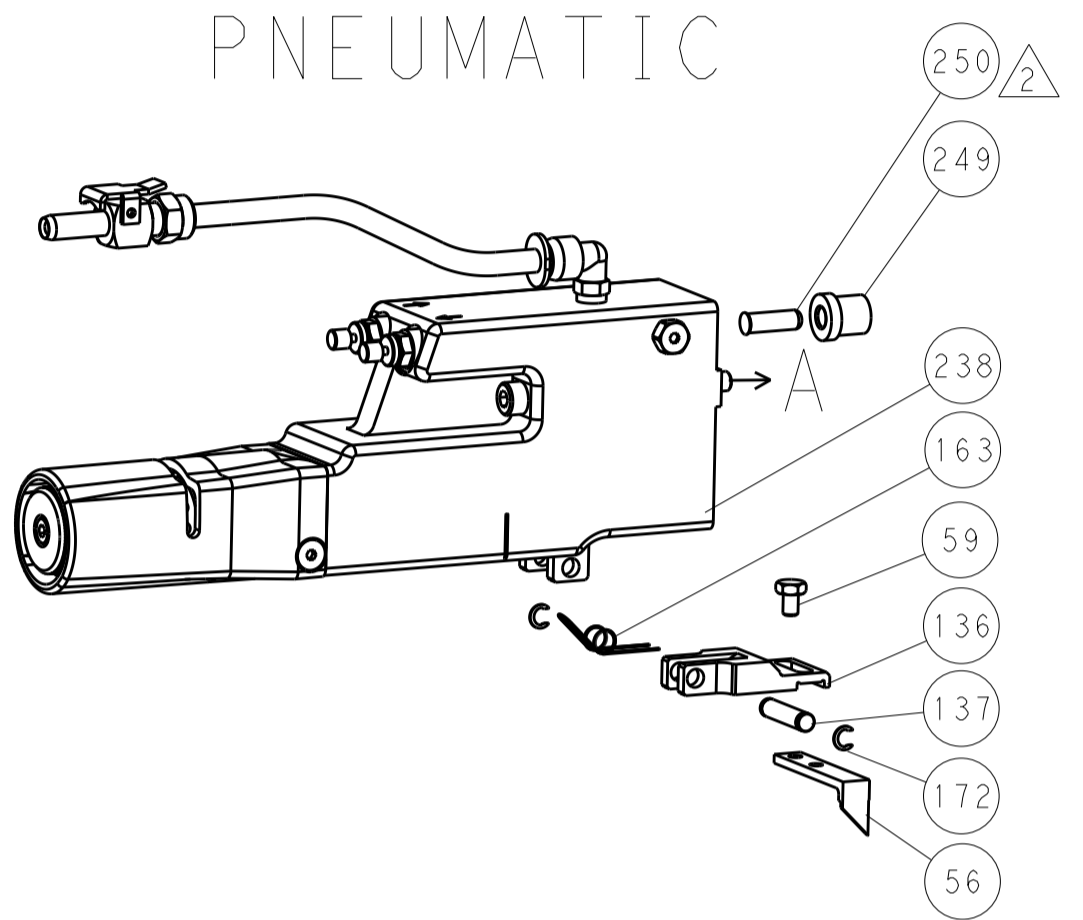
Product information section including dimensions, tolerances, material, finish, weight, and customer accessible production drawing details.

LOC		DIST		REVISIONS			
A	66	P	LTM	DESCRIPTION	DATE	OWN	APVD
		-	-	SEE SHEET 1	-	-	-

FEED TYPE MECHANICAL



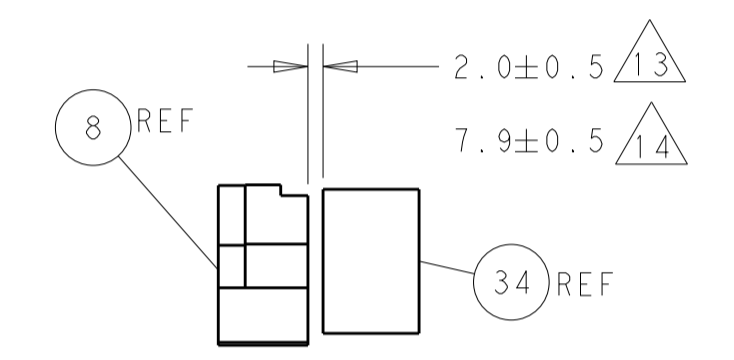
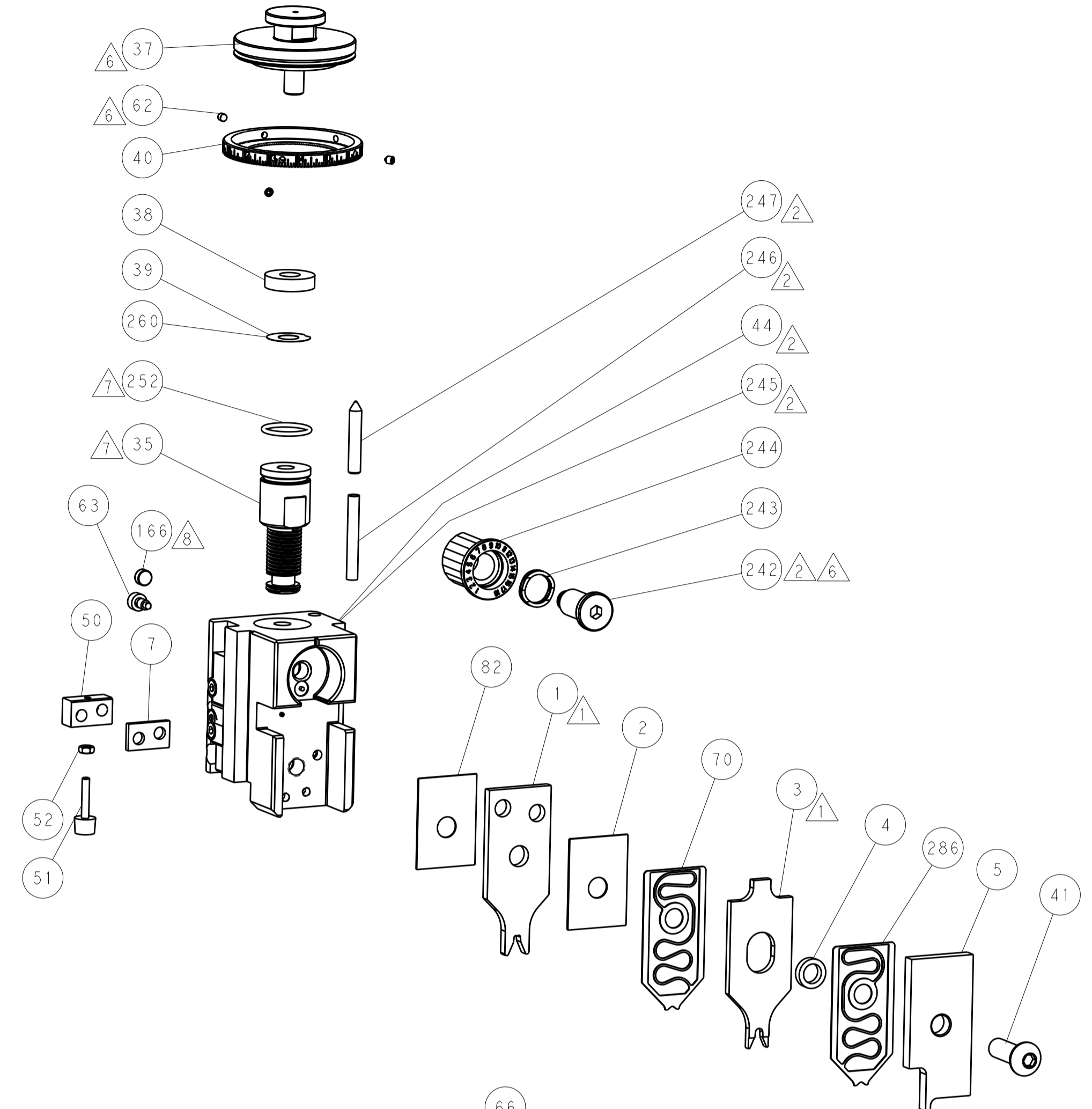
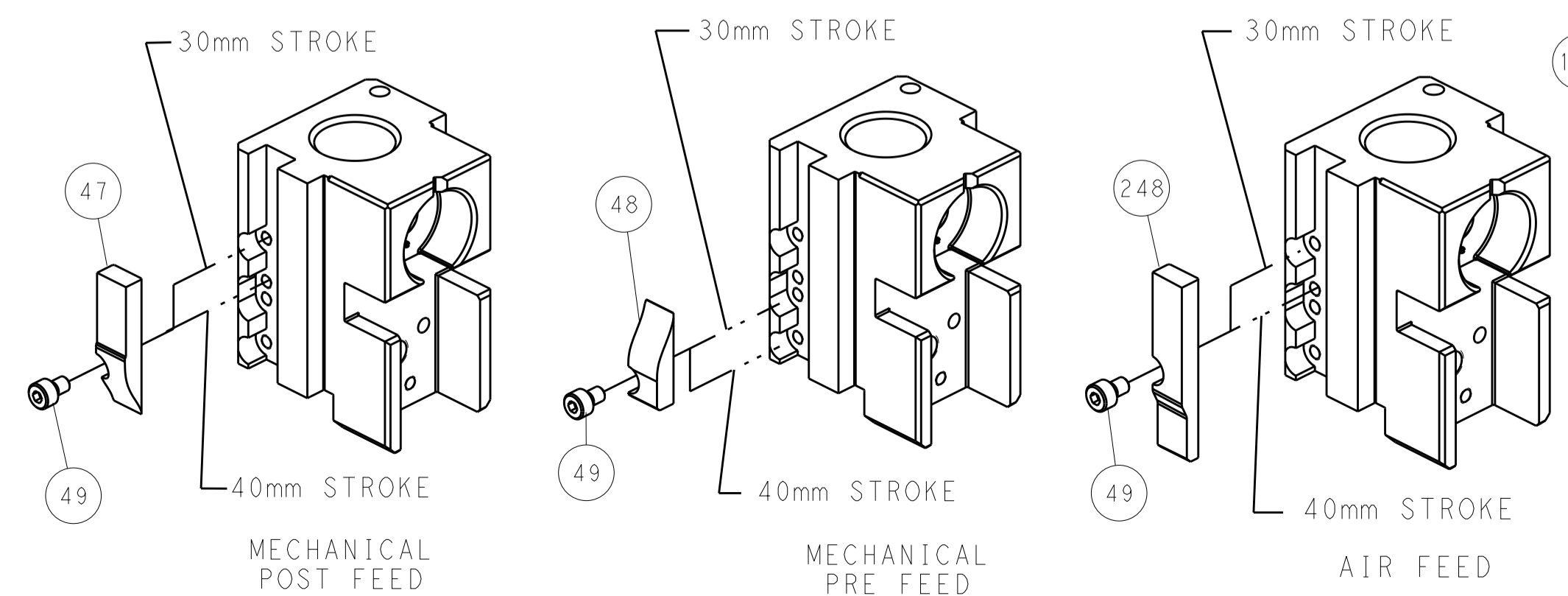
PNEUMATIC



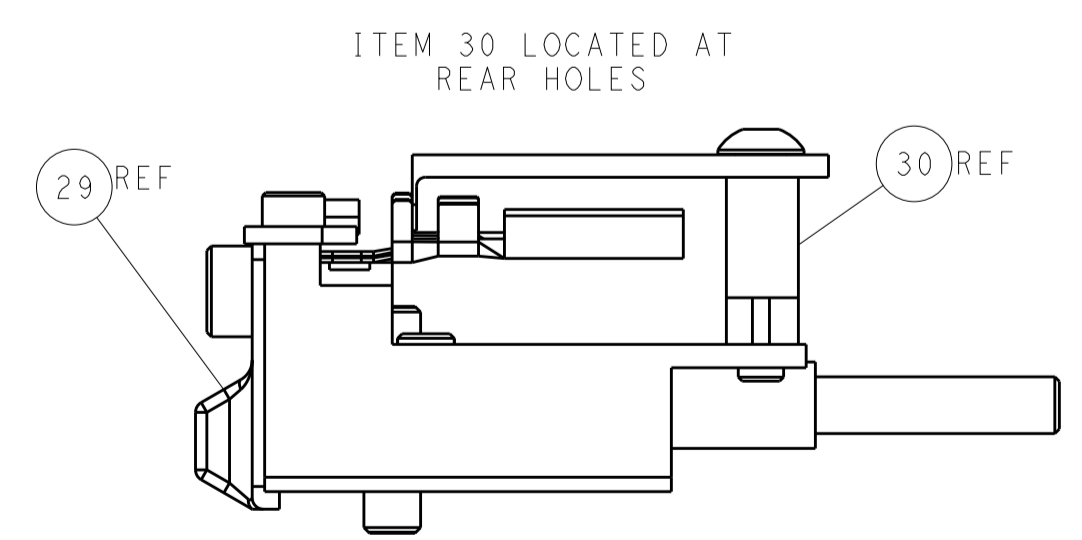
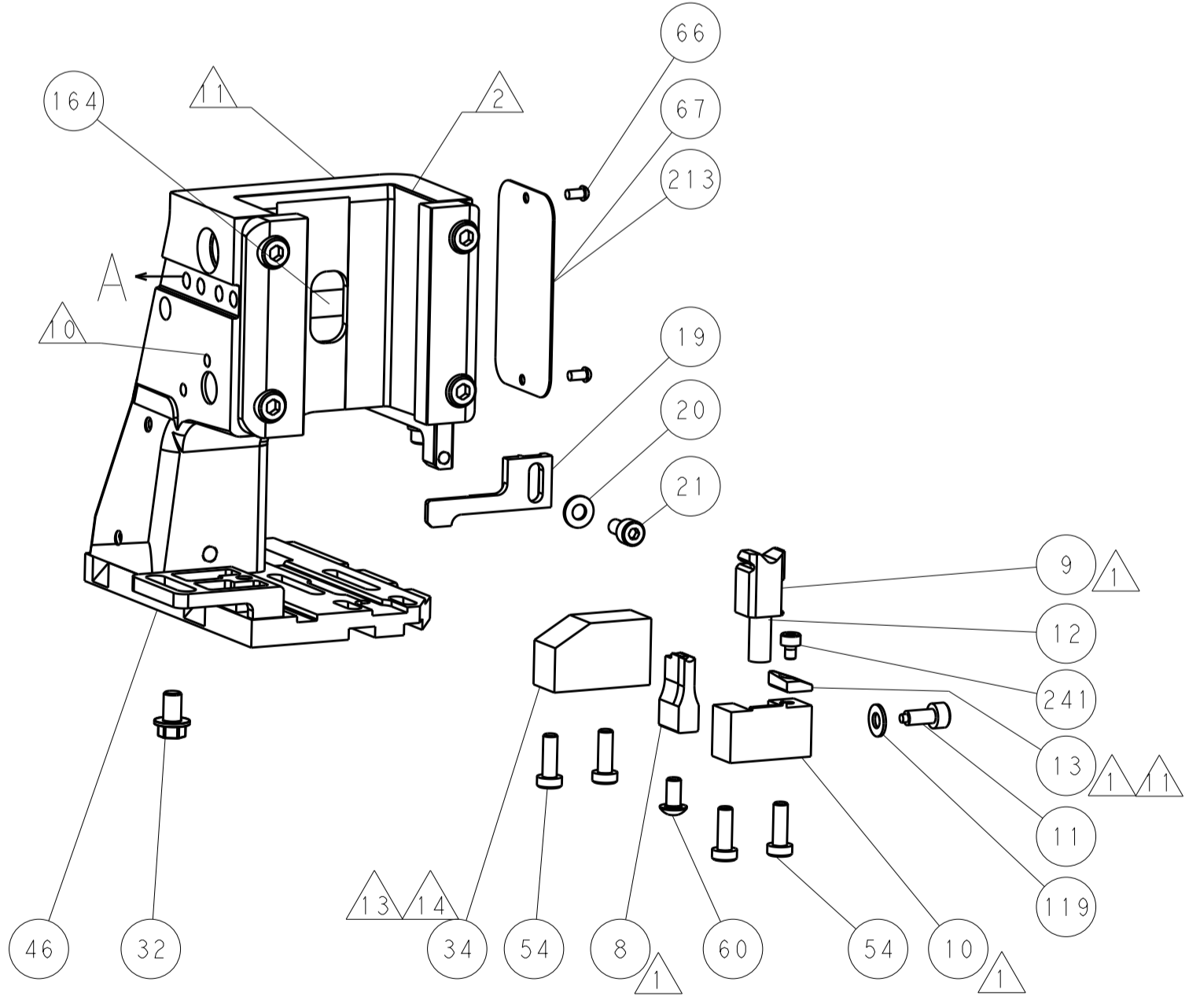
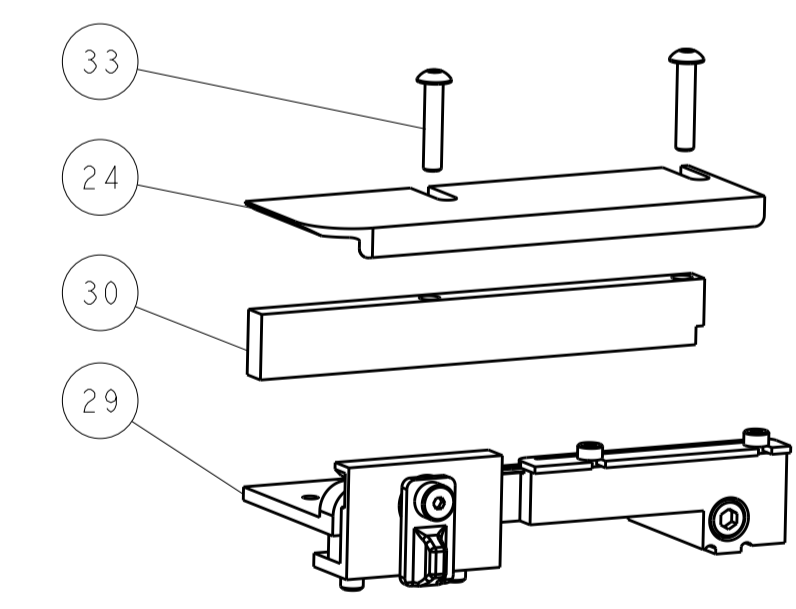
SERVO LATCH PLATE



CAM POSITIONS



TERMINAL SUPPORT LOCATION



ITEM 30 LOCATED AT REAR HOLES

FEED TRACK POSITION GUIDE BY INSULATION BARREL

ATLANTIC VERSION
 Shown on sheets 1 of 4 & 2 of 4
 (Pacific version shown on sheets 3 of 4 & 4 of 4)

DIMENSIONS:		TOLERANCES UNLESS OTHERWISE SPECIFIED:		DWG: R. KNEPPER 22-Oct-13		TE Connectivity	
mm	0 PLC ±	1 PLC ±	2 PLC ±	3 PLC ±	4 PLC ±	5 PLC ±	Harrisburg, PA 17105-3608
MATERIAL:		FINISH:		CHK: G. BAILEY 22-Oct-13		NAME: Ocean Side Feed Applicator	
				APVD: M. CLIFFORD 22-Oct-13		PRODUCT SPEC:	
				APPLICATION SPEC:		SIZE: CAGE CODE: DRAWING NO:	
				WEIGHT:		RESTRICTED TO:	
				Customer Accessible Production Drawing		SCALE: 1:2 SHEET 2 OF 4 REV: C1	

LOC		DIST		REVISIONS			
A	66	P	LTM	DESCRIPTION	DATE	OWN	APVD
		-		SEE SHEET 1			

FEED TYPE MECHANICAL



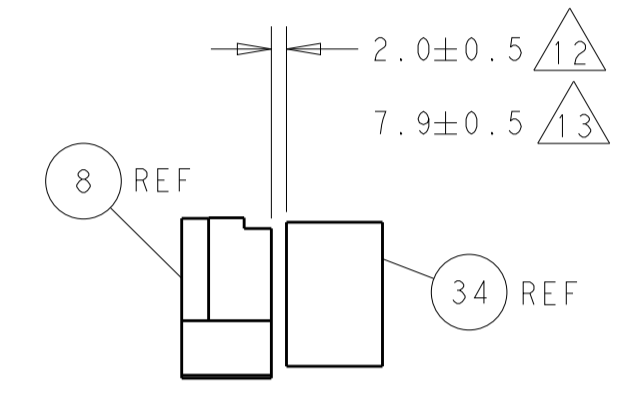
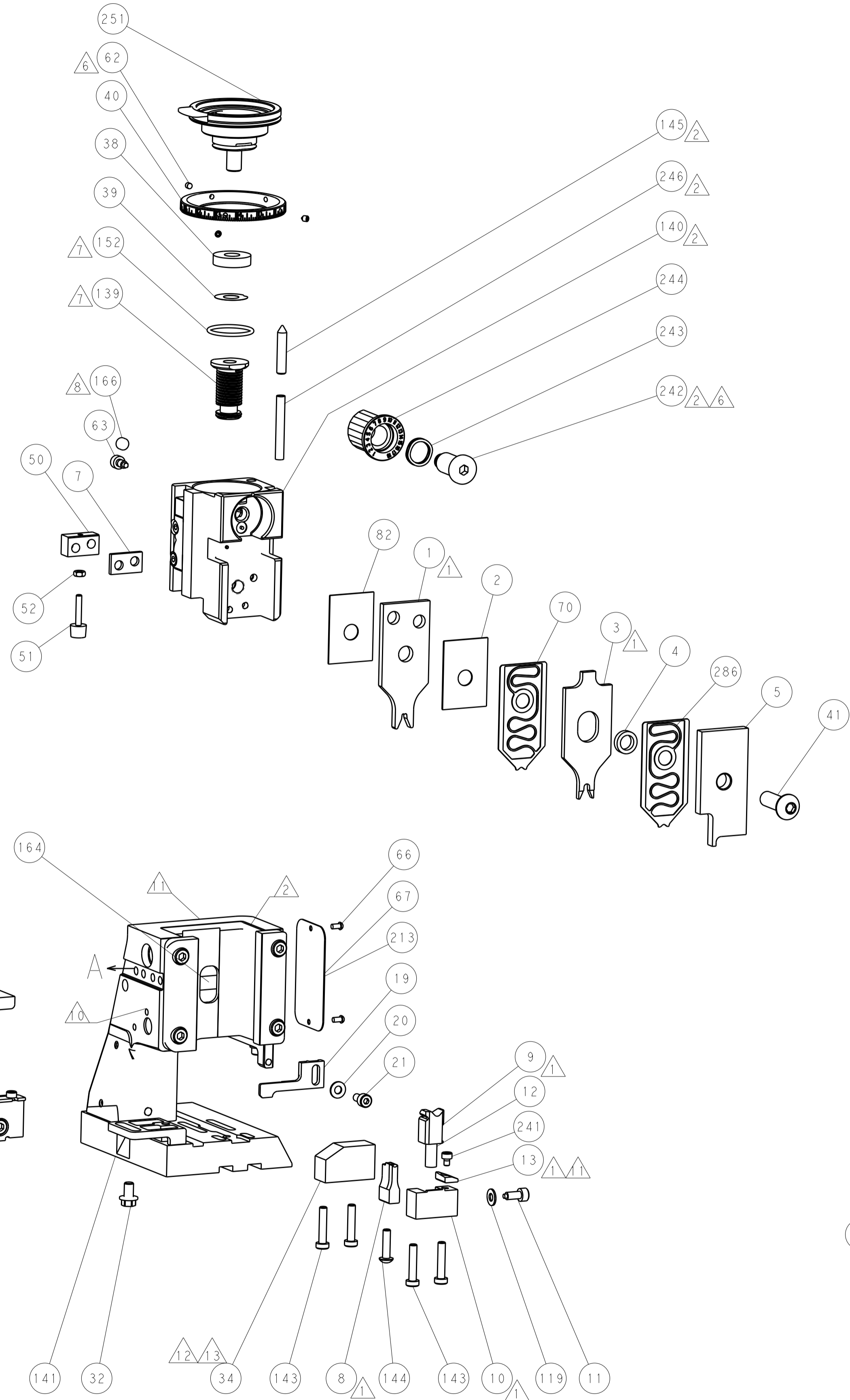
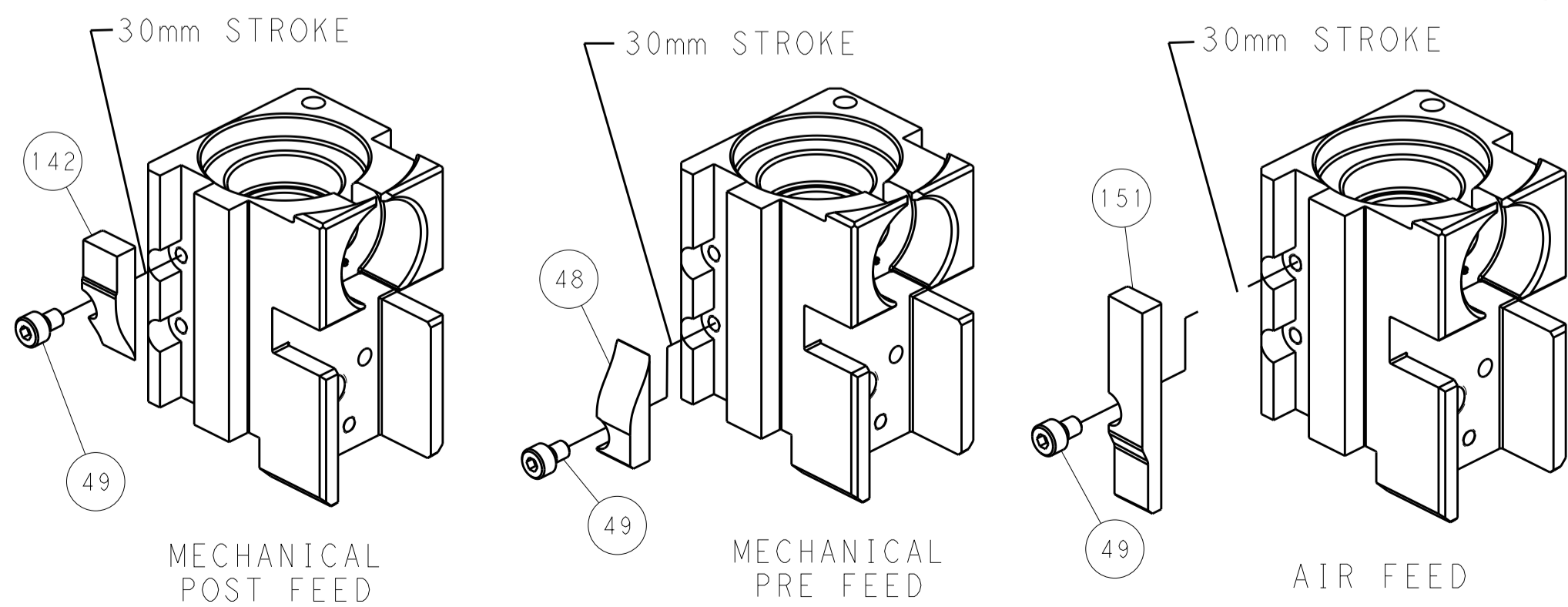
PNEUMATIC



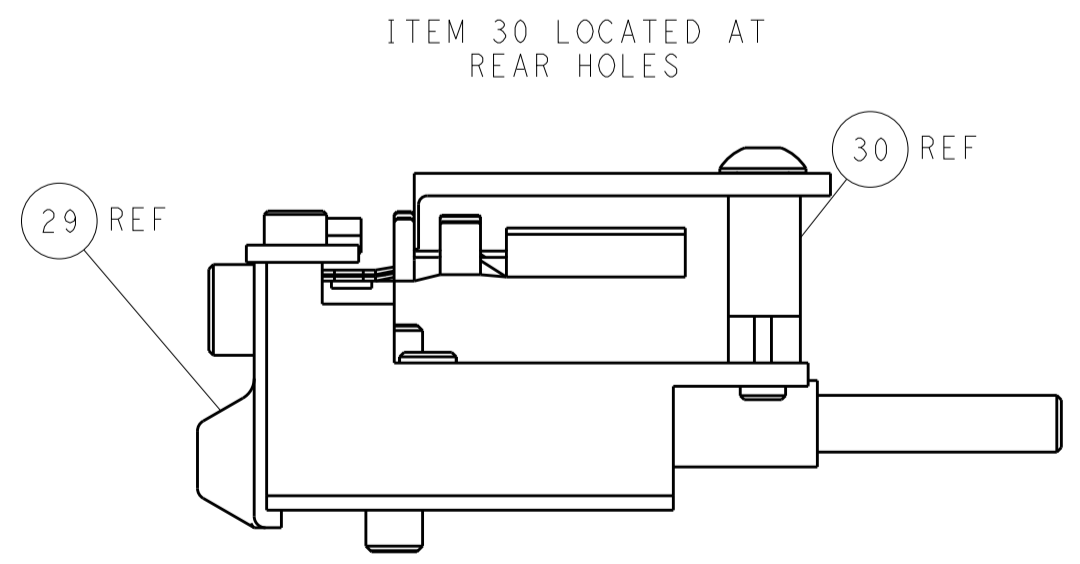
SERVO LATCH PLATE



CAM POSITIONS



TERMINAL SUPPORT LOCATION



FEED TRACK POSITION GUIDE BY INSULATION BARREL

PACIFIC VERSION
 Shown on sheets 3 of 4 & 4 of 4
 (Atlantic version shown on sheets 1 of 4 & 2 of 4)

DIMENSIONS:		TOLERANCES UNLESS OTHERWISE SPECIFIED:		DWN R. KNEPPER 22-Oct-13 CHK G. BAILEY 22-Oct-13 APVD M. CLIFFORD 22-Oct-13 NAME: Ocean Side Feed Applicator SIZE: CAGE CODE: DRAWING NO: A1 00779 ©=2266125 RESTRICTED TO:	
mm	0 PLC ±	1 PLC ±	2 PLC ±	3 PLC ±	4 PLC ±
	ANGLES ±	FINISH			
MATERIAL		WEIGHT	SCALE: 1:2	SHEET 4 OF 4	REV C1