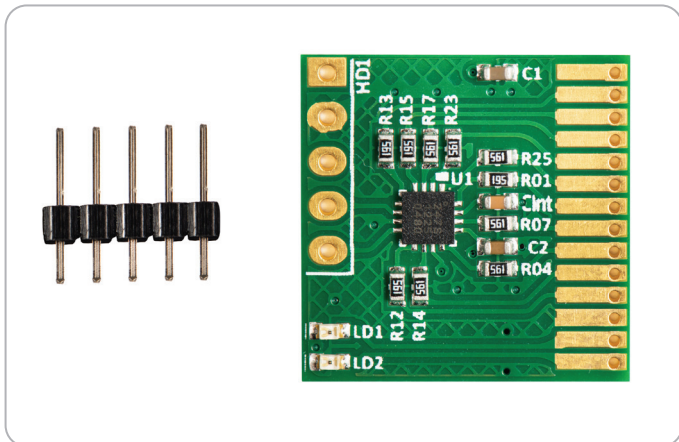


AEK-CY8C20xx7

KIT CONTENTS



- 5-pin Connector
- AEK-CY8C20xx7 Starter Kit

PREREQUISITES

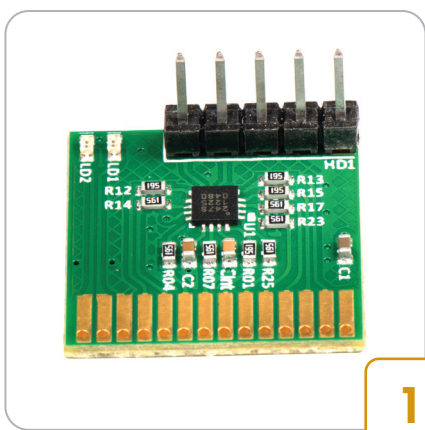


- MiniProg3 Programmer
- Connecting Wires
- Copper Tape
- USB A to Mini-B Cable
- Soldering Iron

DOWNLOAD THE SOFTWARE

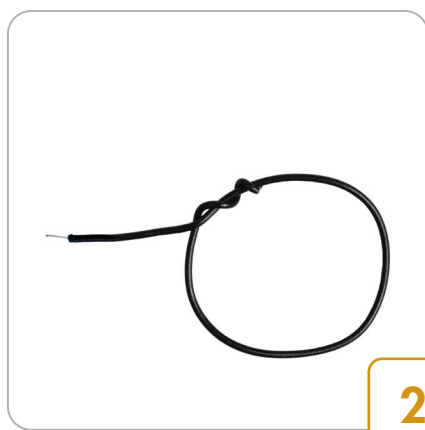
- Download the latest revision of PSoC® Designer™ <http://www.cypress.com/go/psocdesigner>
- Download the example projects from http://artaflexmodules.com/quietzonefiles/Example_Projects.zip

STARTER KIT SETUP



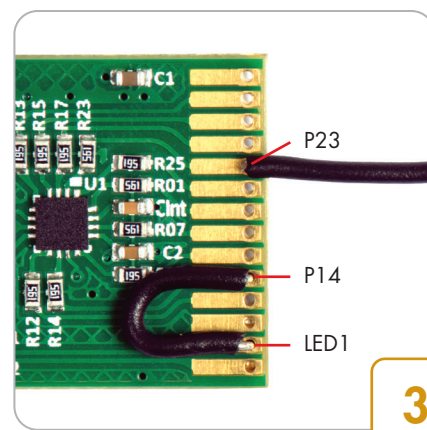
1

- Solder the 5-pin connector directly to the HD1 header* of the starter kit.



2

- Coil the connecting wire around to form a wire loop of ~3 cm in diameter.



3

- Solder the wire loop to the pin labeled P23 on the 14-pin edge connector*. Use another connecting wire to solder together the pins labeled LED1 and P14.

Note*: The pins on the 14-pin edge connector and HD1 header are labeled on the back side of the kit.

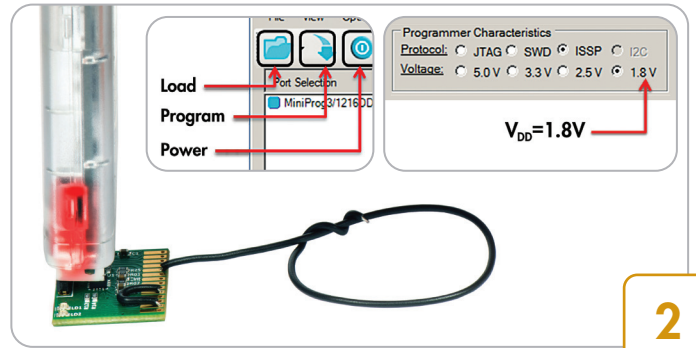
AEK-CY8C20xx7

STARTER KIT PROGRAMMING AND OPERATION



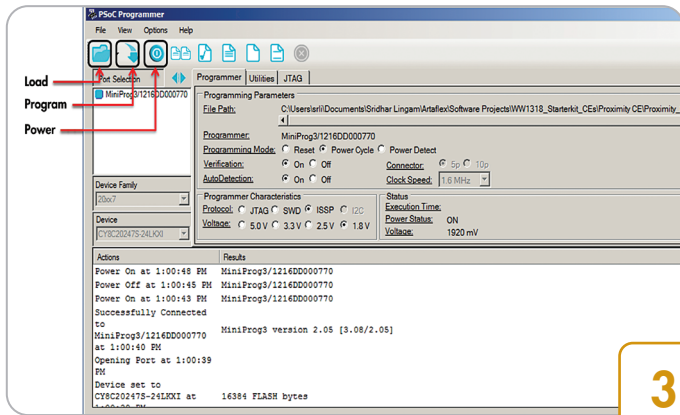
1

- Connect the USB port in your PC to the AEK-CY8C20xx7 ISSP connector using the MiniProg3 and USB A to Mini-B cable.



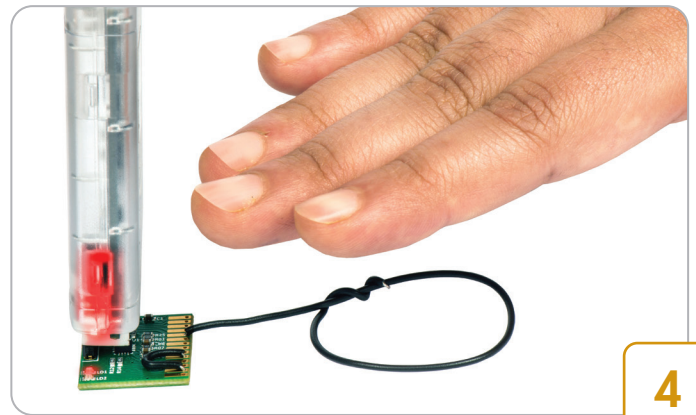
2

- Set Voltage to 1.8 V and click on Power button in PSoC Programmer™ to power the starter kit.



3

- Using the PSoC Programmer software, program the CY8C20247S-24LXI with the hex file for proximity sensor project located at CY8C20xx7\Proximity_with_CY8C20xx7\Proximity_with_CY8C20xx7.hex
- Reset the starter kit by toggling power button in PSoC Programmer.



4

- Move your hand towards the loop. Once the hand is within the proximity detection range, the LED will turn on. This code example enables a proximity detection distance of approximately 3 cm.
- Please ensure that the wire loop is on the same plane as the starter kit to achieve the maximum detection distance.

ADDITIONAL LEARNING RESOURCES

Visit <http://www.cypress.com> for additional learning resources including datasheet, design guides, technical reference manual and application note.

- Datasheet <http://www.cypress.com/?rID=59671>
- Design Guide <http://www.cypress.com/?rID=63035>
- Getting Started with CapSense Design Guide <http://www.cypress.com/?rID=48787>
- Technical Reference Manual <http://www.cypress.com/?rID=59964>
- Application Note <http://www.cypress.com/?rID=42958>

For the latest information about this kit, visit our website: www.artaflexmodules.com/quietzone