

INTRODUCTIONS

1. Specially designed with 2-stage inductor providing excellent EMI suppression at frequency 150KHz ~ 10MHz.
2. With optional Y capacitance from 100pF to 3300pF.
3. All part numbers are UL and cUL recognized, ENEC approved.

COMPONENTS

PART No.	L(mH)	Cx(uF)	Cy(pF)	R(MΩ)
03SEEG3S	3.7	0.22	2200	1.0
06SEEG3S	1.5			
10SEEG3S	0.38			
13SEEG3S	0.19			
15SEEG3S	0.12			

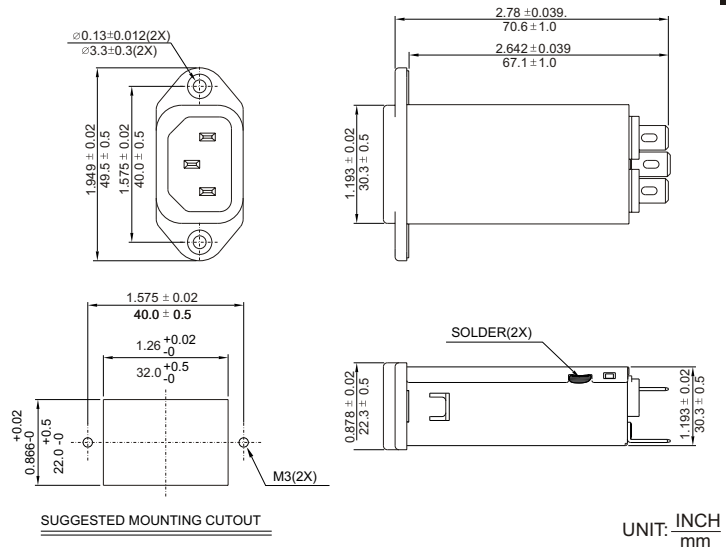
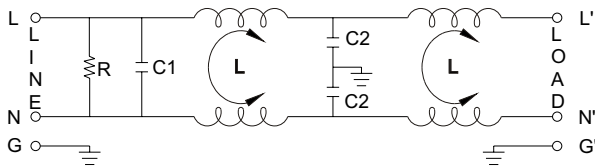
MINIMUM INSERTION LOSS IN dB

COMMON MODE (L-G) IN 50 OHM SYSTEM						
PART NO.	FREQUENCY-MHz					
	.15	.50	1.0	5.0	10	30
03SEEG3S	30	45	55	55	45	40
06SEEG3S	20	40	45	50	50	40
10SEEG3S	3	20	30	40	40	40
13SEEG3S	1	10	20	40	40	40
15SEEG3S	1	8	15	30	30	35

DIFFERENTIAL MODE (L-L) IN 50 OHM SYSTEM						
PART NO.	.15	.50	1.0	5.0	10	30
03SEEG3S	10	18	20	25	30	35
06SEEG3S	10	18	20	25	30	35
10SEEG3S	10	18	20	25	30	35
13SEEG3S	10	18	20	25	30	35
15SEEG3S	10	18	20	25	30	35

SPECIFICATIONS

1. Maximum leakage current each line-to-ground @ 115VAC 60Hz: 0.20mA @ 250VAC 50Hz: 0.40mA
2. Hipot rating (one minute) line-to-ground: 2250VDC line-to-line: 1450VDC
3. Operating frequency: 50/60Hz
4. Rated voltage: 115/250VAC


ELECTRICAL SCHEMATIC

MECHANICAL CONSTRUCTION


SEEG3S