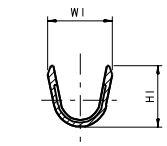
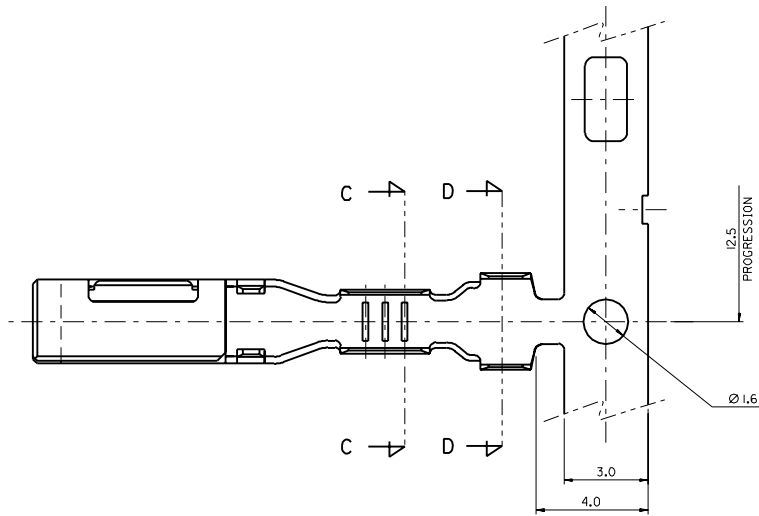
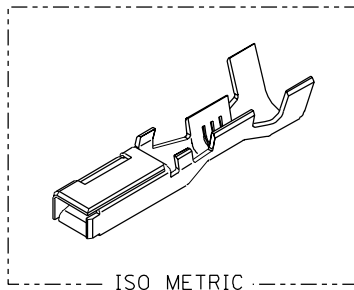
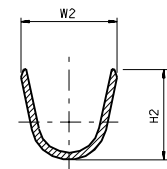
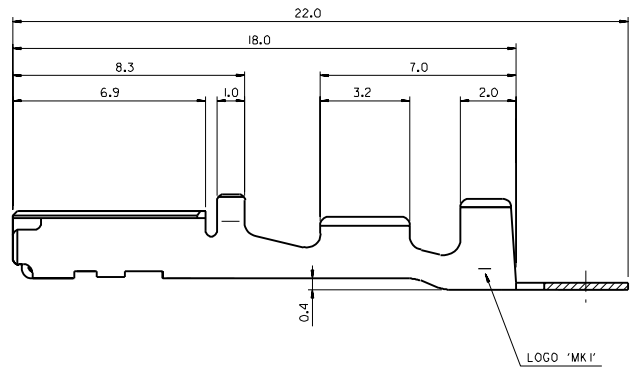


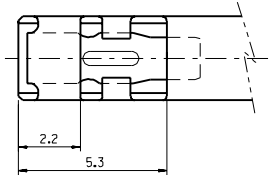
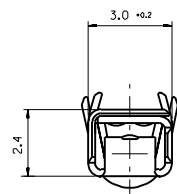
DWG. NO. SD-35407-002  
 SIMILAR ITEM  
 PROJECT NO.  
 F  
 D  
 C  
 B  
 DO NOT SCALE DRAWING DIMENSION IN METRIC



SECTION: C-C



SECTION: D-D



**NOTE**

1. MATERIAL: COPPER ALLOY,  $\pm 0.25$ .
2. FINISH: PRE-TIN PLATE.
3. RECOMMENDED LENGTH OF WIRE STRIP: 5.0-5.6.
4. INSERTION-EXTRACTION FORCE WITH TAB TERMINAL P/N 35420.  
 INSERTION FORCE :  $0.30 \pm 1.0$  Kgf.  
 AFTER SIX TIMES OF INSERTION & EXTRACTION FORCE :  $0.15 \pm 1.0$  Kgf.

NO.	ENG-NO.	TYPE	PART NAME	CABLE SIZE (mm <sup>2</sup> )	DEMENSION			
					W1	H1	W2	H2
1	35407-6102	(S)	.090 FEMALE TER'L	AVSS(AVS) 0.3 - 0.5	2.5	2.4	3.4	3.5
2	35407-6202	(L)	.090 FEMALE TER'L	AVSS(AVS) 2.0	3.6	3.5	4.0	4.0
3	35407-6502	(M)	.090 FEMALE TER'L	AVSS(AVS) 0.85 - 1.25	2.6	3.0	4.0	4.0

CHANGED TENSION SPEC. EC NO. KPR2002-0090 DRWNS:MKJM 02/07/08 CHK'Y:SKJIM 02/07/08 APPR:W.LEE	QUALITY SYMBOLS MAJOR CRITICAL	GENERAL TOLERANCES: (UNLESS SPECIFIED)	SCALE 8:1	DESIGN UNITS mm <input checked="" type="checkbox"/> INCH <input type="checkbox"/>	DIMENSIONS: mm <input type="checkbox"/> INCH <input type="checkbox"/> mm <input checked="" type="checkbox"/> INCH <input type="checkbox"/>	SHT	REV
		4 PLACES $\pm 0.1$	3 PLACES $\pm 0.1$	2 PLACES $\pm 0.1$	1 PLACE $\pm 0.25$	THIRD ANGLE PROJECTION	REVISE ON CAD ONLY
DESCRIPTION		DRAWN BY & DATE B.C.YOON '98.4.10		CHECKED BY & DATE B.K.CHOI '98.4.10		TITLE: .090 FEMALE TER'L (FT TYPE)	
REV		APPROVED BY & DATE C.W.LEE '98.4.10		MOLEX INCORPORATED		SHEET NO. 1 OF 1	
C		CAD FILENAME SD35407.DGN		MATERIAL NO. 354076102		DRAWING NO. SD-35407-002	
DRAFT WHERE APPLICABLE MUST REMAIN WITHIN DIMENSIONS		THIS DRAWING CONTAINS INFORMATION THAT IS PROPRIETARY TO MOLEX INCORPORATED AND SHOULD NOT BE USED WITHOUT WRITTEN PERMISSION.		SIZE C		MX-A2	