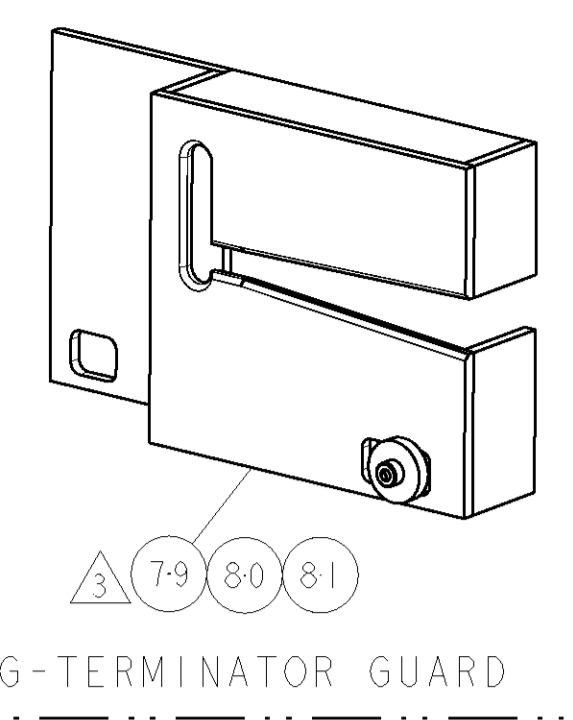


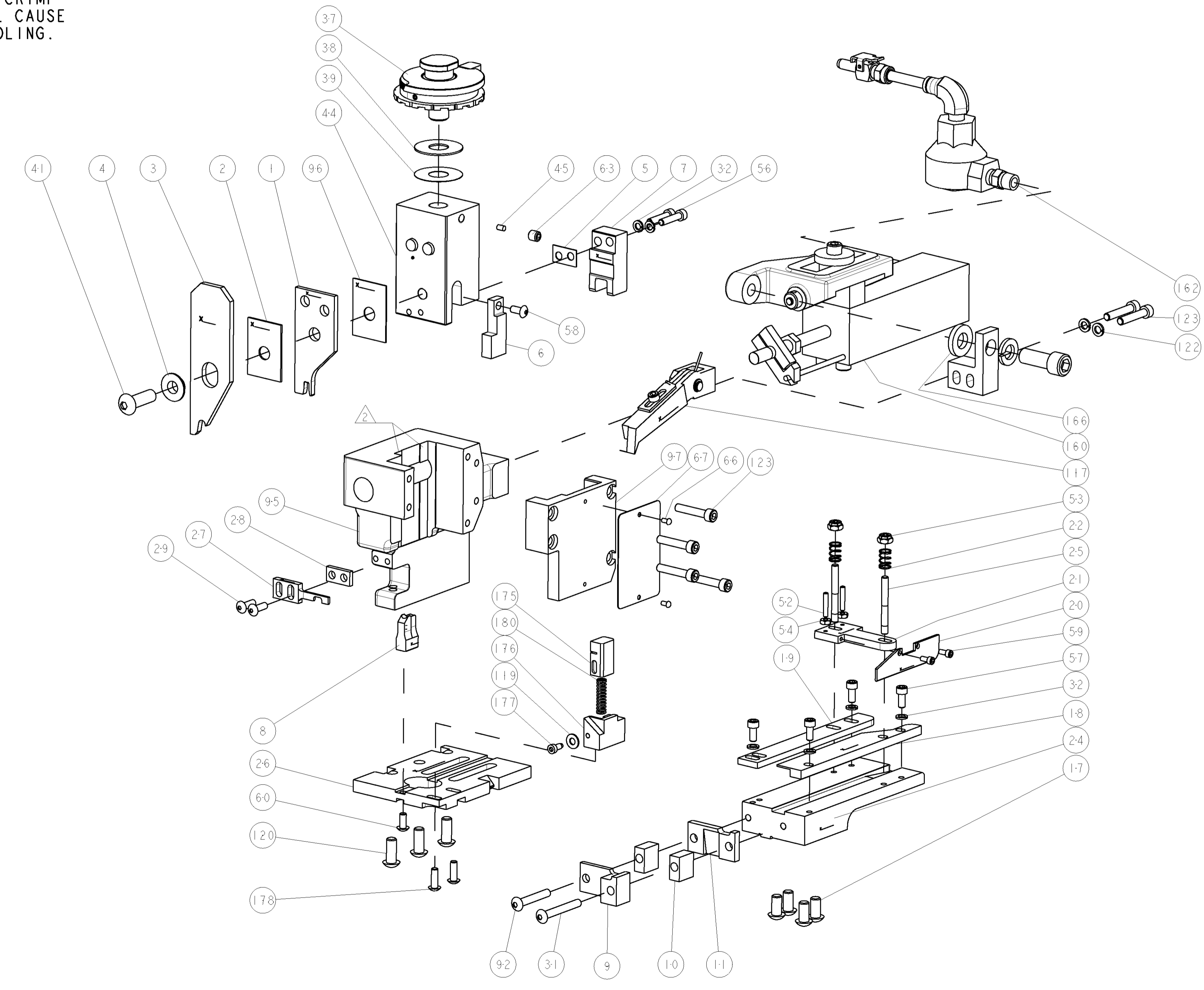
THIS DRAWING IS UNPUBLISHED.		RELEASED FOR PUBLICATION		
COPYRIGHT 20 BY TYCO ELECTRONICS CORPORATION. ALL RIGHTS RESERVED.				
PART NUMBER	REV	FIRST USED	POWER UNIT	FEED TYPE
1855542-1	A	354500-1	BENCH MODEL G	AIR FEED
7-1855542-7	A	-	SPARE PARTS	-

- 1 RECOMMENDED SPARE PARTS
 - 2 GREASE LIGHTLY
 - 3 GUARD MUST BE IN PLACE WHEN OPERATING APPLICATOR IN THE G TERMINATING UNIT.
4. THIS APPLICATOR IS DESIGNED TO RUN ON THE G TERMINATOR UNIT ONLY.
5. TERMINAL LUBRICANT IS REQUIRED.

***WARNING:**
ON INSTALLATION, SET WIRE DISC TO LARGEST WIRE SIZE SETTING. USE OF SETTINGS BELOW MIN REQUIRED CRIMP HEIGHT SETTING WILL CAUSE DAMAGE TO CRIMP TOOLING.



TERMINAL NAME: RECEPTACLE 9.5X1.2					
TE PN	LEAR PN	G&H (LEAR) TERMINAL - TE CRIMP SPECS			
2113019	26436, 212, 011				
		CRIMP HEIGHT	WIRE SIZE	REF SETTING*	
-	-	2.69±0.05mm [.106±.002]	4mm2	B1	
-	-	2.59±0.05mm [.102±.002]	3.5mm2	C0	
-	-	2.48±0.05mm [.098±.002]	3mm2	C7	
-	-	2.37±0.05mm [.093±.002]	2.5mm2	D8	
		CRIMP	SIZE	TYPE	RANGE
-	-	WIRE	3.81mm [.150]	F	2.50-4.00mm2
-	-	INSUL	5.33mm [.210]	O	Ø4.32mm MAX
WIRE STRIP LENGTH	TERM APPL SPEC	FEED	APPL INSTRUCTIONS	SET UP GAGE	
5.05-5.43	NONE	27.36mm	408-8039	-	



LOC	DIST	REVISIONS					
A	66	P	LTR	DESCRIPTION	DATE	DWN	APVD
		A		RELEASED	06JAN2010	LG	TE

-	1	-	3-22280-3	SPRING, COMPRESSION	180
-	2	-	2-21002-2	SCR, BTN SKT HD CAP 8-32 X .500	178
-	1	-	1-690461-9	STOP, SHEAR	177
-	1	-	1633851-1	SHEAR HOLDER, REAR	176
-	1	-	2-690463-2	FLOATING SHEAR, REAR	175
-	1	-	371178	WASHER	166
-	1	-	692655-7	AIR FEED VALVE ASSEMBLY	162
-	1	-	460277-4	AIR FEED ASSY	160
-	6	-	3-21000-9	SCR, SKT HD CAP 10-32 X 1.000	123
-	2	-	21024-5	WASHER, SPRG LOCK, REG NO 10	122
-	3	-	2-22733-8	SCR, BHSC, SELF-LOCKING, 1/4-20 X .625	120
-	1	-	21055-6	WASHER, FLAT, REG NO 8	119
-	1	-	3-460680-2	FEED FINGER ASSEMBLY	117
-	1	-	458268-1	CAP, RAM	97
-	1	-	455888-5	SPACER, CRIMPER	96
-	1	-	458267-1	HOUSING, APPLICATOR	95
-	1	-	9-21002-0	SCR, BTN SKT HD CAP 10-32 X 1.25	92
-	1	-	992256-1	WASHER, FLAT	81
-	1	-	9-18023-4	SCR, SKT HD CAP M3 X 35.0	80
-	1	-	1633852-1	INSERT, GUARD	79
-	1	-	217238-1	GENERAL INSTRUCTION PKG	72
-	1	-	4088039	EF APPL INST 408-8039	71
-	1	-	461264-5	PLATE, IDENTIFICATION	67
-	2	-	21017-2	SCREW, DRIVE	66
-	1	-	21009-2	SCR, SET, SELF LOCKING 1/4-20 X .250	63
-	1	-	22733-8	SCR, BHSC, SELF-LOCKING, 8-32 X .375	60
-	2	-	1-21000-3	SCR, SKT HD CAP 4-40 X .250	59
-	1	-	2-21002-1	SCR, BTN SKT HD CAP 8-32 X .375	58
-	4	-	2-21000-6	SCR, SKT HD CAP 8-32 X .375	57
-	2	-	2-21000-9	SCR, SKT HD CAP 8-32 X .750	56
-	2	-	21018-4	NUT, HEX, REG 4-40	54
-	2	-	21022-2	NUT, HEX, SELF-LOCKING, THIN, 8-32	53
-	2	-	2-21006-6	SCR, SET, CUP POINT 4-40 X .625	52
-	1	-	690191-1	PLUG, NYLON	45
-	1	-	1633848-1	RAM, DUAL	44
-	1	-	7-21002-9	SCR, BTN SKT HD CAP 5/16-24 X 1.00	41
-	1	-	690125-1	SHIM SUB-ASSY	39
-	1	-	469367-7	SHIM	38
-	1	-	879103-2	FINE ADJUST HEAD ASSEMBLY	37
-	6	-	21024-4	WASHER, SPRG LOCK, REG NO 8	32
-	1	-	1-24921-8	SCR, BTN SKT HD CAP 10-32 X 1.50	31
-	2	-	2-21002-2	SCR, BTN SKT HD CAP 8-32 X .500	29
-	1	-	2-690451-4	SPACER, STRIPPER	28
-	1	-	468281-9	STRIPPER	27
-	1	-	1633841-1	PLATE, BASE	26
-	2	-	22354-8	STUD, THREADED	25
-	1	-	2-458803-3	PLATE, STRIP GUIDE, SLOTTED	24
-	2	-	22281-6	SPRING, COMPRESSION	22
-	1	-	1-464451-3	ARM, STOCK DRAG	21
-	1	-	1-464452-4	DRAG, STOCK	20
-	1	-	454204-5	GUIDE, LOWER STRIP	19
-	1	-	7-458031-4	STRIP GUIDE, FRONT	18
-	4	-	3-21002-3	SCR, BTN SKT HD CAP 1/4-20 X .500	17
-	1	-	1633558-3	REAR SHEAR PLATE	11
-	2	-	8-240645-2	SPACER, SHEAR PLATE	10
-	1	-	1633849-1	PLATE, FRONT SHEAR	9
1	1	-	3-1633249-9	ANVIL, COMBINATION	8
-	1	-	1-469634-5	BLADE, SLUG	7
-	1	-	1633850-1	DEPRESSOR, SHEAR	6
-	1	-	2-240641-1	SPACER	5
-	1	-	2-238009-9	BLOCK, FL CRIMPER SPACER	4
1	1	-	1633845-1	CRIMPER, INSULATION	3
-	1	-	455888-9	SPACER, CRIMPER	2
1	1	-	1633837-1	CRIMPER, WIRE	1

- 1
- 2
- 3
- 4
- 5
- 6
- 7
- 8
- 9
- 10
- 11
- 12
- 13
- 14
- 15
- 16
- 17
- 18
- 19
- 20
- 21
- 22
- 23
- 24
- 25
- 26
- 27
- 28
- 29
- 30
- 31
- 32
- 33
- 34
- 35
- 36
- 37
- 38
- 39
- 40
- 41
- 42
- 43
- 44
- 45
- 46
- 47
- 48
- 49
- 50
- 51
- 52
- 53
- 54
- 55
- 56
- 57
- 58
- 59
- 60
- 61
- 62
- 63
- 64
- 65
- 66
- 67
- 68
- 69
- 70
- 71
- 72
- 73
- 74
- 75
- 76
- 77
- 78
- 79
- 80
- 81
- 82
- 83
- 84
- 85
- 86
- 87
- 88
- 89
- 90
- 91
- 92
- 93
- 94
- 95
- 96
- 97
- 98
- 99
- 100
- 101
- 102
- 103
- 104
- 105
- 106
- 107
- 108
- 109
- 110
- 111
- 112
- 113
- 114
- 115
- 116
- 117
- 118
- 119
- 120
- 121
- 122
- 123
- 124
- 125
- 126
- 127
- 128
- 129
- 130
- 131
- 132
- 133
- 134
- 135
- 136
- 137
- 138
- 139
- 140
- 141
- 142
- 143
- 144
- 145
- 146
- 147
- 148
- 149
- 150
- 151
- 152
- 153
- 154
- 155
- 156
- 157
- 158
- 159
- 160
- 161
- 162
- 163
- 164
- 165
- 166
- 167
- 168
- 169
- 170
- 171
- 172
- 173
- 174
- 175
- 176
- 177
- 178
- 179
- 180

DIMENSIONS: INCHES		TOLERANCES UNLESS OTHERWISE SPECIFIED:		DATE: 06OCT2009		DRAWN: G. BAILEY		CHECKED: M. DEWING		APPROVED: 06OCT2009	
9 PLC	±	1 PLC	±0.1	2 PLC	±0.01	3 PLC	±0.001	4 PLC	±0.0001	ANGLES	±
MATERIAL		FINISH		WEIGHT		SIZE: A1		CAGE CODE: 00779		DRAWING NO: C=1855542	
CUSTOMER ACCESSIBLE PRODUCTION DRAWING				SCALE: 3:5		SHEET: 1 OF 1		REV: A		RESTRICTED TO:	