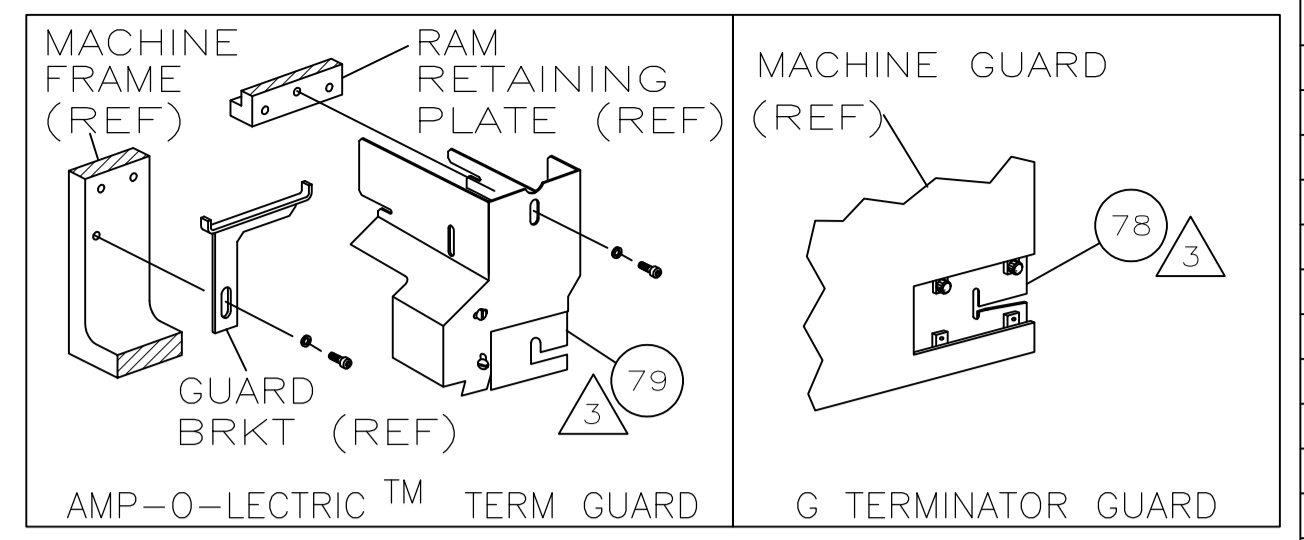


THIS DRAWING IS UNPUBLISHED. RELEASED FOR PUBLICATION. COPYRIGHT BY TYCO ELECTRONICS CORPORATION. ALL INTERNATIONAL RIGHTS RESERVED.

PART NUMBER	REV	FIRST USED
1385008-1	B	122500-1
1385008-2	B	565435-5
1385008-3	B	354500-1

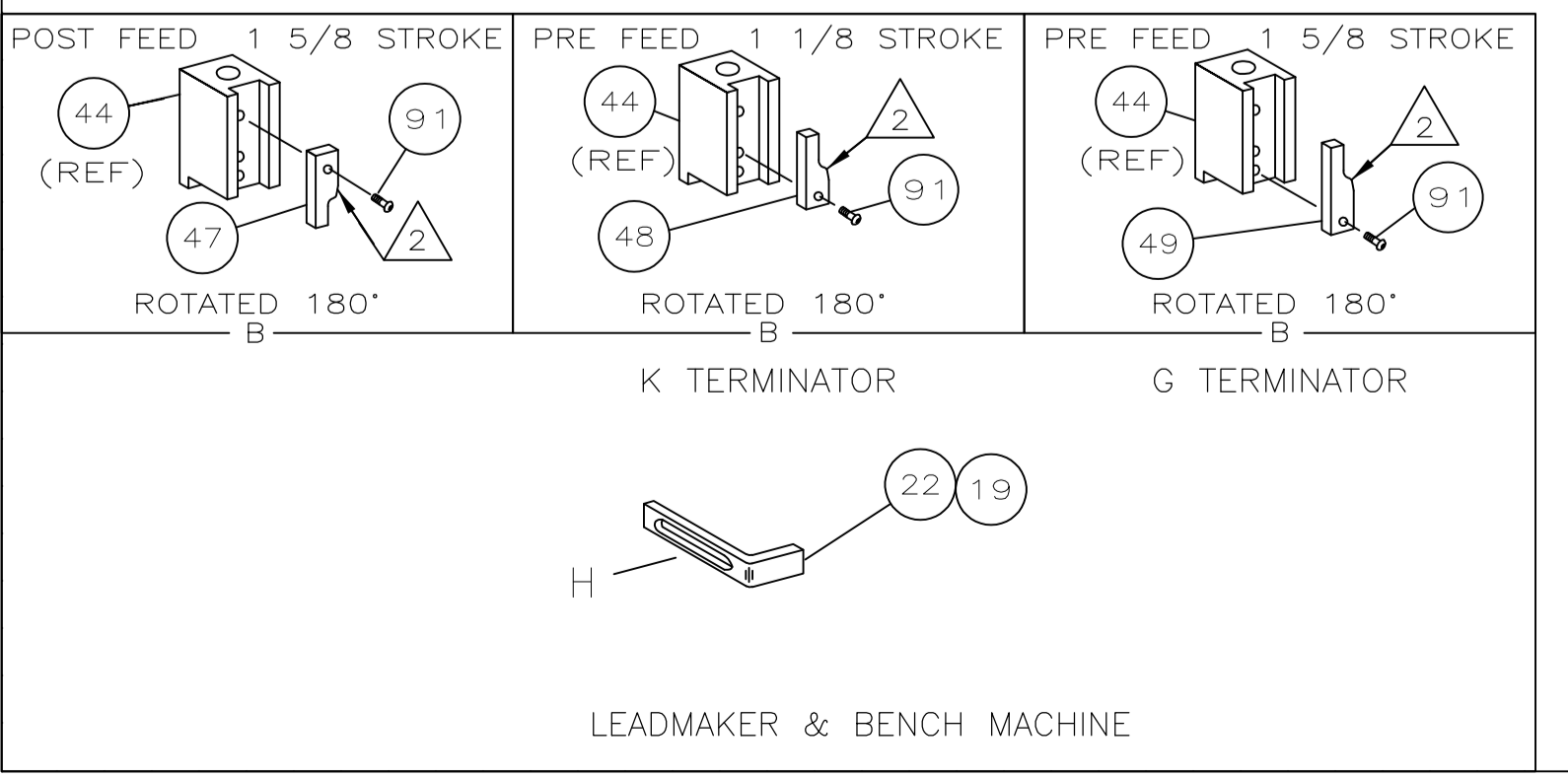
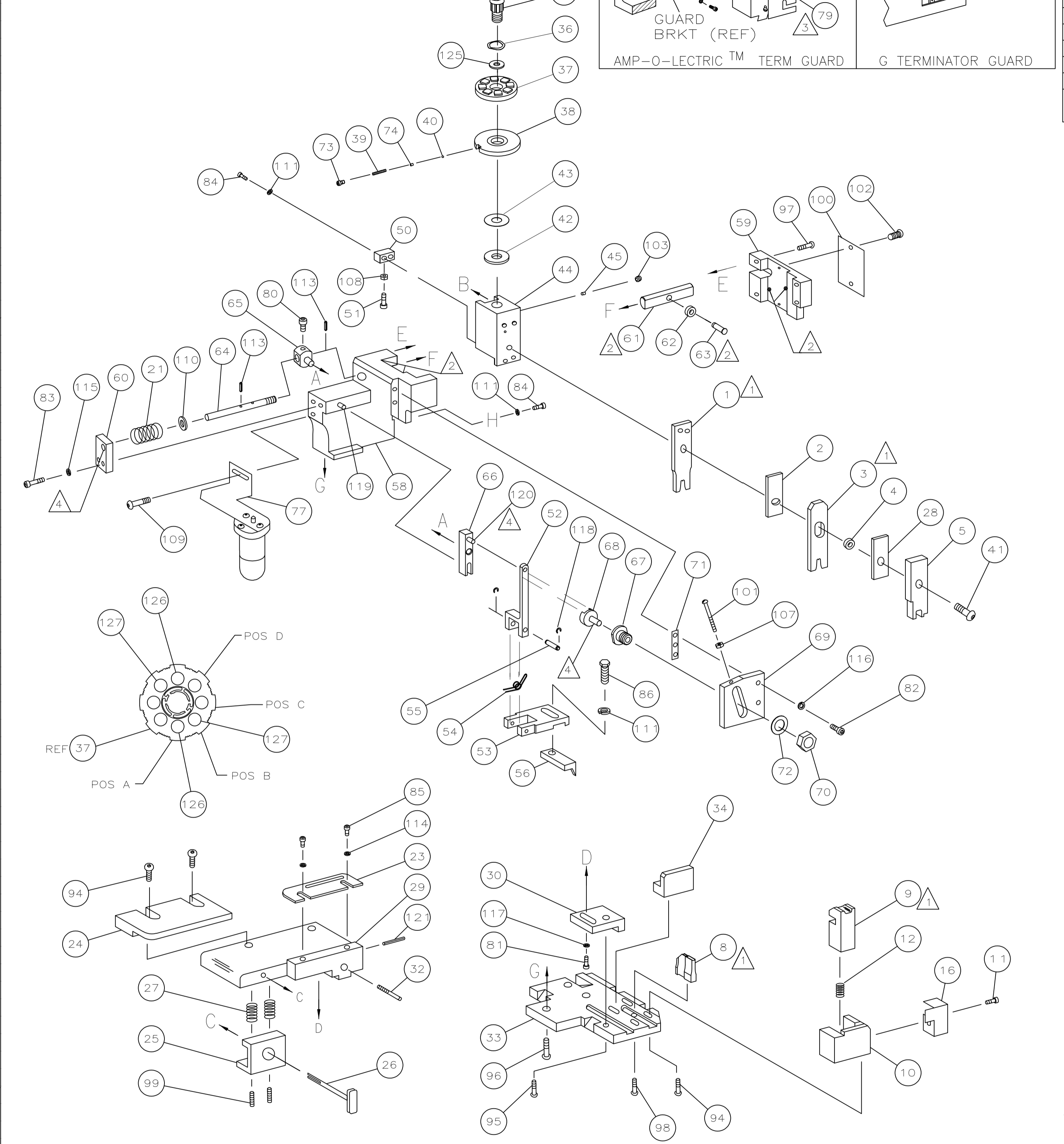


TERMINAL NAME: .070 TAB

AMP	MFG P/N	CRIMP DATA (NON-AMP TERMINAL-AMP SPEC)			
286841	110238-0400	CRIMP HEIGHT: .049 ±.001 [1.24 ±0.03mm] WIRE SIZE: 20			
		CRIMP HEIGHT: .048 ±.001 [1.22 ±0.03mm] WIRE SIZE: 22			
		CRIMP: NOT USED			
		CRIMP: NOT USED			
		WIRE: .070 [1.78mm] TYPE: F RANGE: 22-20			
		INSUL: .070 [1.78mm] 0 .046 MAX			
WIRE STRIP LENGTH	TERM APPL SPEC	FEED	APPL INSTRUCTION	SET UP GAGE	LAYOUT
.125-.156	NONE	.250	408-8040	458637-1	L2317

LOC	DIST	REVISIONS			
F	LTR	DESCRIPTION	DATE	BY	APPV
A	66	ECR-08-015000	6-2008	MY	TE

-1	LEADMAKER	MECH POST FEED
-2	BENCH MODEL K	MECH PRE FEED
-3	BENCH MODEL G	MECH PRE FEED



- 1 RECOMMENDED SPARE PARTS.
- 2 GREASE LIGHTLY.
- 3 GUARD MUST BE IN PLACE WHEN OPERATING APPLICATOR IN A BENCH MACHINE.
- 4 LUBRICATE DAILY USING NO. 20 MACHINE OIL.
- 5. ITEMS WITH QTY OF REF SPECIFIED (EXCEPT ITEMS 78 AND 79) ARE USED ON ITEM 46.

QTY	REF	REF	REF	REF	REF	DESCRIPTION	ITEM NO
1	1	1	1	1	1	PIN, SLT SPR(Ø.093x.75)ST GDE PL	121
2	2	2	2	2	2	PIN, WIRE DISC (.3090)B	127
2	2	2	2	2	2	PIN, WIRE DISC (.3090)A	126
1	1	1	1	1	1	WASHER, FLAT PRECISION	125
1	1	1	1	1	1	GENERAL INSTRUCTION PACKAGE	124
1	1	1	1	1	1	SF APPL INST 408-8040	123
1	1	1	1	1	1	PIN, SLT SPR(Ø.093x.75)ST GDE PL	121
1	1	1	1	1	1	PIN, DOWEL(Ø.187x.50)LEVER	120
1	1	1	1	1	1	PIN, DOWEL(Ø.187x1.25)HOUSING	119
1	1	1	1	1	1	RING, RET "C"(Ø.187)FD FING PIN	118
1	1	1	1	1	1	WASHER, LOCK(#10)ADJ BLOCK	117
1	1	1	1	1	1	WASHER, LOCK(#10)ADJ PLATE	116
1	1	1	1	1	1	WASHER, LOCK(#10)FEED GDE ROD	115
2	2	2	2	2	2	WASHER, LOCK(#4)FRONT STP GUIDE	114
1	1	1	1	1	1	PIN, SLT SPR(Ø.125x.50)ADJ ROD	113
4	4	4	4	4	4	WASHER, LOCK(#8)STRIPPER	111
1	1	1	1	1	1	WASHER, FLAT(Ø5/16)SCREW ADJ	110
1	1	1	1	1	1	SCR, BHC(10-32x.38)LUBE ASSY	109
1	1	1	1	1	1	NUT, HEX(NO.6)HOLDDOWN	108
1	1	1	1	1	1	NUT, HEX(6-32)FEED ADJ	107
1	1	1	1	1	1	SCR, SKT SET(1/4-20x.25 LW)RAM	103
2	2	2	2	2	2	SCR, DRIVE(#2x.19)ID PLATE	102
1	1	1	1	1	1	SCR, PAN HD(6-32x1.50)FEED ADJ	101
1	1	1	1	1	1	PLATE, IDENTIFICATION	100
2	2	2	2	2	2	SCR, SET(10-32x.75)DRAG	99
1	1	1	1	1	1	SCR, BHC(8-32x.38 LW)ANVIL	98
1	1	1	1	1	1	SCR, BHC(10-32x.75)CAP	97
1	1	1	1	1	1	SCR, BHC(1/4-20x.62)HOUSING	96
1	1	1	1	1	1	SCR, BHC(10-32x.50)SG ADJ BLOCK	95
4	4	4	4	4	4	SCR, BHC(8-32x.50)TERM H DWN	94
1	1	1	1	1	1	SCR, BHC(6-32x.38)CAM	91
1	1	1	1	1	1	SCR, HEX HD(8-32x.31)FEED FINGER	86
2	2	2	2	2	2	SCR, SHC(4-40x.25)F ST GUIDE	85
3	3	3	3	3	3	SCR, SHC(8-32x.50)STRIPPER	84
1	1	1	1	1	1	SCR, SHC(10-32x.75)FEED ROD GD	83
1	1	1	1	1	1	SCR, SHC(10-32x.62)ADJ BLK	82
1	1	1	1	1	1	SCR, SHC(10-32x.38)SG ADJ BL	81
1	1	1	1	1	1	SCR, SHC(10-32x.38)PIVOT BLK	80
1	1	1	1	1	1	GUARD, WINDOW	79
1	1	1	1	1	1	INSERT, GUARD	78
1	1	1	1	1	1	LUBRICATOR ASSY	77
1	1	1	1	1	1	SPRING, ASSIST	74
1	1	1	1	1	1	SCR, SHC(6-32x.25 SL)INS DISC	73
1	1	1	1	1	1	WASHER, SPECIAL	72
1	1	1	1	1	1	SPACER	71
1	1	1	1	1	1	SPRING, FEED RETURN	21
1	1	1	1	1	1	STRIPPER	20
1	1	1	1	1	1	STRIPPER	19
1	1	1	1	1	1	STRIPPER	18
1	1	1	1	1	1	STRIPPER	17
1	1	1	1	1	1	STRIPPER	16
1	1	1	1	1	1	STRIPPER	15
1	1	1	1	1	1	STRIPPER	14
1	1	1	1	1	1	STRIPPER	13
1	1	1	1	1	1	STRIPPER	12
1	1	1	1	1	1	STRIPPER	11
1	1	1	1	1	1	STRIPPER	10
1	1	1	1	1	1	STRIPPER	9
1	1	1	1	1	1	STRIPPER	8
1	1	1	1	1	1	STRIPPER	7
1	1	1	1	1	1	STRIPPER	6
1	1	1	1	1	1	STRIPPER	5
1	1	1	1	1	1	STRIPPER	4
1	1	1	1	1	1	STRIPPER	3
1	1	1	1	1	1	STRIPPER	2
1	1	1	1	1	1	STRIPPER	1

QTY	REF	REF	REF	REF	REF	DESCRIPTION	ITEM NO
1	1	1	1	1	1	NUT, HEX(1/2-20)	70
1	1	1	1	1	1	PLATE, ADJUSTMENT	69
1	1	1	1	1	1	SHAFT, PIVOT	68
1	1	1	1	1	1	BUSHING	67
1	1	1	1	1	1	LEVER, INTERMEDIATE	66
1	1	1	1	1	1	BLOCK, PIVOT	65
1	1	1	1	1	1	SCREW, ADJ FEED ROD	64
1	1	1	1	1	1	PIN, CAM ROLLER	63
1	1	1	1	1	1	ROLLER, CAM	62
1	1	1	1	1	1	ROD, FEED	61
1	1	1	1	1	1	GUIDE, FEED ROD	60
1	1	1	1	1	1	CAP, RAM	59
1	1	1	1	1	1	HOUSING	58
1	1	1	1	1	1	PAWL, FEED	56
1	1	1	1	1	1	PIN, FEED FINGER	55
1	1	1	1	1	1	SPRING, FEED FINGER	54
1	1	1	1	1	1	HOLDER, FEED FINGER	53
1	1	1	1	1	1	LEVER, TERMINAL FEED ARM	52
1	1	1	1	1	1	BUMPER, HOLDDOWN	51
1	1	1	1	1	1	SPACER, TONKER	50
1	1	1	1	1	1	CAM, PRE-FEED 1 5/8 ST	49
1	1	1	1	1	1	CAM, PRE-FEED 1 1/8 ST	48
1	1	1	1	1	1	CAM, POST-FEED 1 5/8 ST	47
1	1	1	1	1	1	APPLICATOR, BASIC (SUBASSY)	46
1	1	1	1	1	1	PLUG, NYLON	45
1	1	1	1	1	1	RAM	44
1	1	1	1	1	1	WASHER, LAMINATED	43
1	1	1	1	1	1	WASHER, RAM	42
1	1	1	1	1	1	BOLT, CRIMPER(5/16x1.00)	41
1	1	1	1	1	1	BALL, STEEL	40
1	1	1	1	1	1	SPRING, COMPRESSION	39
1	1	1	1	1	1	DISC, INSULATION	38
1	1	1	1	1	1	WIRE DISC, PLASTIC	37
1	1	1	1	1	1	WASHER, SPRING	36
1	1	1	1	1	1	POST, RAM	35
1	1	1	1	1	1	SUPPORT, TERMINAL	34
1	1	1	1	1	1	PLATE, BASE	33
1	1	1	1	1	1	SCREW, ADJUSTMENT	32
1	1	1	1	1	1	SCREW, ADJUSTMENT	31
1	1	1	1	1	1	BLOCK, STRIP GUIDE ADJ	30
1	1	1	1	1	1	PLATE, STRIP GUIDE	29
1	1	1	1	1	1	SPACER, FRONT SHEAR DEP	28
2	2	2	2	2	2	SPRING, DRAG	27
1	1	1	1	1	1	LEVER, DRAG RELEASE	26
1	1	1	1	1	1	DRAG, TERMINAL	25
1	1	1	1	1	1	GUIDE, STRIP (REAR)	24
1	1	1	1	1	1	GUIDE, STRIP (FRONT)	23
1	1	1	1	1	1	STRIPPER	22
1	1	1	1	1	1	SPRING, FEED RETURN	21
1	1	1	1	1	1	STRIPPER	20
1	1	1	1	1	1	STRIPPER	19
1	1	1	1	1	1	STRIPPER	18
1	1	1	1	1	1	STRIPPER	17
1	1	1	1	1	1	STRIPPER	16
1	1	1	1	1	1	STRIPPER	15
1	1	1	1	1	1	STRIPPER	14
1	1	1	1	1	1	STRIPPER	13
1	1	1	1	1	1	STRIPPER	12
1	1	1	1	1	1	STRIPPER	11
1	1	1	1	1	1	STRIPPER	10
1	1	1	1	1	1	STRIPPER	9
1	1	1	1	1	1	STRIPPER	8
1	1	1	1	1	1	STRIPPER	7
1	1	1	1	1	1	STRIPPER	6
1	1	1	1	1	1	STRIPPER	5
1	1	1	1	1	1	STRIPPER	4
1	1	1	1	1	1	STRIPPER	3
1	1	1	1	1	1	STRIPPER	2
1	1	1	1	1	1	STRIPPER	1

THIS DRAWING IS A CONTROLLED DOCUMENT.

DIMENSIONS: INCHES	TOLERANCES UNLESS OTHERWISE SPECIFIED:	0 PLC ± .005	1 PLC ± .002	2 PLC ± .001	3 PLC ± .0005	4 PLC ± .0002	ANGLES ± .005
MATERIAL	FINISH	WEIGHT	SIZE	CAGE CODE	DRAWING NO	RESTRICTED TO	
			A1	00779	1385008		

CUSTOMER DRAWING SCALE: 1 OF 1 REV: B