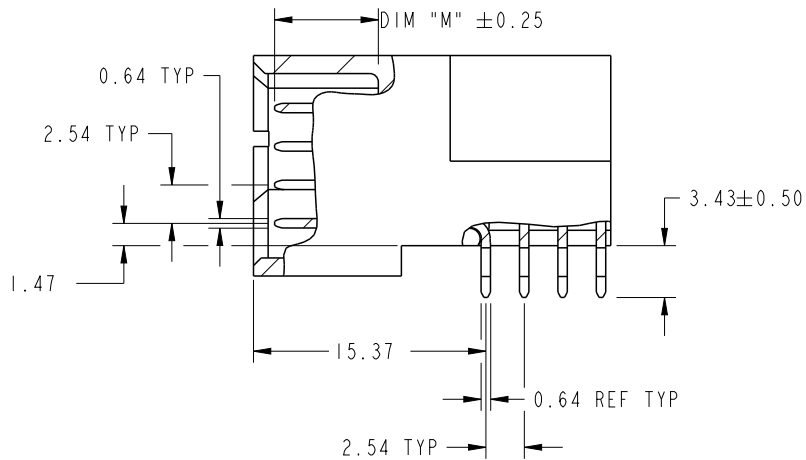


CODE	DIM "M" MATING LENGTH	CONTACT TYPE
SD	[6.86]	SIGNAL
SC	[6.86]	SIGNAL
SB	[6.86]	SIGNAL
SA	[6.86]	SIGNAL
HA	[N/A]	HOLD-DOWN
PX	[N/A]	POWER

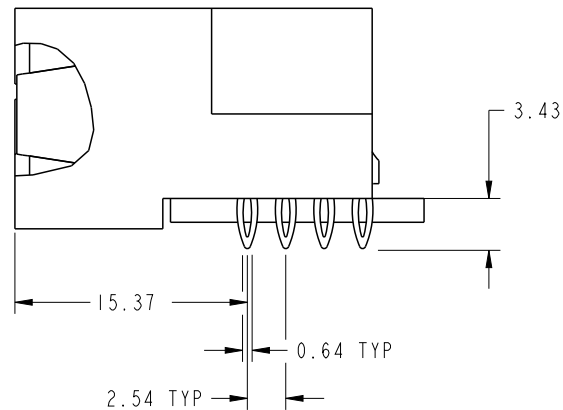
spec ref	*	dr	Ruan MT	2013/03/20	projection	MM	size	A4	scale	1:1	
tolerance std	TOLERANCES UNLESS OTHERWISE SPECIFIED	eng	Jackie Huang	2013/09/12			ecn no	ELX-DG-15800-1			
SEE NOTE		chr	-	-				product family	PwrBlade	rel level	Released
surface	linear	0.X	±0.5		title	6P+12S+4P	dwg no	51939-733	rev	B	
		0.XX	±0.25								
	angular	0°	±2°								www.fci.com

PRODUCT NUMBER

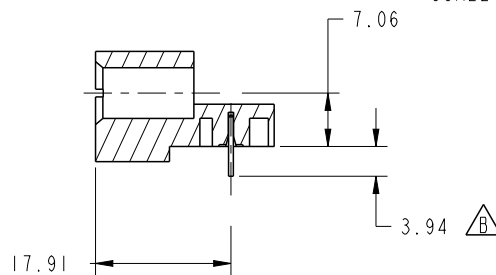
51939-733--
NOTE: 3



BROKEN-OUT SECTION A-A
SCALE 2:1



BROKEN-OUT SECTION B-B
SCALE 2:1

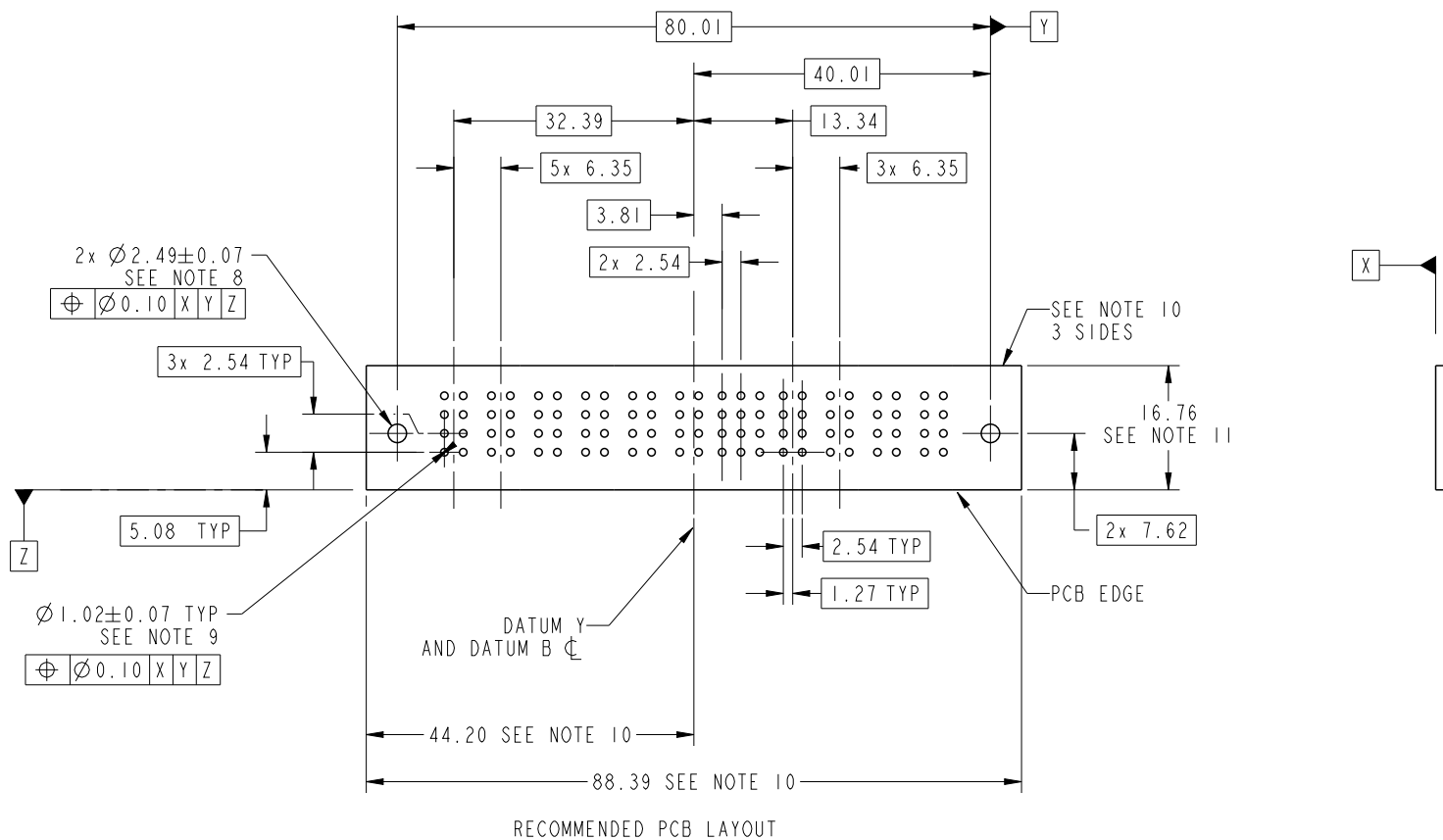


SECTION C-C

dr	Ruan MT	2013/03/20	projection 	MM 	size	A4	scale	1:1
eng	Jackie Huang	2013/09/12			ecn no	ELX-DG-15800-1		
chr	-	-			rel level	Released		
appr	Pei-Ming Zheng	2013/09/12	product family	PwrBlade		rev	B	
		title	6P+12S+4P RIGHT ANGLE PF HEADER		dwg no	51939-733		
www.fci.com	cat. no.	-	Product - Customer Drw			sheet 2 of 4		

PRODUCT NUMBER

51939-733_
NOTE: 3



Copyright FCI.

dr	Ruan MT	2013/03/20	projection 	MM 	size	A4	scale	1:1
eng	Jackie Huang	2013/09/12			ecn no	ELX-DG-15800-1		
chr	-	-			rel level	Released		
appr	Pei-Ming Zheng	2013/09/12	product family	PwrBlade				
		title		6P+12S+4P		dwg no		51939-733
www.fci.com		cat. no.		-		Product - Customer Drw		rev
						sheet 3 of 4		B

PRODUCT NUMBER

51939-733__
NOTE: 3


NOTES:

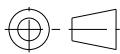
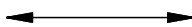

1. DIMENSIONS AND TOLERANCES ARE IN ACCORDANCE WITH ASME Y14.5M, 1994 UNLESS OTHERWISE SPECIFIED.

CONNECTOR NOTES:

- 2. HOUSING MATERIAL: UL 94 V-0 GLASS FILLED HIGH-TEMP THERMOPLASTIC
POWER CONTACT MATERIAL: COPPER ALLOY
SIGNAL PIN MATERIAL: COPPER ALLOY
- 3. SEE ITEM 3 & 4 IN PRINT 10064183 FOR PLATING SPEC OF 51939-733 AND 51939-733LF RESPECTIVELY.
- 4. MANUFACTURER'S NAME, DATE CODE AND OPTIONAL P/N TO APPEAR ON THIS SURFACE. THE MARK CAN BE OMITTED IF THERE IS NOT ENOUGH SPACE ON THIS SURFACE.
- 5. PRODUCT SPECIFICATION GS-12-149.
APPLICATION SPECIFICATION BUS-20-067.
- 6. PACKAGED IN TRAYS.

PCB NOTES:

- 7. ALL HOLE DIAMETERS ARE FINISHED HOLE SIZE.
- 8. MOUNTING HOLES, WHERE APPLICABLE, ARE UNPLATED.
- 9. $\varnothing 1.151 \pm 0.025$ DRILLED HOLES PLATED WITH
0.008 MIN SnPb OR Sn OVER 0.03
TO 0.08 Cu PLATING TO ACHIEVE
 $\varnothing 1.02 \pm 0.07$ HOLE.
- 10. CONNECTOR KEEP-OUT ZONE.
- 11. A  SYMBOL WILL BE NEXT TO ANY DIMENSION, VIEW, OR NOTE WHICH HAS BEEN MODIFIED WITH THE CURRENT DRAWING REVISION.

dr	Ruan MT	2013/03/20	projection 	MM 	size	A4	scale	1:1			
eng	Jackie Huang	2013/09/12			ecn no	ELX-DG-15800-1					
chr	-	-			product family	PwrBlade	rel level	Released			
appr	Pei-Ming Zheng	2013/09/12			title	6P+12S+4P		dwg no	51939-733	rev	B
www.fci.com		cat. no.	-	Product - Customer Drw			sheet 4 of 4				



Copyright FCI.