

4

3

2

1

THIS DRAWING IS UNPUBLISHED.

RELEASED FOR PUBLICATION

© COPYRIGHT

ALL RIGHTS RESERVED.

LOC DIST

REVISIONS

P	LTR	DESCRIPTION	DATE	DWN	APVD

REPLACED BY OCEAN STYLE APPLICATOR PART NUMBER

FOR REPLACEMENT PARTS FOR APPLICATOR REFER TO ADDITIONAL PAGE(S). SPARE PARTS KIT (IF LISTED) WILL REMAIN AVAILABLE.

THE REPLACEMENT OCEAN STYLE APPLICATOR HAS THE SAME TERMINATOR/PRESS INTERFACE AS APPLICATOR

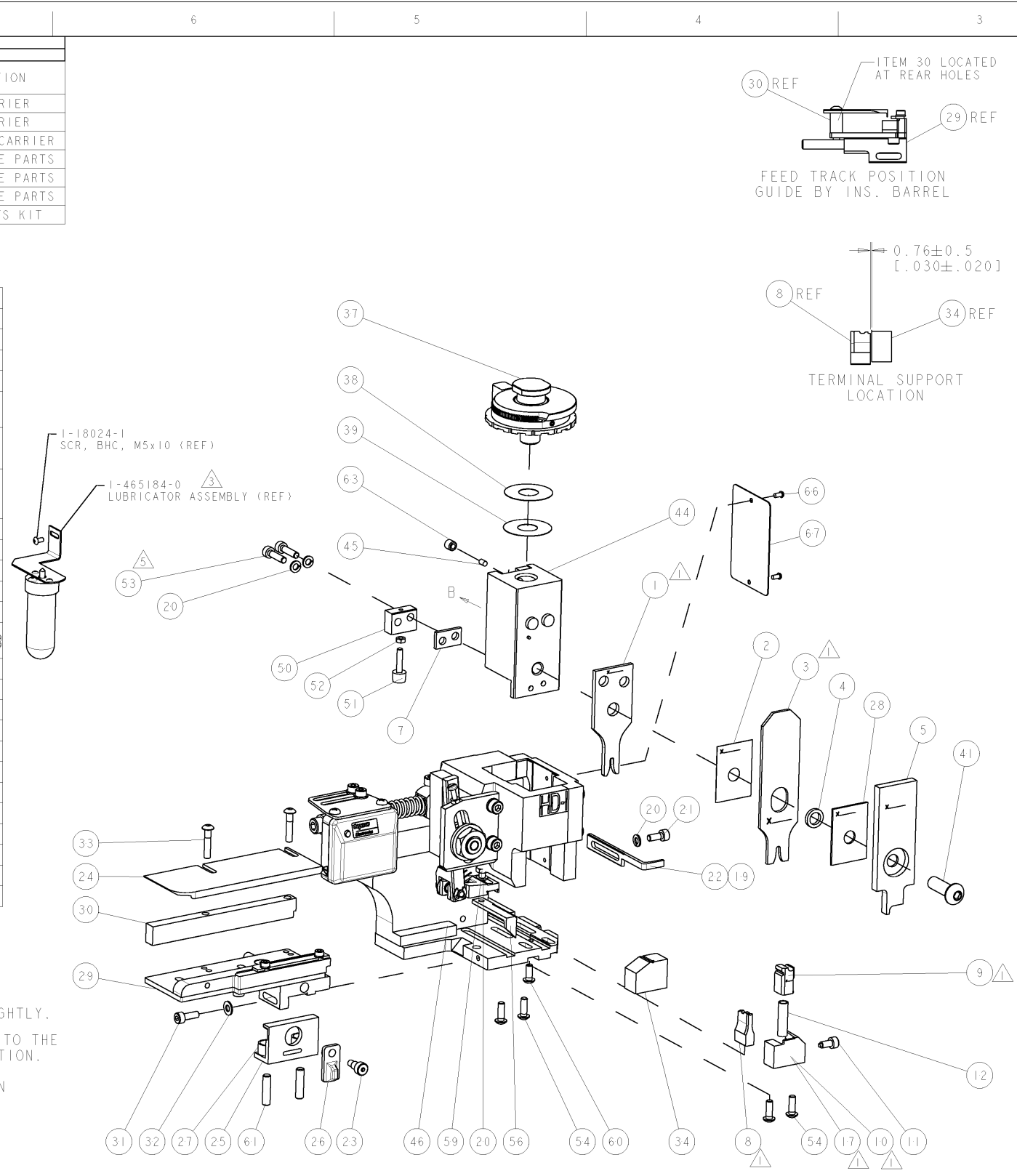
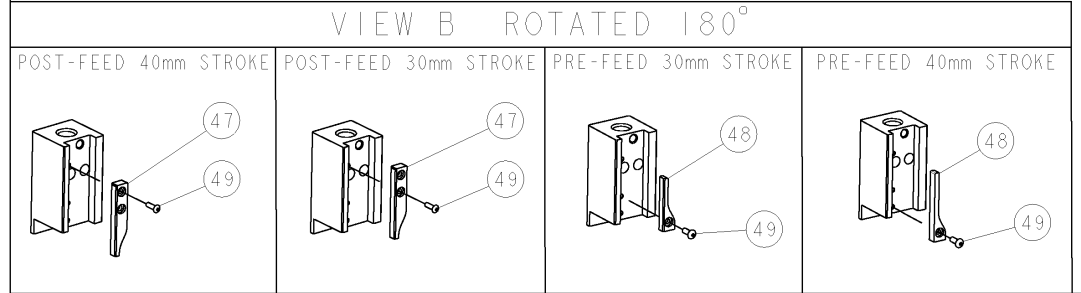
THIS DRAWING IS A CONTROLLED DOCUMENT.		DWN	 TE Connectivity		
DIMENSIONS:		CHK			
TOLERANCES UNLESS OTHERWISE SPECIFIED:		APVD	NAME		
 <ul style="list-style-type: none"> 0 PLC ± 1 PLC ± 2 PLC ± 3 PLC ± 4 PLC ± ANGLES ± 		PRODUCT SPEC	RESTRICTED TO		
		APPLICATION SPEC	SIZE	CAGE CODE	DRAWING NO
MATERIAL	FINISH	WEIGHT	A3	C-	
		SCALE	SHEET	OF	REV

PART NUMBER	REV	TERMINATOR	FEED TYPE	DESCRIPTION
1528793-1	A	LEADMAKER	MECH POST FEED	CUTS CARRIER
1528793-2	A	BENCH	MECH PRE FEED	CUTS CARRIER
1528793-6	A	LEADMAKER	MECH POST FEED	CONTINUOUS CARRIER
7-1528793-1	A	LEADMAKER	MECH POST FEED	-1 AND SPARE PARTS
7-1528793-2	A	BENCH	MECH PRE FEED	-2 AND SPARE PARTS
7-1528793-6	A	LEADMAKER	MECH POST FEED	-6 AND SPARE PARTS
7-1528793-7	A	-	-	SPARE PARTS KIT

CRIMP DATA		TYCO TERMINAL		TYCO CRIMP SPECS	
TERMINAL NAME: CTC, PIN & SOCKET ASSY .062 TYPE III+					
CRIMP	SIZE	TYPE	RANGE		
WIRE	2.29 (.090 IN)	F	0.75-2.00mm ² or 18-14 AWG		
INSUL	3.05 (.120 IN)	O	2.03-2.79 (.080-.110 IN)		
WIRE STRIP LENGTH 3.58-4.34 (.141-.171 IN)		APPL INSTRUCTIONS 408-8322 & 408-8490			
TERMINAL APPL SPEC 114-10004		FEED 12.70 (.500 IN)			
TERMINALS APPLIED					
SOCKET	PIN				
66358	66359				
WIRE SIZE	CRIMP HEIGHT	REF SETTINGS			
2.00mm ²	1.78 ± 0.05 (.070 ± .002 IN)	A	7		
14 AWG	1.73 ± 0.05 (.068 ± .002 IN)	B	0		
1.50mm ²	1.65 ± 0.05 (.065 ± .002 IN)	B	5		
16 AWG	1.50 ± 0.05 (.059 ± .002 IN)	C	8		
1.00mm ²	1.47 ± 0.05 (.058 ± .002 IN)	C	9		
0.75mm ²	1.37 ± 0.05 (.054 ± .002 IN)	D	5		
18 AWG	1.32 ± 0.05 (.052 ± .002 IN)	D	9		

- △ RECOMMENDED SPARE PARTS.
2. GREASE RAM, CAM, CAM FOLLOWER AND FEED ROD LIGHTLY.
- △ CERTAIN TERMINALS REQUIRE LUBRICATION. REFER TO THE APPLICATOR INSTRUCTION SHEET FOR MORE INFORMATION.
4. LUBRICATE DAILY PER THE APPLICATOR INSTRUCTION SHEET SUPPLIED WITH THE APPLICATOR.
- △ CUT TO LENGTH AT ASSEMBLY.

*** WARNING**
ON INSTALLATION, SET WIRE DISC TO LARGEST WIRE SIZE SETTING. USE OF SETTINGS BELOW MIN. REQUIRED CRIMP HEIGHT SETTING WILL CAUSE DAMAGE TO CRIMP TOOLING.



ITEM NO	PART NO	DESCRIPTION
74		
73		
72		
71		
70		
69		
68		
67		
66		
65		
64		
63		
62		
61		
60		
59		
58		
57		
56		
55		
54		
53		
52		
51		
50		
49		
48		
47		
46		
45		
44		
43		
42		
41		
40		
39		
38		
37		
36		
35		
34		
33		
32		
31		
30		
29		
28		
27		
26		
25		
24		
23		
22		
21		
20		
19		
18		
17		
16		
15		
14		
13		
12		
11		
10		
9		
8		
7		
6		
5		
4		
3		
2		
1		

SET UP GAGE		REVISONS	
458637-3	LOC A	REV	DATE
		A	SEE ECO-07-012677

ITEM NO	PART NO	DESCRIPTION	DATE	BY	APPV
73					
72					
71	1338705-3	DOCUMENTATION PACKAGE			
70					
69					
68					
67	461264-5	PLATE, IDENTIFICATION			
66	21017-2	SCREW, DRIVE			
65					
64					
63	3-18031-0	SCR, SET, CUP POINT M6 X 6.0			
62					
61	2-18032-5	SCR, SET, FLT POINT M5 X 20.0			
60	18024-7	SCR, BTN SKT HD CAP (M4 X 10.0)			
59	5-18022-2	SCR, HEX HD CAP M4 X 8.0			
58					
57					
56	1338685-1	PAWL, FEED			
55					
54	18024-8	SCR, BTN SKT HD CAP (M4 X 12.0)			
53	1-18023-3	SCR, SKT HD CAP M4 X 16.0			
52	18030-1	NUT, HEX, REG M3			
51	811242-5	BUMPER, HOLD DOWN			
50	690753-2	SPACER, TONKER			
49	18024-3	SCR, BTN SKT HD CAP (M3 X 10.0)			
48	1338675-1	CAM, UNIVERSAL PRE FEED			
47	1338676-1	CAM, UNIVERSAL POST-FEED			
46	1320999-3	APPLICATOR SUBASSEMBLY, HDI			
45	690191-1	PLUG, NYLON			
44	1338660-1	RAM			
43					
42					
41	2-18024-6	SCR, BTN SKT HD CAP (M8 X 25.0)			
40					
39	690125-1	SHIM SUB-ASSY			
38	469367-1	SHIM			
37	879103-2	FINE ADJUST HEAD ASSEMBLY			
36					
35					
34	1424186-2	SUPPORT, TERMINAL			
33	1-18024-0	SCR, BTN SKT HD CAP (M4 X 20.0)			
32	18027-2	WASHER, FLAT, REG M4			
31	1-18023-2	SCR, SKT HD CAP M4 X 12.0			
30	1320908-1	SPACER, STRIP GUIDE			
29	1633073-1	STRIP GUIDE ASSEMBLY			
28	1-455888-0	SPACER, CRIMPER			
27	1-22284-0	SPRING, COMPRESSION			
26	356835-1	LEVER, DRAG RELEASE			
25	240792-1	DRAG, TERMINAL			
24	1320928-3	PLATE, STRIP GUIDE			
23	980371-4	SCR, SKT HD SHLDR 5.0 DIA X 6.0			
22	690472-2	STRIPPER			
21	1-18023-1	SCR, SKT HD CAP M4 X 10.0			
20	18025-2	WASHER, SPRG LOCK, REG M4			
19	690472-1	STRIPPER			
18					
17	1338684-1	SHEAR HOLDER, FRONT			
16					
15					
14					
13					
12	3-22280-3	SPRING, COMPRESSION			
11	356885-4	STOP, SHEAR			
10	1320921-1	SHEAR HOLDER, FRONT, CUT			
9	462006-1	FLOATING SHEAR, FRONT			
8	1-1333228-6	ANVIL, COMBINATION			
7	240641-9	SPACER			
6					
5	2-455889-0	DEPRESSOR, SHEAR			
4	238011-5	BLOCK, CRIMPER SPACER			
3	6-456135-0	CRIMPER, INSULATION O PREMIUM			
2	455888-1	SPACER, CRIMPER			
1	7-456406-0	CRIMPER, WIRE PREMIUM			

DIMENSIONS		TOLERANCES UNLESS OTHERWISE SPECIFIED:		APPROVED	
mm [IN]	0 PLC	±		DATE	BY
	1 PLC	±		26APR2007	
	2 PLC	±			
	3 PLC	±			
	4 PLC	±			