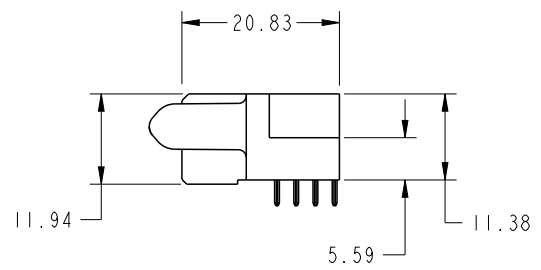
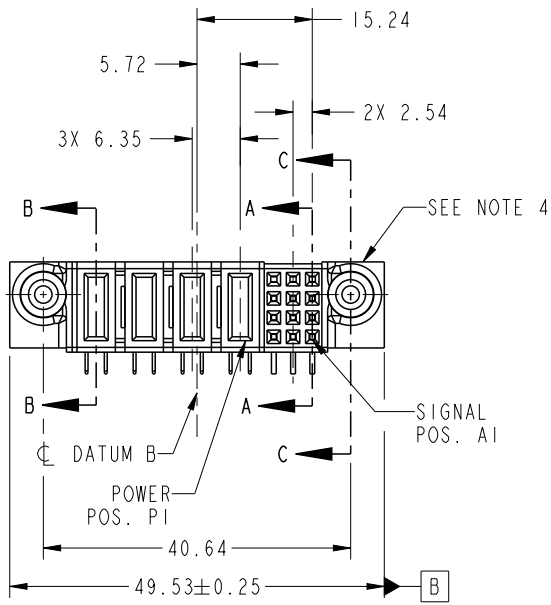


PRODUCT NO. 51866-050-- NOTE: 3	ROWS D C B A	POWER					SIGNAL				
		E2	P4	P3	P2	P1	3	2	1	E1	



CODE	DIM "M" MATING LENGTH	CONTACT TYPE
PA	0.042 [1.07]	POWER
H	N/A [N/A]	SIGNAL
G	N/A [N/A]	SIGNAL
F	N/A [N/A]	SIGNAL
E	N/A [N/A]	SIGNAL
PC	0.092 [2.34]	POWER



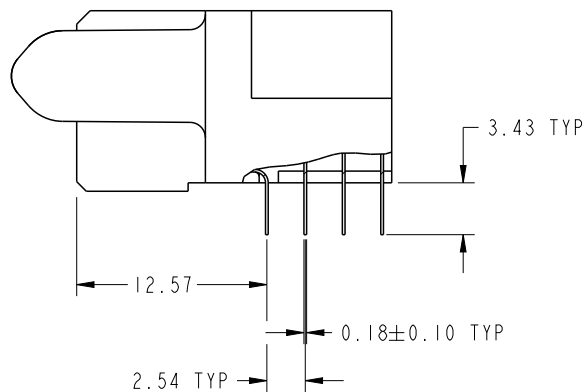
Copyright FCI.

spec ref		SEE NOTES		dr	Guang, Shi	2011/12/09	projection 	MM ←→	size	A4	scale	1:1			
tolerance std		TOLERANCES UNLESS OTHERWISE SPECIFIED		eng	Luo Weller	2012/09/16			product family	PwrBlade	ecn no			-	
SEE NOTES				chr	-	-					rel level			Released	
surface	linear	0.X	±0.50	FCI	www.fci.com	title	12S + 4P	dwg no	51866-050	rev	A	cat. no.	-	Product - Customer Drw	sheet 1 of 4
		0.XX	±0.25												
	angular	0°	±2°												

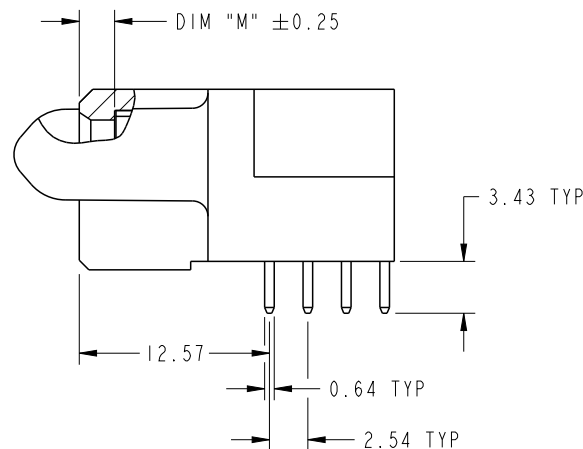
PrdE File - REV C - 2009-06-09

PRODUCT NUMBER

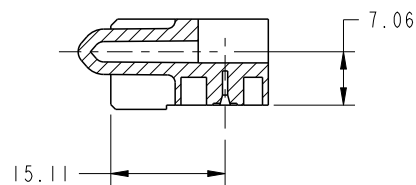
51866-050\_\_  
NOTE: 3



BROKEN-OUT SECTION A-A  
SCALE 2:1



BROKEN-OUT SECTION B-B  
SCALE 2:1

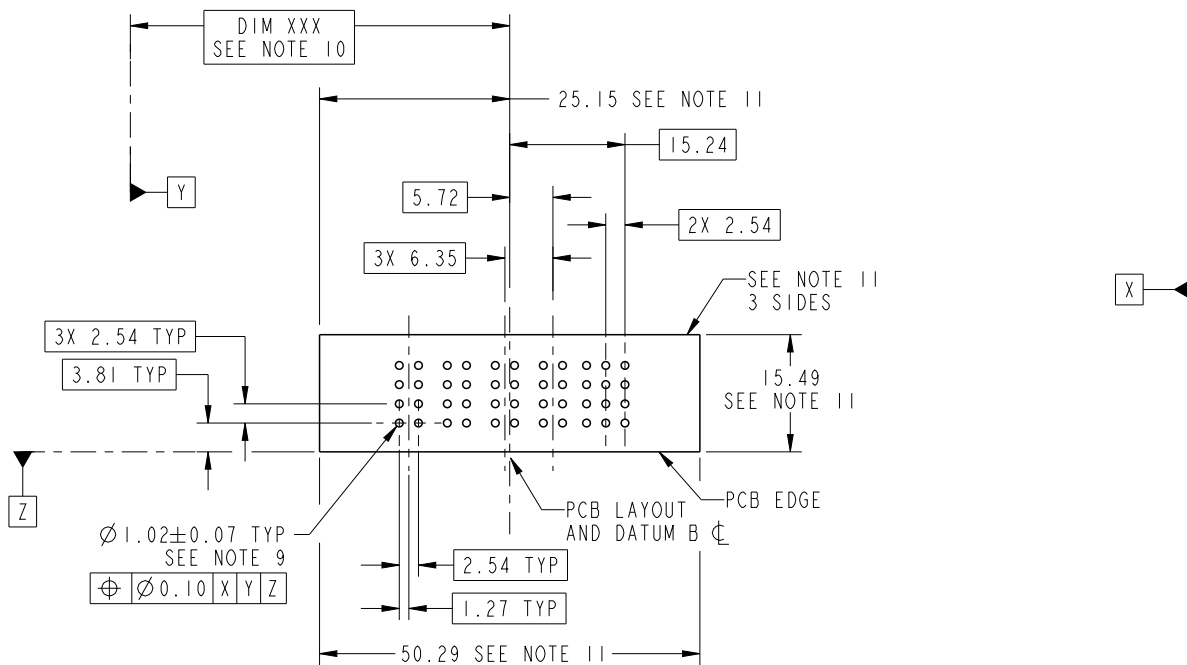


SECTION C-C

dr	Guang, Shi	2011/12/09	projection 	MM ←→	size	A4	scale	1:1
eng	Luo Weller	2012/09/16			ecn no	-		
chr	-	-			rel level	Released		
appr	Pei-Ming Zheng	2012/09/17	product family	PwrBlade	rev	A		
	title	12S + 4P R/A STB RECEPTACLE		dwg no	51866-050			
www.fci.com	cat. no.	-	Product - Customer Drw	sheet 2 of 4				

PRODUCT NUMBER

51866-050\_\_  
NOTE: 3



Copyright FCI.

dr	Guang, Shi	2011/12/09	projection 	MM 	size	A4	scale	1:1			
eng	Luo Weller	2012/09/16			ecn no	-					
chr	-	-			rel level	Released					
appr	Pei-Ming Zheng	2012/09/17	product family	PwrBlade							
		title			12S + 4P		dwg no		51866-050	rev	A
www.fci.com		cat. no.			-		Product - Customer Drw		sheet 3 of 4		

PRODUCT NUMBER

51866-050\_\_  
NOTE: 3

NOTES:

1. DIMENSIONS AND TOLERANCES ARE IN ACCORDANCE WITH ASME Y14.5M, 1994 UNLESS OTHERWISE SPECIFIED.

CONNECTOR NOTES:

- 2. HOUSING MATERIAL: UL 94 V-0 GLASS FILLED HIGH-TEMP THERMOPLASTIC  
POWER CONTACT MATERIAL: COPPER ALLOY  
SIGNAL PIN MATERIAL: COPPER ALLOY
- 3. SEE ITEM 5 & 6 IN PRINT 10064183 FOR PLATING SPEC OF 51866-050 AND 51866-050LF RESPECTIVELY.
- 4. MANUFACTURER'S NAME, DATE CODE AND OPTIONAL P/N TO APPEAR ON THIS SURFACE. THE P/N CAN BE OMITTED IF THERE IS NOT ENOUGH SPACE ON THIS SURFACE.
- 5. PRODUCT SPECIFICATION GS-12-149.  
APPLICATION SPECIFICATION BUS-20-067.
- 6. PACKAGED IN TRAYS.

PCB NOTES:

- 7. ALL HOLE DIAMETERS ARE FINISHED HOLE SIZE.
- 8. MOUNTING HOLES, WHERE APPLICABLE, ARE UNPLATED.
- 9.  $\varnothing 1.151 \pm 0.025$  DRILLED HOLES PLATED WITH 0.008 MIN SnPb OR Sn OVER 0.03 TO 0.08 Cu PLATING TO ACHIEVE  $\varnothing 1.02 \pm .07$  HOLE.
- 10. "DIM XXX" TO BE DETERMINED BY THE CUSTOMER.
- 11. CONNECTOR KEEP-OUT ZONE.
- 12. THE VOID CORING IN BETWEEN POWER MODULES, SIGNAL MODULES AND END MODULES ARE OPTIONAL AND THE SHAPE MAY BE DIFFERENT FOR OPTIMIZE THE MOLDING PROCESS. THE VOID CORING WILL NOT EFFECT TO PRODUCT FUNCTION.

dr	Guang, Shi	2011/12/09	projection 	MM 	size	A4	scale	1:1	
eng	Luo Weller	2012/09/16			ecn no	-			
chr	-	-							
appr	Pei-Ming Zheng	2012/09/17	product family	PwrBlade	rel level	Released			
		title	12S + 4P R/A STB RECEPTACLE		dwg no	51866-050		rev	A
www.fci.com		cat. no.	-	Product - Customer Drw	sheet 4 of 4				



Copyright FCI.