

ATLANTIC VERSION TERMINATOR INTERFACE ADAPTER	PART NUMBER	REVISION	DESCRIPTION	FEED TYPE	APPLICATOR STYLE CONVERSION CHART						
					CONVERT TO	PART NUMBERS REQUIRED					
	2150102-1	A	FINE CRIMP HEIGHT ADJUST	MECHANICAL	PNEUMATIC FEED	2119950-1	2119792-2	-	2119641-1	-	2063440-1
					SERVO LATCH PLATE	2119951-1	1901697-1	8-2150102-5	-	-	2168400-7 (QUANTITY 2)
					SMART APPLICATOR	2161326-1	-	8-2150102-4	-	-	-
	2150102-2	A	FINE CRIMP HEIGHT ADJUST	PNEUMATIC	MECHANICAL FEED	2119949-1	2063961-1	5-18022-5	2119653-1	-	-
					SERVO LATCH PLATE	2119951-1	1901697-1	8-2150102-5	-	-	2168400-7 (QUANTITY 2)
					SMART APPLICATOR	2161326-1	-	8-2150102-4	-	-	-
	2150102-5	A	FINE CRIMP HEIGHT ADJUST	SERVO LATCH PLATE <sup>4</sup>	MECHANICAL FEED	2119949-1	2063961-1	5-18022-5	2119653-1	-	-
					PNEUMATIC FEED	2119950-1	2119792-2	-	2119641-1	-	2063440-1
	2150102-6	A	NON-CRIMP HEIGHT ADJUST	SERVO LATCH PLATE <sup>4</sup>	SERVO LATCH PLATE <sup>12</sup>	-	-	-	-	-	-
	2150102-7	A	FINE CRIMP HEIGHT ADJUST	NONE	-	-	-	-	-	-	-
	7-2150102-7	A	CRIMP TOOLING KIT	-	-	-	-	-	-	-	-

APPLICATOR DATA		
CRIMP	SIZE	TYPE
WIRE	.120 [3.05 mm]	F
INSUL	.100 [2.54 mm]	-
APPL INSTRUCTIONS 408-10390		

TERMINAL DATA: TE TERMINAL		TE CRIMP SPECIFICATION	
TERMINAL NAME: SPLICE			
WIRE STRIP LENGTH		INSULATION DIAMETER RANGE	
.165-.205 IN [4.19-5.21 mm]		∅	-
TERMINAL APPLICATION SPECIFICATION	114-2088		-
TERMINALS APPLIED			
TE TERMINAL	TE TERMINAL	TE TERMINAL	TE TERMINAL
60932-2	60932-4	62776-1	

WIRE SIZE	CRIMP HEIGHT mm [INCH]	CRIMP HEIGHT REFERENCE SETTING
14 AWG	1.94 +/- 0.000 [0.076 +/- .000]	5.5
16 AWG	1.73 +/- 0.000 [0.068 +/- .000]	7.8
18 AWG	1.57 +/- 0.000 [0.062 +/- .000]	9.7

- <sup>1</sup> RECOMMENDED SPARE PARTS
- <sup>2</sup> GREASE BEARING SURFACES LIGHTLY
- 3. LUBRICATE DAILY PER THE APPLICATOR INSTRUCTION SHEET SUPPLIED WITH THE APPLICATOR.
- <sup>4</sup> APPLICATOR SPECIFIC DATA TO BE ENTERED INTO BLANK MEMORY CHIP AT ASSEMBLY. SEE BELOW FOR PART NUMBER:  
 MECHANICAL FEED WITH "SMART APPLICATOR" CONVERSION: 8-2150102-4  
 PNEUMATIC FEED WITH "SMART APPLICATOR" CONVERSION: 8-2150102-4  
 SERVO FEED WITH "FINE CRIMP HEIGHT ADJUST": 8-2150102-5  
 SERVO FEED WITH "NON-CRIMP HEIGHT ADJUST": 8-2150102-6
- 5. ADJUSTMENT OF THE STRIPPER MAY BE REQUIRED WHEN MOVING THE APPLICATOR BETWEEN BENCH AND LEADMAKER APPLICATIONS.
- <sup>6</sup> APPLY PART NUMBER 1-23419-5 LOCTITE TO THREADS OF ITEMS 62. FOR -6 ONLY APPLY PART NUMBER 1-23419-5 LOCTITE TO THREADS OF ITEM 37.
- <sup>7</sup> GREASE THREADS, GROOVE AND O-RING ON ITEMS 35 & 252.
- <sup>8</sup> MAGNET, ITEM 166 MUST BE ORIENTED CORRECTLY IN ORDER TO PROPERLY ACTUATE THE COUNTER.
- <sup>9</sup> CRIMP HEIGHT REFERENCE SETTING WAS THE SETTING USED WHEN THE APPLICATOR WAS QUALIFIED AT THE FACTORY. ADJUSTMENT MAY BE NECESSARY WHEN RUNNING APPLICATOR IN THE FIELD.
- <sup>10</sup> SPARE FEED CAM STORAGE LOCATION REFER TO INSTRUCTION SHEET FOR ADDITIONAL INFORMATION.
- <sup>11</sup> THE RECOMMENDED SET-UP FOR END FEED APPLICATORS IS POST-FEED WITH ITEM 2119653-1. THE APPLICATOR CAN BE CONFIGURED FOR PRE-FEED WITH ITEM 2119652-1 BUT MAY ENCOUNTER PROBLEMS WITH SOME APPLICATIONS. FEED ISSUES OR TERMINAL JAMMING MAY OCCUR IN THE PRE-FEED CONFIGURATION.
- <sup>12</sup> WHEN ASSEMBLING -6 NON-CRIMP HEIGHT ADJUST APPLICATOR USE SHIM PACK 2119957-2 TO ALIGN APPLICATOR'S MAXIMUM WIRE CRIMP HEIGHT AT NORMAL TERMINATOR SHUT HEIGHT
- <sup>13</sup> TERMINAL LUBRICANT IS RECOMMENDED.

**\*WARNING**  
 ON INSTALLATION, SET WIRE DISC, ITEM 40 TO LARGEST WIRE SIZE SETTING. USE OF SETTINGS BELOW MINIMUM REQUIRED CRIMP HEIGHT SETTING WILL CAUSE DAMAGE TO CRIMP TOOLING.

SET UP GAUGE	LOC	DIST	REVISIONS				
2119599-2	A	66	P LTM	DESCRIPTION	DATE	OWN	APVD
			A1	ECR-15-006047	10JUN2015	MR	TE

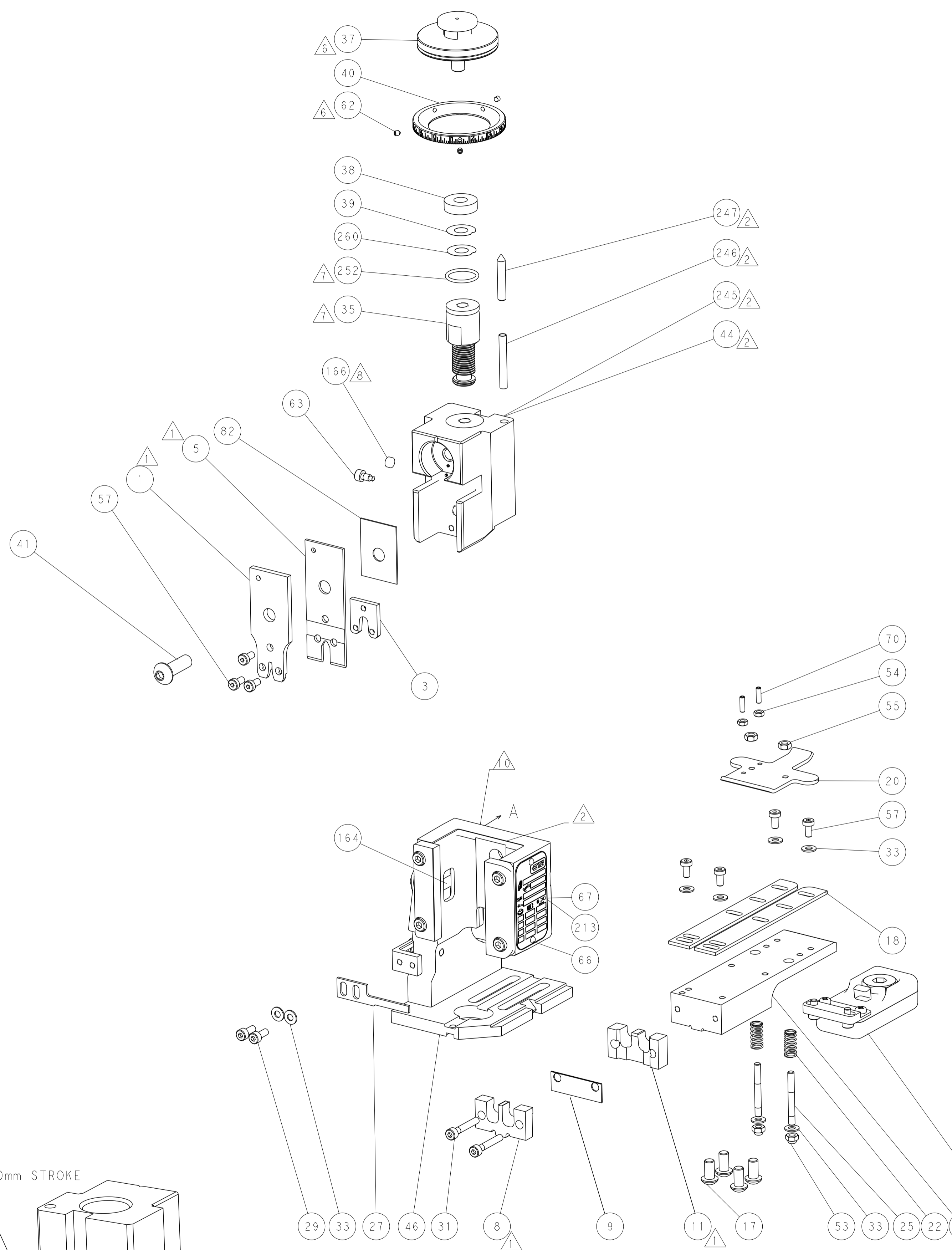
-	3	3	3	3	3	2168400-4	SHCS, LOW HEAD, RoHS, M4 X 8	264
-	-	1	-	-	-	2119957-2	APPLICATOR SHIM PACK	260
-	1	-	1	1	1	8-21084-0	O-RING, .676 ID, .070 DIA. MAT.	252
-	-	-	-	1	-	2119640-1	PUSH ROD, AIR FEED	250
-	-	-	-	1	-	2079988-1	BUSHING, LCH5-12, MISUMI	249
-	-	-	-	1	-	2119641-1	FEED CAM, AIR FEED	248
-	1	-	1	1	1	2119798-1	DETENT PIN	247
-	1	-	1	1	1	1-22279-3	SPRING, COMPRESSION	246
-	-	1	-	-	-	2161315-1	RAM, STEPPED, AMP STYL, EF, NON-ADJUST	245
-	-	2	2	-	-	2168400-7	SHCS, LOW HEAD, RoHS, M5 X 10	240
-	-	-	-	-	1	2119580-1	MECHANICAL FEED ASSEMBLY	239
-	-	-	-	1	-	2063440-1	AIR FEED MODULE	238
-	-	1	1	-	-	2119740-2	TAG, IDENTIFICATION	213
-	-	REFREF	-	-	-	1901697-1	FEED FINGER ASSEMBLY, EF	183
-	-	-	-	2	-	21045-3	RING, RETAIN, EXTERN, 3/16 CRESCENT	172
-	1	1	1	1	1	994969-1	MAGNET, RARE EARTH HIGH ENERGY	166
-	REFREF	REFREF	REFREF	REFREF	REFREF	994970-2	COUNTER, MAGNETIC	164
-	-	-	-	1	-	240638-1	SPRING, FEED FINGER	163
-	-	-	-	1	-	3-23627-7	PIN, RETAIN, GRVD, 3/16 X .854	137
-	-	REFREF	-	-	-	SEE NOTE 4	MEMORY CHIP, PROGRAMMED	135
-	-	1	1	-	-	1633743-1	SERVO FEED LATCH ASM	133
<sup>13</sup>	-	1	1	1	1	2119955-2	ASSY, LUBRICATOR, END FEED	84
-	1	1	1	1	1	455888-7	SPACER, CRIMPER	82
-	1	1	1	1	1	2119956-2	DOCUMENTATION PACKAGE	71
-	2	2	2	2	2	2-18032-2	SCR, SET, FLT POINT M3 X 10.0	70
-	1	-	-	1	1	2119740-1	TAG, IDENTIFICATION	67
-	2	2	2	2	2	2168078-1	SCREW, DRIVE, RH, RoHS, 2 x .188	66
-	1	-	1	1	1	2119793-1	LIMITER, ADJUSTMENT BOLT	63
<sup>6</sup>	-	3	-	3	3	992763-5	SCR, SET, SOC, CONE POINT, M3 X 4.0	62
-	-	-	-	-	1	5-18022-5	SCR, HEX HD CAP, M4 X 6.0	59
-	-	-	-	-	1	2063961-1	FEED FINGER	58
-	4	4	4	4	4	2168400-4	SHCS, LOW HEAD, RoHS, M4 X 8	57
-	2	2	2	2	2	5018030-2	NUT, HEX, REG, RoHS, M4	55
-	2	2	2	2	2	5018030-1	NUT, HEX, REG, RoHS, M3	54
-	2	2	2	2	2	986965-8	NUT, LOCK, HEX, TORQUE (M4)	53
-	-	-	-	1	-	2119792-2	PAWL, EF, AIR	51
-	-	-	-	1	2	18023-9	SCR, SKT HD CAP M4 X 6.0	49
-	-	-	-	-	1	2119652-1	FEED CAM, PRE FEED	48
-	-	-	-	-	1	2119653-1	FEED CAM, POST FEED	47
-	1	1	1	1	1	2119655-5	APPLICATOR BASIC ASSEMBLY, EF	46
-	1	-	1	1	1	2161310-1	RAM, STEPPED, AMP STYLE, END FEED	44
-	1	1	1	1	1	2079383-7	SCR, BHSC, RoHS (M8 X 25)	41
-	1	-	1	1	1	2119645-1	DISC, NUMBERED FA WIRE ADJUSTMENT	40
-	1	-	1	1	1	2119957-1	APPLICATOR SHIM PACK	39
-	1	1	1	1	1	2119644-1	RAM WASHER, PRECISION	38
<sup>6</sup>	-	1	1	1	1	2119085-1	FA HEAD, ATLANTIC STYLE	37
-	1	-	1	1	1	2119092-1	BOLT, ADJUSTMENT	35
-	8	8	8	8	8	1-18028-2	WASHER, FLAT, REG M4	33
-	2	2	2	2	2	1-2168083-2	SCR, SKT HD CAP, RoHS, M4 X 25	31
-	2	2	2	2	2	1-2168083-0	SCR, SKT HD CAP, RoHS, M4 X 10	29
-	1	1	1	1	1	690455-2	STRIPPER, FRONT CASTING	27
-	2	2	2	2	2	1320906-1	STUD, THREADED	25
-	1	1	1	1	1	1752371-5	PLATE, STRIP GUIDE	24
-	2	2	2	2	2	2-22281-3	SPRING, COMPRESSION	22
-	1	1	1	1	1	1752373-4	DRAG	20
-	2	2	2	2	2	1901259-4	GUIDE, LOWER STRIP	18
-	4	4	4	4	4	1-2079383-1	SCR, BHSC, RoHS (M6 X 12)	17
<sup>1</sup>	-	1	1	1	1	679860-2	PLATE, REAR SHEAR	11
-	-	-	-	-	-	-	-	10
-	1	1	1	1	1	690619-5	PLATE, RETAINING	9
<sup>1</sup>	1	1	1	1	1	1803131-2	ANVIL, SPLICE TYPE	8
-	-	-	-	-	-	-	-	6
<sup>1</sup>	-	1	1	1	1	679858-2	BLADE, SHEAR	5
-	-	-	-	-	-	-	-	4
-	1	1	1	1	1	679864-2	PLATE, TOOLING	3
-	-	-	-	-	-	-	-	2
<sup>1</sup>	1	1	1	1	1	679857-2	WIRE CRIMPER "F"	1

**ATLANTIC VERSION**  
 Shown on sheets 1 of 4 & 2 of 4  
 (Pacific version shown on sheets 3 of 4 & 4 of 4)

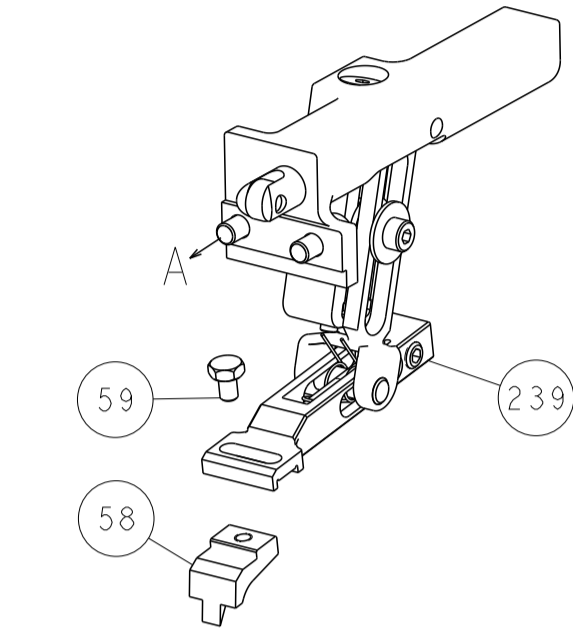
DIMENSIONS:		TOLERANCES UNLESS OTHERWISE SPECIFIED:		MATERIAL:		FINISH:	
mm	0 PLC ±0.5	1 PLC ±0.13	2 PLC ±0.013	3 PLC ±0.001	ANGLES	±0.0001	

CHK	STAKEM	9OCT2013	TE Connectivity Harrisburg, PA 17105-3608
CHK	G. BAILEY	9OCT2013	
APVD	T. ELBIN	9OCT2013	
NAME			Ocean End Feed Applicator
SIZE			A1
CAGE CODE			00779
DRAWING NO			2150102
RESTRICTED TO			-
Customer Accessible Production Drawing			SCALE 1:1 SHEET 1 OF 4 REV A1

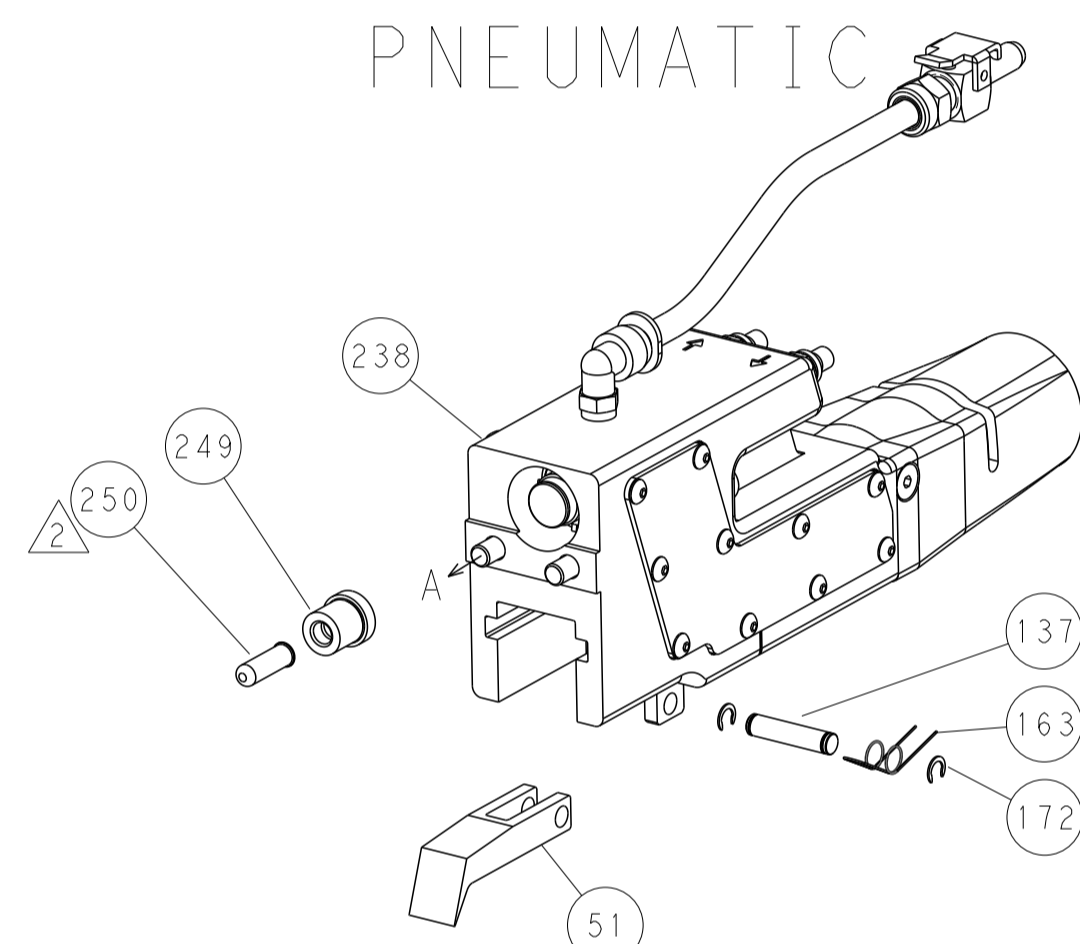
LOC	DIST	REV	DESCRIPTION	DATE	OWN	APVD
A	66		SEE SHEET 1			



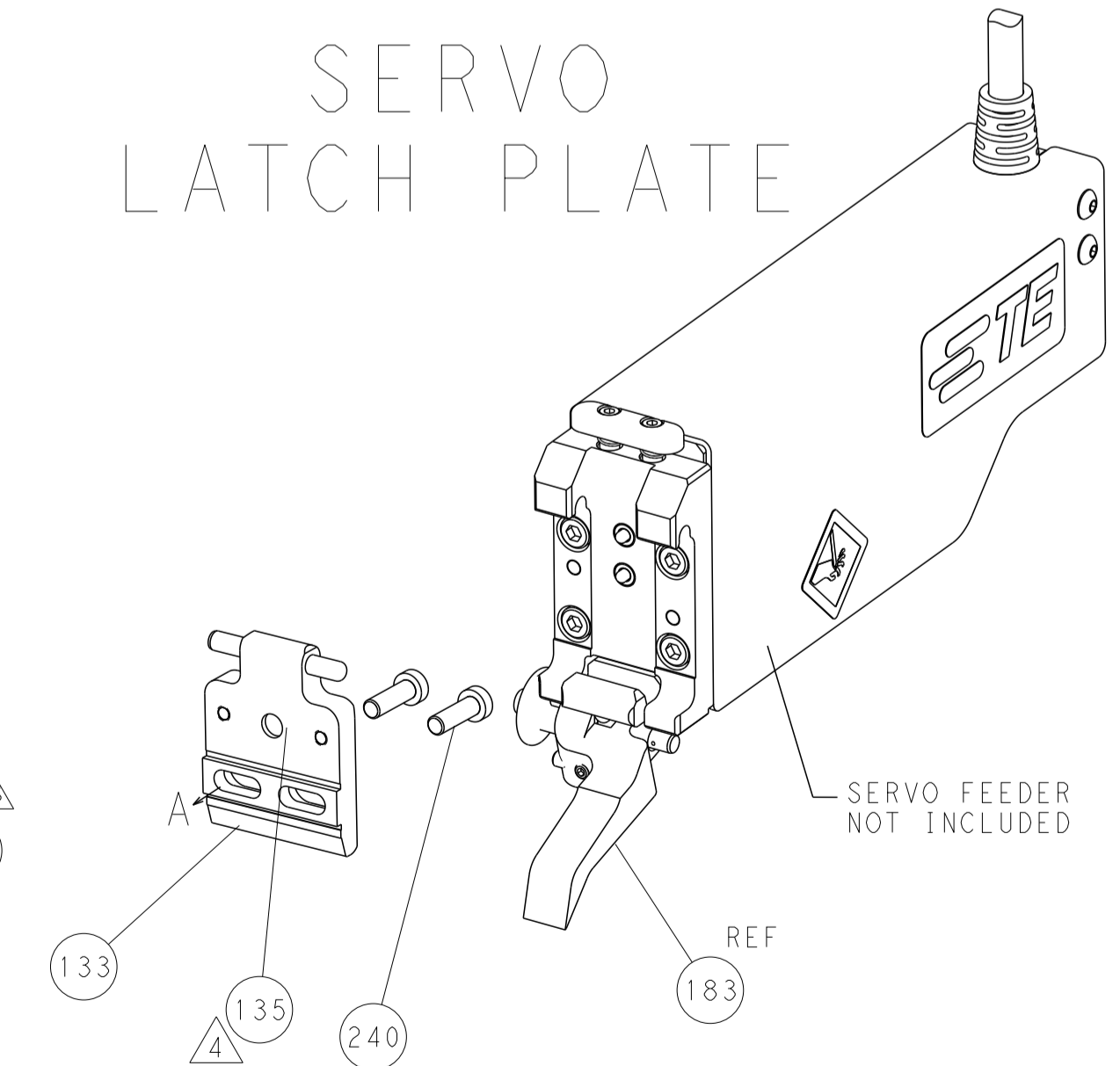
### FEED TYPE MECHANICAL



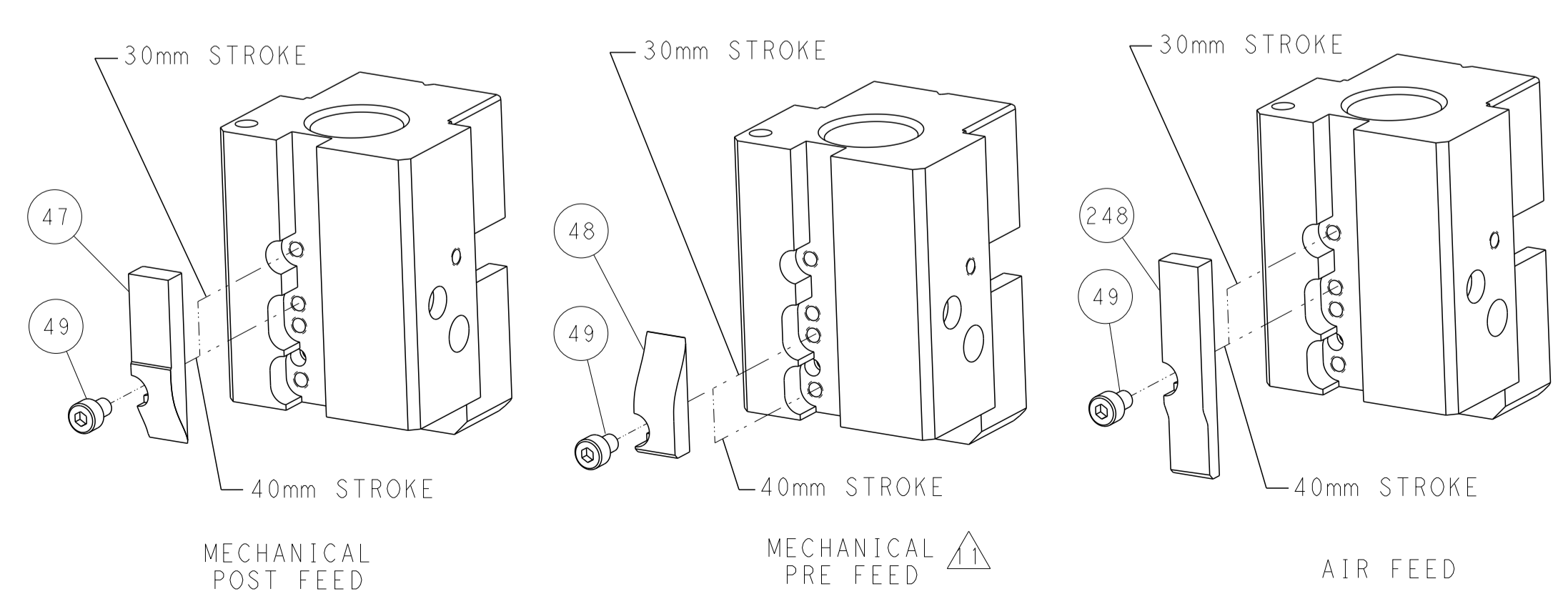
### PNEUMATIC



### SERVO LATCH PLATE



### CAM POSITIONS



**ATLANTIC VERSION**  
 Shown on sheets 1 of 4 & 2 of 4  
 (Pacific version shown on sheets 3 of 4 & 4 of 4)

DIMENSIONS: mm 		TOLERANCES UNLESS OTHERWISE SPECIFIED: 0 PLC ±.5 1 PLC ±0.13 2 PLC ±0.13 3 PLC ±0.013 4 PLC ±0.0013 ANGLES ±.0001 FINISH		DWG: K. STANEM 9OCT2013 CHK: G. BAILEY 9OCT2013 APVD: T. ELRLIN 9OCT2013 PRODUCT SPEC APPLICATION SPEC WEIGHT SCALE: 1:1		NAME: Ocean End Feed Applicator SIZE: A1 CAGE CODE: 00779 DRAWING NO: C=2150102 SHEET 2 OF 4 REV A1	
MATERIAL:				RESTRICTED TO:			

PACIFIC VERSION TERMINATOR INTERFACE ADAPTER	PART NUMBER	REVISION	DESCRIPTION	FEED TYPE	APPLICATOR STYLE CONVERSION CHART						
					CONVERT TO	PART NUMBERS REQUIRED					
	2-2150102-1	A	FINE CRIMP HEIGHT ADJUST	MECHANICAL	PNEUMATIC FEED	2119950-1	2119792-2	-	2119641-2	-	2063440-1
					SERVO LATCH PLATE	2119951-1	1901697-1	8-2150102-5	-	-	2168400-7 (QUANTITY 2)
					SMART APPLICATOR	2161326-1	-	8-2150102-4	-	-	-
	2-2150102-2	A	FINE CRIMP HEIGHT ADJUST	PNEUMATIC	MECHANICAL FEED	2119949-1	2063961-1	5-18022-5	2119653-2	-	-
					SERVO LATCH PLATE	2119951-1	1901697-1	8-2150102-5	-	-	2168400-7 (QUANTITY 2)
					SMART APPLICATOR	2161326-1	-	8-2150102-4	-	-	-
	2-2150102-5	A	FINE CRIMP HEIGHT ADJUST	SERVO LATCH PLATE <sup>4</sup>	MECHANICAL FEED	2119949-1	2063961-1	5-18022-5	2119653-2	-	-
					PNEUMATIC FEED	2119950-1	2119792-2	-	2119641-2	-	2063440-1
	2-2150102-7	A	FINE CRIMP HEIGHT ADJUST	NONE	-	-	-	-	-	-	-
	7-2150102-7	A	CRIMP TOOLING KIT	-	-	-	-	-	-	-	-

APPLICATOR DATA		
CRIMP	SIZE	TYPE
WIRE	.120 [3.05 mm]	F
INSUL	.100 [2.54 mm]	-
APPL INSTRUCTIONS 408-10390		

TERMINAL DATA: TE TERMINAL		TE CRIMP SPECIFICATION
TERMINAL NAME: SPLICE		
WIRE STRIP LENGTH		INSULATION DIAMETER RANGE
.165-.205 IN [4.19-5.21 mm]		∅ -
TERMINAL APPLICATION SPECIFICATION	114-2088	-
TERMINALS APPLIED		
TE TERMINAL	TE TERMINAL	TE TERMINAL
60932-2	60932-4	62776-1

WIRE SIZE	CRIMP HEIGHT mm [INCH]	CRIMP HEIGHT REFERENCE SETTING <sup>9</sup>
14 AWG	1.94 +/- 0.000 [.076 +/- .000]	5.5
16 AWG	1.73 +/- 0.000 [.068 +/- .000]	7.8
18 AWG	1.57 +/- 0.000 [.062 +/- .000]	9.7

- RECOMMENDED SPARE PARTS
- GREASE BEARING SURFACES LIGHTLY
- 3. LUBRICATE DAILY PER THE APPLICATOR INSTRUCTION SHEET SUPPLIED WITH THE APPLICATOR.
- APPLICATOR SPECIFIC DATA TO BE ENTERED INTO BLANK MEMORY CHIP AT ASSEMBLY. SEE BELOW FOR PART NUMBER:  
 MECHANICAL FEED WITH "SMART APPLICATOR" CONVERSION: 8-2150102-4  
 PNEUMATIC FEED WITH "SMART APPLICATOR" CONVERSION: 8-2150102-4  
 SERVO FEED WITH "FINE CRIMP HEIGHT ADJUST": 8-2150102-5
- 5. ADJUSTMENT OF THE STRIPPER MAY BE REQUIRED WHEN MOVING THE APPLICATOR BETWEEN BENCH AND LEADMAKER APPLICATIONS.
- APPLY PART NUMBER 1-23419-5 LOCTITE TO THREADS OF ITEMS 62.
- GREASE THREADS, GROOVE AND O-RING ON ITEMS 139 & 153.
- MAGNET, ITEM 166 MUST BE ORIENTED CORRECTLY IN ORDER TO PROPERLY ACTUATE THE COUNTER.
- CRIMP HEIGHT REFERENCE SETTING WAS THE SETTING USED WHEN THE APPLICATOR WAS QUALIFIED AT THE FACTORY. ADJUSTMENT MAY BE NECESSARY WHEN RUNNING APPLICATOR IN THE FIELD.
- SPARE FEED CAM STORAGE LOCATION REFER TO INSTRUCTION SHEET FOR ADDITIONAL INFORMATION.
- THE RECOMMENDED SET-UP FOR END FEED APPLICATORS IS POST-FEED WITH ITEM 2119653-1. THE APPLICATOR CAN BE CONFIGURED FOR PRE-FEED WITH ITEM 2119652-1 BUT MAY ENCOUNTER PROBLEMS WITH SOME APPLICATIONS. FEED ISSUES OR TERMINAL JAMMING MAY OCCUR IN THE PRE-FEED CONFIGURATION.
- TERMINAL LUBRICATOR IS RECOMMENDED.

**\*WARNING**  
 ON INSTALLATION, SET WIRE DISC, ITEM 40 TO LARGEST WIRE SIZE SETTING. USE OF SETTINGS BELOW MINIMUM REQUIRED CRIMP HEIGHT SETTING WILL CAUSE DAMAGE TO CRIMP TOOLING.

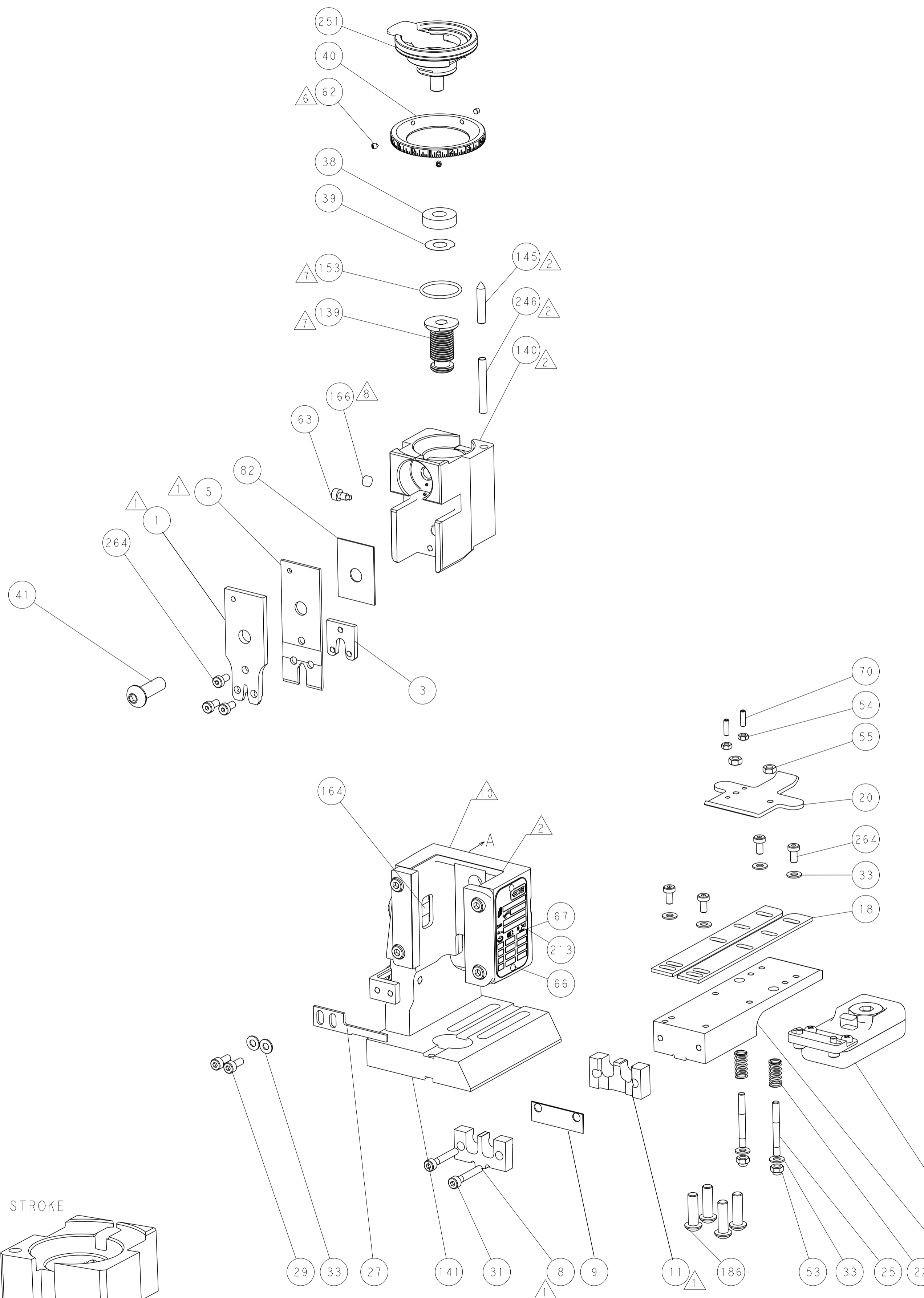
PACIFIC VERSION  
 Shown on sheets 3 of 4 & 4 of 4  
 (Atlantic version shown on sheets 1 of 4 & 2 of 4)

SET UP GAUGE	LOC	DIST	REVISIONS					
2119599-2	A	66	P	LYN	DESCRIPTION	DATE	OWN	APVD
			-	-	SEE SHEET 1	-	-	-

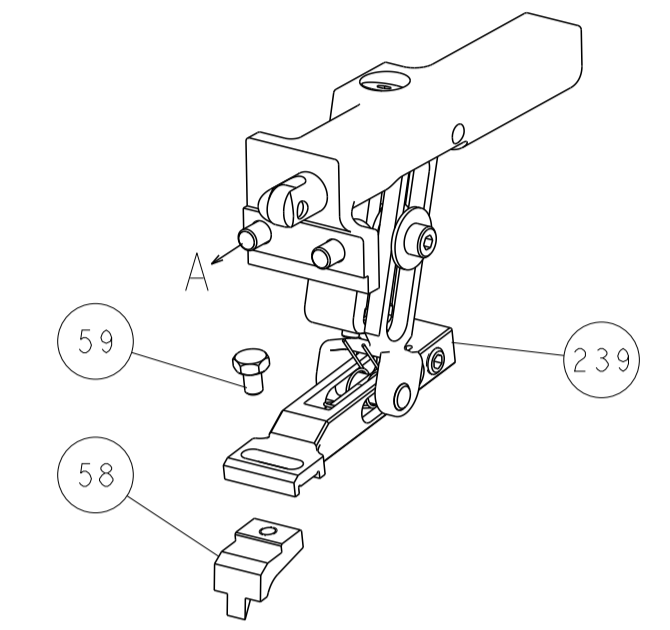
-	3	3	3	3	2168400-4	SHCS, LOW HEAD, RoHS, M4 X 8	26.4
-	1	1	1	1	2119782-1	FINE ADJUST HEAD ASM, PACIFIC STYLE	25.1
-	-	-	1	-	2119640-1	PUSH ROD, AIR FEED	25.0
-	-	-	1	-	2079988-1	BUSHING, LCH5-12, MISUMI	24.9
-	1	1	1	1	1-22279-3	SPRING, COMPRESSION	24.6
-	-	2	-	-	2168400-7	SHCS, LOW HEAD, RoHS, M5 X 10	24.0
-	-	-	-	1	2119580-1	MECHANICAL FEED ASSEMBLY	23.9
-	-	-	1	-	2063440-1	AIR FEED MODULE	23.8
-	-	1	-	-	2119740-2	TAG, IDENTIFICATION	21.3
-	4	4	4	4	2079383-9	SCR, BHSC, RoHS (M6 X 20)	18.6
-	-	REF	-	-	1901697-1	FEED FINGER ASSEMBLY, EF	18.3
-	-	-	2	-	21045-3	RING, RETAIN, EXTERN, 3/16 CRESCENT	17.2
-	1	1	1	1	994969-1	MAGNET, RARE EARTH HIGH ENERGY	16.6
-	REF	REF	REF	REF	994970-2	COUNTER, MAGNETIC	16.4
-	-	-	1	-	240638-1	SPRING, FEED FINGER	16.3
-	1	1	1	1	8-21084-1	O-RING, .801 ID, .070 DIA. MAT.	15.3
-	-	-	1	-	2119641-2	FEED CAM, AIR FEED	15.2
-	1	1	1	1	2119798-2	DETENT PIN	14.5
-	-	-	-	1	2119653-2	FEED CAM, POST FEED	14.2
-	1	1	1	1	2119655-6	APPLICATOR BASIC ASSEMBLY, EF	14.1
-	1	1	1	1	2161313-1	RAM, STEPPED, ASIAN STYLE, END FEED	14.0
-	1	1	1	1	2119092-2	BOLT, ADJUSTMENT	13.9
-	-	-	1	-	3-23627-7	PIN, RETAIN, GRVD, 3/16 X .854	13.7
-	-	REF	-	-	SEE NOTE 4	MEMORY CHIP, PROGRAMMED	13.5
-	-	1	-	-	1633743-1	SERVO FEED LATCH ASM	13.3
-	1	1	1	1	2119955-2	ASSY, LUBRICATOR, END FEED	8.4
-	1	1	1	1	455888-7	SPACER, CRIMPER	8.2
-	1	1	1	1	2119956-2	DOCUMENTATION PACKAGE	7.1
-	2	2	2	2	2-18032-2	SCR, SET, FLT POINT M3 X 10.0	7.0
-	1	-	1	1	2119740-1	TAG, IDENTIFICATION	6.7
-	2	2	2	2	2168078-1	SCREW, DRIVE, RH, RoHS, 2 x .188	6.6
-	1	1	1	1	2119793-1	LIMITER, ADJUSTMENT BOLT	6.3
-	3	3	3	3	992763-5	SCR, SET, SOC, CONE POINT, M3 X 4.0	6.2
-	-	-	-	1	5-18022-5	SCR, HEX HD CAP, M4 X 6.0	5.9
-	-	-	-	1	2063961-1	FEED FINGER	5.8
-	4	4	4	4	2168400-4	SHCS, LOW HEAD, RoHS, M4 X 8	5.7
-	2	2	2	2	5018030-2	NUT, HEX, REG, RoHS, M4	5.5
-	2	2	2	2	5018030-1	NUT, HEX, REG, RoHS, M3	5.4
-	2	2	2	2	986965-8	NUT, LOCK, HEX, TORQUE (M4)	5.3
-	-	-	1	-	2119792-2	PAWL, EF, AIR	5.1
-	-	-	1	2	18023-9	SCR, SKT HD CAP M4 X 6.0	4.9
-	-	-	-	1	2119652-1	FEED CAM, PRE FEED	4.8
-	1	1	1	1	2079383-7	SCR, BHSC, RoHS (M8 X 25)	4.1
-	1	1	1	1	2119645-1	DISC, NUMBERED FA WIRE ADJUSTMENT	4.0
-	1	1	1	1	2119957-1	APPLICATOR SHIM PACK	3.9
-	1	1	1	1	2119644-1	RAM WASHER, PRECISION	3.8
-	8	8	8	8	1-18028-2	WASHER, FLAT, REG M4	3.3
-	2	2	2	2	1-2168083-2	SCR, SKT HD CAP, RoHS, M4 X 25	3.1
-	2	2	2	2	1-2168083-0	SCR, SKT HD CAP, RoHS, M4 X 10	2.9
-	1	1	1	1	690455-2	STRIPPER, FRONT CASTING	2.7
-	2	2	2	2	1320906-1	STUD, THREADED	2.5
-	1	1	1	1	1752371-5	PLATE, STRIP GUIDE	2.4
-	2	2	2	2	2-22281-3	SPRING, COMPRESSION	2.2
-	1	1	1	1	1752373-4	DRAG	2.0
-	2	2	2	2	1901259-4	GUIDE, LOWER STRIP	1.8
-	1	1	1	1	679860-2	PLATE, REAR SHEAR	1.1
-	-	-	-	-	-	-	1.0
-	1	1	1	1	690619-5	PLATE, RETAINING	.9
-	1	1	1	1	1803131-2	ANVIL, SPLICE TYPE	.8
-	-	-	-	-	-	-	.6
-	1	1	1	1	679858-2	BLADE, SHEAR	.5
-	-	-	-	-	-	-	.4
-	1	1	1	1	679864-2	PLATE, TOOLING	.3
-	-	-	-	-	-	-	.2
-	1	1	1	1	679857-2	WIRE CRIMPER "F"	.1

DIMENSIONS:		TOLERANCES UNLESS OTHERWISE SPECIFIED:		DATE	CHK	APVD	NAME
mm	0 PLC ±.5	1 PLC ±.5	2 PLC ±.13	9OCT2013	STAKEM	9OCT2013	TE Connectivity
	3 PLC ±.013	4 PLC ±.0001	ANGLES ±.001		G. BAILEY		Harrisburg, PA 17105-3608
	FINISH				T. ELBIN		
MATERIAL							Ocean End Feed Applicator
							SIZE CAGE CODE DRAWING NO RESTRICTED TO
							A1 00779 C=2150102
							Customer Accessible Production Drawing SCALE 1:1 SHEET 3 OF 4 REV A1

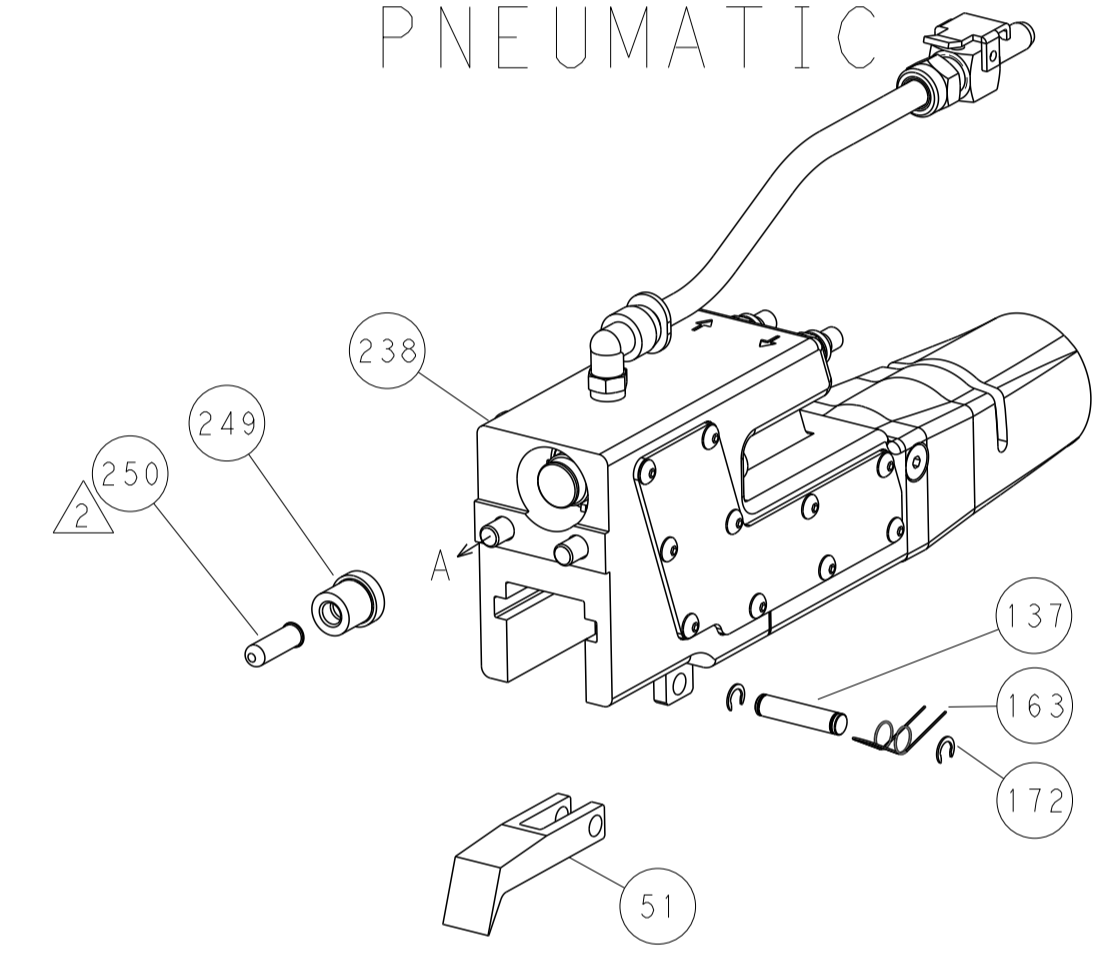
LOC		DIST		REVISIONS			
A	66	P	LTM	DESCRIPTION	DATE	OWN	APVD
		-		SEE SHEET 1			



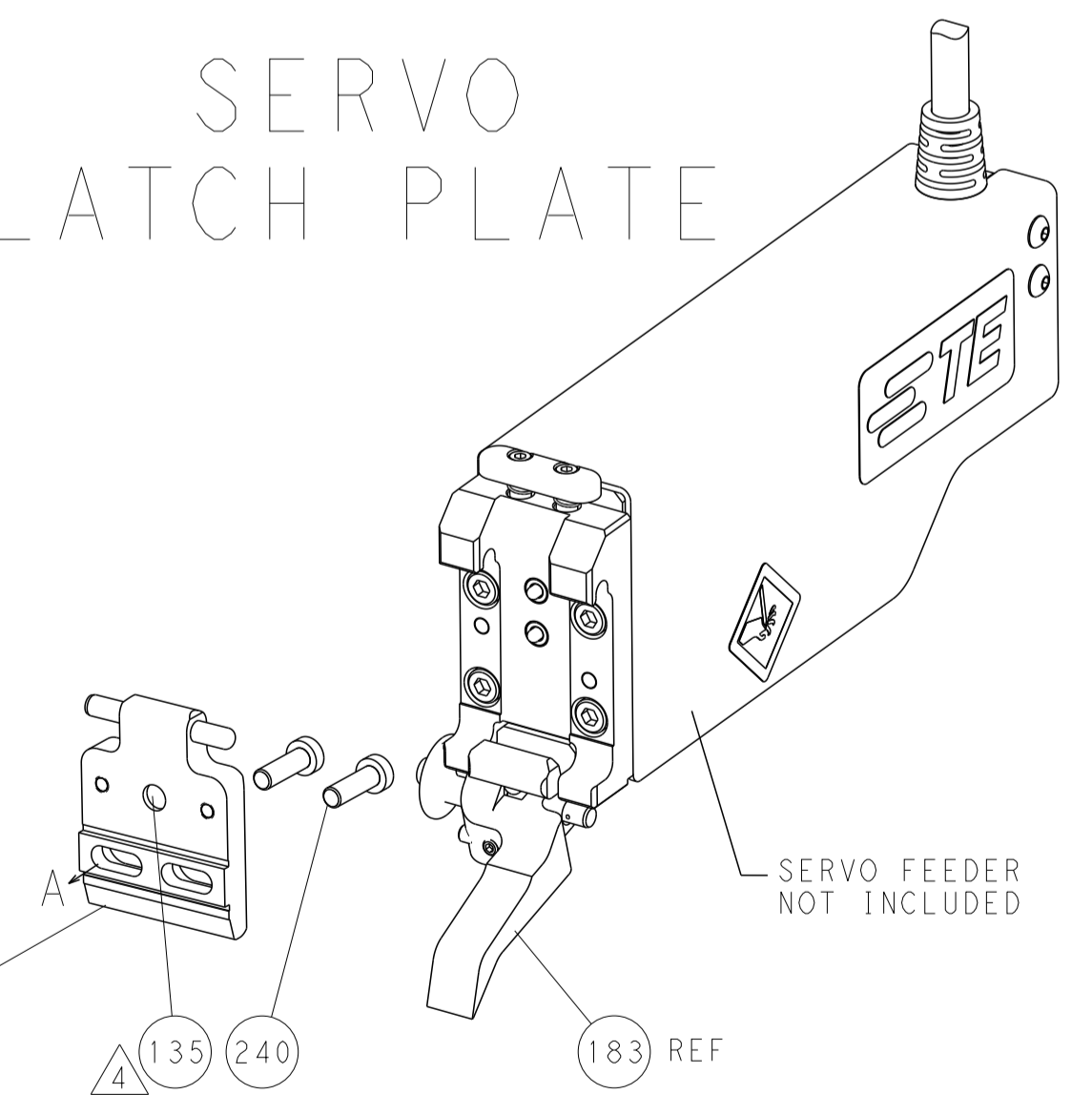
FEED TYPE  
MECHANICAL



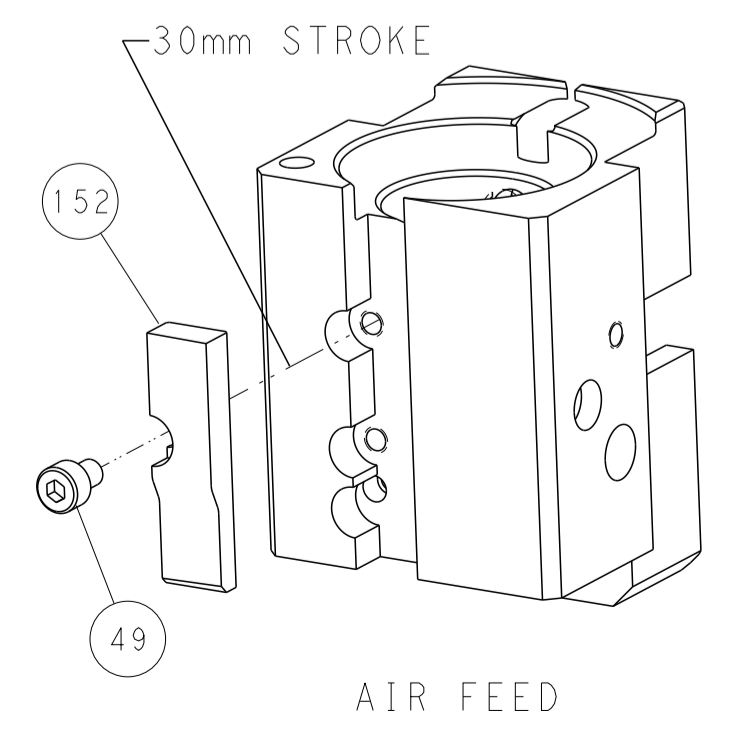
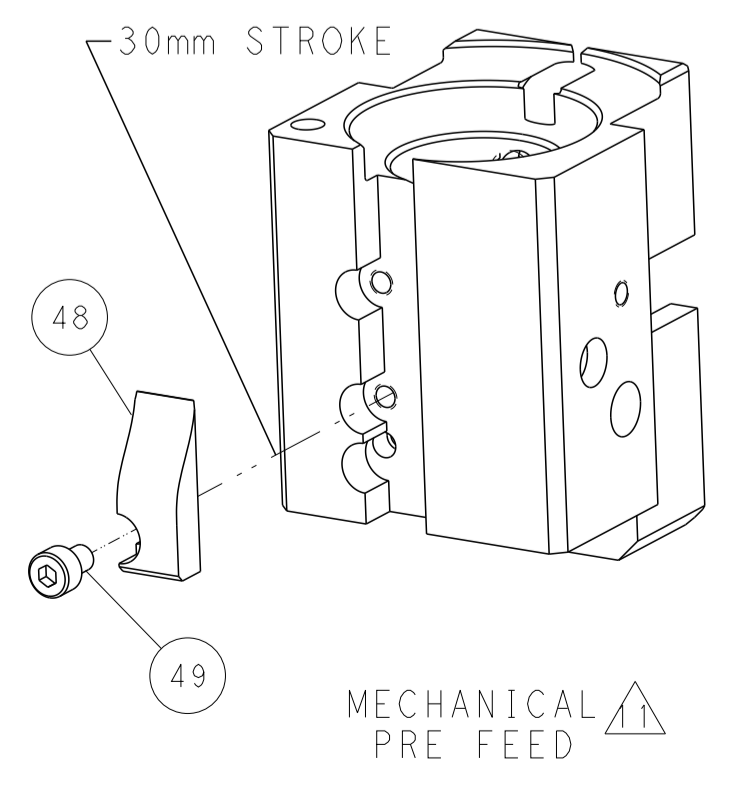
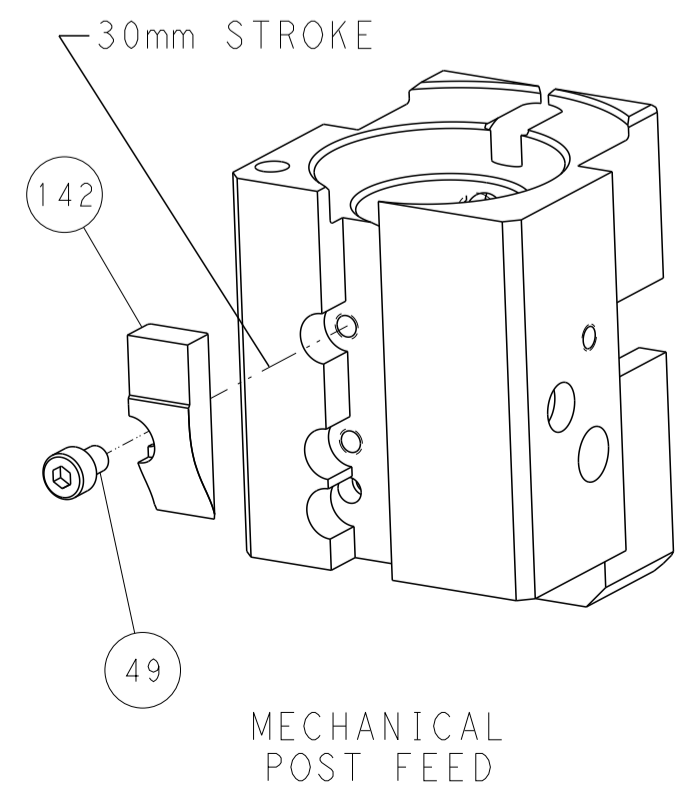
PNEUMATIC



SERVO  
LATCH PLATE



CAM POSITIONS



PACIFIC VERSION  
 Shown on sheets 3 of 4 & 4 of 4  
 (Atlantic version shown on sheets 1 of 4 & 2 of 4)

DIMENSIONS:		TOLERANCES UNLESS OTHERWISE SPECIFIED:		DWN: STANEM 9OCT2013		CHK: G. BAILEY 9OCT2013		APVD: T. ELRLIN 9OCT2013		NAME: Ocean End Feed Applicator	
mm	0 PLC ±0.5	1 PLC ±0.5	2 PLC ±0.13	3 PLC ±0.013	4 PLC ±0.001	ANGLES ±0.0001	FINISH	SIZE: A1	CAGE CODE: 00779	DRAWING NO: C-2150102	RESTRICTED TO: -
MATERIAL:		WEIGHT:		Customer Accessible Production Drawing		SCALE: 1:1	SHEET: 4	OF: 4	REV: A1	SHEETS 1 & 2 ARE NOT REQUIRED FOR PACIFIC VERSION	