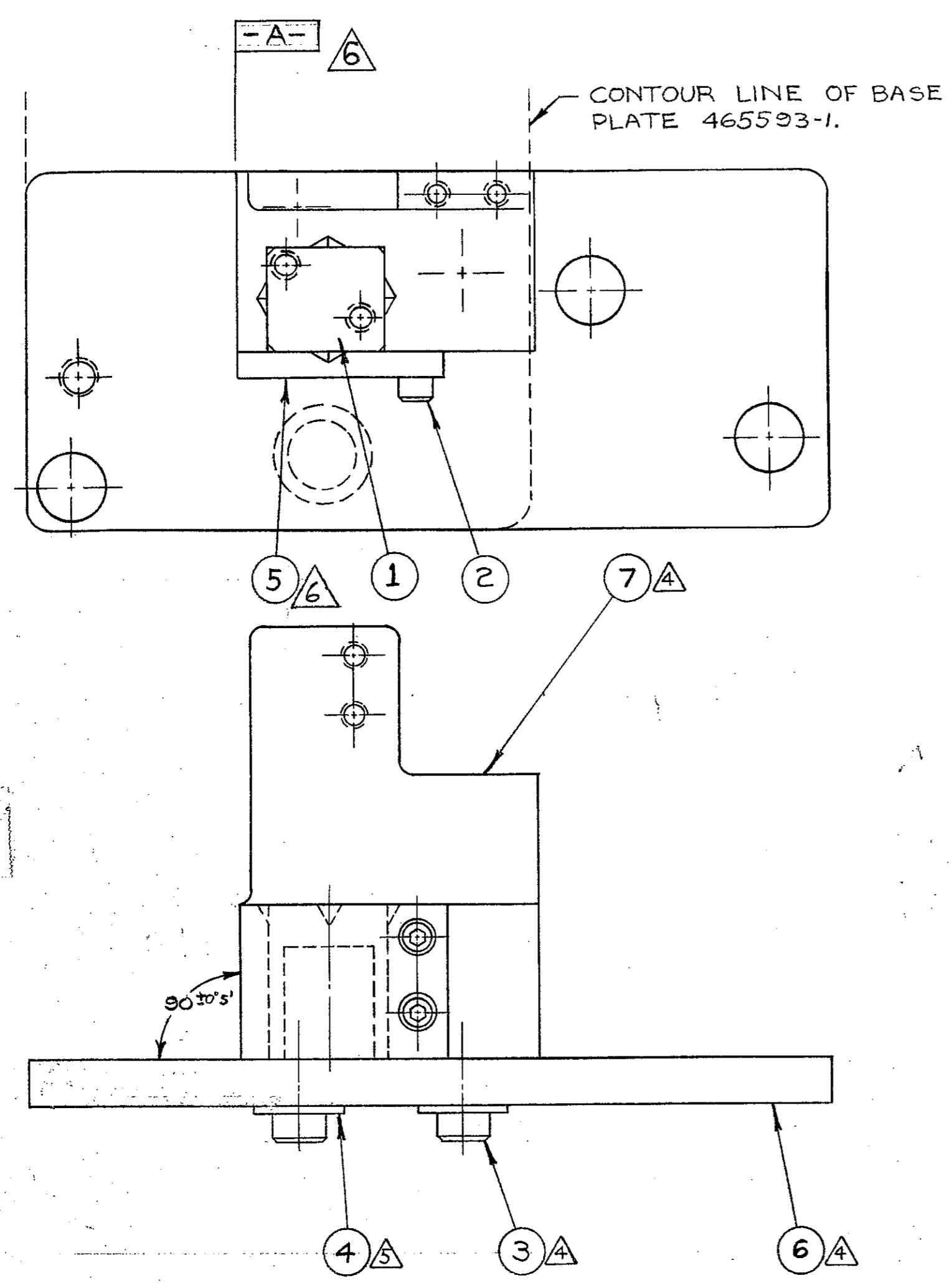


1. THESE PART TO BE ASSEMBLED BY VENDOR AND HELD WITHIN DIMENSIONS SHOWN.
2. APPLY PART NUMBER PER PROCESS SPEC. 115-67-7

3. SHOULD BE INSPECTED AND STOCKED AS A UNIT ASS'Y.
⚠️ ALIGN AND SCREW BASE BLOCK & PLATE TOGETHER.
⚠️ OMIT THIS LOCKWASHER ON -4 ASS'Y.

~~8. THICKEN AS PER 112-157 AFTER ASS'Y~~

⚠️ ITEM #5 TO BE FLUSH OR BELOW DATUM -A-



CONTOUR LINE OF BASE PLATE 465593-1.

90° to's

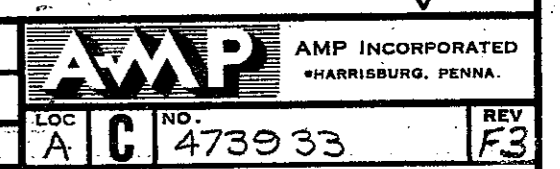
REV	DESCRIPTION	DATE
F3	0150-9331-99	5-79
F2	OBS -1 R652 A-313391	2-91
F1	OBS -1 R-292691	2-91
F	REV PER ECN A-1706BB	1-89
E3	ECN R 7496 OBS 1-1	8-81
E2	OBS PER R6522	9-85
E1	ADD -11	3-77
D	DELITE NOTE 6	7-76
D	REV & REDRAWN PER ECN	5-66
LTR	REVISION RECORD	

OBSOLETE
OBSOLETE
OBSOLETE
OBSOLETE
OBSOLETE
OBSOLETE
OBSOLETE

QTY	DESCRIPTION	ITEM NO
1	A 385282 BLOCK, BASE	7
1	A 471050 BLOCK, BASE	7
1	A 810262 PLATE, BASE	6
1	B 372987-1 PLATE, BASE	6
1	B 465593-1 PLATE, BASE	6
1	B 565096-1 PLATE, BASE	6
1	B 810702-1 PLATE, BASE	6
1	B 465135-1 PLATE, BASE	6
1	B 388964 PLATE, BASE	6
1	B 385816 PLATE, BASE	6
1	B 810269 PLATE, BASE	6
1	B 372987 PLATE, BASE	6
1	A 811057-1 RETAINER, SLIDE	5
1	A 811053-1 RETAINER, SLIDE	5
1	A 372993 RETAINER, SLIDE	5
2	BA 21024-7 WASHER, SPRING LOCK 5/16	4
2	BB 1-21001-9 SCREW, SOCK HD CAP 5/16-18 x 7/8	3
2	BB 3-21000-6 SCREW, SOCK HD CAP 10-32 x 5/8	2
1	A 373003 SLIDE	1

USED ON
 THIS INFORMATION IS CONFIDENTIAL AND IS DISCLOSED TO YOU ON CONFIDENTIALITY. IT IS NOT TO BE REPRODUCED, COPIED, OR TRANSMITTED IN ANY FORM OR BY ANY MEANS, WITHOUT WRITTEN AUTHORIZATION FROM AMP INCORPORATED, HARRISBURG, PA.
 DIMENSIONS IN INCHES. DO NOT SCALE PRINT.
 AMP 1296 REV 9/66 8

H
G
F
E
D
C
B
A



SCALE NAME
#- APPLICATOR MOUNT ASSEMBLY