

## Ring cable lug - C-RCI 10/M6 - 3240220

Please be informed that the data shown in this PDF Document is generated from our Online Catalog. Please find the complete data in the user's documentation. Our General Terms of Use for Downloads are valid (<http://phoenixcontact.com/download>)




Ring cable lug, red, 10 mm², M6

### Why buy this product

- The insulated ring cable lugs with plastic sleeve are hard-soldered and feature the 'EASY ENTRY' system
- The sleeves are conically tapered to facilitate easy and correct insertion of the conductor

### Key Commercial Data

|              |   |
|--------------|---|
| Packing unit | 50 STK  |
| GTIN         | <br>4 046356 452106 |
| GTIN         | 4046356452106   |

### Technical data

#### Dimensions

|   |         |
|---|---------|
| Length (b)  | 31.3 mm |
| Width (a)   | 11 mm   |
| Maximum stripping length                                  | 11 mm   |
| Length of insulation sleeve (c)                           | 16 mm   |
| Inner dimension of the insulating collar (d)              | 7.5 mm  |
| Distance between the center and the insulation sleeve (e) | 19.3 mm |
| Inner diameter (f)  | 6.5 mm  |
| Material thickness (g)                                    | 1.1 mm  |

#### Ambient conditions

|   |   |
|---|---|
| Ambient temperature (operation)                 | -20 °C ... 105 °C   |
| Ambient temperature (assembly)                  | -20 °C ... 100 °C   |
| Optimum ambient temperature (storage/transport) | 20 °C 50 % Humidity (RH), store inside sealed original packaging. Avoid direct sunlight and heat. |
| Short-term temperature                          | 100 °C  |

# Ring cable lug - C-RCI 10/M6 - 3240220

## Technical data

### General

|  |              |
|--|--------------|
| Color                                  | red          |
| Stripping length                       | 11 mm        |
| Components                             | halogen-free |
| Flammability rating according to UL 94 | V2           |
| Material                               | Copper       |
| Insulating material                    | PA           |
| Coating                                | tin-plated   |

### Standards and Regulations

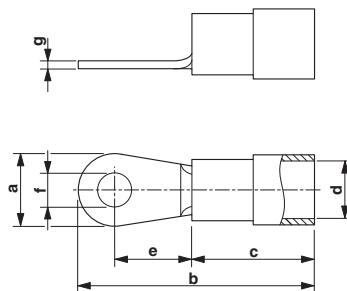
|  |              |
|--|--------------|
| Flammability rating according to UL 94 | V2           |
| Design according to standard           | JIS, UL, CSA |

### Environmental Product Compliance

|            |   |
|------------|---|
| China RoHS | Environmentally friendly use period: unlimited = EFUP-e |
|            | No hazardous substances above threshold values          |

## Drawings

Dimensional drawing



## Approvals

Approvals

---

Approvals

EAC

---

Ex Approvals

---

Approval details

## Ring cable lug - C-RCI 10/M6 - 3240220

### Approvals

EAC



EAC-Zulassung

Phoenix Contact 2018 © - all rights reserved  
<http://www.phoenixcontact.com>

PHOENIX CONTACT GmbH & Co. KG  
Flachsmarktstr. 8  
32825 Blomberg  
Germany  
Tel. +49 5235 300  
Fax +49 5235 3 41200  
<http://www.phoenixcontact.com>