

INTERCONNECTS

SERIES 714...01X • 2,54 GRID ULTRA LOW PROFILE CARRIERS • SINGLE AND DOUBLE ROW STRIPS

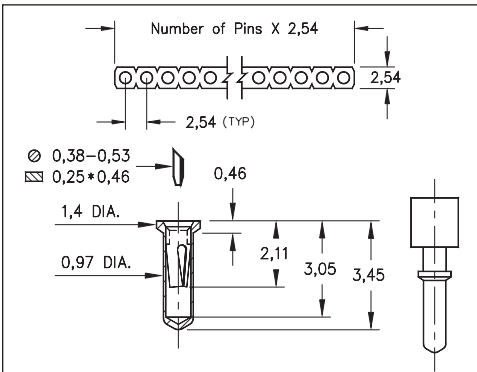


FIG. 1

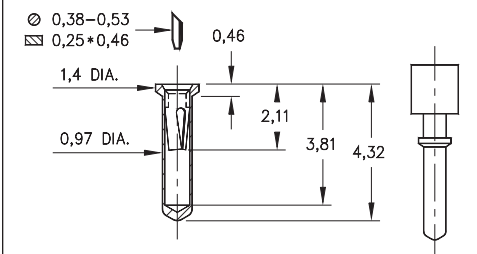


FIG. 2

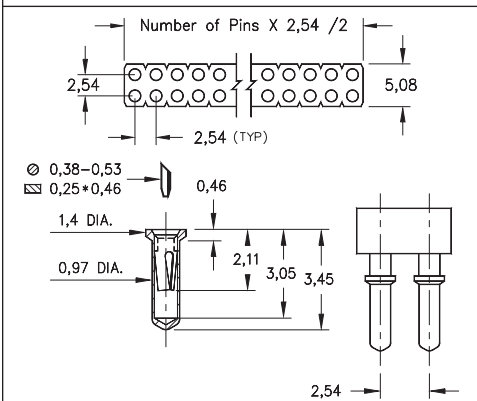


FIG. 3

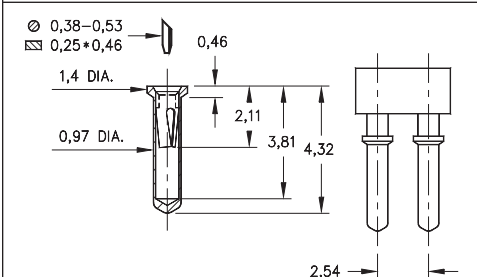
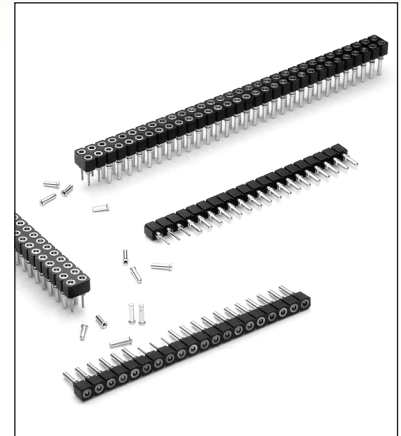


FIG. 4

- Ultra low profile receptacles sit 0,46 above the board
- Series 714 use MM #0552-1 and MM #0552-2 pin receptacles. See page 158 for details
- Hi-Rel, 3-finger BeCu #11 contact is rated at 3 amps. See page 251 for details
- Insulators are high temperature thermoplastic, suitable for all soldering operations



ORDERING INFORMATION

	Single Row (0,99 min. mounting hole)				
FIG. 1	714-XX-1__-31-012000				
	Specify number of pins			01-64	
FIG. 2	714-XX-1__-31-018000				
	Specify number of pins			01-64	
FIG. 3	Double Row (0,99 min. mounting hole)				
	714-XX-2__-31-012000				
FIG. 4	Double Row (0,99 min. mounting hole)				
	714-XX-2__-31-018000				
				XX=Plating Code See Below	
				For Electrical, Mechanical & Environmental Data, See page 264	
SPECIFY PLATING CODE XX=		91	93	41	43
Sleeve (Pin)		5,08µm Sn/Pb	5,08µm Sn/Pb	5,08µm Sn	5,08µm Sn
Contact (Clip)		0,25µm Au	0,76µm Au	0,25µm Au	0,76µm Au