

# WLAN ALARM

## FOR EA WLAN-XXX DATA LOGGER



### FEATURES

- \* ONLY WORKS WITH THE EA WLAN-XXX RANGE OF SENSORS
- \* DETECTS ALARM TRIGGERS FROM ALL EA WLAN-XXX SENSORS
- \* AUDIBLE ALARM WITH BUILT-IN SPEAKER (SPL 100dBA @1m)
- \* WORKS AT ALL TIMES INCLUDING WHEN THE PC IS TURNED OFF
- \* EASY SET-UP USING THE FREE PC SOFTWARE APPLICATION (DOWNLOADABLE FROM THE WEBSITE)
- \* WIRELESSLY CONNECT TO MULTIPLE EA WLAN-XXX SENSORS VIA WIFI
- \* OPERATING TEMPERATURE RANGE -20 TO +60°C (-4 TO +140°F)
- \* CONFIGURABLE ALERT TONES AND VOLUME
- \* AUTO MUTE
- \* SIGNAL STRENGTH INDICATOR
- \* 802.11B COMPLIANT
- \* PROTECTION RATING IP55
- \* RECHARGEABLE INTERNAL LITHIUM POLYMER BATTERY FOR DEVICE POSITIONING AND LIMITED POWER DURING MAINS FAILURE
- \* FIRMWARE UPGRADABLE VIA USB (DOWNLOADABLE FROM THE WEBSITE)
- \* SUPPLIED WITH WALL BRACKET, MICRO USB LEAD AND MAINS CHARGER
- \* SUPPORTED SECURITY PROTOCOLS WEP, WPA/WPA2 - PSK

### ORDERING CODE

MONITOR AND ALARM FOR WIFI-WLAN SENSORS

**EA WLAN-ALARM**

## GENERAL

The EA WLAN-ALARM-Alert is a standalone monitoring system for all the sensors in the EA WLAN-xxx range. The Alert will pick up alarm messages from any EA WLAN-xxx sensor within WiFi range. It displays Red LED lights (through a Red translucent rear moulding) and sounds when a sensor alarm has been triggered (there are nine standard sounds to choose from). Alarm messages are streamed wirelessly over any WiFi network and can be viewed on a PC using free software package or on the EA WLAN-Cloud.

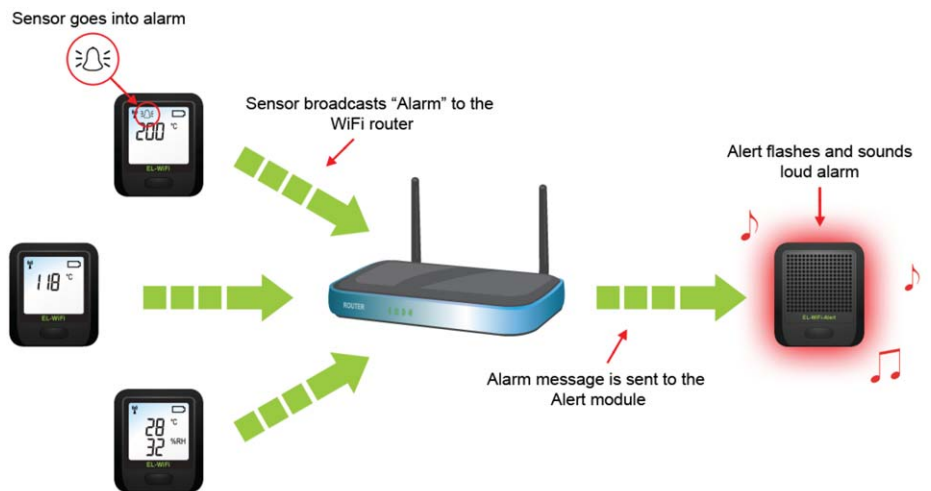
The EA WLAN-ALARM-Alert has been designed to be continuously powered via the mains however it does contain a rechargeable lithium polymer battery for device positioning and limited power during the event of a mains failure.

The software installed on the PC will allow set-up, sensor association and alarm data review. This software is available to download for free from [www.lcd-module.de](http://www.lcd-module.de).

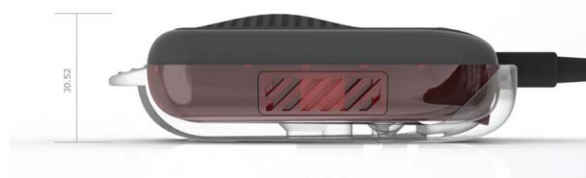
The EA WLAN-ALARM-Alert can be attached to a wall or vertical surface using bracket and screws or sticky pad provided.

Specifications	Minimum	Typical	Maximum	Unit
Back-up battery life			2	Days
USB supply voltage	4.5	5	5.5	Vdc
Sound output		100		dBA @ 1m
Operating temperature range	-20 (-4)		+60 (+140)	°C (°F)

*Warning - do not exceed operating temperatures*



## DIMENSION



*all dimensions are in mm*