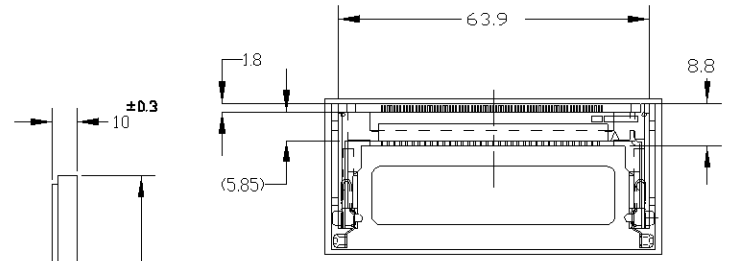
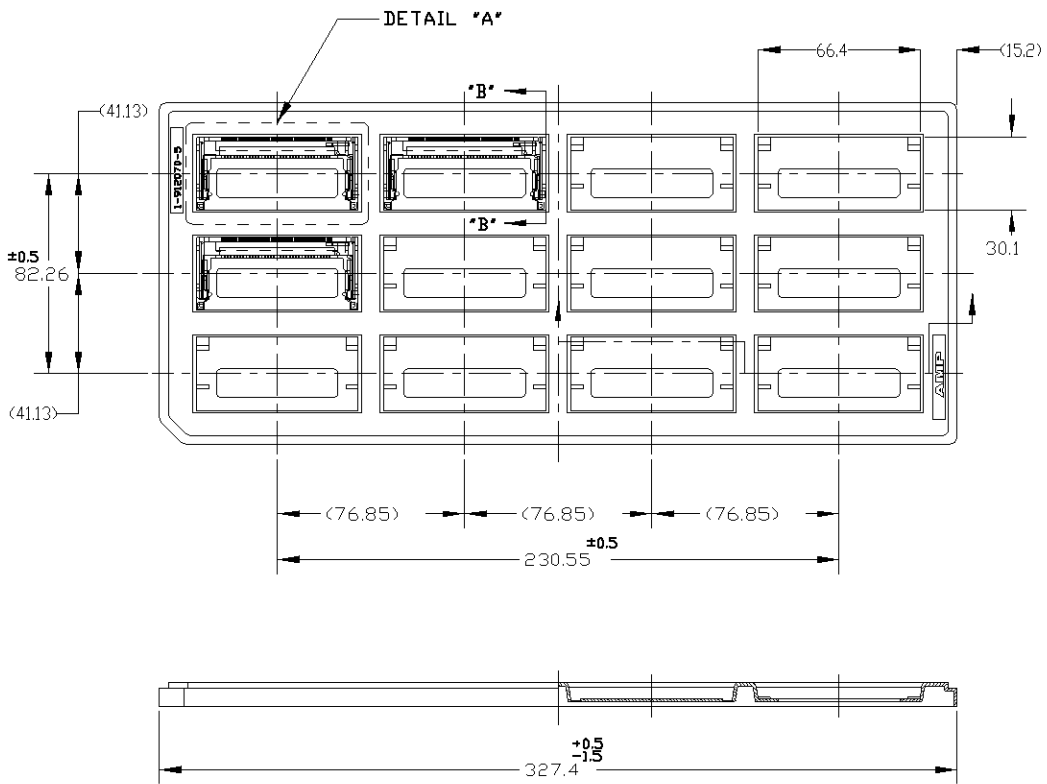


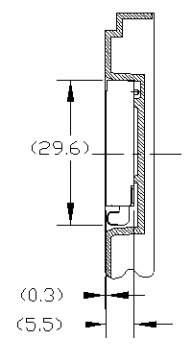
4  
THIS DRAWING IS UNPUBLISHED. RELEASED FOR PUBLICATION J1998  
© COPYRIGHT 1998 BY AMP INCORPORATED. ALL RIGHTS RESERVED.

2 1

LOC		REVISIONS				
P	LTR	DESCRIPTION	ECN	DATE	DWN	APVD
J	D	RELEASED	ECR-05-001352	18/MAY/05	L.Z	I.E
	O1	-	ECO-10-000444	22JAN10	KK	HMR



DETAIL "A"  
(SCALE 1:1)



SECTION "B"- "B"  
(SCALE 1:1)

5	OBSELETE	5V,Au,PL.	12	72	<del>5353869-3</del>
		3.3V,Au,PL.	12	72	5353869-1
	REMARKS	QTY	POS.	PART NO.	

THIS DRAWING IS A CONTROLLED DOCUMENT FOR AMP INCORPORATED. IT IS SUBJECT TO CHANGE AND THE CONTROLLING ENGINEERING ORGANIZATION SHOULD BE CONTACTED FOR THE LATEST REVISION.

DIMENSIONS: mm

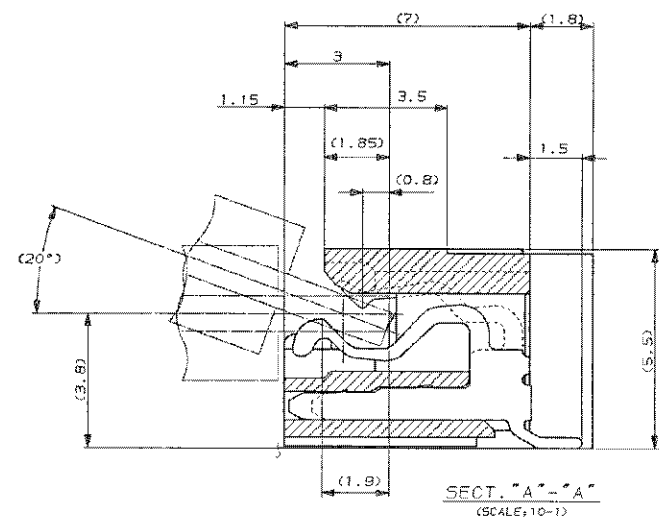
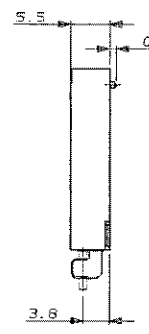
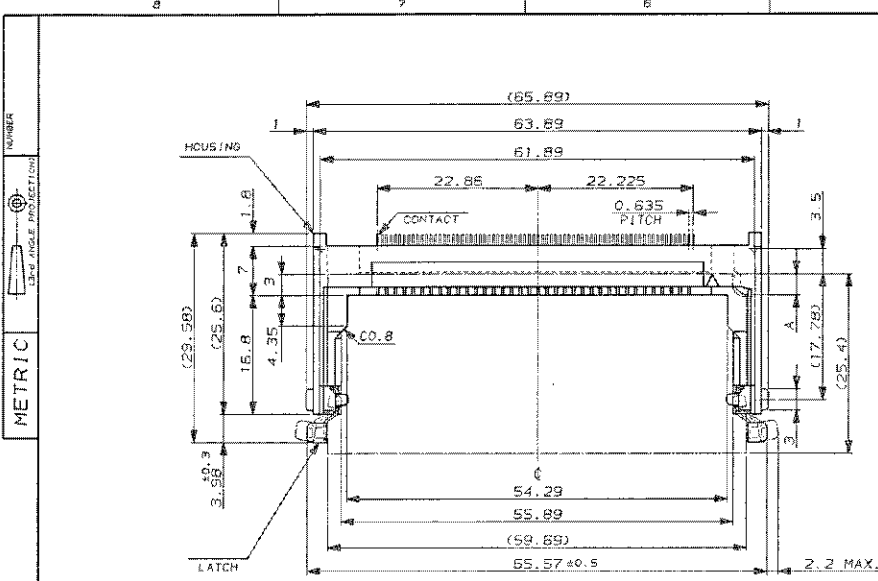
TOLERANCES UNLESS OTHERWISE SPECIFIED:  
 0-10 : ±0.2  
 10-20 : ±0.25  
 20-100 : ±0.3  
 ANGLE : ±0.3

MATERIAL: \_\_\_\_\_ FINISH: \_\_\_\_\_

DWN LED ZHOU 18/MAY/05  
 CHK STEVEN YAO 18/MAY/05  
 APVD TENDOMOTO 18/MAY/05  
 PRODUCT SPEC 108-5403  
 APPLICATION SPEC

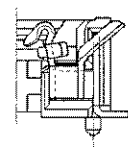
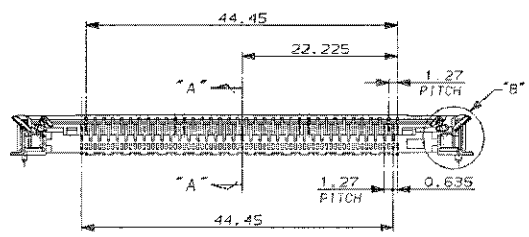
CUSTOMER DRAWING

WIRE RANGE		INSULATION DIA	
Tyco Electronics AMP K.K. Kawasaki, Japan			
NAME: HARD TRAY MIII SOCKET			
SIZE: A3	CAGE CODE: 00779	DRAWING NO: 5353869	RESTRICTED TO: -
SCALE: 1:2		SHEET: 1 OF 3	REV: O1

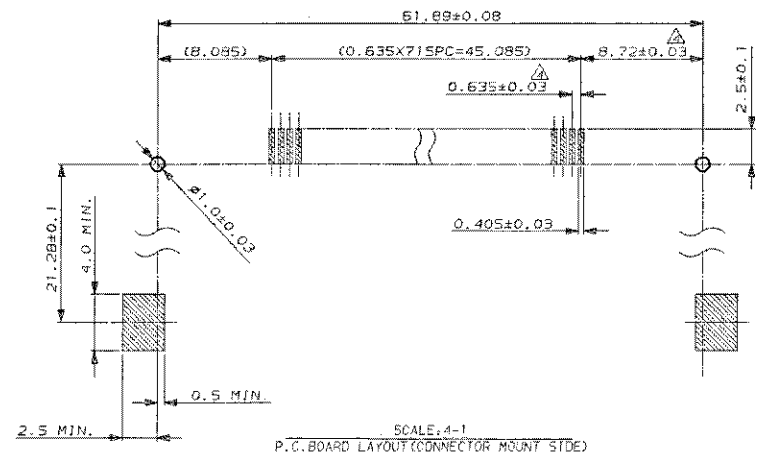


- NOTES
- MATERIAL & FINISH  
 HOUSING : GLASS FILLED LCP  
 CONTACT : COPPER ALLOY  
 LATCH : COPPER ALLOY, TIN PL.  
 CONTACT PLATING (AU PL. TYPE)  
 Au (0.3µm) PL. AT CONTACT, TIN PL. AT  
 TINE OVER NI PL.  
 TOLERANCE : NON CUMULATIVE.

**⚠** OBSOLETE PARTS: OBSOLETE CIS STREAMLINING  
 PER D.RENAUD/D.SINISI



DETAIL "B"  
 (SCALE: 5-1)



BLACK	1.0	6.15	⚠ 0.3µm Au	⚠ 5353869-1
NATURAL	1.0	2.98	⚠ 0.3µm Au	5353869-1
HOUSING COLOR	C	A	PLATING CONTACT POINTS	PART NO.

Copyright © 1993 AMP Incorporated, LTD. ALL RIGHTS RESERVED.		tyco Electronics		Tyco Electronics AMP S.p.A. Korovodolovo	
WIRE AWG(S) AWG (AUG - )		INSULATION(S) and		NAME HARD TRAY M III SOCKET	
MATERIAL(S) SEE NOTES		FINISH(S) SEE NOTES		INTERNAL TOLERANCES C J No. C-5353869	
LIT. (REVISION RECORD)		DR. (DATE)		SCALE 2-1 REV. 01 SHEET 2 OF 3	

(CUSTOMER DRAWING)

ALL DIMENSIONS IN MM. DO NOT SCALE PRINT

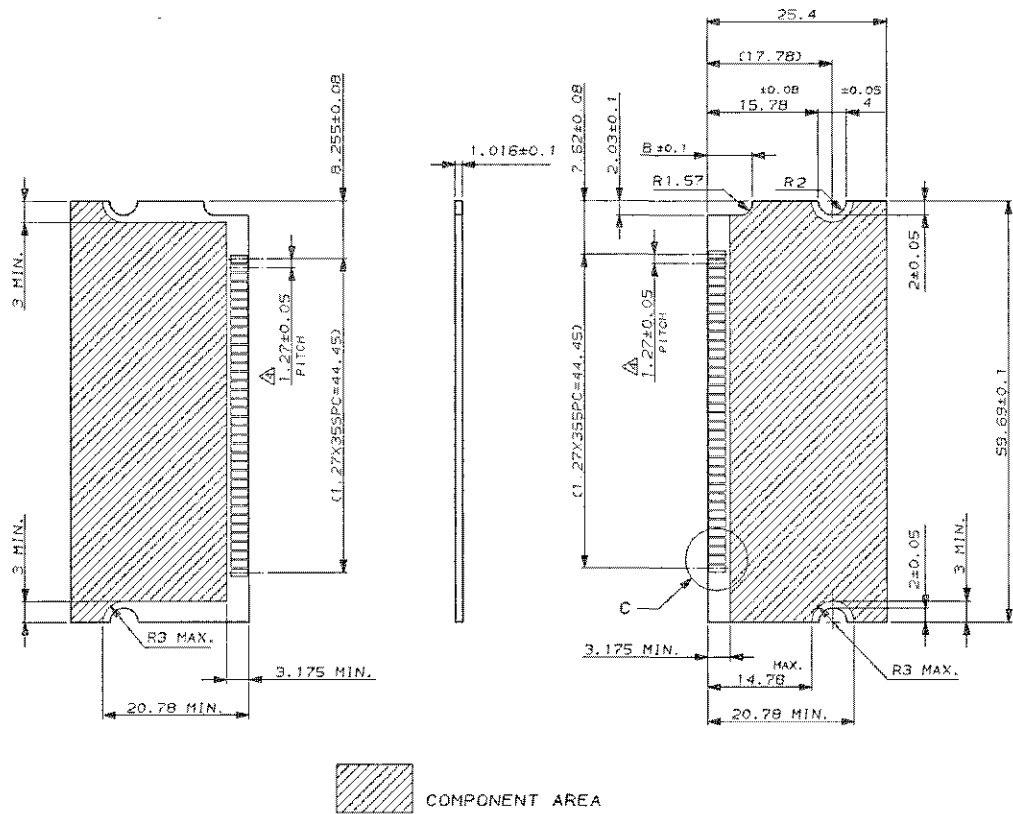
PRINT DIST. REF. 0-01

METRIC



ALL DIMENSIONS IN MM. DO NOT SCALE DRAWING

PRINT DIST.



RECOMMENDED DIMENSIONS OF "SMALL OUTLINE SIMM" P.C. BOARD

6.35	5.0V
3.175	3.3V
6	CIRCUIT VOLTAGE

Copyright © 1993 AMP Electronics, LTD. ALL RIGHTS RESERVED.		Type Electronics AMP P.P. Konsaak, Japan	
HARD TRAY M III SOCKET		C-5353888	
MATERIAL: SEE NOTES		FINISH: SEE NOTES	
GENERAL TOLERANCES:		LOC: J	
SCALE: 2-1		REV: 01	
SHEET: 3 OF 3			

(CUSTOMER DRAWING)