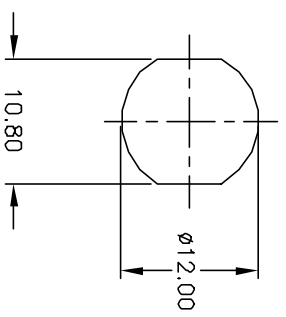


CIRCUIT: SPST  
CONTACT CONFIGURATION

SWITCH FUNCTION	
A	B
↑	→
DNF	DN

LEGEND  
 O = OFF POSITION  
 ■ = INDICATES KEY PULL  
 X = INDICATES NO KEY PULL



RECOMMENDED PANEL CUTOUT

- NOTES:
1. ALL DIMENSIONS IN MM
  2. GENERAL TOLERANCE: X,X=±0.4  
X,X,X=±0.25
  3. TERM. NOS. FOR REFERENCE ONLY.
  4. RATING: 1A @125VAC, 0.5A @250VAC
  5. CONTACT RESISTANCE: 10mILLI-OHMS
  6. DIELECTRIC STRENGTH: 1000 VAC-1Minute
  7. MATERIALS:  
 HOUSING: ZINC ALLOY DIE CAST  
 CYLINDER: ZINC ALLOY W/CHROME PLATING  
 TERMINAL AND CONTACTS: SILVER PLATED  
 KEYS (2): ZINC ALLOY, CHROME PLATING

REV.	ECN No.	DESCRIPTION	DATE	CHKD
A	11373	RELEASED FOR PRODUCTION	4/3/01	CJB

TITLE		SCALE	DATE	DR	DWG	REV
K0133A-801		1.5:1	4/3/01	CJB	K400105	A



THE INFORMATION CONTAINED IN THIS DOCUMENT IS PROPRIETARY TO E-SWITCH AND IS NOT TO BE COPIED OR TRANSFERRED