

DO NOT SCALE FROM THIS PRINT

TABLE 1					
EDGE MOUNT THICKNESS	"A"	"B"	"C"	BODY	CONTACT
-EM2	.130[3.30]	.0670[1.702]	.058[1.47]	BTH-XXX-01-D-EM2	T-1S42-01-X
* -EM3	.160[4.06]	.0980[2.489]	.088[2.24]	BTH-XXX-01-D-EM3	T-1S42-02-X

BTH-XXX-XX-X-D-EMX

No OF POSITIONS  
 -030, -050, -060, -090,  
 \*-120, \*-150  
 (PER ROW)  
 \*\*SEE NOTE 11

EDGE MOUNT THICKNESS  
 -EM2: .062[1.57] PCB  
 (USE BTH-XXX-01-D-EM2 &  
 T-1S42-01-X)  
 \* -EM3:  
 (USE BTH-XXX-01-D-EM3 &  
 T-1S42-02-X)

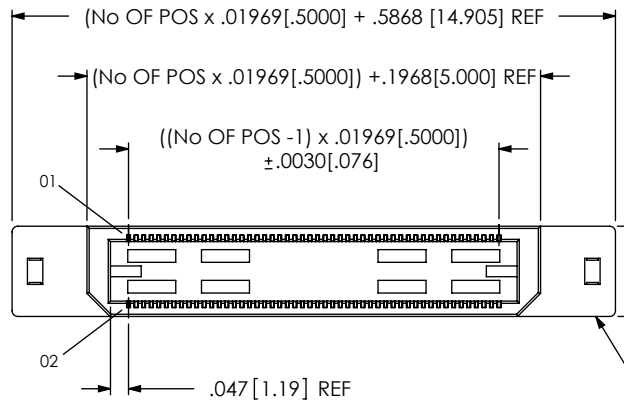
SEE NOTE 10

LEAD STYLE  
 -01

PLATING SPECIFICATION  
 -F: FLASH SELECTIVE GOLD WITH  
 MATTE TIN TAILS  
 (USE T-1S42-XX-F) [SEE NOTE 6]  
 -L: LIGHT SELECTIVE GOLD WITH  
 MATTE TIN TAILS  
 (USE T-1S42-XX-L)  
 -H: HEAVY GOLD  
 (USE T-1S42-XX-H)

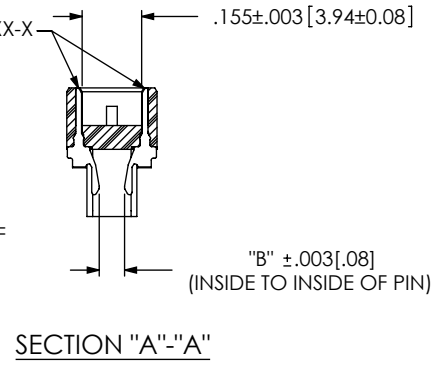
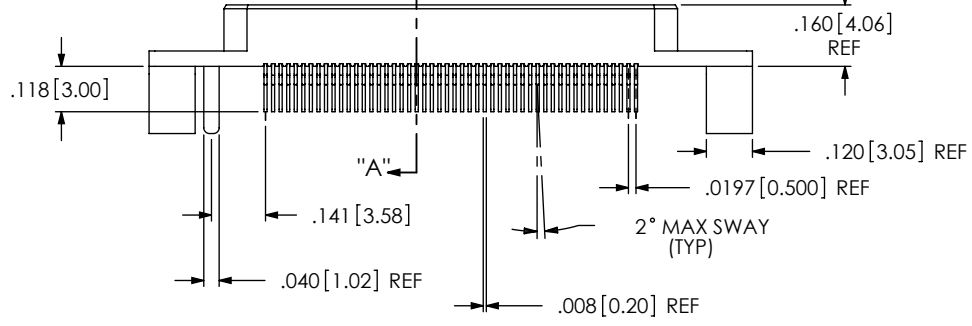
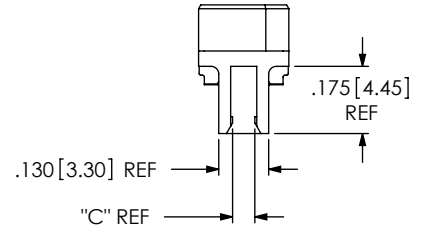
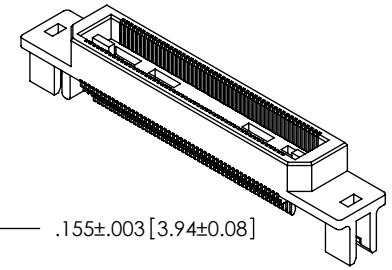
ROW SPECIFICATION  
 -D: DOUBLE  
 (USE BTH-XXX-01-D-EMX)

\* = NOT RELEASED FOR PRODUCTION  
 SEE NOTE 10



.235 [5.97] REF

BTH-XXX-01-D-EMX



SECTION "A"- "A"

TABLE 2: BOW		
No OF POSITIONS	TOP/BOTTOM	SIDE/SIDE
-030, -060, -090	.003 [ .08]	.003 [ .08]
-120, -150	.004 [ .10]	.003 [ .08]

NOTES:

- ⊕ REPRESENTS A CRITICAL DIMENSION.
- BURR ALLOWANCE: .0015 MAX.
- MINIMUM PUSHOUT FORCE: 5 OZ.
- MAXIMUM ALLOWABLE BOW: SEE TABLE 2.
- PARTS TO BE MOLDED TO POSITION.
- L PLATING CAN BE SUBSTITUTED FOR -F PLATING.
- NOTE DELETED.
- BOARD THICKNESS TO BE MEASURED FROM SOLDER PAD TO SOLDER PAD.
- SEE TEK TALK GUIDE FOR PROCESSING EDGE MOUNT PARTS TO BOARD.
- EM3 IS NOT A STANDARD OFFERING; AVAILABLE AS AN ASP ONLY. PLEASE CONTACT SAMTEC INTERCONNECT PROCESSING GROUP WITH ORDER INQUIRIES
- FOR NEW APPLICATIONS REQUIRING THESE POSITIONS, PLEASE CONTACT SAMTEC INTERCONNECT PROCESSING GROUP.

**PACKAGING VIEW**  
 (PARTS TO HAVE POSITION #1 LOADED IN SAME DIRECTION AS ARROW ON TUBE)

TUBE: PT-1-24-01-95  
 PLUG: TP-03

UNLESS OTHERWISE SPECIFIED, DIMENSIONS ARE IN INCHES. TOLERANCES ARE:  
 DECIMALS .XX: ±.01 [ .3]  
 .XXX: ±.005 [ .13]  
 .XXXX: ±.0020 [ .051]

**PROPRIETARY NOTE**  
 THIS DOCUMENT CONTAINS INFORMATION CONFIDENTIAL AND PROPRIETARY TO SAMTEC, INC. AND SHALL NOT BE REPRODUCED OR TRANSFERRED TO OTHER DOCUMENTS OR DISCLOSED TO OTHERS OR USED FOR ANY PURPOSE OTHER THAN THAT WHICH IT WAS OBTAINED WITHOUT THE EXPRESSED WRITTEN CONSENT OF SAMTEC, INC.

520 PARK EAST BLVD, NEW ALBANY, IN 47150  
 PHONE: 812-944-6733 FAX: 812-948-5047  
 e-Mail: info@SAMTEC.com code: 55322

DESCRIPTION:  
 .5mm TERMINAL ASSEMBLY, EDGE MOUNT

DWG. NO. **BTH-XXX-XX-X-D-EMX**

BY: DEAN P 5/3/2000 SHEET 1 OF 1

**MATERIAL:** DO NOT SCALE DRAWING SHEET SCALE: 2:1  
 INSULATOR: LCP, COLOR: BLACK  
 TERMINAL: PHOS BRONZE