



EXCLUSIVE NEW PRODUCTS!
PDU Ethernet Switch Combos

A Network-Grade PDU with a Built-in Gigabit Ethernet Switch!

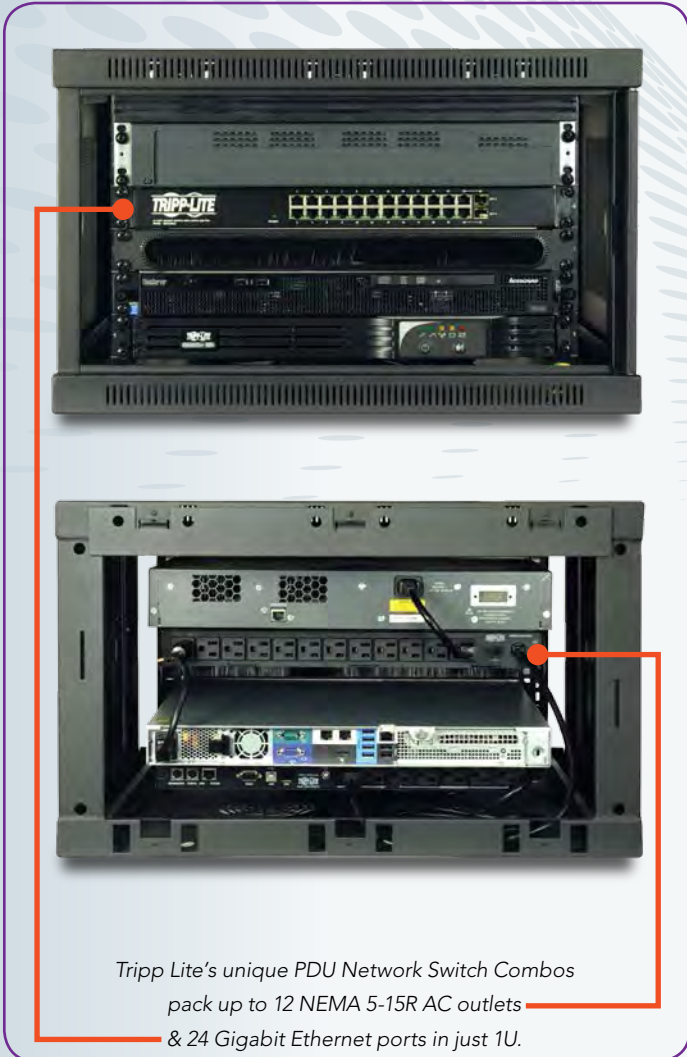


NSU-G24C2

Maximum Power and Network Functionality in Minimal Space

In wall-mount rack cabinets and other compact IT installations, saving 1U can make the difference between a solution that works and one that doesn't. Saving 1U can also allow you to use a smaller cabinet size, reducing costs significantly across distributed installation locations.

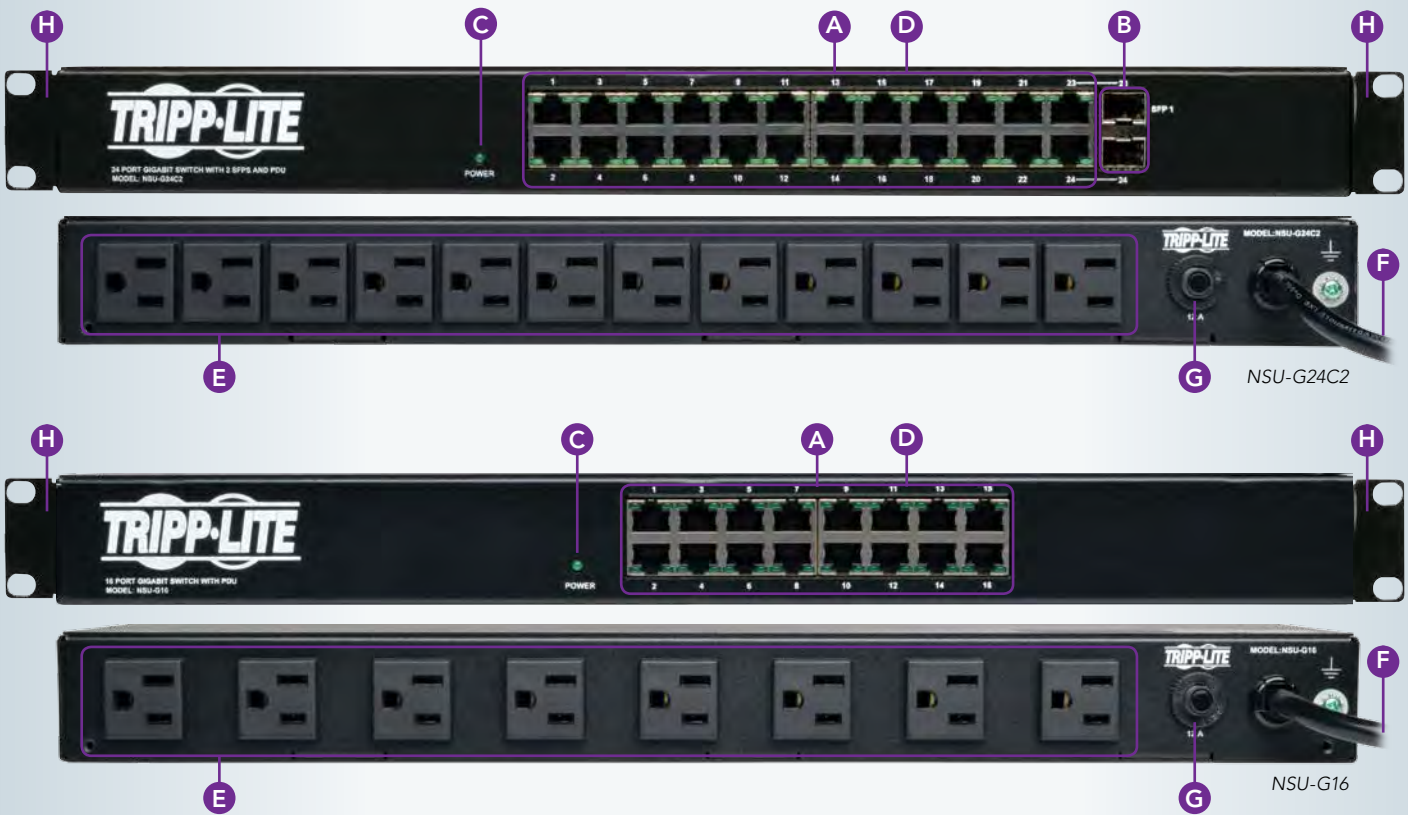
Tripp Lite's exclusive "All-in-1U" PDU Network Switch Combos pack 8 or 12 NEMA 5-15R AC outlets and 16 or 24 Gigabit Ethernet ports in just 1U of rack space. The 24-port model also includes two Mini-GBIC/SFP ports that support optical network uplink to additional units.



Tripp Lite's unique PDU Network Switch Combos pack up to 12 NEMA 5-15R AC outlets & 24 Gigabit Ethernet ports in just 1U.

Key Features

- PDU with 8 or 12 NEMA 5-15R outlets (120V)
- 16- or 24-port Gigabit Ethernet switch (unmanaged)
- Two Mini-GBIC/SFP ports for optical network uplink to additional units (24-port model only)
- 6 ft. AC input cord with NEMA 5-15P plug
- 1U horizontal rack housing (steel)
- Auto-negotiating 10/100/1000 Mbps Ethernet
- Automatic MDI/MDIX crossover detection
- Green Ethernet (turns off inactive ports and detects cable lengths to optimize power usage)
- Compliant with IEEE 802.3ab (1000BASE-T GbE), IEEE 802.3u (100BASE-TX Fast Ethernet), IEEE 802.3i (10BASE-T Ethernet), IEEE 802.3x (Full Duplex/Flow Control), IEEE 802.3 (NWAY Auto-Negotiation), 802.3ac (VLAN) and 802.3az (Energy Efficient Ethernet)
- Switching capacity at full-duplex: 48 Gbps (24-port model) or 32 Gbps (16-port model)
- Store-and-forward switching method
- 2 Mb RAM for data buffering
- 8K address MAC address table
- Support for jumbo frames up to 9216 bytes



- A** 10/100/1000 Ethernet Ports
- B** Mini-GBIC/SFP Ports
- C** Power LED
- D** Network Activity LEDs
- E** PDU Outlets (5-15R)
- F** Input Cord (5-15P Plug)
- G** Output Breaker
- H** Mounting Brackets



SPECIFICATIONS

Model	10/100/1000 Ethernet Ports	Mini-GBIC/SFP Ports	Outlets (5-15R)	Input Cord (5-15P Plug)	Nominal Input Voltage	PDU Load Capacity	Dimensions	Weight	Warranty
NSU-G24C2	24	2	12	6 ft.	120V	1.44kW	1.71 x 18.66 x 8.4 in.	6.75 lb	2 years
NSU-G16	16	–	8	6 ft.	120V	1.44kW	1.71 x 18.66 x 8.4 in.	6 lb	2 years

Tripp Lite manufactures more than 2,500 IT infrastructure solutions for data centers, server rooms, network closets and other applications. Visit www.triplite.com for more information.

© 2014 Tripp Lite. All trademarks are the property of their respective owners. Photos may differ slightly from actual products. Tripp Lite has a policy of continuous improvement. Specifications are subject to change without notice.



1111 W. 35th Street, Chicago, IL 60609 • 773.869.1234 • www.triplite.com

14-09-084 95-3429