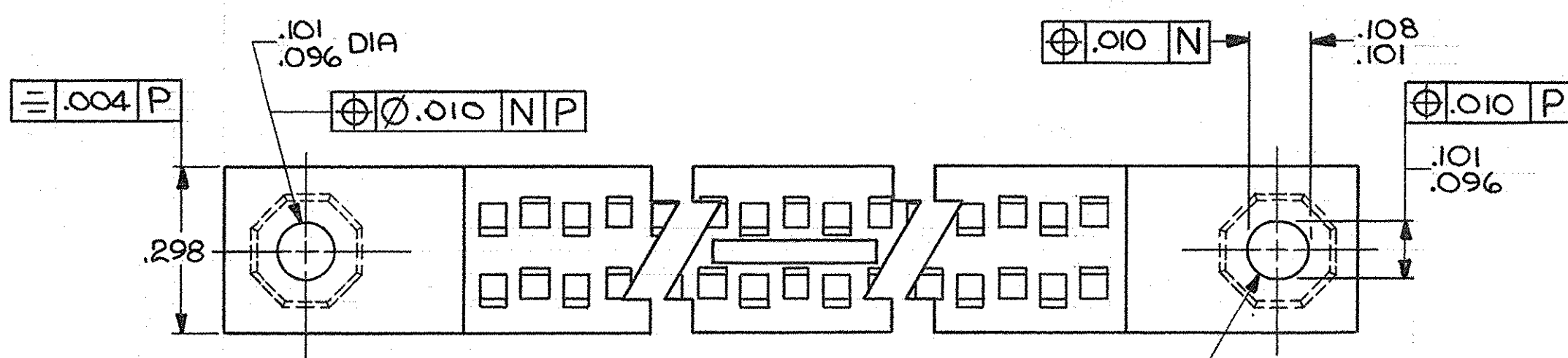
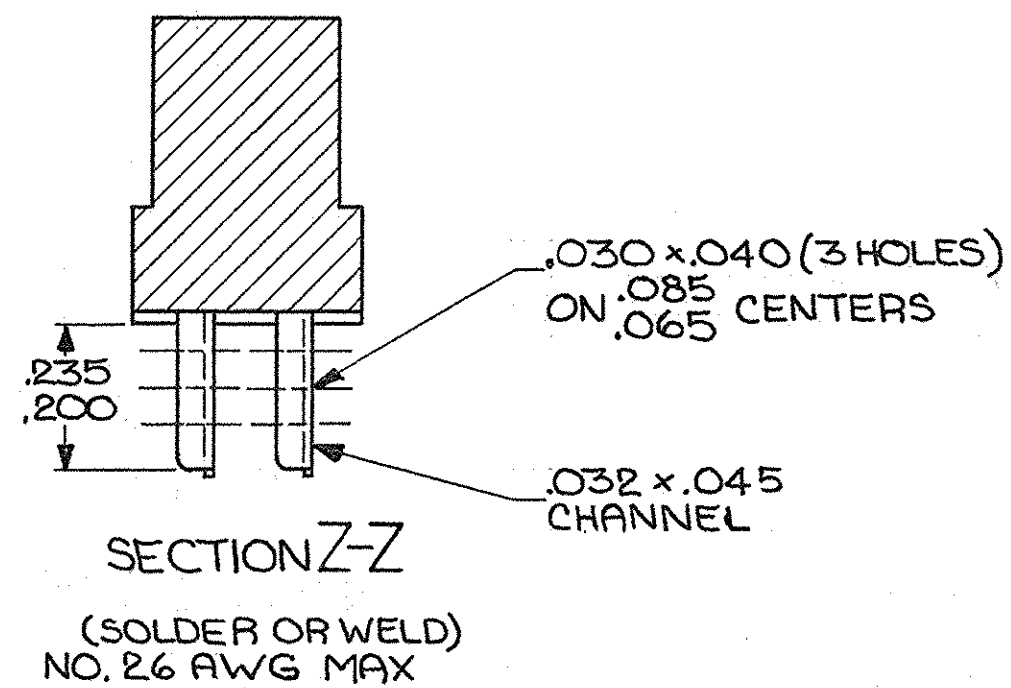
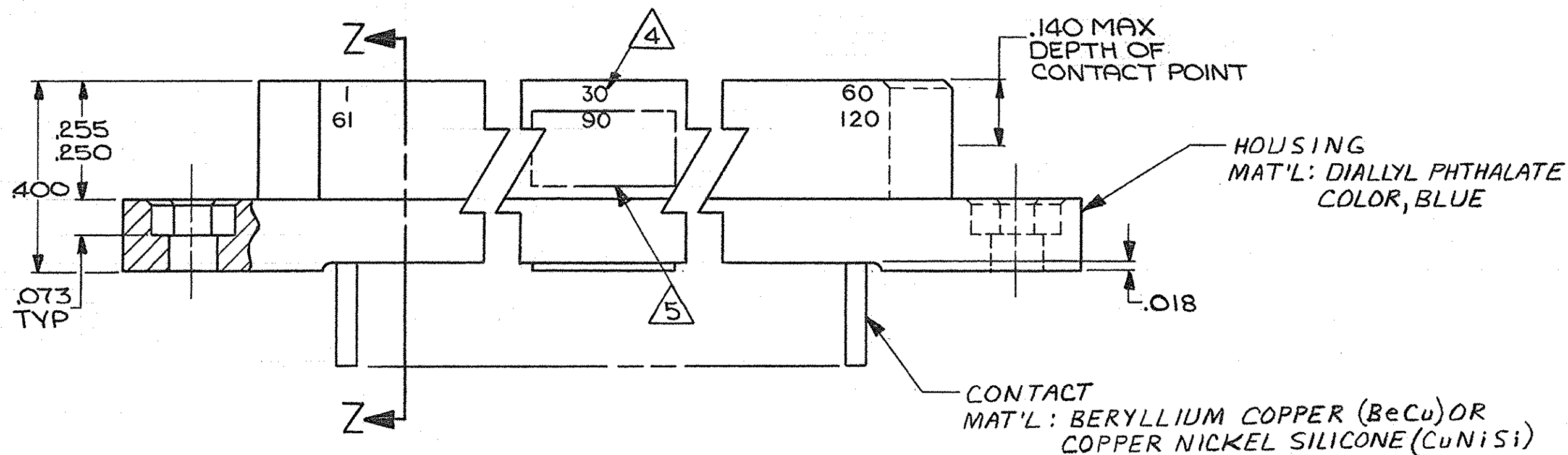
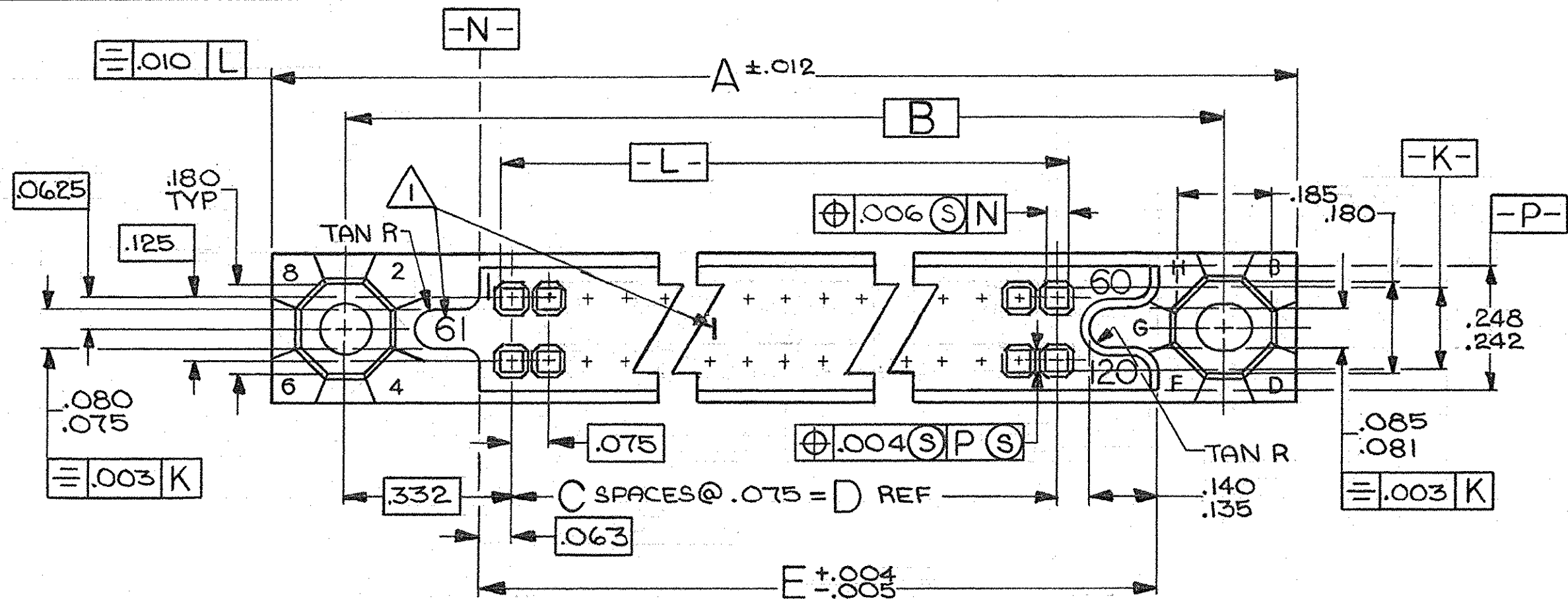


© COPYRIGHT 19 BY AMP INCORPORATED, HARRISBURG, PA.  
 ALL INTERNATIONAL RIGHTS RESERVED. AMP INCORPORATED PRODUCTS  
 COVERED BY U. S. AND FOREIGN PATENTS AND/OR PATENTS PENDING.

| REVISIONS |   |          |               |          |          |
|-----------|---|----------|---------------|----------|----------|
| P         | F | ZONE/LTR | DESCRIPTION   | DATE     | APPROVED |
|           |   | C        | ECO-08-020831 | PY 10-08 | BW       |



- 1 NUMBERS (SEE TABLE) AND LINES INDICATING EVERY FIVE (5) CAVITIES MARKED ON MATING FACE
- 3. MUST MEET ALL APPLICABLE REQUIREMENTS OF MIL-C-55302.
- 4 NUMBERS INDICATING EVERY FIVE (5) CAVITIES MARKED ON SIDE.
- 5 IDENTIFICATION MARKINGS PER MIL-C-55302 (SEE TABLE), IN ADDITION TO "AMP" PART NO., & DATE CODE.

|   |  |  |  |  |  |
|---|--|--|--|--|--|
| UNLESS OTHERWISE SPECIFIED DIMENSIONS ARE IN INCHES.<br>TOLERANCES ON:<br>DECIMALS ±.005<br>ANGLES ±              |  | CONTRACT NO<br>10-9-79                       |  | PART NO  |  |
| MATERIAL<br>SEE CALLOUTS  |  | DR<br>A.M. SHARPE<br>CHK<br>APPROV<br>APPROV |  | AMP INCORPORATED<br>Harrisburg, Pa.  |  |
| FINISH RCPT CONTACTS:<br>- .000050 GOLD IN CONTACT AREA, TIN-LEAD ON TAILS,<br>OVER .000050 NICKEL ENTIRE CONTACT |  | DSGN APPD<br>OTHER APPD                      |  | NAME<br>RCPT ASSY, 750 SERIES BOX, MILITARY,<br>WITH EXTERNAL KEYING & SOLDER<br>EYELET CONTACTS |  |
|   |  | SIZE CODE IDENT NO<br>C 00779                |  | DRAWING NO<br>531146   |  |
|   |  | SCALE 4:1                                    |  | REV<br>C   |  |
|   |  |  |  | SHEET 1 OF 2   |  |

531146

© COPYRIGHT 19 BY AMP INCORPORATED, HARRISBURG, PA.  
 ALL INTERNATIONAL RIGHTS RESERVED, AMP INCORPORATED PRODUCTS  
 COVERED BY U. S. AND FOREIGN PATENTS AND/OR PATENTS PENDING.

| REVISIONS |   |          |               |
|-----------|---|----------|---------------|
| P         | F | ZONE/LTR | DESCRIPTION   |
|           |   |          | [SEE SHEET 1] |

|   |                   |   |           |                                   |       |    |  |       |                 |           |                        |                      |          |
|---|-------------------|---|-----------|-----------------------------------|-------|----|--|-------|-----------------|-----------|------------------------|----------------------|----------|
|   |                   |   |           |                                   |       |    |  |       |                 |           |                        |                      |          |
| M55302/25-30  | 1<br>91           | — | 90<br>180 | 6.940                             | 6.675 | 89 | 7.340  | 7.630 | 180             | 531146-4  |                        |                      |          |
| M55302/25-26  | 1<br>81           | — | 80<br>160 | 6.190                             | 5.925 | 79 | 6.590  | 6.880 | 160             | ↑ -3      |                        |                      |          |
| M55302/25-22  | 1<br>76           | — | 75<br>150 | 5.815                             | 5.550 | 74 | 6.215  | 6.505 | 150             | ↓ -2      |                        |                      |          |
| M55302/25-18  | 1<br>61           | — | 60<br>120 | 4.690                             | 4.425 | 59 | 5.090  | 5.380 | 120             | 531146-1  |                        |                      |          |
| IDENTIFICATION MARKING  | CONTACT IDENT NO. |   |           | E                                 | D     | C  | B  | A     | NO. OF CONTACTS | PART NO   |                        |                      |          |
| UNLESS OTHERWISE SPECIFIED DIMENSIONS ARE IN INCHES.<br>TOLERANCES ON:<br>DECIMALS ± .005<br>ANGLES ± |                   |   |           | CONTRACT NO<br>10-10-79           |       |    | AMP INCORPORATED<br>Harrisburg, Pa.  |       |                 |           |                        |                      |          |
| MATERIAL  |                   |   |           | DR<br>AM SHARPE                   |       |    | NAME<br>RCPT ASSY, 750 SERIES BOX, MILITARY,<br>WITH EXTERNAL KEYING & SOLDER<br>EYELET CONTACTS |       |                 |           |                        |                      |          |
| FINISH  |                   |   |           | CHK<br>Roger W. Durbine 11/8/79   |       |    | APPD<br>Roger W. Durbine 11/8/79   |       |                 |           |                        |                      |          |
|   |                   |   |           | APPD<br>S. J. [Signature] 11/8/79 |       |    | DSGN APPD  |       |                 | SIZE<br>C | CODE IDENT NO<br>00779 | DRAWING NO<br>531146 | REV<br>C |
|   |                   |   |           | OTHER APPD                        |       |    | SCALE 4:1  |       |                 | SHEET 2   |                        |                      |          |

531146