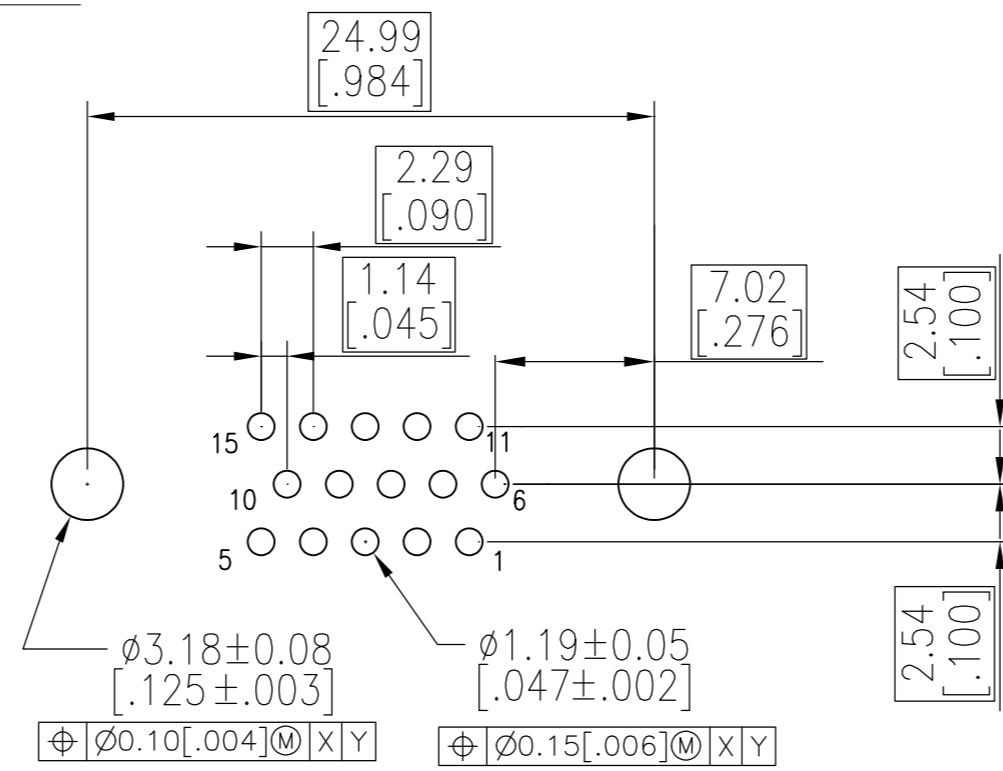
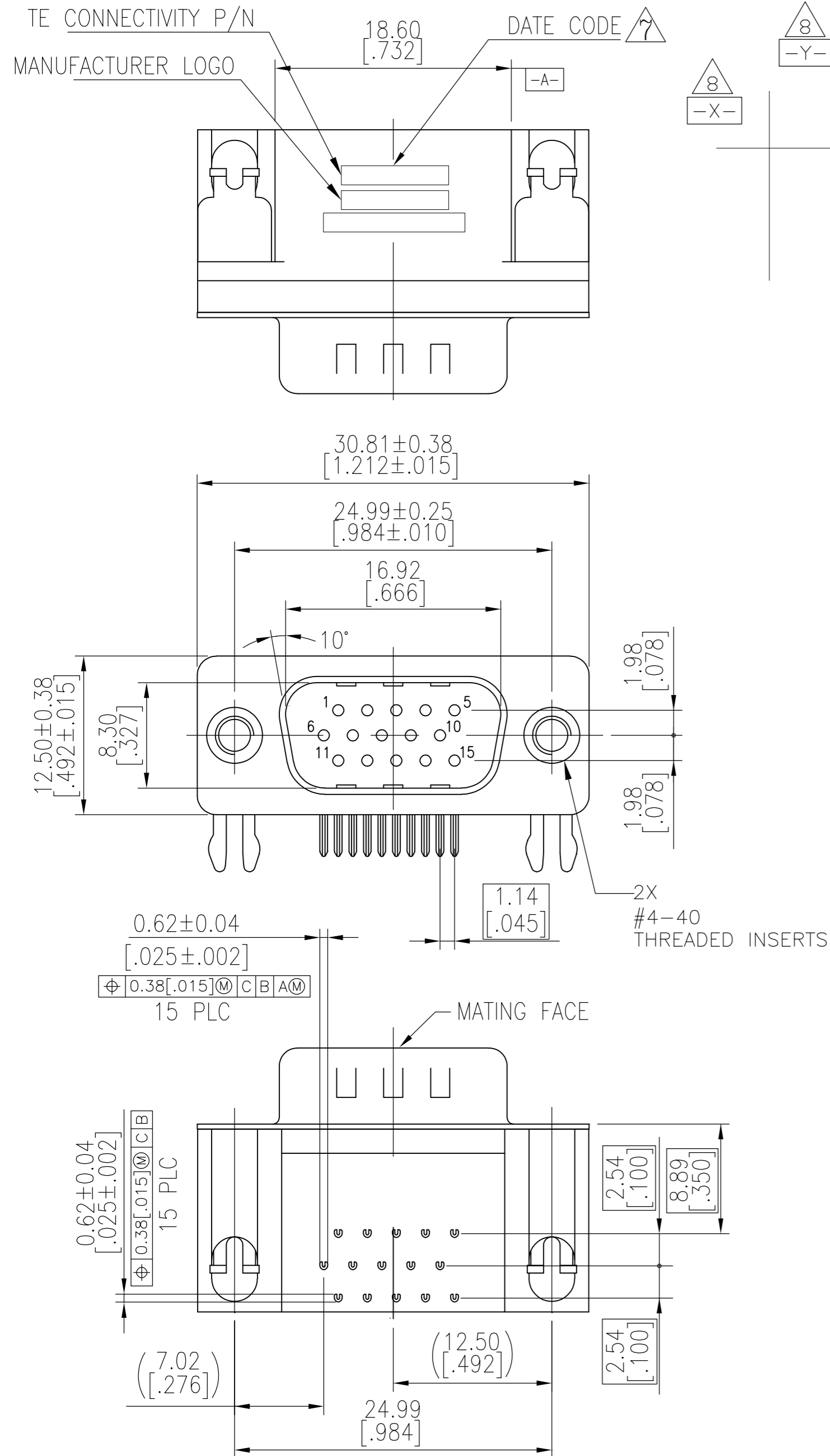
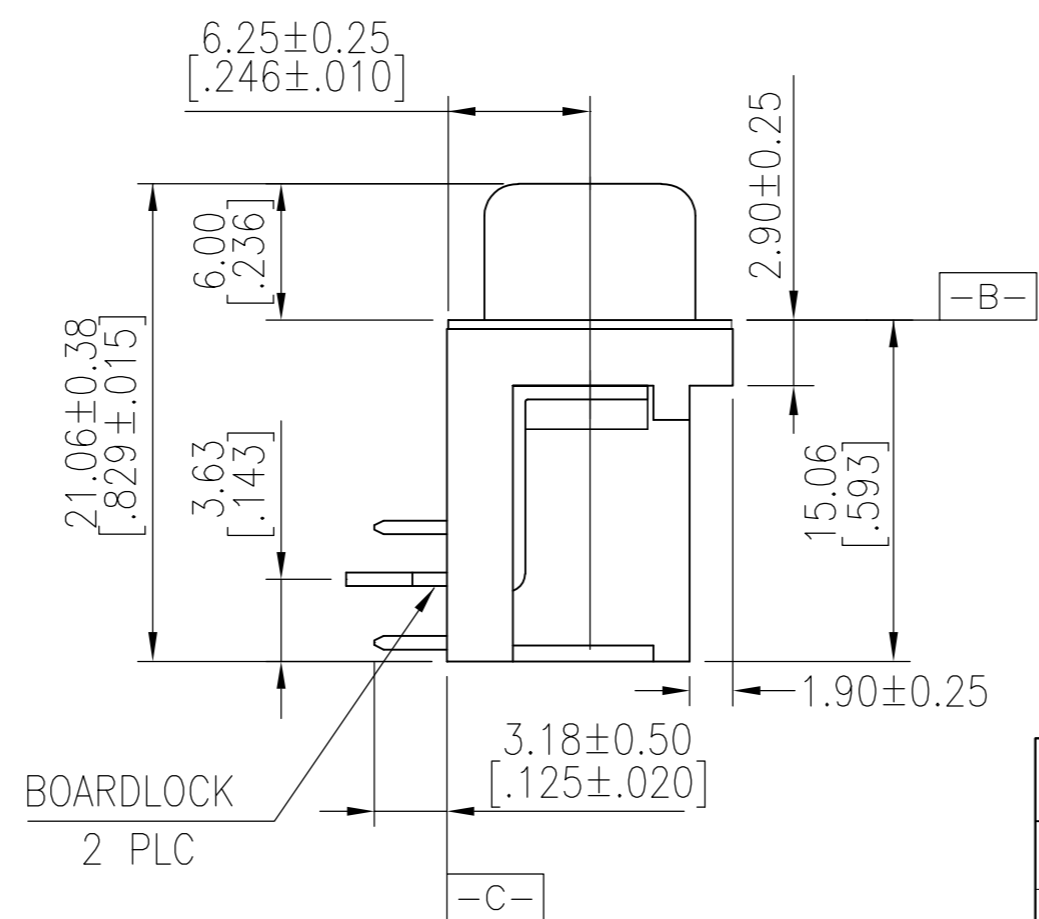


THIS DRAWING IS UNPUBLISHED. RELEASED FOR PUBLICATION
 © COPYRIGHT - By - ALL RIGHTS RESERVED.

REVISIONS					
P	LTR	DESCRIPTION	DATE	DWN	APVD
E		REVISED PER ECO-15-011151	24JUN2016	AP	DG



RECOMMENDED PCB LAYOUT



- HOUSING MATERIAL: PBT, GLASS FILLED, BLACK, UL 94V-0 RATED.
- CONTACT MATERIAL: BRASS.
- CONTACT FINISH: GOLD PLATE IN MATING AREA (SEE TABLE), 120 μ MIN TIN PLATE ON SOLDER TAIL, BOTH OVER 50 μ MIN NICKEL UNDERPLATE.
- SHELL: STEEL, NICKEL PLATE.
- BOARDLOCK: BRASS, 100 μ MIN TIN PLATE.
- THREADED INSERTS: BRASS, NICKEL PLATE.

$\triangle 7$ FOUR DIGIT DATE CODE IN THIS FORMAT.

Year 01 45 Manufacturing Week

$\triangle 8$ DATUMS $-X-$ & $-Y-$ TO BE ESTABLISHED BY CUSTOMER.

OBSOLETE	Gold Flash	5749767-3
OBSOLETE	15 μ MIN	5749767-2
	30 μ MIN	5749767-1
	CONTACT MATING AREA FINISH	PART NUMBER

THIS DRAWING IS A CONTROLLED DOCUMENT.		DWN	J.GERACE	22FEB06	 TE Connectivity AMPLIMITE HD-22 15 POS PLUG, RIGHT ANGLE								
DIMENSIONS: mm [INCHES]		CHK	S.BOLASH	22FEB06									
TOLERANCES UNLESS OTHERWISE SPECIFIED:		APVD	M.WALMSLEY	22FEB06									
0 PLC \pm - 1 PLC \pm 0.38 [.015] 2 PLC \pm 0.25 [.010] 3 PLC \pm 0.15 [.006] 4 PLC \pm - ANGLES \pm 2°		PRODUCT SPEC	108-1092										
MATERIAL		APPLICATION SPEC	114-13198		SIZE	A2	CAGE CODE	00779	DRAWING NO	C=5749767	RESTRICTED TO	-	
SEE NOTES		FINISH	SEE NOTES		WEIGHT	0		SCALE	3:1	SHEET	1 of 1	REV	E
CUSTOMER DRAWING													