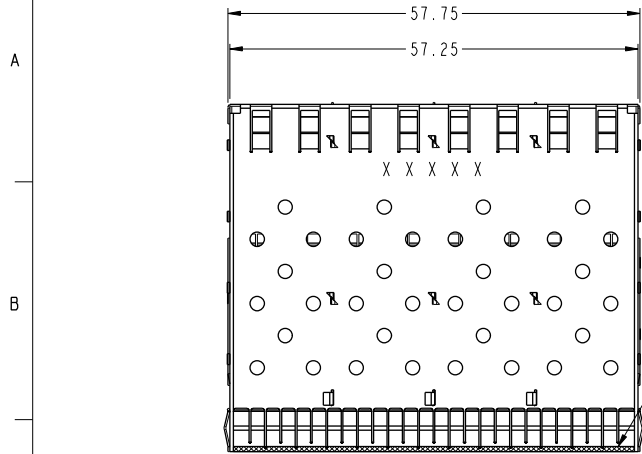
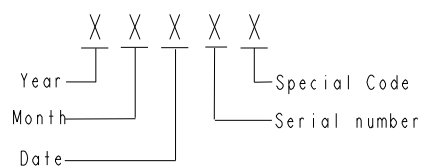
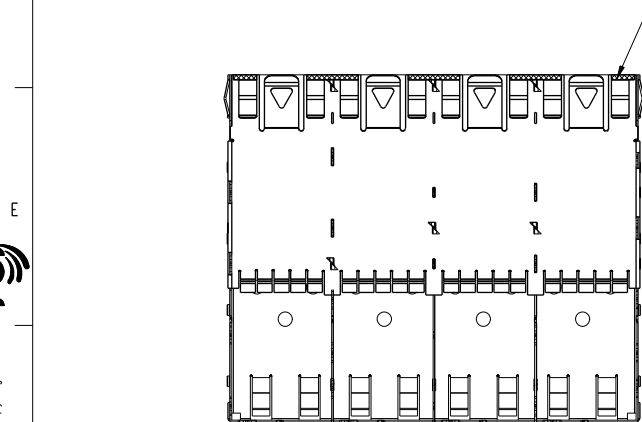
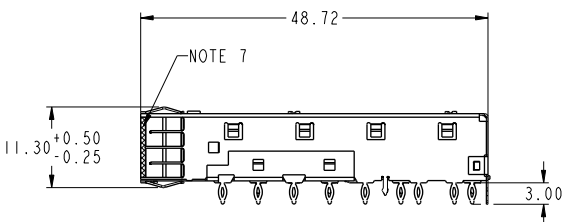
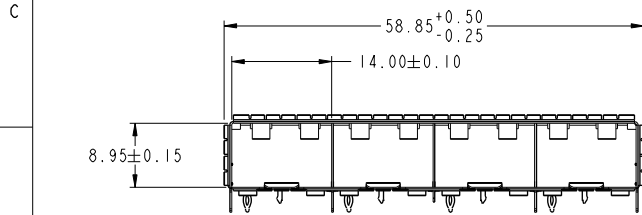
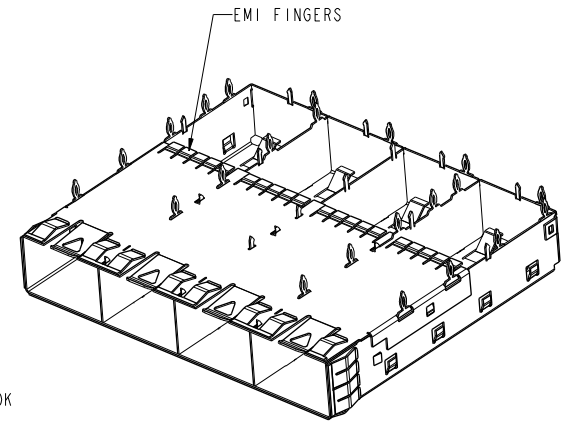
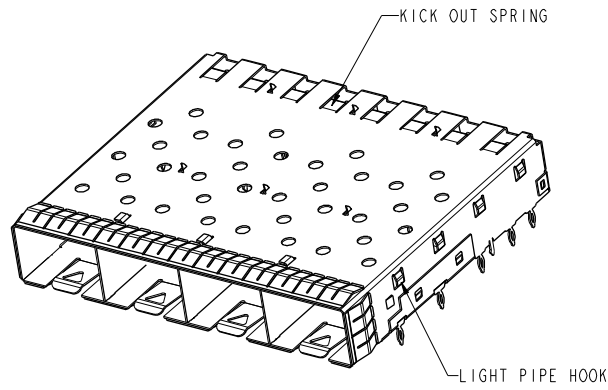


PRODUCT NUMBER	PACKAGING
10099102-011LF	TRAY



NOTE 7



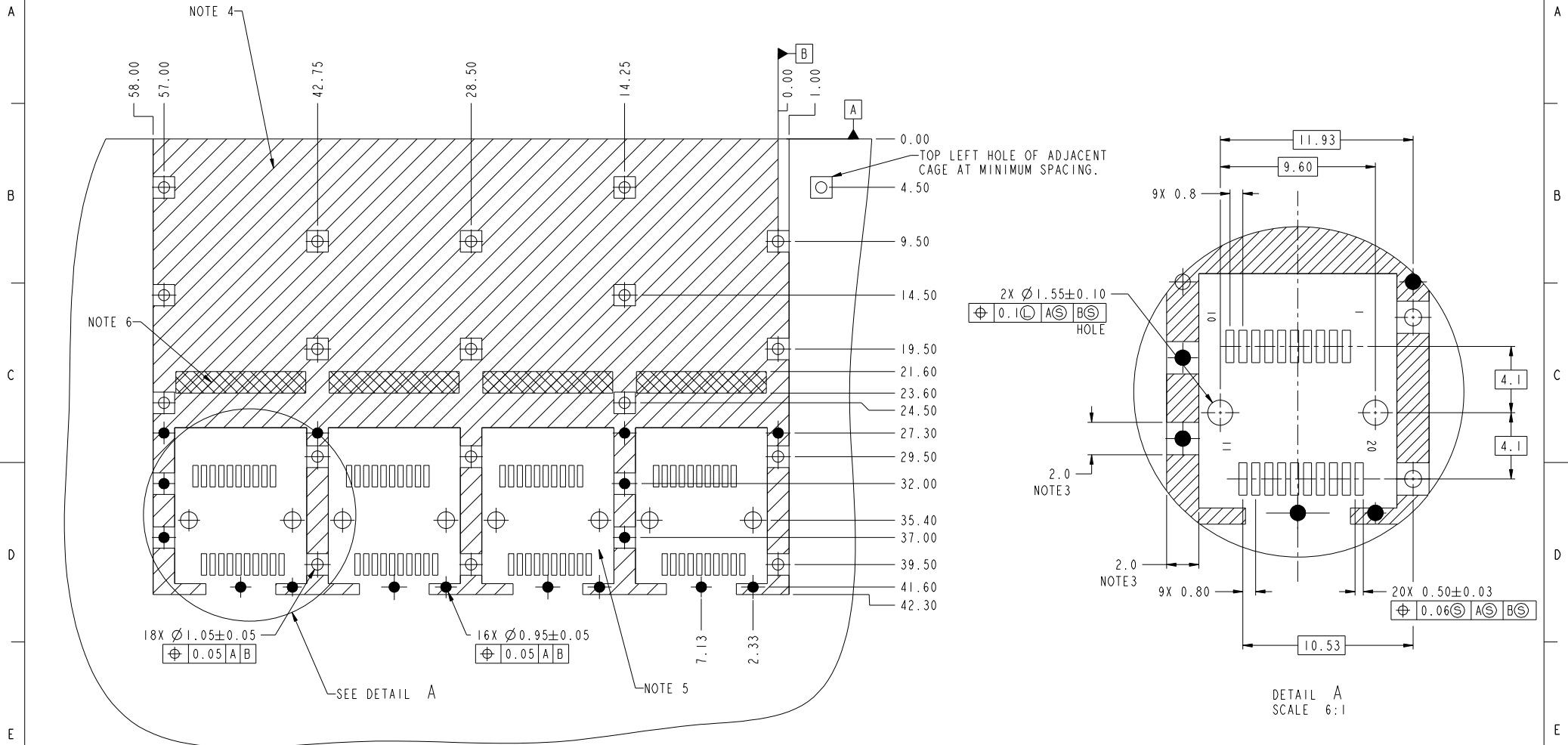
NOTES:

1. MATERIAL: COPPER ALLOY.
2. CAGE BODY: 50-200u" BRIGHT NICKEL PLATING OVER ALL. EMI FINGER: 50-200u" BRIGHT NICKEL PLATING OVER ALL.
3. PADS AND VIAS ARE FOR CHASSIS GROUND.
4. HATCHED AREA DENOTES COMPONENT AND TRACE KEEP-OUT (EXCEPT CHASSIS GROUND).
5. THIS AREA DENOTES COMPONENT KEEP-OUT (TRACES ALLOWED).
6. CROSS-HATCHED AREA EXPOSED CHASSIS GROUND (NO OSP).
7. BARE COPPER IS ACCEPTABLE IN THIS AREA.
8. PRODUCT SPECIFICATION: GS-12-616
9. APPLICATION SPECIFICATION: GS-20-125
10. PRODUCT MEETS EUROPEAN UNION DIRECTIVES AND OTHER COUNTRY REGULATIONS AS DESCRIBED IN GS-22-008.
11. DATE CODE BE PRINTED ON PROPER SURFACE.

Copyright FCI. FCI

www.fciconnect.com		surface ASME Y14.5	tolerance std ASME Y14.5	projection	MM
		TOLERANCES UNLESS OTHERWISE SPECIFIED			
Dr	S. MANI	2009-05-02	ANGULAR	size A2	Scale 2:1
Eng	M. GRAY	2009-05-27	LINEAR		
Chr	M. GRAY	2009-05-27	0° ±1"	ECN	N10-0376
Appr	M. GRAY	2009-05-27		Product family	SFP+ Spec ref
FCI		SFP+ 1X4 CAGE		10099102	Rev. B
		TOP MOUNT		CUSTOMER	sheet 1 of 3
		catalog no			

PRODUCT NUMBER
10099102-011LF

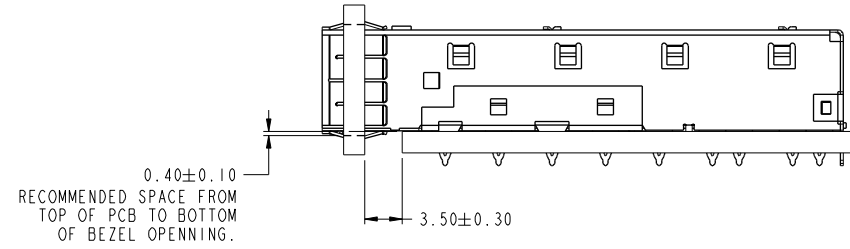
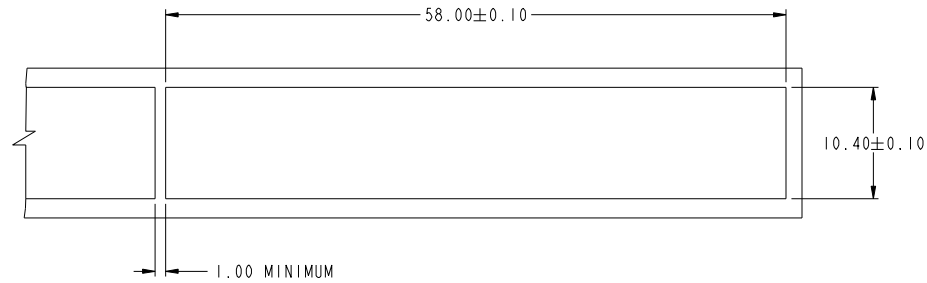


SFP HOST BOARD MECHANICAL LAYOUT

Copyright FCI
FCI

www.fciconnect.com			surface - ASME Y14.5	tolerance std ASME Y14.5	projection MM
TOLERANCES UNLESS OTHERWISE SPECIFIED					
Dr	S. MANI	2009-05-02	ANGULAR	0.x ±0.25	size A2
Eng	M. GRAY	2009-05-27	LINEAR	0.xx ±0.15	Scale 1:1
Chr	M. GRAY	2009-05-27	0° ±1"	0.xxx ±	ECN N10-0376
Appr	M. GRAY	2009-05-27	Product family	SFP+	Spec ref RELEASE
FCI		TITLE SFP+ 1X4 CAGE TOP MOUNT		catalog no	Rev. B
				10099102	sheet 2 of 3
				CUSTOMER	

PRODUCT NUMBER
10099102-011LF



BEZEL AND BOARD DIMENSIONS FOR SINGLE SIDE MOUNTING

Copyright FCI.
FCI

www.fciconnect.com			surface ASME Y14.5	tolerance std ASME Y14.5	projection	MM
			TOLERANCES UNLESS OTHERWISE SPECIFIED			
Dr	S. MANI	2009-05-02	ANGULAR	0.x	±0.25	size
Eng	M. GRAY	2009-05-27	LINEAR	0.xx	±0.15	A2
Chr	M. GRAY	2009-05-27	0° ±1"	0.xxx	±.	ECN
Appr	M. GRAY	2009-05-27	Product family	SFP+	Spec ref	N10-0376
			SFP+		Spec ref	RELEASE
FCI			SFP+ 1X4 CAGE		10099102	Rev.
			TOP MOUNT			B
			catalog no		CUSTOMER	sheet 3 of 3