

LOC		DIST		REVISIONS			
P	LTR	DESCRIPTION	DATE	DMN	APVD		
P		REVISED PER ECO-11-005027	11MAR11	RK	HMR		

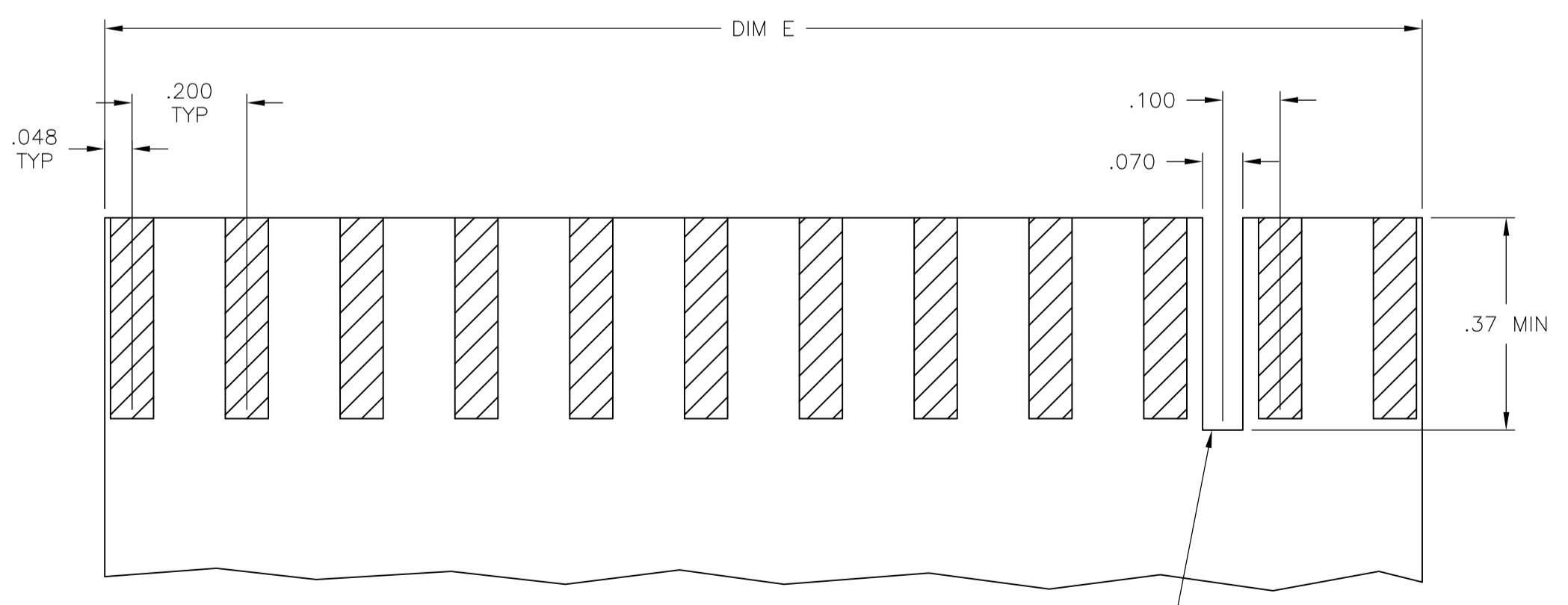
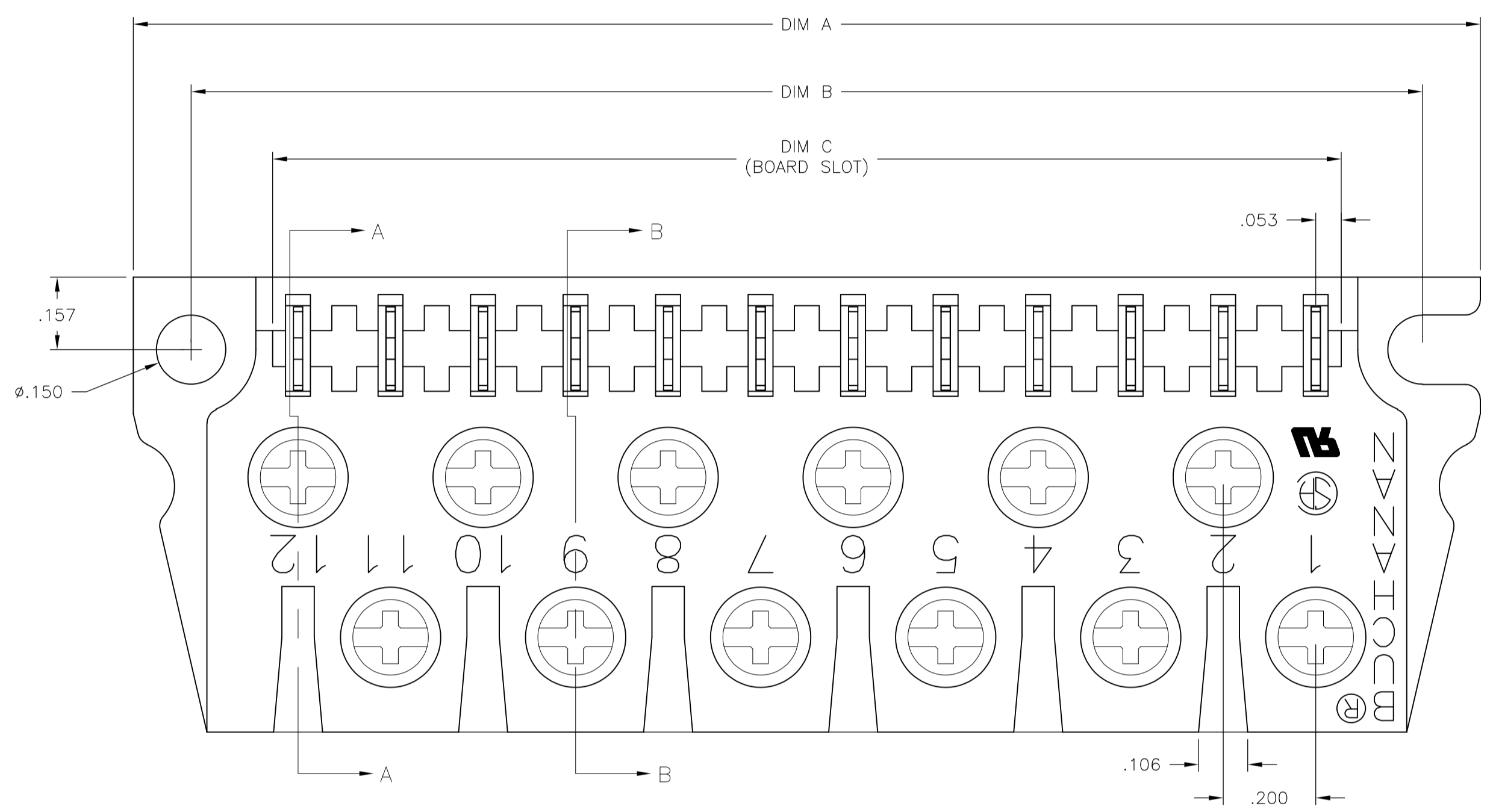
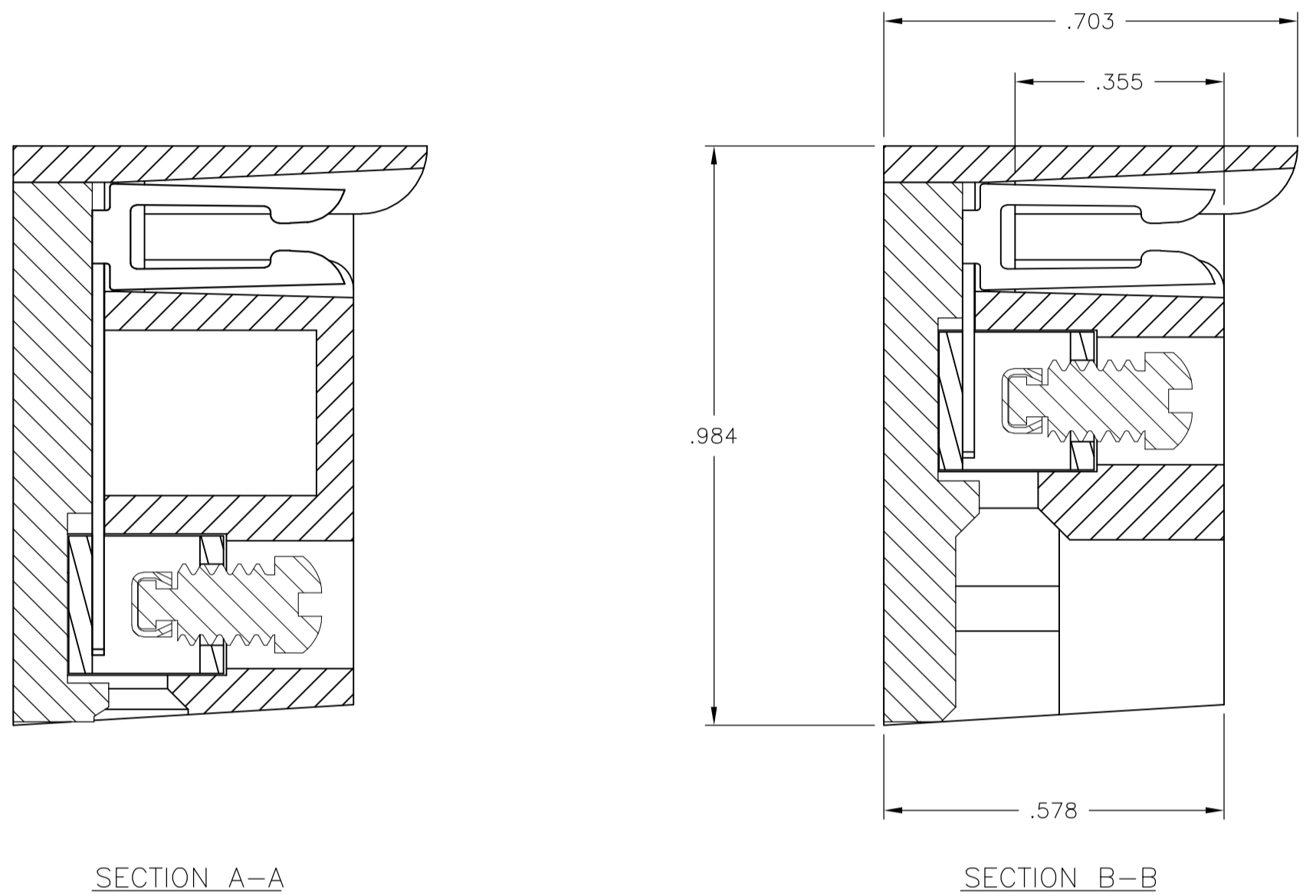
**NOTES:**

**MATERIAL:**  
 HOUSING: POLYESTER, UL94V-0, WHITE.  
 TUBULAR CONTACT: BRASS.  
 PC CONTACT: PHOSPHOR BRONZE, BRIGHT TIN PLATE.  
 SCREW: 6-32, STEEL, ZINC CHROMATE FINISH.  
 CLAMP: BRASS

**MECHANICAL:**  
 PITCH: .200"  
 WIRE STRIP LENGTH: .25"  
 RECOMMENDED TIGHTENING TORQUE: 5-8 IN-LBS.  
 BOARD INSERTION FORCE: 5.6 OZ. PER CKT.  
 BOARD SEPARATION FORCE: 1.8 OZ. PER CKT

**ELECTRICAL:**  
 MAX CURRENT: 10A.  
 OPERATING VOLTAGE: 250V.  
 DIELECTRIC WITHSTAND: 2500V.  
 WIRE RANGE: #12 STRANDED ONLY.  
 INSULATION RESISTANCE:  
 CONTACT RESISTANCE:

**ENVIRONMENTAL:**  
 OPERATING TEMP.: -65°C TO +140°C.



OPTIONAL POLARIZING NOTCH  
 LOCATION PER CUSTOMER REQUIREMENT  
 USE OPTIONAL POLARIZING KEY CAT. NO. PC17

**RECOMMENDED PCB LAYOUT**

7.095	7.110	7.470	7.720	36	PCB1A36S	1-1437410-7
5.895	5.910	6.270	6.520	30	PCB1A30S	1-1437410-5
4.695	4.710	5.070	5.320	24	PCB1A24S	1-1437410-3
3.495	3.510	3.870	4.120	18	PCB1A18S	1-1437410-1
2.295	2.310	2.670	2.920	12	PCB1A12S	1437410-9
DIM E	DIM C	DIM B	DIM A	NO. OF POS.	CATALOG NUMBER	PART NUMBER

THIS DRAWING IS A CONTROLLED DOCUMENT.

DIMENSIONS: INCHES	TOLERANCES UNLESS OTHERWISE SPECIFIED:	DIN S SCHLEGEL 6/17/04	TE Connectivity
	0 PL C ± -	CHK S YODER 6/17/04	<b>STE</b> TE Connectivity NAME PCB1A ASSEMBLY TIN PLATE PRODUCT SPEC APPLICATION SPEC SIZE CAGE CODE DRAWING NO RESTRICTED TO WEIGHT A1 00779 C=1437410-9 CUSTOMER DRAWING SCALE 4:1 SHEET 1 of 1 REV P
	1 PL C ± -	APVD S YODER 6/17/04	
	2 PL C ± .02		
	3 PL C ± .005		
	4 PL C ± ± 1°		
MATERIAL	FINISH		