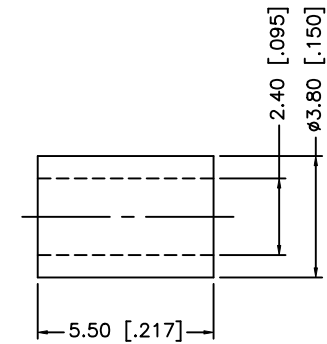
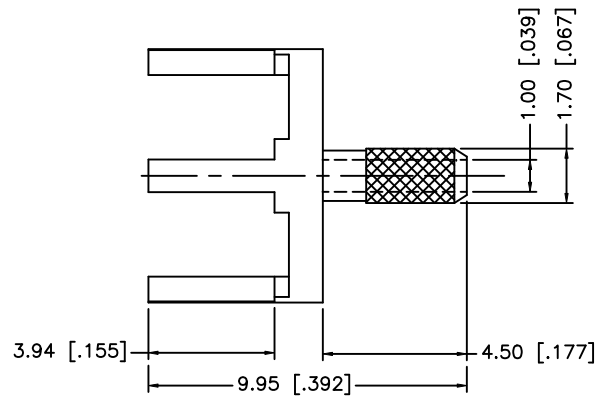
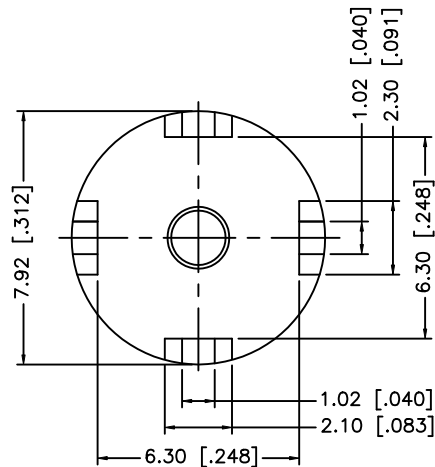
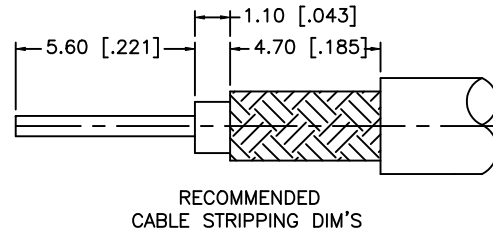
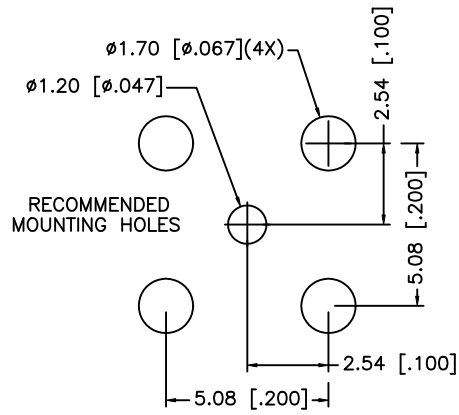


| REV. | DATE     | DESCRIPTION           |
|------|----------|-----------------------|
| NC   | 02/23/00 | INITIAL RELEASE       |
| A    | 03/24/08 | UPDATE DRAWING FORMAT |



NOTES:  
1. CRIMPED FERRULE HEX CRIMP SIZE .128"

|   |             |          |        |     |
|---|-------------|----------|--------|-----|
| 8 |             |          |        |     |
| 7 |             |          |        |     |
| 6 |             |          |        |     |
| 5 |             |          |        |     |
| 4 |             |          |        |     |
| 3 |             |          |        |     |
| 2 | FERRULE     | COPPER   | GOLD   | 1   |
| 1 | BODY        | BRASS    | GOLD   | 1   |
|   | DESCRIPTION | MATERIAL | FINISH | QTY |

UNLESS OTHERWISE SPECIFIED DIMENSIONS ARE IN MILLIMETERS. DIMENSIONS IN [ ] ARE IN INCHES AND FOR CUSTOMER REFERENCE ONLY.

UNLESS OTHERWISE SPECIFIED TOLERANCES FOR MILLIMETERS ARE:  
0.5 - 8mm ± 0.20mm  
8 - 30mm ± 0.40mm  
30 - 120mm ± 0.50mm

UNLESS OTHERWISE SPECIFIED TOLERANCES FOR INCHES ARE:  
.020 - .315 = ± 0.007"  
.315 - 1.180 = ± 0.015"  
1.180 - 4.724 = ± 0.020"

DO NOT SCALE DRAWING

| APPROVALS    | DATE              |
|--------------|-------------------|
| DRAWN G.R.S. | 03/24/08          |
| CHECKED      |                   |
| ISSUED       |                   |
| SHEET 1 OF 1 |                   |
| CAD FILE     | C:/142/142266.DWG |

# Amphenol Connex

|  |            |       |    |
|--|------------|-------|----|
| PART DESCRIPTION   |            |       |    |
| PCB MOUNT CABLE TERMINATION<br>(FOR RG-178B/U, 196A/U CABLE) |            |       |    |
| PART NO. 142266  |            |       |    |
| DWG. NO.   | 142266.DWG | REV.  | A  |
| SIZE   | A          | SCALE | NA |