

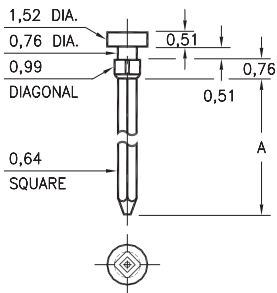
MALE PCB PINS

WRAPOST TERMINALS

5275

5275-X-05-XX-00-00-01-0

Square press-fit in 0,89 plated through-hole

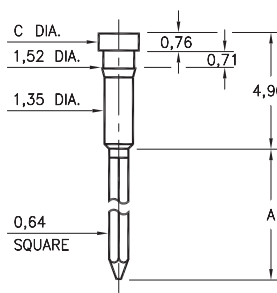


Basic Part Number	# of Wraps	Length A
5275-1	1	9,40
5275-2	2	11,94
5275-3	3	15,49

1010 ⇔ 1012/1020 ⇔ 1022

10XX-X-05-XX-00-00-01-0

Press-fit in 1,45 mounting hole

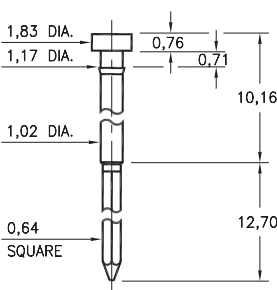


Basic Part Number	# of Wraps	Wrapost Length A	Head Dia. C
1012-1	1	6,60	1,83
1011-2	2	9,14	
1010-3	3	12,7	
1022-1	1	6,60	1,57
1021-2	2	9,14	
1020-3	3	12,7	

1215

1215-3-05-XX-00-00-01-0

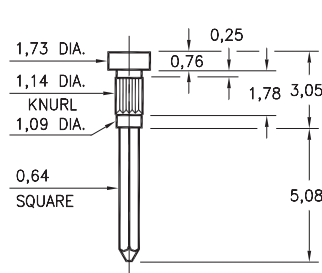
Press-fit in 1,09 mounting hole



1124

1124-0-05-XX-00-00-01-0

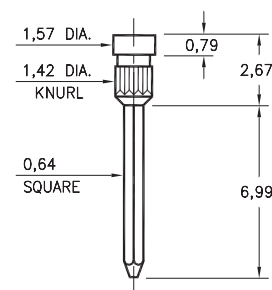
Press-fit in 1,09 mounting hole



1210

1210-0-05-XX-00-00-01-0

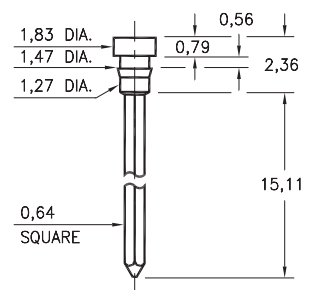
Press-fit in 1,35 mounting hole



1222

1222-0-05-XX-00-00-01-0

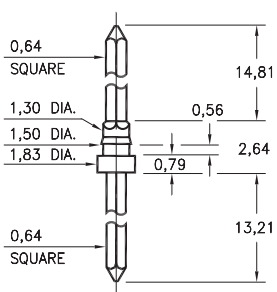
Press-fit in 1,40 mounting hole



1221

1221-0-05-XX-00-00-01-0

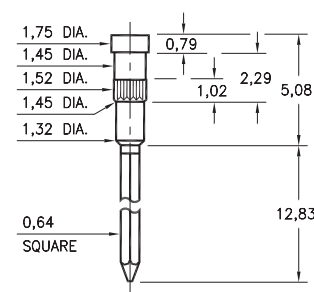
Press-fit in 1,42 mounting hole



1110

1110-3-05-XX-00-00-01-0

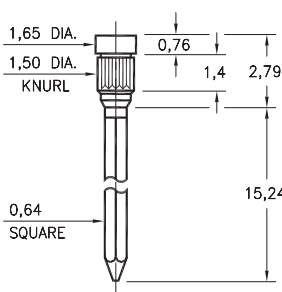
Press-fit in 1,45 mounting hole



1094

1094-0-05-XX-00-00-01-0

Press-fit in 1,42 mounting hole



SPECIFICATIONS:

Pin Material: Brass Alloy 360, 1/2 Hard
(Except where noted)

Dimensions: Millimeters

Tolerances On: Lengths: ± 0,13
Diameters: ± 0,051
Angles: ± 2°



ORDER CODE: **XXXX - X - 05 - XX - 00 - 00 - 01 - 0**

BASIC PART #

SPECIFY PIN FINISH:

- 01 5,08µm TIN/LEAD OVER NICKEL
- ◆ 80 5,08µm TIN OVER NICKEL (RoHS)
- ◆ 15 0,25µm GOLD OVER NICKEL (RoHS)
- ◆ 21 0,51µm GOLD OVER NICKEL (RoHS)

