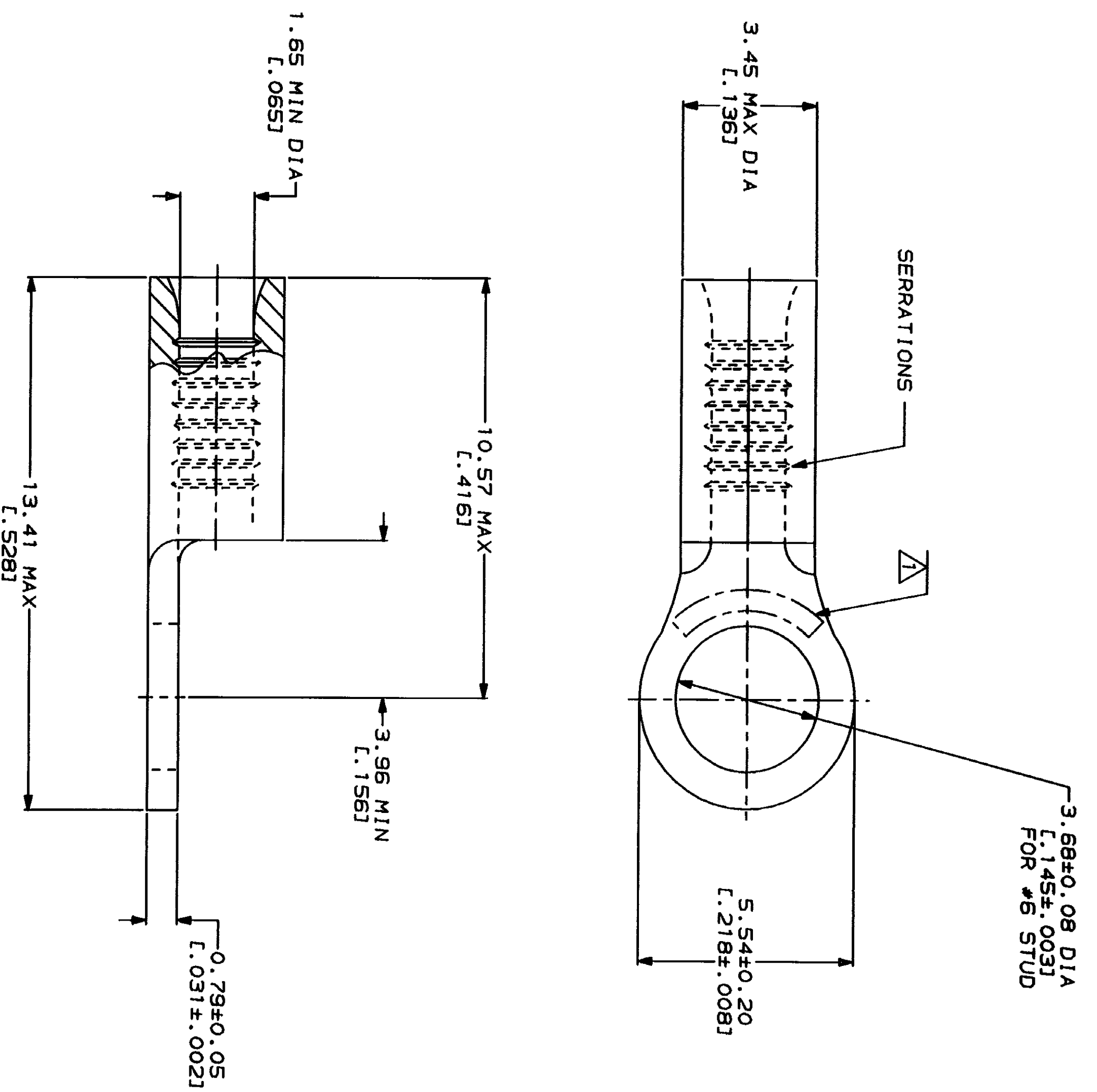


LOC	DIST	ZONE	LTR	DESCRIPTION	DATE	APPD
G	14			REVISED PER 0720-0230-93	2/25/94	DAV

METPRIG
DIMENSIONS LISTED IN MM [INCHES]

AMP WIRE RANGE 22-16 AWG STRANDED	UL E13288 Listed 22-16 AWG STRANDED
LR7189 Certified	MILITARY P/N AND CLASS
NOT CERTIFIED	NOT APPLICABLE

△ STAMP AMP 22-18* APPROX AS SHOWN
22-16 TERMINALS ARE STAMPED 22-18 IN
ACCORDANCE WITH MILITARY SPECIFICATION
MIL-T-7928, COMMERCIAL WIRE RANGE IS 22-16



AMP INCORPORATED
CUSTOMER SERVICE SYSTEMS

FOR ADDITIONAL
PRODUCT INFORMATION OR
COPIES OF DRAWINGS
AND TECHNICAL DOCUMENTS
1-800-522-6752
PRODUCT INFORMATION CENTER

FOR APPLICATION
TOOLING INFORMATION
1-800-722-1111
TOOLING ASSISTANCE CENTER

FOR ORDER ENTRY
1-800-526-5142

MAX RECOMMENDED OPERATING
TEMPERATURE:
170°C MAX

VOLTAGE RATING:
NOT APPLICABLE

WIRE CROSS SECTIONAL AREA RANGE:
0.26-1.65mm² (509-3,260) CIR MILS
STRANDED

DO NOT SCALE PRINT.
UNLESS SPECIFIED
DIMENSIONS IN—(INCHES)—
TOLERANCES ON:
2 PLG DEC ± .001
3 PLG DEC ± .002
ANGLES
PATERIAL

FINISH
TIN PLATE
0.00254L.0001001 MIN
THK PER MIL-T-10727

DR 2-3-93 TA BRINKMAN	NAME
CHK 2-3-93 DA PATTERSON	AMP Incorporated Harrisburg, PA 17105-3508
APPD 2-3-93 DE MILLER	TERMINAL, RING TONGUE, BUDGET
APPD 2-3-93 JL NECKLEY	AMP PART NO 31101
PRODUCT SPEC	APPLICATION SPEC
WEIGHT	SCALE 10:1

SCALE 10:1

CUSTOMER DRAWING

1 OF 1