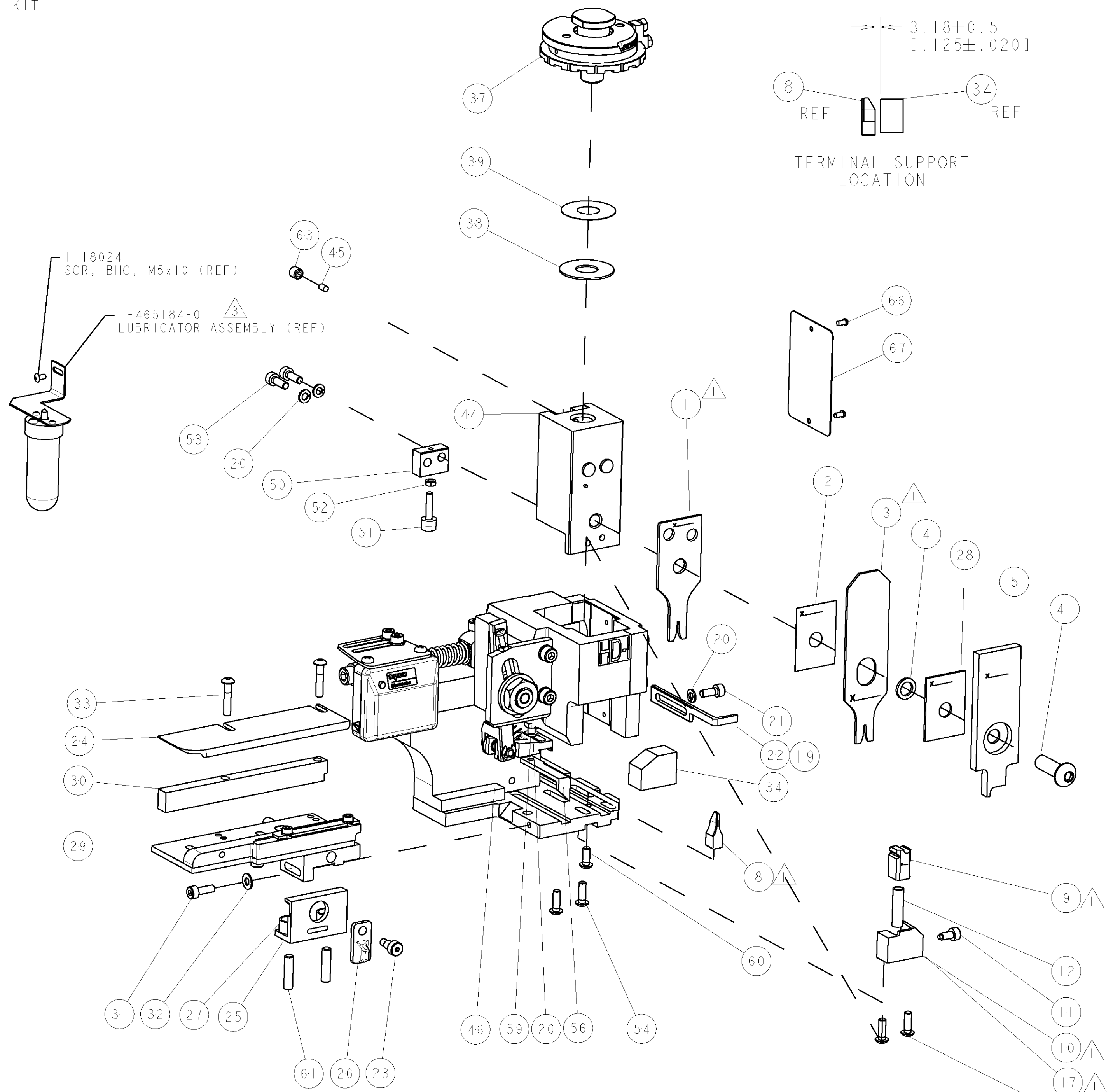
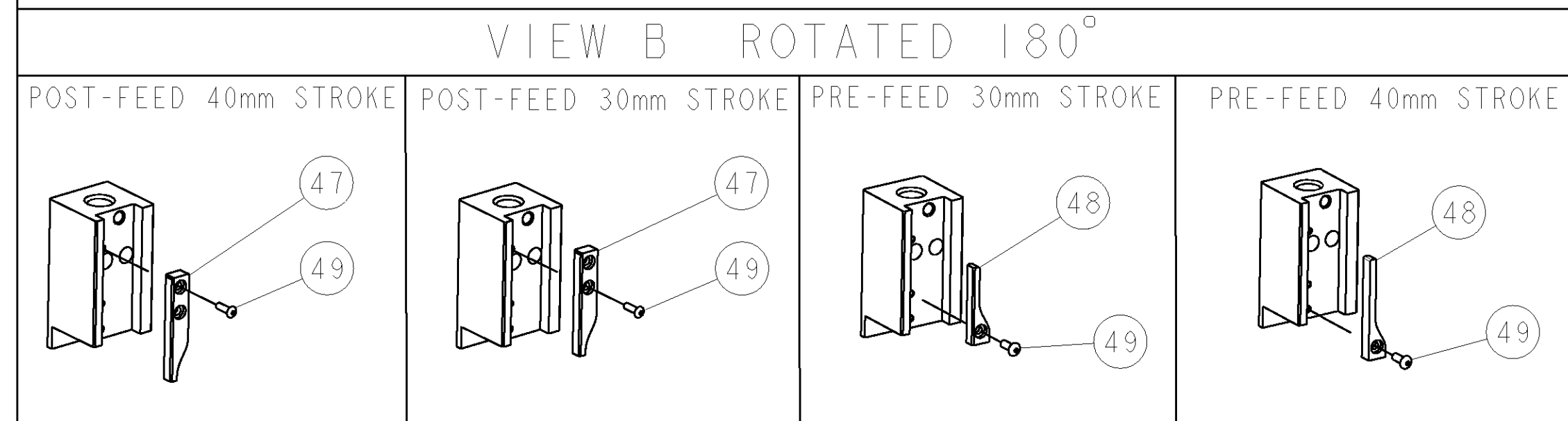


PART NUMBER	REV	TERMINATOR	FEED TYPE	DESCRIPTION
1528626-1	A	LEADMAKER	MECH POST FEED	CUTS CARRIER
1528626-2	A	BENCH	MECH PRE FEED	CUTS CARRIER
1528626-6	A	LEADMAKER	MECH POST FEED	CONTINUOUS CARRIER
7-1528626-1	A	LEADMAKER	MECH POST FEED	-1 AND SPARE PARTS
7-1528626-2	A	BENCH	MECH PRE FEED	-2 AND SPARE PARTS
7-1528626-6	A	LEADMAKER	MECH POST FEED	-6 AND SPARE PARTS
7-1528626-7	A	-	-	SPARE PARTS KIT

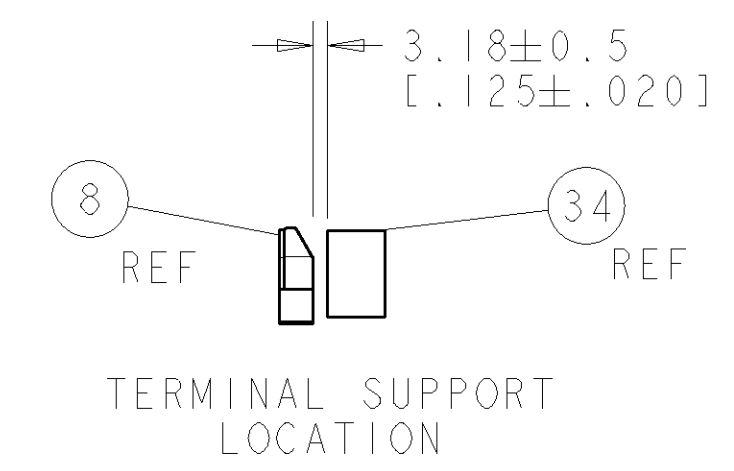
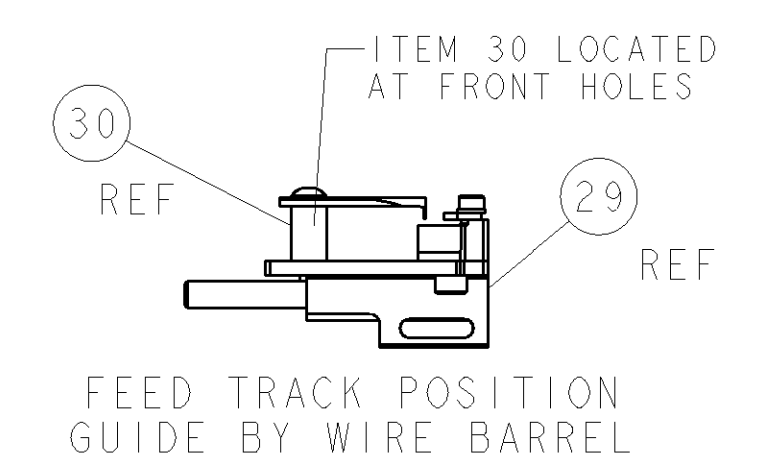
CRIMP DATA		TYCO TERMINAL	TYCO CRIMP SPEC
TERMINAL NAME: CRIMP SOCKET SIZE 20 DF			
CRIMP	SIZE	TYPE	RANGE
WIRE	1.07 [ .042 IN ]	F	28-24 AWG
INSUL	1.40 [ .055 IN ]	O	0.80-1.00 [ .030-.040 IN ]
WIRE STRIP LENGTH 2.13-2.64 [ .084-.104 IN ]		APPL INSTRUCTIONS 408-8322 & 408-8490	
TERMINAL APPL SPEC 114-10000		FEED 7.6 [ .300 IN ]	
TERMINALS APPLIED			
PIN	SOCKET		
166054	166052	-	-
215862	745502	-	-
16558540	1658538	-	-
66507	66505	-	-
WIRE SIZE	CRIMP HEIGHT	REF SETTING	
24 AWG	0.81 ± 0.05 [ .032 ± .002 IN ]	C 2	
26 AWG	0.74 ± 0.05 [ .029 ± .002 IN ]	C 7	
28 AWG	0.74 ± 0.05 [ .029 ± .002 IN ]	C 7	

- △ RECOMMENDED SPARE PARTS.
- 2. GREASE RAM, CAM, CAM FOLLOWER AND FEED ROD LIGHTLY.
- △ CERTAIN TERMINALS REQUIRE LUBRICATION. REFER TO THE APPLICATOR INSTRUCTION SHEET FOR MORE INFORMATION.
- 4. LUBRICATE DAILY PER THE APPLICATOR INSTRUCTION SHEET SUPPLIED WITH THE APPLICATOR.



\* WARNING  
ON INSTALLATION, SET WIRE DISC TO LARGEST WIRE SIZE SETTING. USE OF SETTINGS BELOW MIN. REQUIRED CRIMP HEIGHT SETTING WILL CAUSE DAMAGE TO CRIMP TOOLING.

PART NO	DESCRIPTION	ITEM NO
-77	-76	-72
-71	-6	-2
-1		
		84
		83
		82
		81
		80
		79
		78
		77
		76
		75
		74
		73
		72
		71
		70
		69
		68
		67
		66
		65
		64
		63
		62
		61
		60
		59
		58
		57
		56
		55
		54
		53
		52
		51
		50
		49
		48
		47
		46
		45
		44
		43
		42
		41
		40
		39
		38
		37
		36
		35
		34
		33
		32
		31
		30
		29
		28
		27
		26
		25
		24
		23
		22
		21
		20
		19
		18
		17
		16
		15
		14
		13
		12
		11
		10
		9
		8
		7
		6
		5
		4
		3
		2
		1



SET UP GAGE 458637-3		LOC	DIST	REVISONS			
P	LTR	DESCRIPTION	DATE	BY	CHK	APPR	
A		SEE ECO-06-008982	18APR2006	LJL	MC		
A1		ECR-07-011926	21MAY2007	MY	GB		

QTY	UNIT	PART NO	DESCRIPTION	ITEM NO					
-	-	-	-	73					
-	-	-	-	72					
-	-	-	-	71					
-	-	-	-	70					
-	-	-	-	69					
-	-	-	-	68					
-	-	-	-	67					
-	-	-	-	66					
-	-	-	-	65					
-	-	-	-	64					
-	-	-	-	63					
-	-	-	-	62					
-	-	-	-	61					
-	-	-	-	60					
-	-	-	-	59					
-	-	-	-	58					
-	-	-	-	57					
-	-	-	-	56					
-	-	-	-	55					
-	-	-	-	54					
-	-	-	-	53					
-	-	-	-	52					
-	-	-	-	51					
-	-	-	-	50					
-	-	-	-	49					
-	-	-	-	48					
-	-	-	-	47					
-	-	-	-	46					
-	-	-	-	45					
-	-	-	-	44					
-	-	-	-	43					
-	-	-	-	42					
-	-	-	-	41					
-	-	-	-	40					
-	-	-	-	39					
-	-	-	-	38					
-	-	-	-	37					
-	-	-	-	36					
-	-	-	-	35					
-	-	-	-	34					
-	-	-	-	33					
-	-	-	-	32					
-	-	-	-	31					
-	-	-	-	30					
-	-	-	-	29					
-	-	-	-	28					
-	-	-	-	27					
-	-	-	-	26					
-	-	-	-	25					
-	-	-	-	24					
-	-	-	-	23					
-	-	-	-	22					
-	-	-	-	21					
-	-	-	-	20					
-	-	-	-	19					
-	-	-	-	18					
-	-	-	-	17					
-	-	-	-	16					
-	-	-	-	15					
-	-	-	-	14					
-	-	-	-	13					
-	-	-	-	12					
-	-	-	-	11					
-	-	-	-	10					
-	-	-	-	9					
-	-	-	-	8					
-	-	-	-	7					
-	-	-	-	6					
-	-	-	-	5					
-	-	-	-	4					
-	-	-	-	3					
-	-	-	-	2					
-	-	-	-	1					
-77	-76	-72	-71	-6	-2	-1	PART NO	DESCRIPTION	ITEM NO
DIMENSIONS: mm [IN]							TOLERANCES UNLESS OTHERWISE SPECIFIED:		
0 PLC							±		
1 PLC							±		
3 PLC							±		
4 PLC							±		
ANGLES							±		
MATERIAL							FINISH		
CUSTOMER DRAWING							SCALE		