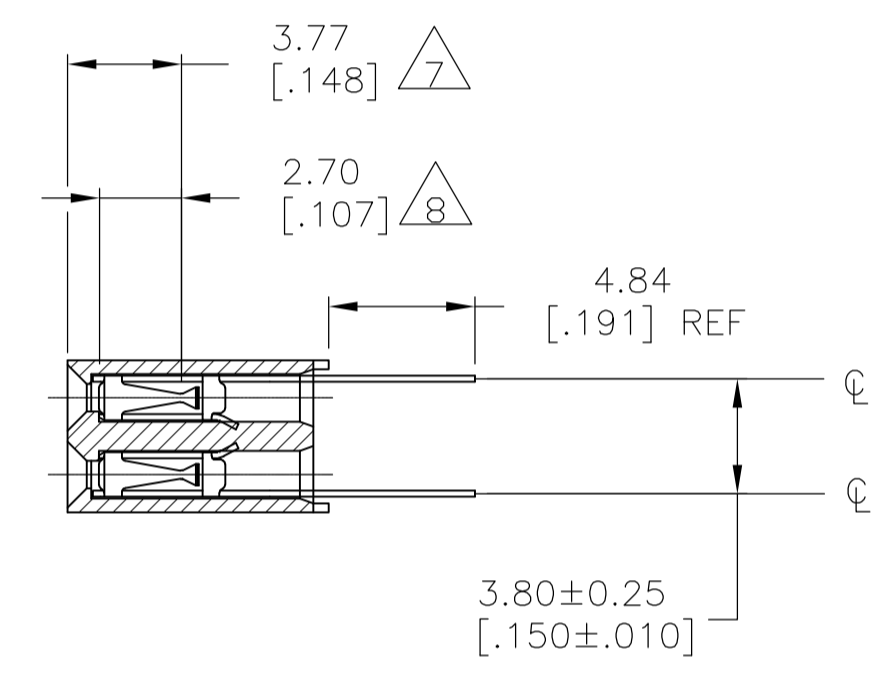
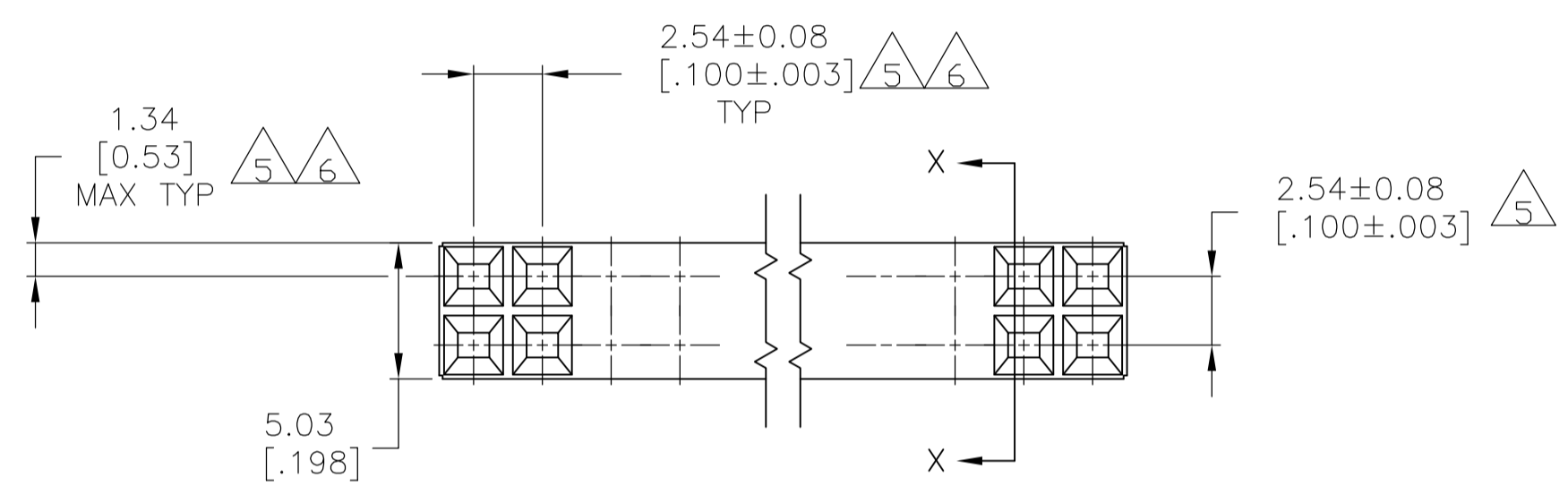
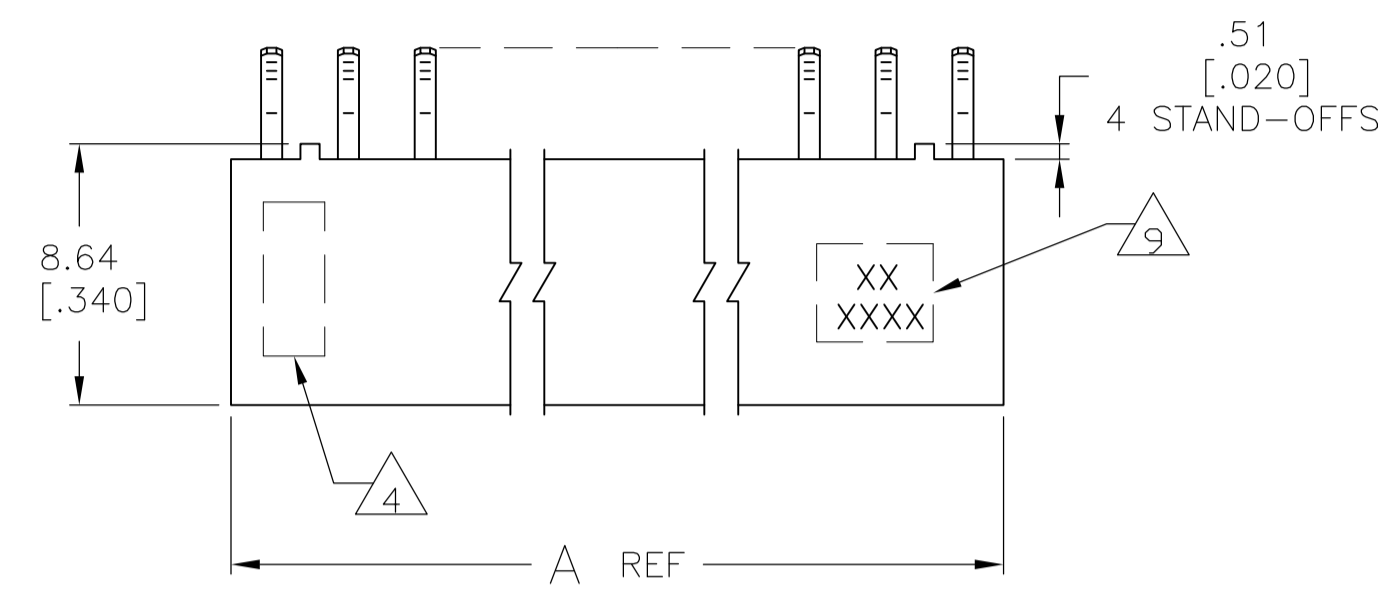
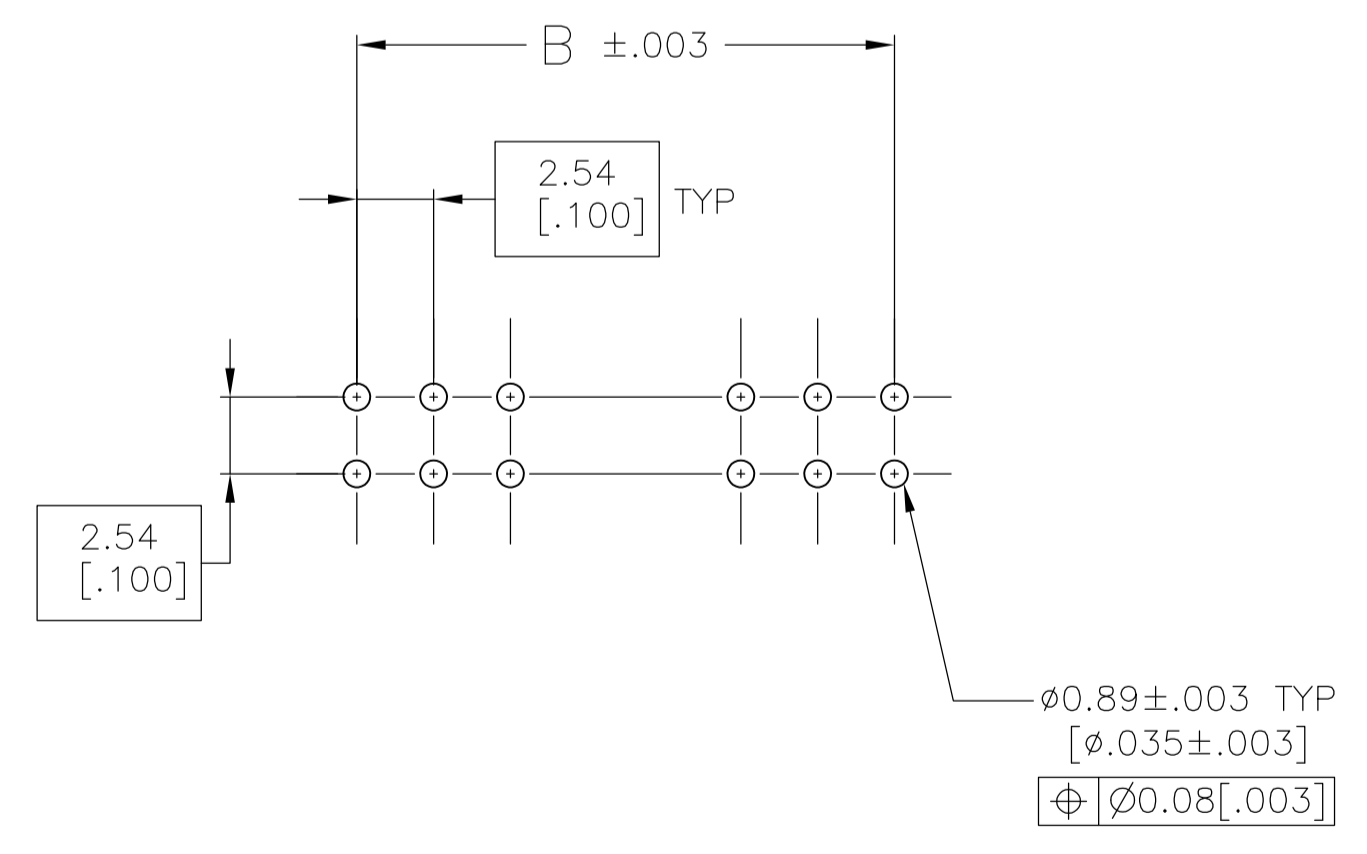


LOC	DIST	REVISIONS				
AD	00	REV	DESCRIPTION	DATE	BY	APPV
		D	EC 0G3C 0105 05	09MAR05	BSV	JRO
		D1	REVISED PER ECO-09-022424	21SEP09	KK	AEG



SECTION X-X



RECOMMENDED CIRCUIT LAYOUT

- 1 HOUSING: FLAME RETARDANT GLASS FILLED POLYESTER COLOR-BLACK,
- 2 CONTACT MATERIAL: PHOSPHOR BRONZE
- 3 DUPLEX PLATED: .000030 GOLD IN CONTACT AREA, .000150-.000300 BRIGHT TIN-LEAD ON SOLDER LEADS, ALL OVER .000050 MIN NICKEL.
- 4 DATE CODE AND PART NUMBER MARKED IN APPROXIMATE LOCATION SHOWN.
- 5 DIMENSIONS TO CAVITY CENTERLINES ONLY, NOT FOR CONTACT LOCATION.
- 6 TOLERANCE NON-CUMULATIVE.
- 7 POINT OF CONTACT DIMENSION.
- 8 POINT OF MEASUREMENT DIMENSION FOR PLATING THICKNESS (INSIDE CONTACT BEAMS).
- 9 TYCO LOGO AND CSA LOGO ARE MOLDED INTO THE HOUSING.
- 10 DUPLEX PLATED: .000030 GOLD IN CONTACT AREA, .000150-.000300 MATTE TIN ON SOLDER LEADS, ALL OVER .000050 MIN NICKEL.
- 11 ROHS 2002/95/EC COMPLIANT.
- 12 OBSOLETE PARTS: OBSOLETE CIS STREAMLINING PER D.RENAUD/D.SINISI

12	OBSOLETE	10	20.32 [.800]	17.78 [.700]	16	5-535994-1 11
		3	20.32 [.800]	17.78 [.700]	16	535994-1
	FINISH	A	B	NO OF POSN	PART NUMBER	

THIS DRAWING IS A CONTROLLED DOCUMENT.		DIN KATE HELM 12APR91	Tyco Electronics Corporation Harrisburg, Pa 17105-3608	
DIMENSIONS: mm [INCHES]	TOLERANCES UNLESS OTHERWISE SPECIFIED:	APVD	NAME	RESTRICTED TO
0 PLC ± -	1 PLC ± -	PRODUCT SPEC	AMPMODU MOD II RCPT ASSY	
2 PLC ± -	3 PLC ± .13[.005]	APPLICATION SPEC	DBL-ROW,.100 CL CLSD ENTRY	
4 PLC ± -	ANGLES ± -	SIZE	SHORT PT-OF-CONT, .145 SOLDER LEAD	
MATERIAL	FINISH	WEIGHT	SCALE	SHEET
1 2	3 10	A1 00779 C=535994	4:1	1 OF 1
CUSTOMER DRAWING		REV	D1	