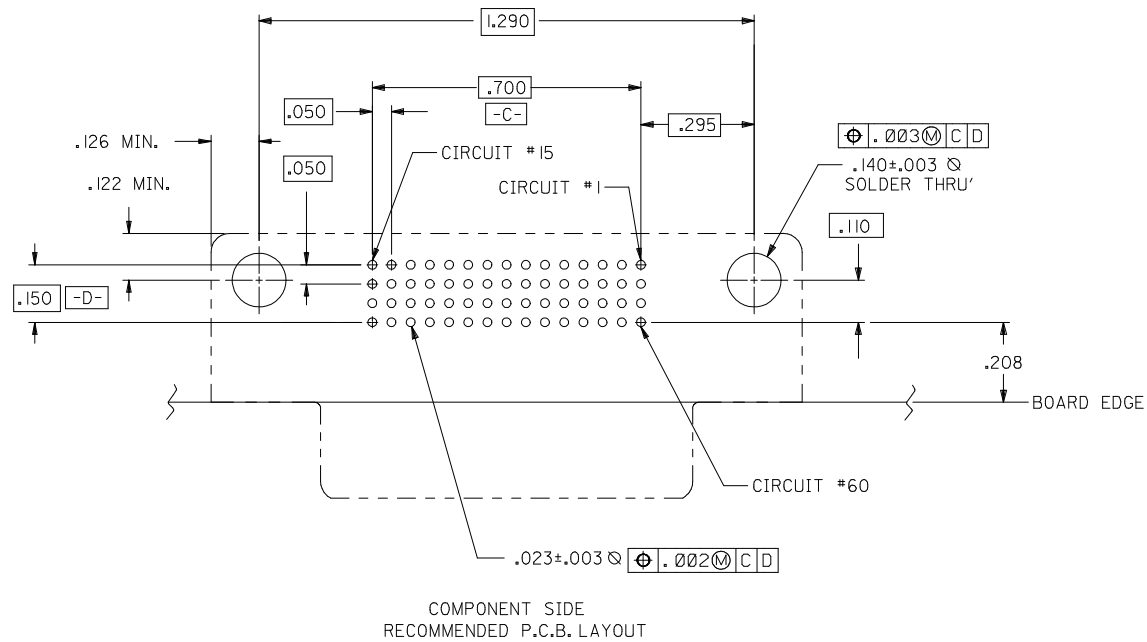
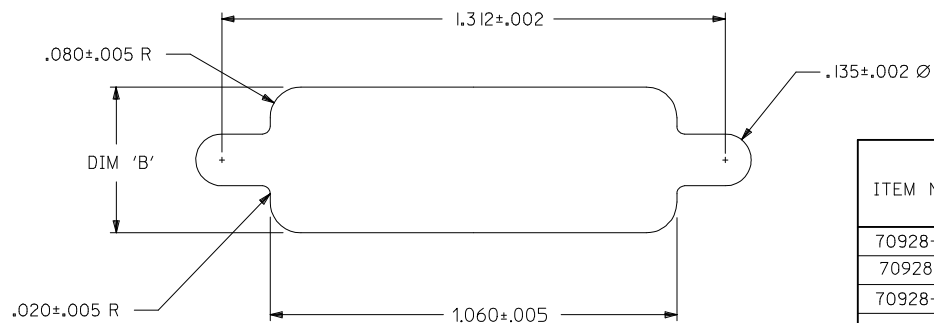


- NOTES: 1) MATERIALS:
 HOUSING AND MOLDED STICK: GLASS FILLED POLYMER, 94V-0, COLOR BLACK.
 TERMINALS: COPPER ALLOY .010±.0005 THK.
 OUTER SHELL: DEEP DRAWN STEEL, .016/(0.40) THICK.
 HEXAGONAL SCREWLOCK: STEEL.
- 2) PLATING :
TERMINALS (SEE CHART TO DETERMINE WHICH PART NUMBER HAS WHICH PLATING):
30 GOLD SELECTIVE GOLD (Au) IN THE CONTACT AREA:
 THICKNESS=30 MICROINCHES/(0.76 MICROMETERS) MINIMUM;
 SELECTIVE TIN (Sn) ALLOY IN THE PC TAIL AREA:
 THICKNESS=100 MICROINCHES/(2.54 MICROMETERS) MINIMUM;
 NICKEL (Ni) UNDERPLATE OVER ENTIRE PIN.
GOLD FLASH SELECTIVE GOLD (Au) FLASH IN THE CONTACT AREA
 SELECTIVE TIN (Sn) ALLOY IN THE PC TAIL AREA:
 THICKNESS=100 MICROINCHES/(2.54 MICROMETERS) MINIMUM;
 NICKEL (Ni) UNDERPLATE OVER ENTIRE PIN.
OUTER SHELL: 150 MICROINCHES/(3.81 MICROMETERS) MINIMUM OF TIN (Sn)
 OVER 50 MICROINCHES/(1.27 MICROMETERS) MINIMUM OF
 NICKEL (Ni) OVERALL.
- 3) CONFORMS TO PRODUCT SPECIFICATION PS-70928.
 4) THREAD GAGE MAY REQUIRE UP TO 1 IN.-LB. OF TORQUE DURING GAGING PROCESS.
 5) PART COMPLIES WITH CLASS B OF COSMETIC SPECIFICATION PS-45499-002

| | | | | | | | | | |
|--|--------------------------------------|---------------------------------------|--------|---|--------------------|--|----------------------|------------------------------|--|
| MOD PANEL CUT-OUT EC NO: UCP2012-0335 DRW:DMORGAN 2011/08/12 CHKD:MPOFF 2014/04/11 APPR:SMILLER 2014/05/12 | QUALITY SYMBOLS ▽=0 ▽=0 ▽=0 | GENERAL TOLERANCES (UNLESS SPECIFIED) | | DIMENSION STYLE INCH ONLY | | SCALE 4:1 | DESIGN UNITS INCH | THIRD ANGLE PROJECTION | |
| | | mm | INCH | DRAWN BY RKADAMS | DATE 2004/07/26 | TITLE SALES ASSEMBLY 60 CKT LFH ASSEMBLY RIGHT ANGLE RECEPTACLE | | DOCUMENT NO. SD-70928-001 | |
| REV | DESCRIPTION | 4 PLACES | ± .010 | 3 PLACES | ± .010 | CHECKED BY BBARKER | DATE 2004/07/26 | APPROVED BY SMILLER | |
| | | 2 PLACES | ± .010 | 1 PLACE | ± .010 | DATE 2004/07/26 | | MATERIAL NO. | |
| | | 0 PLACE | ± .010 | ANGULAR ±1/2° | | SEE TABLE | | SHEET NO. 1 OF 2 | |
| DRAFT WHERE APPLICABLE MUST REMAIN WITHIN DIMENSIONS | | SIZE C | | THIS DRAWING CONTAINS INFORMATION THAT IS PROPRIETARY TO MOLEX INCORPORATED AND SHOULD NOT BE USED WITHOUT WRITTEN PERMISSION | | | | | |



COMPONENT SIDE
RECOMMENDED P.C.B. LAYOUT

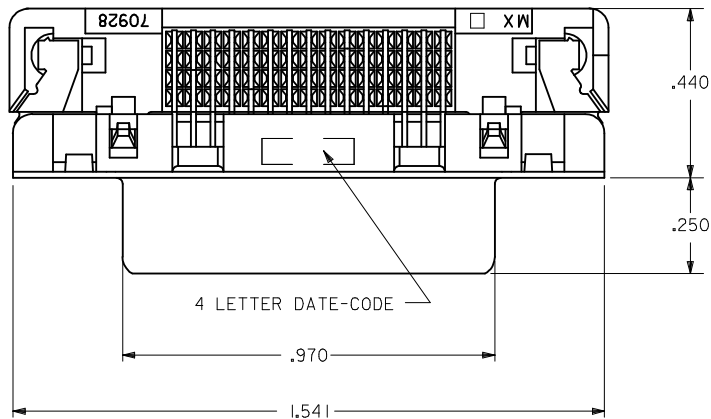


RECOMMENDED PANEL CUT-OUT

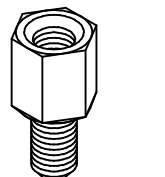
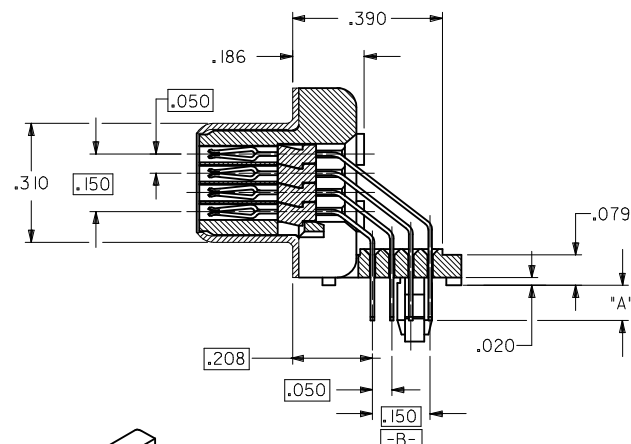
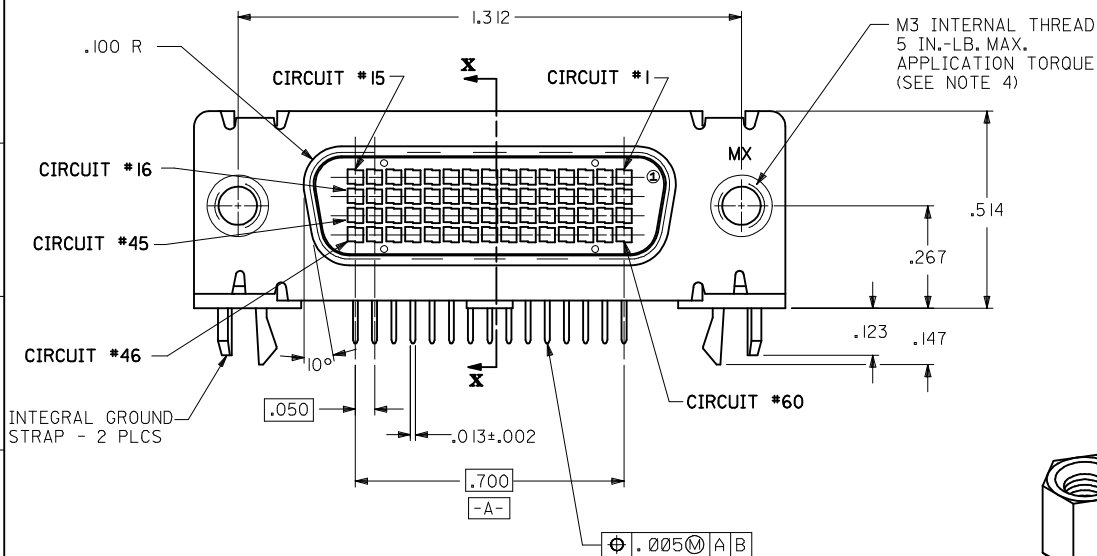
| DIM. 'B' | PANEL THICKNESS |
|-----------|-----------------|
| .400±.005 | .039 |
| .420±.005 | .064 |

| ITEM NUMBER | DIMENSION 'A' | PLATING (SEE NOTE 2) | HEXAGONAL SCREWLOCKS PACKAGED WITH CONNECTORS | SCREWLOCK ITEM NUMBER (SEE SD-70982-****) | PACKAGED PER PACKAGING SPECIFICATION |
|-------------|---------------|----------------------|---|---|--------------------------------------|
| 70928-2020 | .079±.010 | 30 GOLD | NO | _____ | PK-70873-0291 |
| 70928-2021 | .092±.010 | 30 GOLD | NO | _____ | PK-70873-0291 |
| 70928-2022 | .104±.010 | 30 GOLD | NO | _____ | PK-70873-0291 |
| | .079±.010 | 30 GOLD | YES | 70982-1003; 4-40 INTERNAL THD | PK-70873-0686 |
| 70928-2025 | .079±.010 | 30 GOLD | YES | 70982-1004; M-3 INTERNAL THD | PK-70873-0686 |
| 70928-2027 | .125±.010 | 30 GOLD | NO | _____ | PK-70873-0291 |
| | .092±.010 | 30 GOLD | YES | 70982-1003; 4-40 INTERNAL THD | PK-70873-0686 |
| | .092±.010 | GOLD FLASH | NO | _____ | PK-70873-0291 |
| | .092±.010 | GOLD FLASH | YES | 70982-1003; 4-40 INTERNAL THD | PK-70873-0686 |

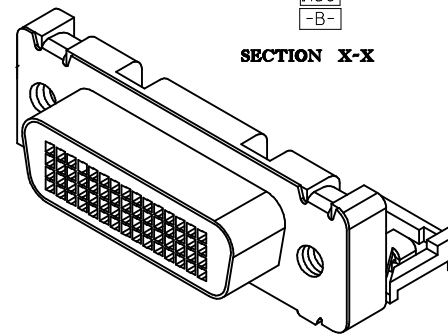
| | | | | | | |
|---|---------------------|--|---|------------------------|---------------------|------------------------|
| SEE SHEET 1 EC NO: UCP2012-0335 DRW:DMORGAN 2011/08/12 CHK:DMPOFF 2014/04/11 APPR:SMILLER 2014/05/12 REV: | QUALITY SYMBOLS | GENERAL TOLERANCES (UNLESS SPECIFIED) | DIMENSION STYLE | SCALE | DESIGN UNITS | THIRD ANGLE PROJECTION |
| | ▽=0 | mm INCH | INCH ONLY | 4:1 | INCH | |
| | ▽=0 | 4 PLACES ± --- ± --- | DRAWN BY | DATE | TITLE | |
| | ▽=0 | 3 PLACES ± --- ±.010 | RKADAMS | 2004/07/26 | SALES ASSEMBLY | |
| | | 2 PLACES ± --- ± --- | CHECKED BY | DATE | 60 CKT LFH ASSEMBLY | |
| | 1 PLACE ± --- ± --- | BBARKER | 2004/07/26 | RIGHT ANGLE RECEPTACLE | | |
| | 0 PLACE ± --- ± --- | APPROVED BY | DATE | molex | | |
| | | SMILLER | 2004/07/26 | SD-70928-001 | | |
| | | MATERIAL NO. | DOCUMENT NO. | SHEET NO. | | |
| | | ANGULAR ±1/2° | SEE TABLE | 2 OF 2 | | |
| | | DRAFT WHERE APPLICABLE MUST REMAIN WITHIN DIMENSIONS | THIS DRAWING CONTAINS INFORMATION THAT IS PROPRIETARY TO MOLEX INCORPORATED AND SHOULD NOT BE USED WITHOUT WRITTEN PERMISSION | | | |



| ITEM NUMBER | DIMENSION "A" | PLATING (SEE NOTE 2) | HEXAGONAL SCREWLOCKS PACKAGED WITH CONNECTORS | SCREWLOCK ITEM NUMBER (SEE SD-70982-****) | PACKAGING PER PACKAGING SPECIFICATION |
|-------------|---------------|----------------------|---|---|---------------------------------------|
| 70928-2000 | .079±.010 | 30 GOLD | NO | _____ | PK-70873-0291 |
| 70928-2001 | .092±.010 | 30 GOLD | NO | _____ | PK-70873-0291 |
| 70928-2002 | .104±.010 | 30 GOLD | NO | _____ | PK-70873-0291 |
| 70928-2003 | .079±.010 | 30 GOLD | YES | 70982-1003; 4-40 INTERNAL THD | PK-70873-0686 |
| 70928-2005 | .079±.010 | 30 GOLD | YES | 70982-1004; M-3 INTERNAL THD | PK-70873-0686 |
| 70928-2007 | .125±.010 | 30 GOLD | NO | _____ | PK-70873-0291 |
| 70928-2008 | .092±.010 | 30 GOLD | YES | 70982-1003; 4-40 INTERNAL THD | PK-70873-0686 |
| 70928-2009 | .092±.010 | GOLD FLASH | NO | _____ | PK-70873-0291 |
| 70928-2010 | .092±.010 | GOLD FLASH | YES | 70982-1003; 4-40 INTERNAL THD | PK-70873-0686 |



OPTIONAL HEXAGONAL SCREWLOCK

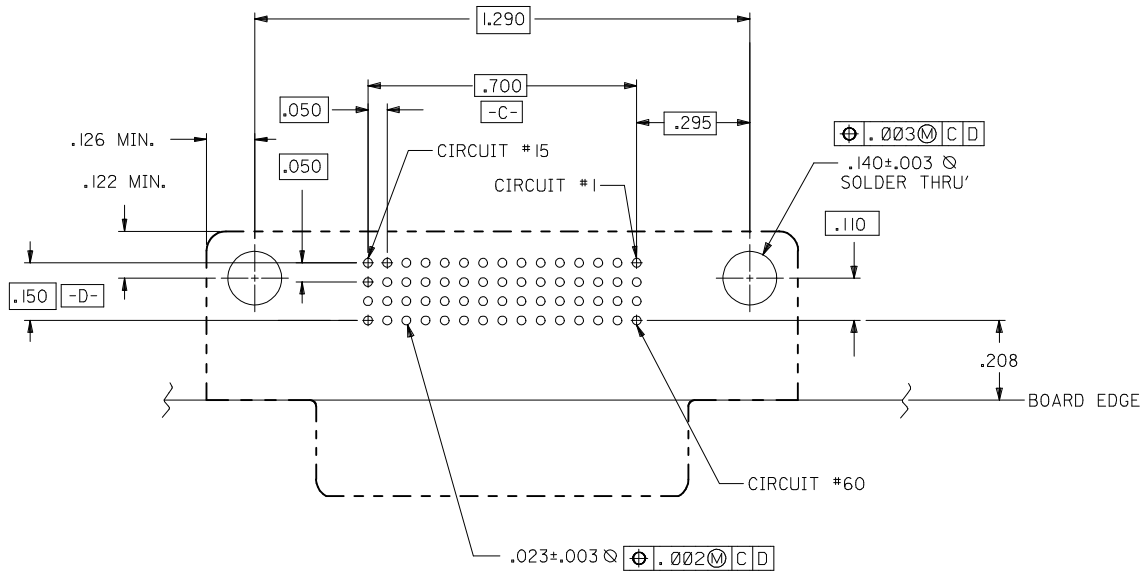


SECTION X-X

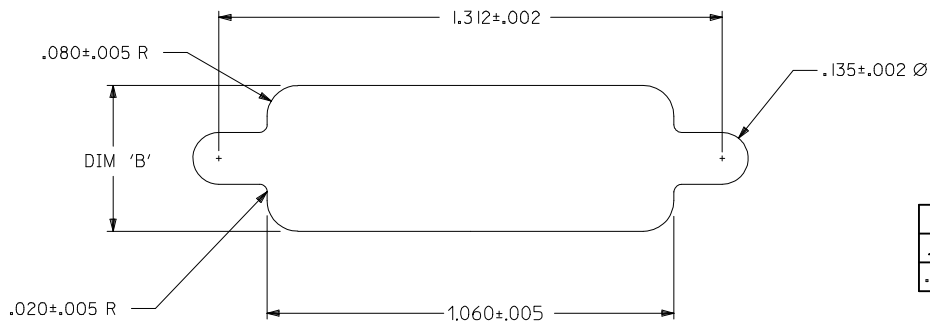
NOTES:

- MATERIALS:
HOUSING AND MOLDED STICK: GLASS FILLED POLYMER, 94V-0, COLOR BLACK.
TERMINALS: COPPER ALLOY .010±.0005 THICK.
OUTER SHELL: DEEP DRAWN STEEL, .016(0.40) THICK.
HEXAGONAL SCREWLOCK: STEEL.
- PLATING:
TERMINALS (SEE CHART TO DETERMINE WHICH PART NUMBER HAS WHICH PLATING):
30 GOLD -- 30 MICRONS(0.76 MICROMETERS) MINIMUM SELECTIVE GOLD (Au) IN THE CONTACT AREA;
100 MICRONS(2.54 MICROMETERS) MINIMUM SELECTIVE TIN (Sn) IN PC TAIL AREA;
OVER NICKEL (Ni) UNDERPLATE OVERALL.
GOLD FLASH -- SELECTIVE GOLD (Au) FLASH IN THE CONTACT AREA;
100 MICRONS(2.54 MICROMETERS) MINIMUM SELECTIVE TIN (Sn) IN PC TAIL AREA;
OVER NICKEL (Ni) UNDERPLATE OVERALL.
OUTERSHELL: 150 MICRONS(3.81 MICROMETERS) MINIMUM TIN (Sn) OVER 50 MICRONS(1.27 MICROMETERS) MINIMUM NICKEL (Ni) OVERALL.
- CONFORMS TO PRODUCT SPECIFICATION PS-70928.
- THREAD GAGE MAY REQUIRE UP TO 1 IN.-LB. OF TORQUE DURING GAGING PROCESS.
- PART COMPLIES WITH CLASS B OF COSMETIC SPECIFICATION PS-45499-002

| | | | | | | | | | |
|---|--------------------------------------|---------------------------------------|------|------------------------------|--------------------|--|----------------------|------------------------|--|
| MOD PANEL CUT-OUT EC NO: UCP2012-0335 DRAWING MORGAN 2011/08/12 CHKD: MPOFF 2014/04/11 APPR: SMILLER 2014/05/17 | QUALITY SYMBOLS ▽=0 ▽=0 ▽=0 | GENERAL TOLERANCES (UNLESS SPECIFIED) | | DIMENSION STYLE INCH ONLY | | SCALE 4:1 | DESIGN UNITS INCH | THIRD ANGLE PROJECTION | |
| | | mm | INCH | DRAWN BY MOS | DATE 1993/02/08 | TITLE .050" PITCH LFH 60 CKT RIGHT ANGLE I/O RECEPTACLE | | | |
| 4 PLACES ± --- ± --- | | 3 PLACES ± --- ± .010 | | CHECKED BY CAB | DATE 1993/02/08 | DOCUMENT NO. SDA-70928-20** | | | |
| 2 PLACES ± 0.25 ± .015 | | 1 PLACE ± 0.38 ± --- | | APPROVED BY CAB | DATE 1993/02/08 | SHEET NO. 1 OF 2 | | | |
| 0 PLACE ± --- ± --- | | ANGULAR ±1/2° | | MATERIAL NO. SEE TABLE | | THIS DRAWING CONTAINS INFORMATION THAT IS PROPRIETARY TO MOLEX. INCORPORATED AND SHOULD NOT BE USED WITHOUT WRITTEN PERMISSION | | | |
| DRAFT WHERE APPLICABLE MUST REMAIN WITHIN DIMENSIONS | | SIZE C | | | | | | | |



COMPONENT SIDE
RECOMMENDED P.C.B. LAYOUT



RECOMMENDED PANEL CUT-OUT

| DIM. 'B' | PANEL THICKNESS |
|-----------|-----------------|
| .400±.005 | .039 |
| .420±.005 | .064 |

| SEE SHEET 1 EC NO: UCP2012-0335 DRWINDMORGAN 2011/08/12 CHKD:MPOFF 2014/04/11 APPR:SMILLER 2014/05/12 | QUALITY SYMBOLS ▽=0 ▽=0 ▽=0 | GENERAL TOLERANCES (UNLESS SPECIFIED) <table border="1"> <thead> <tr> <th></th> <th>mm</th> <th>INCH</th> </tr> </thead> <tbody> <tr> <td>4 PLACES</td> <td>±.005</td> <td>±.0002</td> </tr> <tr> <td>3 PLACES</td> <td>±.008</td> <td>±.0003</td> </tr> <tr> <td>2 PLACES</td> <td>±.015</td> <td>±.0006</td> </tr> <tr> <td>1 PLACE</td> <td>±.038</td> <td>±.0015</td> </tr> <tr> <td>0 PLACE</td> <td>±.076</td> <td>±.0030</td> </tr> </tbody> </table> | | mm | INCH | 4 PLACES | ±.005 | ±.0002 | 3 PLACES | ±.008 | ±.0003 | 2 PLACES | ±.015 | ±.0006 | 1 PLACE | ±.038 | ±.0015 | 0 PLACE | ±.076 | ±.0030 | DIMENSION STYLE INCH ONLY DRAWN BY: MOS DATE: 1993/02/08 CHECKED BY: CAB DATE: 1993/02/08 APPROVED BY: CAB DATE: 1993/02/08 | SCALE: 4:1 DESIGN UNITS: INCH THIRD ANGLE PROJECTION | TITLE: .050" PITCH LFH 60 CKT RIGHT ANGLE I/O RECEPTACLE molex |
|--|--|---|--|-----------------------------|------|----------|-------|--------|----------|-------|--------|----------|-------|--------|---------|-------|--------|---------|-------|--------|---|--|--|
| | | mm | INCH | | | | | | | | | | | | | | | | | | | | |
| | 4 PLACES | ±.005 | ±.0002 | | | | | | | | | | | | | | | | | | | | |
| | 3 PLACES | ±.008 | ±.0003 | | | | | | | | | | | | | | | | | | | | |
| 2 PLACES | ±.015 | ±.0006 | | | | | | | | | | | | | | | | | | | | | |
| 1 PLACE | ±.038 | ±.0015 | | | | | | | | | | | | | | | | | | | | | |
| 0 PLACE | ±.076 | ±.0030 | | | | | | | | | | | | | | | | | | | | | |
| | DRAFT WHERE APPLICABLE MUST REMAIN WITHIN DIMENSIONS | MATERIAL NO.: SEE TABLE | DOCUMENT NO.: SDA-70928-20** | SHEET NO.: 2 OF 2 | | | | | | | | | | | | | | | | | | | |
| | | SIZE: C THIS DRAWING CONTAINS INFORMATION THAT IS PROPRIETARY TO MOLEX INCORPORATED AND SHOULD NOT BE USED WITHOUT WRITTEN PERMISSION | | | | | | | | | | | | | | | | | | | | | |