

MODEL: RC-1206
PRODUCT: Dynamic Receiver
EDITION: A/2016

THIS SPECIFICATION COVERS OUR PRODUCT OF DYNAMIC RECEIVER UNIT FOR MOBILE TELEPHONE USE

RECEIVER ELECTROACOUSTIC CHARACTERISTICS

test set up	Measuring conditions and procedures shown in Fig. 1
ac impedance	$32\Omega \pm 15\%$ (@1KHz 1V) without baffle
sound pressure level	$110 \pm 3\text{dB SPL}$ @1.0KHz Sine Wave 179mV with IEC318($0\text{dB SPL} = 20\mu\text{Pa}$)
measuring condition	1mW (Sine wave) with baffle shown in Fig.1
frequency response curve	As shown in Fig. 2
rated noise power	10mW normal at a white noise (10mW,200-3.4KHz) for one minute
short term max power	20mW
operation test	Must be free of audible noise (buzzes and rattles) (200 ~ 3.4KHz frequency range ,input level up to 0.56Vrms)
distortion	Less than 10% @1KHz 179mV
dimension	12 x 6 x 3 mm

GENERAL SPECIFICATIONS

operating temperature range	$-20^{\circ}\text{C} \sim +60^{\circ}\text{C}$
standard test conditions	
temperature	$17^{\circ}\text{C} \sim 25^{\circ}\text{C}$
relative humidity	45%~80%(RH)

RELIABILITY TESTS

The sound pressure as specified shall neither deviate more than $\pm 3\text{dB}$ from the initial value, nor have any significant damage after any of following testing.

HIGH TEMPERATURE TEST

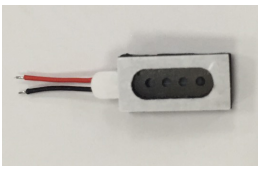
high temperature	$+60 \pm 2^{\circ}\text{C}$
duration	96 hours

LOW TEMPERATURE TEST

low temperature	$-30 \pm 2^{\circ}\text{C}$
duration	96 hours

HEAT SHOCK TEST

high temperature	$+60 \pm 2^{\circ}\text{C}$
low temperature	$-30 \pm 2^{\circ}\text{C}$
changeover time	<30 seconds
duration	1 hour
cycle	100



MODEL: RC-1206
PRODUCT: Dynamic Receiver
EDITION: A/2016

RELIABILITY TESTS (Continued)

HUMIDITY TEST

temperature	+ 40±2°C
relative humidity	90%~95%
duration	96 hours

TEMPERATURE CYCLE TEST

temperature	-20°C +60°C
duration	45minutes 45minutes
temperature gradient	1~3°C/min
cycle	25

DROP TEST

mounted with dummy set mass	100 g
height	1.5 m
cycle	6(1 each plain) Onto the concrete board

LOAD TEST

Speaker mode	white noise (EIA filter)for 96 hour@10mW input power
--------------	--

MEASURING METHOD (SPEAKER MODE)

STANDARD

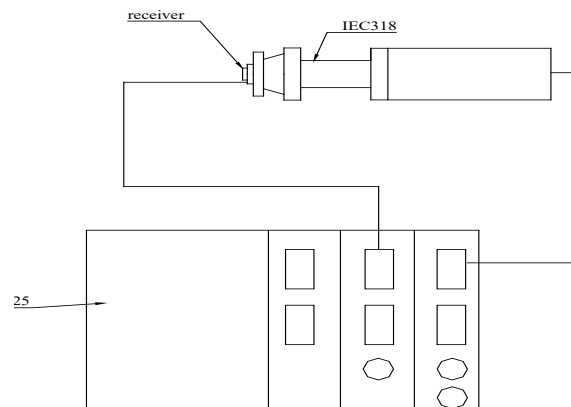
TEST CONDITION

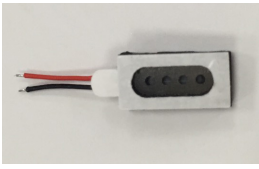
temperature	15 ~ 35°C
relative humidity	45% ~ 85%
atmospheric pressure	860mbar to 1060mbar

STANDARD TEST FIXTURE

input power	179mW
zero level	-dB
mode	TSR
potentiometer range	50dB
sweep time	0.2sec

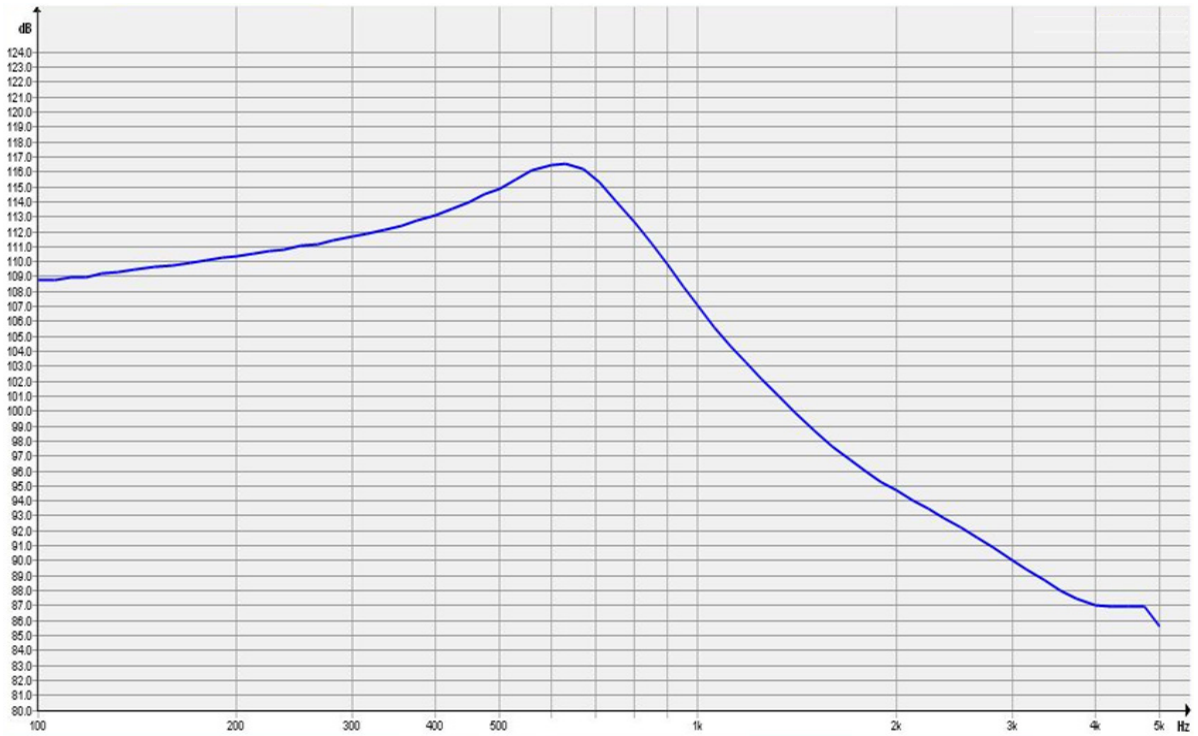
MEASURING CONDITIONS (Fig. 1)





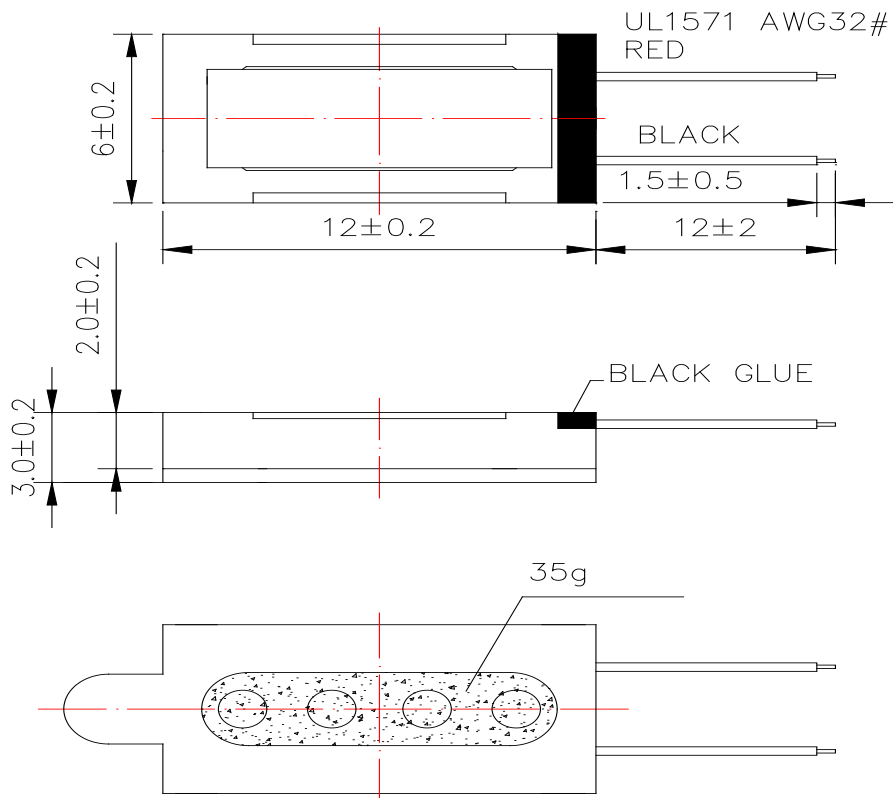
MODEL: RC-1206
PRODUCT: Dynamic Receiver
EDITION: A/2016

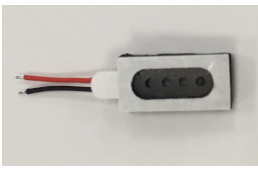
FREQUENCY RESPONSE CURVE (Fig. 2)



DIMENSIONS

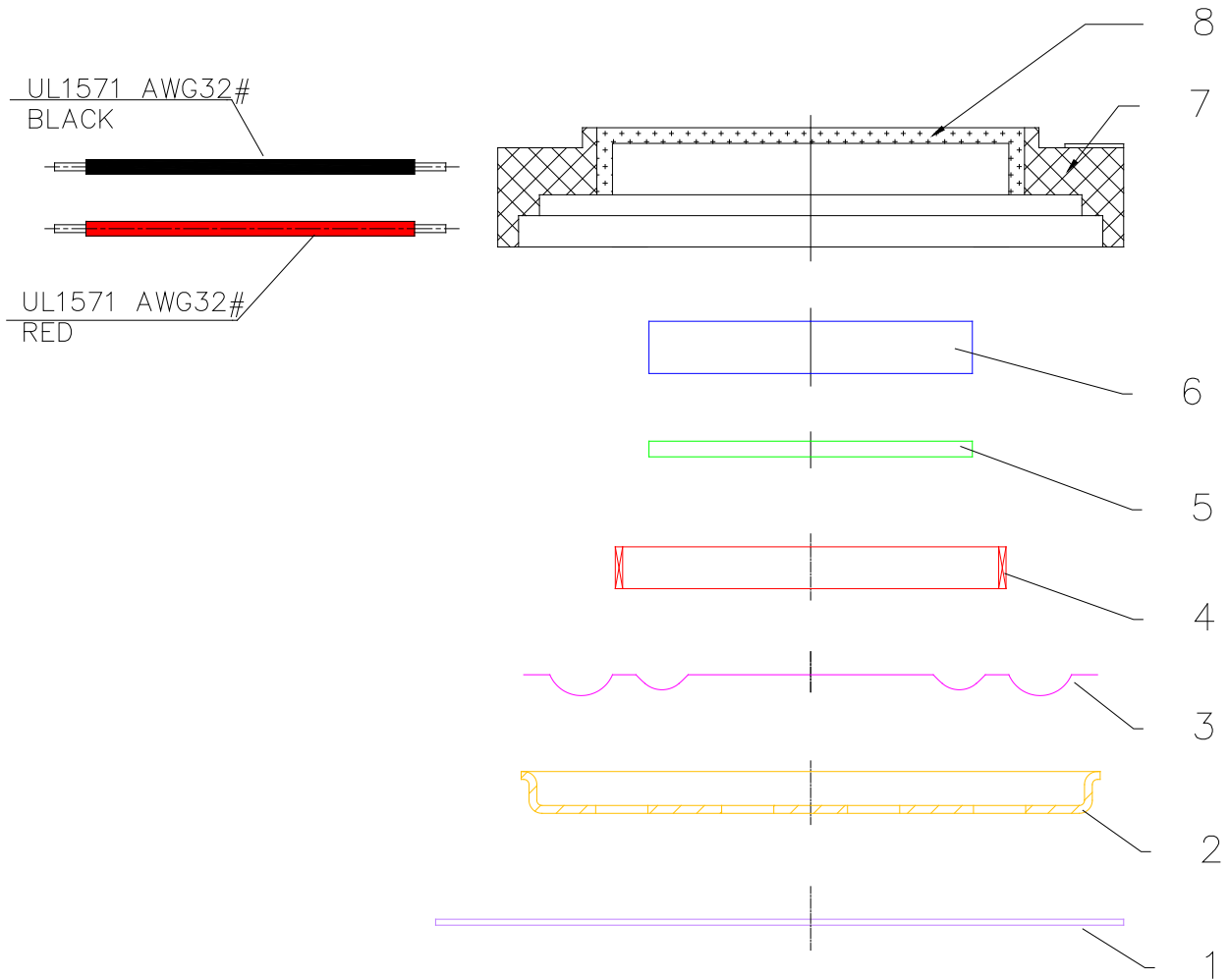
Tolerance: ± 0.5 (unit: mm)



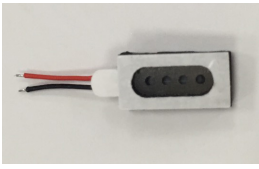


MODEL: RC-1206
PRODUCT: Dynamic Receiver
EDITION: A/2016

EXPLODED VIEW



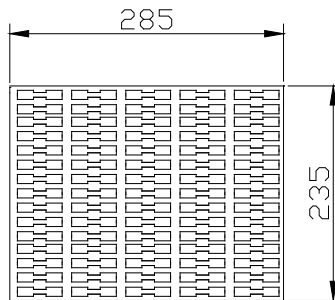
no.	part name	material	quantity
1	Cap	SUS 304	1
2	Diaphragm	PEI	1
3	Voice Coil	Copper wire	1
4	Plate	SPCC	1
5	Magnet	Nd Fe B	1
6	Frame	PBT	1
7	Yoke	Spce	1
8	Black Wire	UL1571 / AWG32	1
9	Red Wire	UL1571 /AWG32	1



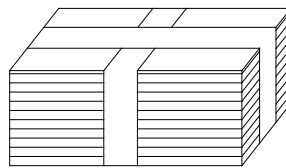
MODEL: RC-1206
PRODUCT: Dynamic Receiver
EDITION: A/2016

PACKING

150PCS



$$150 \times 10 = 1500\text{PCS}$$



$$1500 \times 5 = 7500\text{PCS}$$

