

MICRO SWITCH

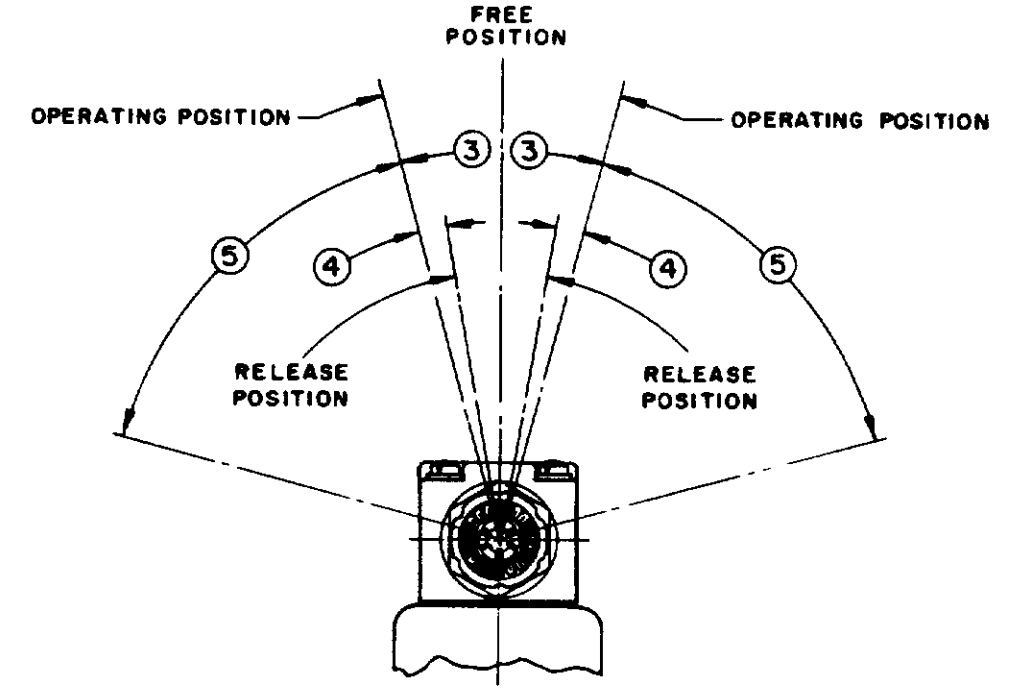
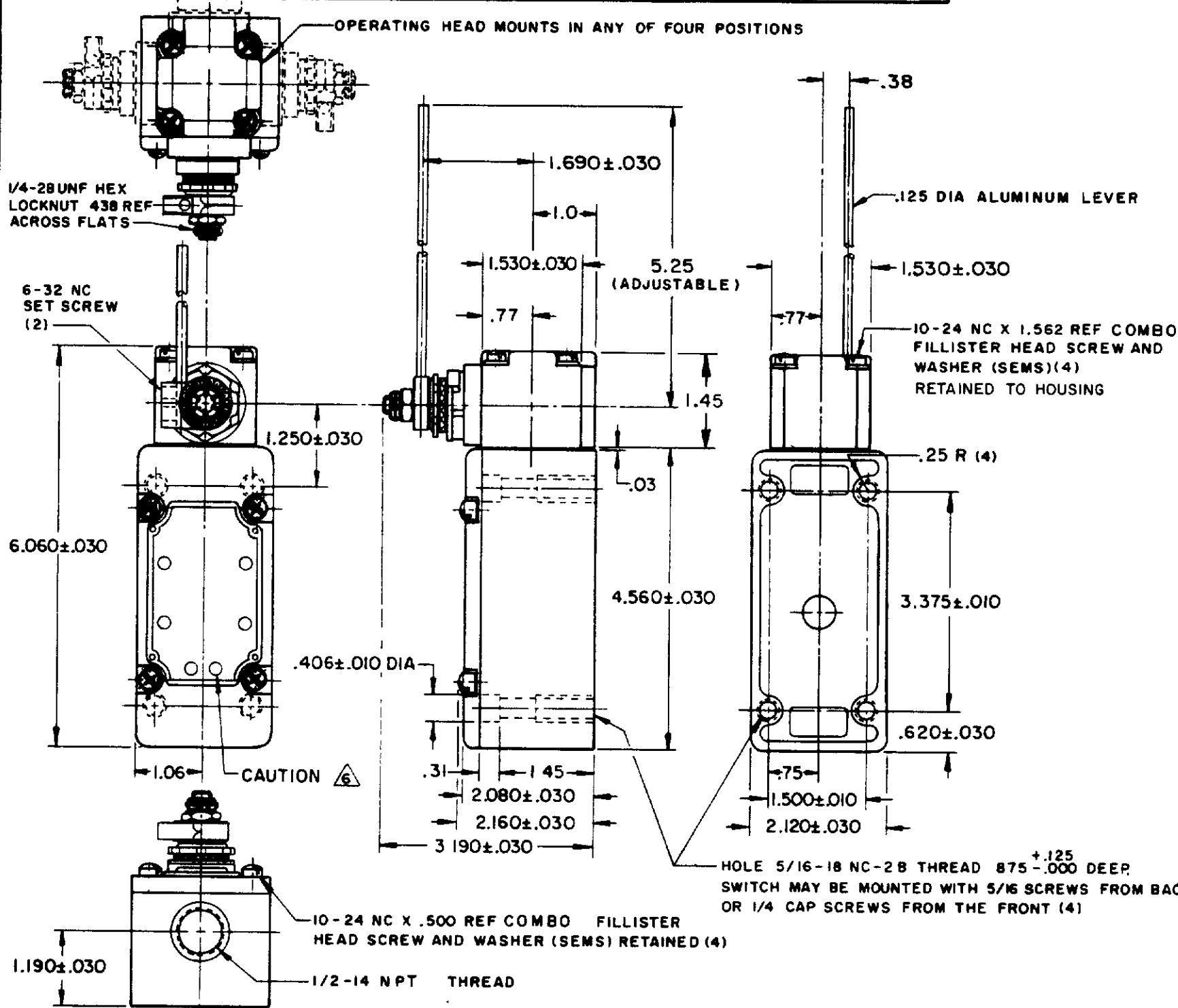
A DIVISION OF MINNEAPOLIS-HONEYWELL REGULATOR COMPANY
 FEDERAL MANUFACTURING CODE 91929

SWITCH - ENCLOSED

CATALOG LISTING
151ML10-E1

M

OPERATING HEAD MOUNTS IN ANY OF FOUR POSITIONS



NOTES

- 1 - IT IS ESSENTIAL THAT THE CONDUIT OPENING BE PROPERLY SEALED IN ORDER TO MAINTAIN THE EXPLOSION PROOF PROPERTIES
- ② - SWITCH IS ASSEMBLED FOR ACTUATION IN CLOCKWISE DIRECTION
- ③ - TO CONVERT SWITCH FOR ACTUATION IN THE COUNTER-CLOCKWISE DIRECTION ONLY, REMOVE THE HEAD AND SLIDE THE CAM TOWARD THE REAR OF THE HEAD SUFFICIENTLY TO DISENGAGE FROM THE FLATS ON THE SHAFT. ROTATE THE CAM 180° AND RE-ENGAGE THE CAM WITH THE FLATS ON THE SHAFT
- 4 - SHAFT MAY BE ADJUSTED TO ACTUATE THE SWITCH IN THE CLOCKWISE DIRECTION ONLY OR THE COUNTER-CLOCKWISE DIRECTION ONLY ② ③
- 5 - IN ORDER TO MAINTAIN THE EXPLOSION PROOF PROPERTIES OF THIS UNIT DO NOT OBSTRUCT THE HOLES IN THE COVER PLATE
- 6 - LISTED BY UNDERWRITERS LABORATORY, INC. FOR USE IN CLASS 1, GROUPS C AND D VAPOR-AIR ATMOSPHERES, AND CLASS 2 GROUPS E, F AND G, DUST-AIR ATMOSPHERES
- 7 - LEVER MAY BE POSITIVELY LOCKED AT INTERVALS OF APPROX 0.4° (870 POSITIONS)

DRAWING NUMBER
151ML10-E1
 ISSUE
289
 REVISIONS
 A COS2194
 J A P
 23 SEPT 85
 B DD58367
 JAS
 12 NOV 85
 C 895051C
 T A D
 6 JAN 86
 D CO 63739
 D J S
 19 JUN 86
 E 00742 87
 G J W
 23 FEB 88
 CHECK
 J A P 23 SEPT 83
 J A P 23 SEPT 83
 FG-80978-003

THIS DRAWING COVERS A PROPRIETARY ITEM AND IS THE PROPERTY OF MICRO SWITCH, A DIVISION OF MINNEAPOLIS-HONEYWELL REGULATOR CO. THIS DRAWING IS NOT TO BE COPIED OR USED WITHOUT THE APPROVAL OF MICRO SWITCH

CHARACTERISTICS	ELECTRICAL DATA	SCALE 1/2 TO 1
OPERATING FORCE ----- 5 OZ MAX	CONTACT ARRANGEMENT	DO NOT SCALE PRINT
FULL OVERTRAVEL FORCE ----- 7 OZ MAX	TWO CIRCUIT	UNLESS OTHERWISE SPECIFIED
RELEASE FORCE ----- 3/4 OZ MIN	DOUBLE THROW DOUBLE BREAK	DIMENSIONS ARE IN INCHES
PRETRAVEL ----- ③ 15° MAX		TOLERANCES ARE:
DIFFERENTIAL TRAVEL ----- ④ 7° MAX		ONE PLACE (.0) ± .030
OVERTRAVEL ----- ⑤ 60° MIN		TWO PLACE (.00) ± .015
SWITCH-REPLACEMENT ----- 1MNS	10 A-120, 240, OR 480 VAC	THREE PLACE (.000) ± .008
	1/2 HP-120 VAC, 1 HP-240 VAC	ANGLES ±
	0.8 A-115 VDC, 0.4 A-230 VDC	
	PILOT DUTY: 72 OVA- HEAVY DUTY	
	600 VAC MAX	

UL

WEIGHT