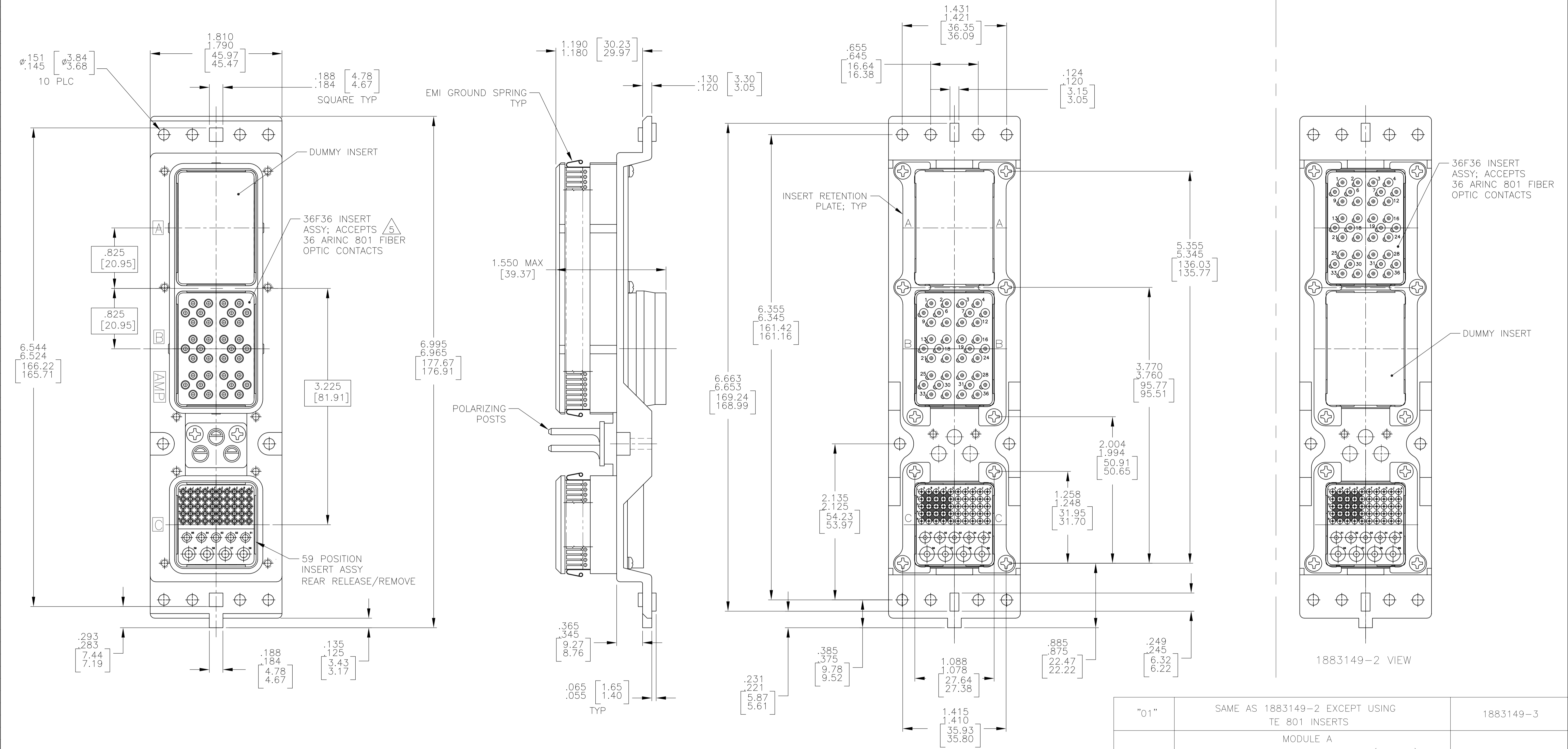


REVISONS		DATE	DN	APVD
F	LTR	DESCRIPTION		
G	REV PER ECO	14-008381	8-7-14	CT WB



- CONNECTOR DIMENSIONS ARE PER ARINC 600 SPECIFICATION.
- CONNECTOR IS SUPPLIED WITH CONTACTS (PER TABLE) NOT ASSEMBLED.
- KEYING SHOWN IN POSITION "01" FOR ILLUSTRATION ONLY. CONNECTORS SHIPPED WITH KEYING INSTALLED IN POSITION PER TABLE. FOR POSITION "00" KEYING HARDWARE SHIPPED UNASSEMBLED.
- MODULE B (36F36) IS SUPPLIED WITHOUT CONTACTS. MUST BE ORDERED SEPARATELY.
- DUST COVER IS INSTALLED BUT NOT SHOWN.

COMPONENT	MATERIAL	FINISH
SHELL	DIE CAST ALUMINUM PER ASTM-B-85	ELECTROLESS NICKEL PER MIL-C-26074
INSERT RETENTION PLATES	ALUMINUM ALLOY PER ASTM-B-209	ELECTROLESS NICKEL PER MIL-C-26074
SCREWS AND LOCKWASHERS	STAINLESS STEEL	PASSIVATED
POLARIZING POST	ZINC ALLOY PER ASTM-B-86	-
POLARIZING POST RETAINING PLATE	ALUMINUM ALLOY PER ASTM-B-209	BLUE ANODIZED PER MIL-A-8625
EMI GROUND SPRING	BERYLLIUM COPPER 172 (ALLOY 29)	ELECTRODEPOSITED NICKEL PER QQ-N-290
36F36 INSERT	THERMOSET OR THERMOPLASTIC PPS PER MIL-M-24519	-
59 POSITION INSERT	THERMOSET OR THERMOPLASTIC PPS PER MIL-M-24519	-
DUMMY INSERT	ALUMINUM ALLOY PER ASTM-B-85	ELECTROLESS NICKEL PER MIL-C-26074

KEYING POSITION	CONTACTS & FILLER PLUGS INCLUDED AND NOT INSTALLED	PART NUMBER
"01"	SAME AS 1883149-2 EXCEPT USING TE 801 INSERTS	1883149-3
"01"	MODULE A 203839-2 SZ 16 FILLER PLUG (QTY=22) MODULE C 208262-3 SZ 22 PIN CONTACT (QTY=35) 208273-2 SZ 12 SOCKET CONTACT (QTY=4) 1663767-5 SZ 22 FILLER PLUG (QTY=15) 1663767-6 SZ 20 FILLER PLUG (QTY=5) PURCHASED INSERTS USED IN THIS ASSEMBLY	1883149-2
"01"	MODULE C 208262-3 SZ 22 PIN CONTACT (QTY=50) 208270-2 SZ 16 SOCKET CONTACT (QTY=5) 208273-2 SZ 12 SOCKET CONTACT (QTY=4)	1883149-1

THIS DRAWING IS A CONTROLLED DOCUMENT.

DIMENSIONS: INCHES	TOLERANCES UNLESS OTHERWISE SPECIFIED:	0 PLC ± .005	1 PLC ± .005	2 PLC ± .005	3 PLC ± .005	4 PLC ± .005	ANGLES ± .005
--------------------	----------------------------------------	--------------	--------------	--------------	--------------	--------------	---------------

MATERIAL: SEE TABLE. FINISH: SEE TABLE.

WEIGHT: --. SIZE: A1.00779. DRAWING NO: 1883149. CUSTOMER DRAWING. SCALE: 1:1. SHEET: 1 OF 1. REV: G.

STE TE Connectivity
PLUG ASSY, SIZE 2, ARINC 600