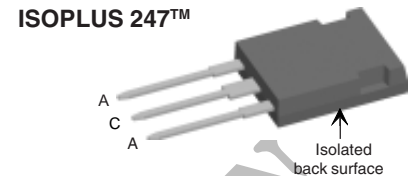
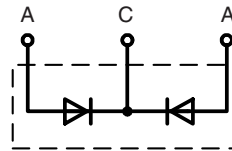


HiPerFRED™ Epitaxial Diode

with common cathode and soft recovery

$I_{FAV} = 2x30\text{ A}$
 $V_{RRM} = 300\text{ V}$
 $t_{rr} = 30\text{ ns}$

V_{RSM}	V_{RRM}	Type
V	V	
300	300	DSEC 60-03AR



A = Anode, C = Cathode

Symbol	Conditions	Maximum Ratings	
I_{FRMS}		70	A
I_{FAVM}	$T_C = 135^\circ\text{C}$; rectangular, $d = 0.5$	30	A
I_{FSM}	$T_{VJ} = 45^\circ\text{C}$; $t_p = 10\text{ ms}$ (50 Hz), sine	300	A
E_{AS}	$T_{VJ} = 25^\circ\text{C}$; non-repetitive $I_{AS} = 3\text{ A}$; $L = 180\text{ }\mu\text{H}$	1.2	mJ
I_{AR}	$V_A = 1.5 \cdot V_{R\text{ typ.}}$; $f = 10\text{ kHz}$; repetitive	0.3	A
T_{VJ}		-55...+175	$^\circ\text{C}$
T_{VJM}		175	$^\circ\text{C}$
T_{stg}		-55...+150	$^\circ\text{C}$
P_{tot}	$T_C = 25^\circ\text{C}$	165	W
F_C	mounting force with clip	20...120	N
V_{ISOL}	50/60 Hz, RMS, $t = 1\text{ minute}$, leads-to-tab	2500	V~
Weight	typical	6	g

Features

- International standard package
- Planar passivated chips
- Very short recovery time
- Extremely low switching losses
- Low I_{RM} -values
- Soft recovery behaviour
- Epoxy meets UL 94V-0
- Isolated and UL registered E153432

Applications

- Antiparallel diode for high frequency switching devices
- Antisaturation diode
- Snubber diode
- Free wheeling diode in converters and motor control circuits
- Rectifiers in switch mode power supplies (SMPS)
- Inductive heating
- Uninterruptible power supplies (UPS)
- Ultrasonic cleaners and welders

Advantages

- Avalanche voltage rated for reliable operation
- Soft reverse recovery for low EMI/RFI
- Low I_{RM} reduces:
 - Power dissipation within the diode
 - Turn-on loss in the commutating switch

Dimensions see Outlines.pdf

Symbol	Conditions	Characteristic Values	
		typ.	max.
I_R ①	$V_R = V_{RRM}$; $T_{VJ} = 25^\circ\text{C}$ $T_{VJ} = 150^\circ\text{C}$	10 1	μA mA
V_F ②	$I_F = 30\text{ A}$; $T_{VJ} = 150^\circ\text{C}$ $T_{VJ} = 25^\circ\text{C}$	0.91 1.25	V V
R_{thJC} R_{thCH}		0.25	K/W K/W
t_{rr}	$I_F = 1\text{ A}$; $-di/dt = 200\text{ A}/\mu\text{s}$ $V_R = 30\text{ V}$; $T_{VJ} = 25^\circ\text{C}$	30	ns
I_{RM}	$V_R = 100\text{ V}$; $I_F = 50\text{ A}$; $-di_F/dt = 100\text{ A}/\mu\text{s}$ $T_{VJ} = 100^\circ\text{C}$	7	A

Pulse test: ① Pulse Width = 5 ms, Duty Cycle < 2.0%

② Pulse Width = 300 μs , Duty Cycle < 2.0%

Data according to IEC 60747 and per diode unless otherwise specified

Recommended replacement:
DPG 60C300HJ

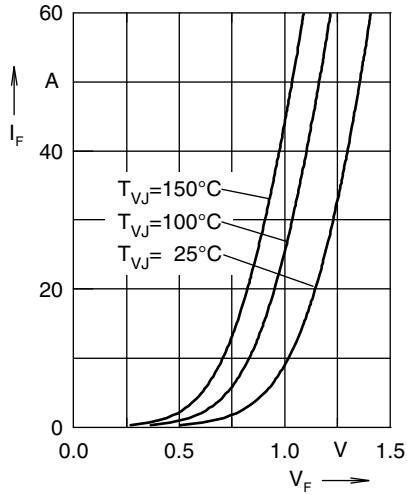


Fig. 1 Forward current I_F versus V_F

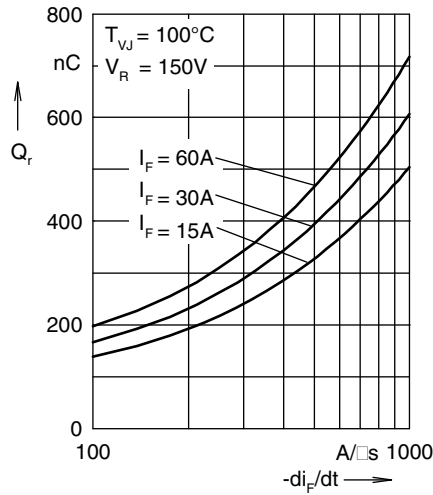


Fig. 2 Reverse recovery charge Q_r versus $-di_F/dt$

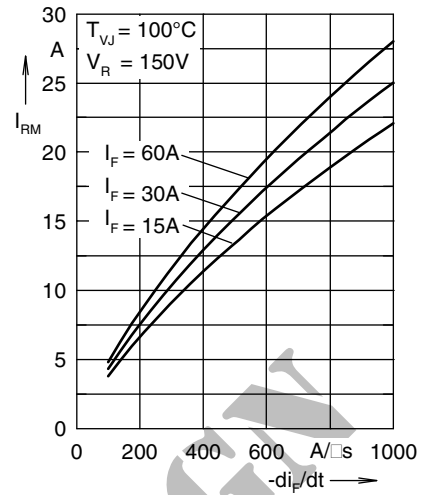


Fig. 3 Peak reverse current I_{RM} versus $-di_F/dt$

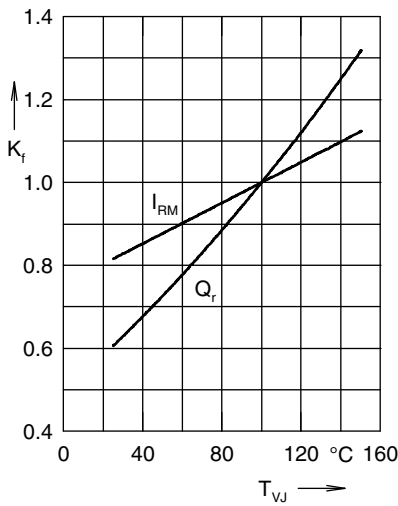


Fig. 4 Dynamic parameters Q_r , I_{RM} versus T_{VJ}

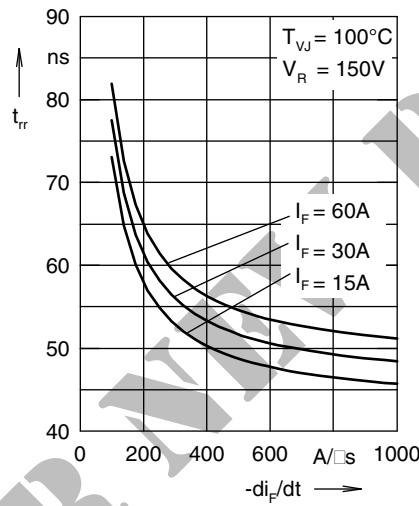


Fig. 5 Recovery time t_{tr} versus $-di_F/dt$

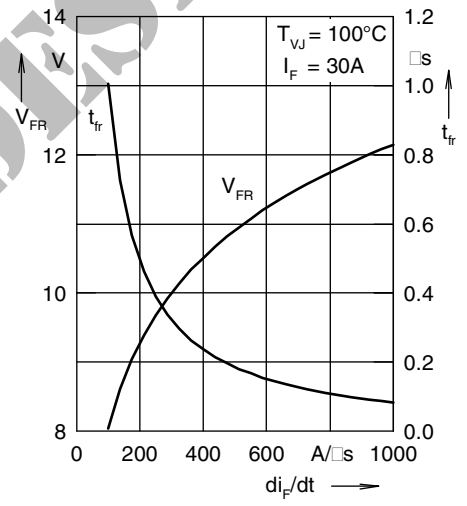


Fig. 6 Peak forward voltage V_{FR} and t_{tr} versus di_F/dt

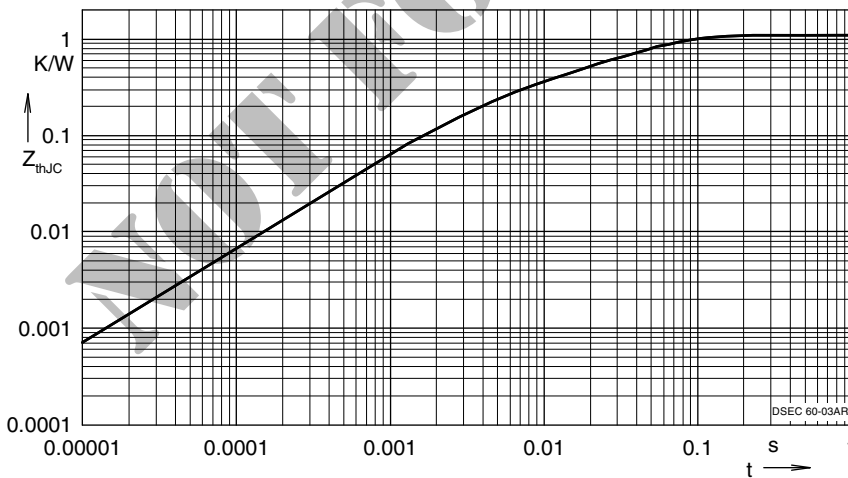


Fig. 7 Transient thermal resistance junction to case

Constants for Z_{thJC} calculation:

i	R_{thi} (K/W)	t_i (s)
1	0.368	0.0052
2	0.1417	0.0003
3	0.0295	0.0004
4	0.5604	0.0092

NOTE: Fig. 2 to Fig. 6 shows typical values