

QUARTER TURN KNOB LOCK (PLASTIC)



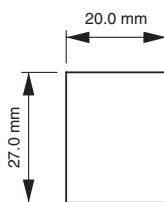
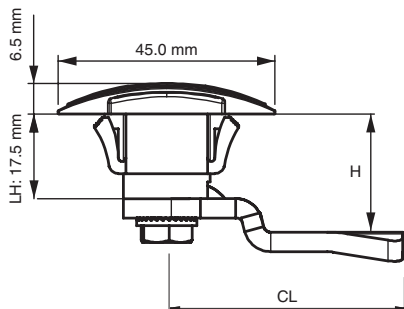
*Example with cam. Cam sold separately.

Specifications

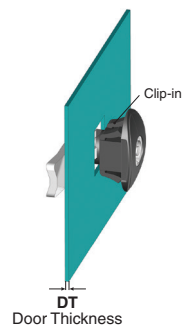
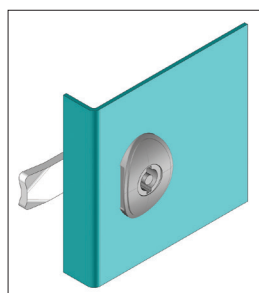
- Material:
 - Housing: Polyamide DIN-EN ISO 1043-1 PA6 GFR 30
 - Driver: Zinc Alloy (Zamak) or PA6 GFR 30
 - Cam: Steel or Plastic

Features

- Clip install for easy assembly
- Mounting nut not required
- Special 20 mm x 26 mm cut out
- There is no IP 65 version of this lock
- Can be used for panel thickness 0.8 mm to 1.8 mm
- Applications: Electric panels, machinery covers



Cut Out



Driver/Head Style

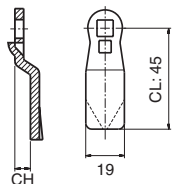
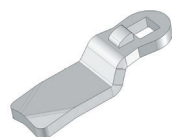


3mm Double Bit

| Item Number | Driver | Cam |
|---------------|----------------|------------------|
| Nylon / Black | | |
| 060111300 | 3mm Double Bit | Select Cam Below |

| Item Number | Driver / Head Style | Cam |
|--------------------|---------------------|------------------|
| Zinc Alloy / Nylon | | |
| 2612000700 | Locking | Select Cam Below |
| 26120201300 | 3mm Double Bit | Select Cam Below |

Steel Cam

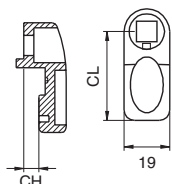


Material: Steel
Finish: Zinc plated
Thickness: 4 mm

| Item Number | CH (mm) | CL (mm) | H (mm) |
|-------------|---------|---------|--------|
| 30403033 | 0 | 45 | 17.5 |
| 30403439 | 1 | 45 | 18.5 |
| 30403159 | 2 | 45 | 19.5 |
| 30403063 | 3 | 45 | 20.5 |
| 30403149 | 4 | 45 | 21.5 |
| 30403160 | 6 | 45 | 23.5 |
| 30403161 | 8 | 45 | 25.5 |
| 30403162 | 10 | 45 | 27.5 |
| 30403045 | 12 | 45 | 29.5 |
| 30403163 | 14 | 45 | 31.5 |
| 30403151 | 16 | 45 | 33.5 |
| 30403165 | 18 | 45 | 35.5 |
| 30403166 | 20 | 45 | 37.5 |

| Item Number | CH (mm) | CL (mm) | H (mm) |
|-------------|---------|---------|--------|
| 30403167 | 22 | 45 | 39.5 |
| 30403168 | 24 | 45 | 41.5 |
| 30403169 | -2 | 45 | 15.5 |
| 30403170 | -4 | 45 | 13.5 |
| 30403171 | -6 | 45 | 11.5 |
| 30403172 | -8 | 45 | 9.5 |
| 30403173 | -10 | 45 | 7.5 |
| 30403174 | -12 | 45 | 5.5 |
| 30403175 | -14 | 45 | 3.5 |
| 30402005 | 6 | 35 | - |
| 30402008 | 4 | 45 | - |
| 30402013 | -4 | 45 | - |

Nylon Cam



| Item Number | CH (mm) | CL (mm) | H (mm) |
|-------------|---------|---------|--------|
| 30402004 | 0 | 35 | 17.5 |
| 30402011 | 0 | 25 | 17.5 |
| 30402005 | 6 | 35 | 23.5 |
| 30402008 | 4 | 45 | 21.5 |
| 30402013 | -4 | 45 | 13.5 |