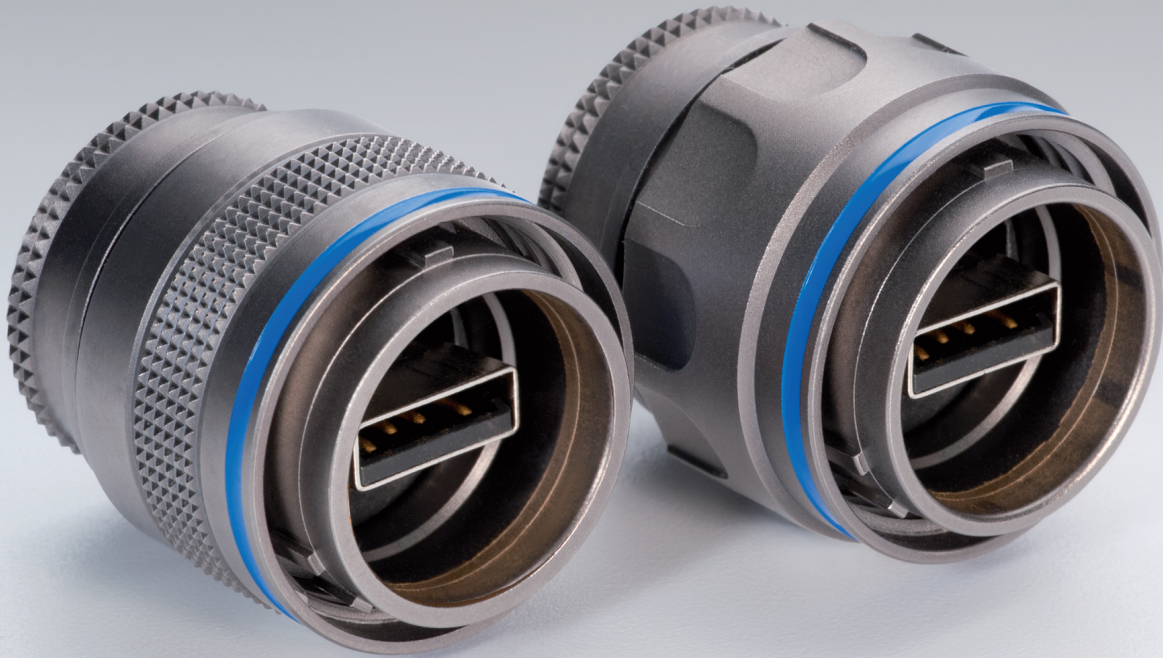


M SERIES USB CONNECTORS RATCHET COUPLING



Rugged Waterproof USB Connector (IP68)

LEMO has added a USB connector to its M Series product. This addition of a USB type A connector offers a reliable solution for harsh environments and when mated the connector meets the IP68 rating. This particular connector is designed for outdoor use including oil/petroleum, automotive, mining, military, marine or any type of application that requires rugged and reliable connections.

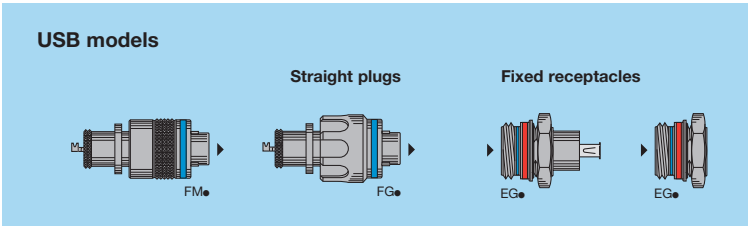
The complete product line includes panel mount sockets, plugs, protective, and caps.

Features & Benefits

- Waterproof IP68 (when mated)
- Rugged, Outdoor, Harsh Environment
- Resistance to Vibration
- Lightweight
- Fast and Easy to Secure USB
- Aluminum or Brass outershell with conductive finish
- Use with off-the-shelf USB cable assemblies
- Easy to Use
- USB 2.0

This new addition to the M Series is just another product built by LEMO with Quality, Reliability and Safety!

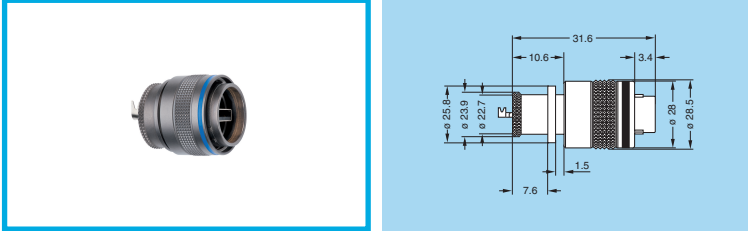
Interconnections



Models

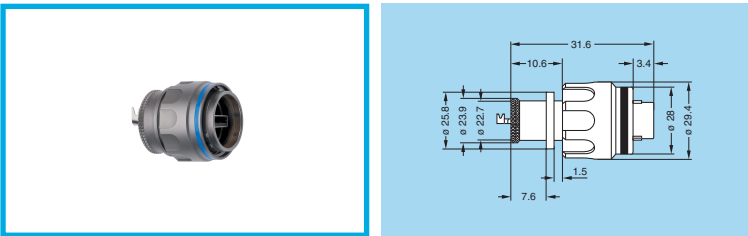
FM•LM.U2A.XPAT

Straight plug, key (W) or key (R) with knurled grip and mold stop – cable attach; solder



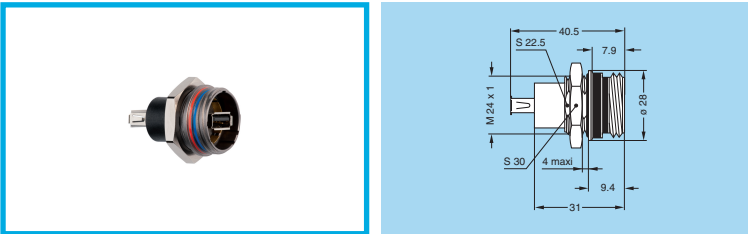
FG•LM.U2A.XPAT

Straight plug, key (W) or key (R) with arctic grip and mold stop – cable attach; solder



EG•LM.U2A.XPP

Fixed receptacle, female to female, nut fixing, key (W) or key (R) – USB connector socket



EG•LM.U2A.XPL

Fixed receptacle, nut fixing, key (W) or key (R) wire attach (solder)

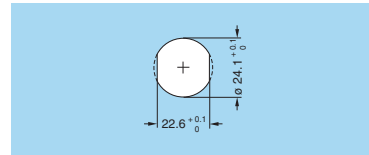


Insert configuration

Male front view	Female front view	Reference	Number of contacts	Solder contact	AWG	Test voltage (kV rms) ¹⁾ Contact-contact	Test voltage (kV rms) ¹⁾ Contact-shell	Rated current (A) ¹⁾
		U2A	4	•	-	1.20	0.95	n.a.

Note: 1) Test voltage according to IEC 60512-2 test 4a.

Cut-outs



Mounting nut torque (on panel)

Torque (Nm)
6.5

Alignment Key and Polarized Keying System

Front view receptacle	Model	Nb of keys	Angles				Color code	Contact type	
			α	β	γ	δ		Plug	Receptacle
	•W	5	95°	115°	35°	25°	blue	male	female
	•R		105°	115°	30°	20°	yellow	male	female

Cable Termination Side



LEMO USA

P.O. Box 2408, Rohnert Park, CA 94927-2408
Tel: 707.578.8811 800.444.5366 Fax: 707.578.0869
info@lemousa.com