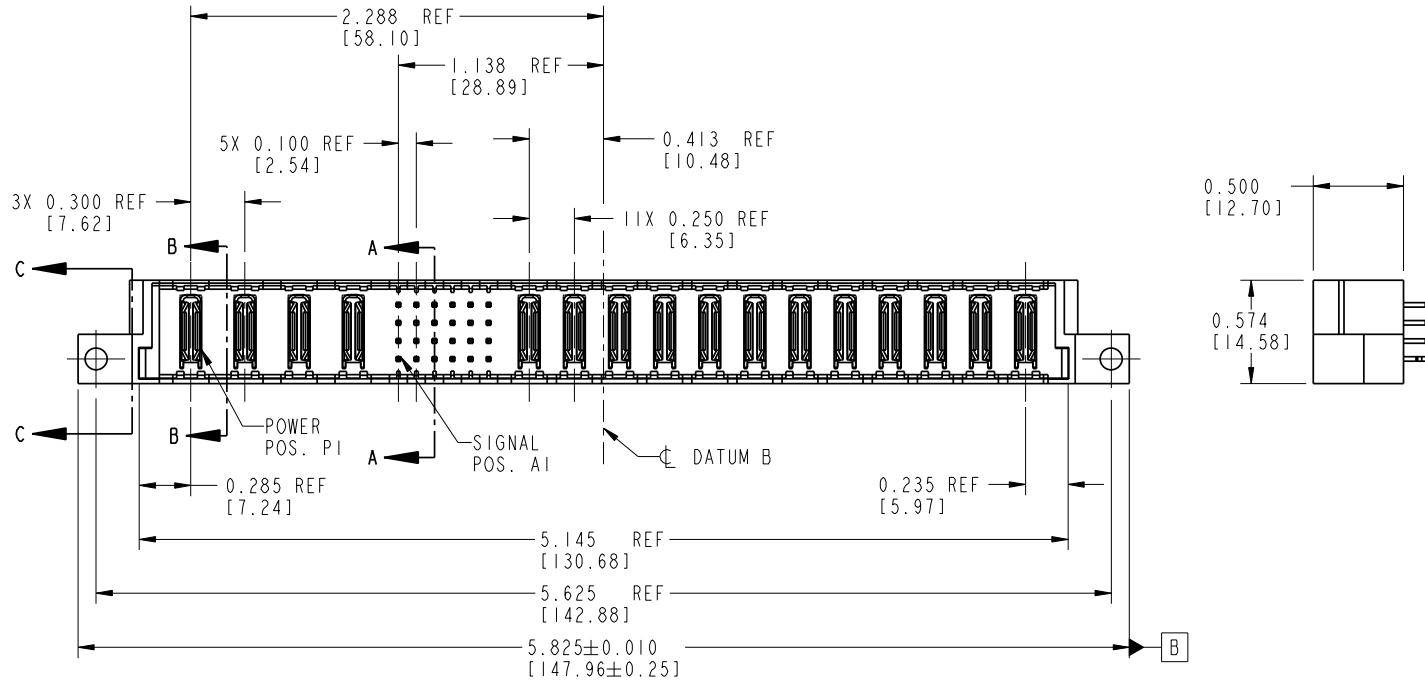


Tous droits strictement réservés. Reproduction ou communication à des tiers interdite sous quelque forme que ce soit sans autorisation écrite du propriétaire. Propriété de c FCI. Droits de reproduction FCI.

All rights strictly reserved. Reproduction or issue to third parties in any form without written authority from the proprietor. Property of FCI. Copyright FCI.

PRODUCT NO. 51963-005-- NOTE 3	ROWS DUBA	E1	POWER				SIGNAL						POWER						E2	PRINTING		
			P1	P2	P3	P4	1	2	3	4	5	6	P5	P6	P7	P8	P9	P10		P11	P12	P13



PRELIMINARY

CODE	DIM "M" MATING LENGTH	CONTACT TYPE
E	0.270 [6.86]	SIGNAL
PA	N/A [N/A]	POWER
HA	N/A [N/A]	HOLD-DOWN

mat'l code				SEE NOTE 2		tolerances unless otherwise specified		CUSTOMER	
lir	ecn no.	dr	date	linear	angles	.XX±.01/0.X±0.3		COPY	
A	V03-1075	TAB	09/26/03			.XXX±.005/0.XX±0.13		projection	
B	DG05-0506	Ryan	11/28/05			.XXX±.002/0.XXX±0.051		INCH/MM	
				dr	chr	0°±2°		scale	
				engr	appd	T. BRUNGARD 08/22/03		1:1	
						M. MOSTOLLER 08/22/03			
						M. MOSTOLLER 08/22/03			
sheet index	revision	B	B	B	B				
	sheet	1	2	3	4				

www.fciconnect.com		title		product family		code	
4ACP + 24S + 12P		VERTICAL SOLDER HEADER		PwrBlade		213	
size		dwg no		sheet		1 of 4	
A		51963-005					

sheet index	revision	B	B	B	B				
	sheet	1	2	3	4				

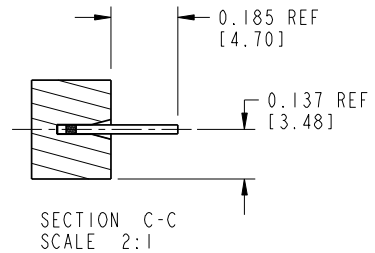
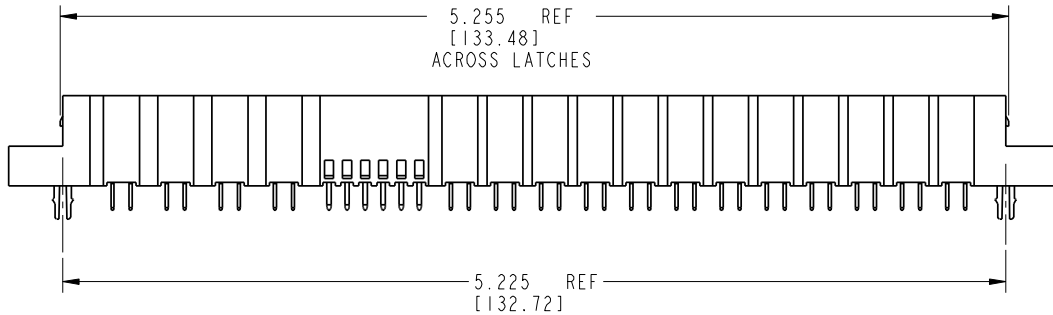
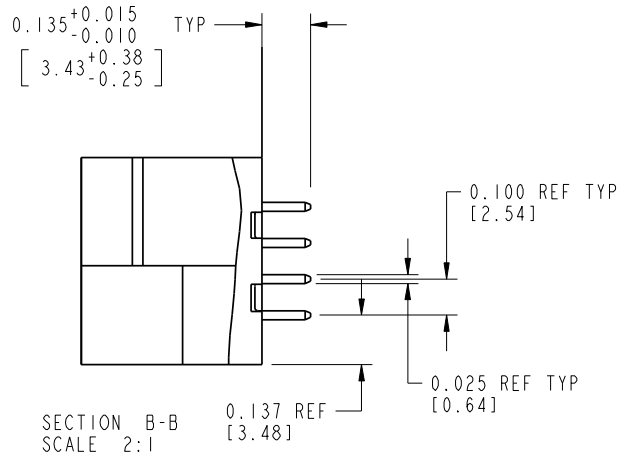
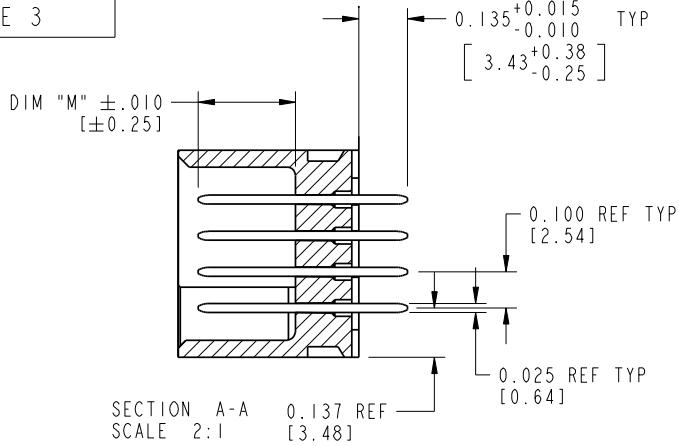
cage code 22526

Pro/E

Tous droits strictement reserves. Reproduction ou communication a des tiers interdite sous quelque forme que ce soit sans autorisation écrite du propriétaire. Propriete de c FCI. Droits de reproduction FCI.

All rights strictly reserved. Reproduction or issue to third parties in any form without is not permitted without written authority from the proprietor. Property of FCI. Copyright FCI.

PRODUCT NUMBER  
51963-005...  
NOTE 3



PRELIMINARY

mat'l code SEE NOTE 2				tolerances unless otherwise specified		CUSTOMER		 www.fciconnect.com	
lir	ecn no.	dr	date	linear	.XX±.01/0.X±0.3	COPY		projection	title
B					.XXX±.005/0.XX±0.13				4ACP + 24S + 12P
				angles	.XXX±.002/0.XXX±0.051				VERTICAL SOLDER HEADER
				dr	0°±2°				product family
				engr	T. BRUNGARD 08/22/03	INCH/MM			PwrBlade
				chr	M. MOSTOLLER 08/22/03	scale		size	code
				appd	M. MOSTOLLER 08/22/03	1:1		A	213
sheet index	revision sheet							dwg no	sheet
								51963-005	2 of 4

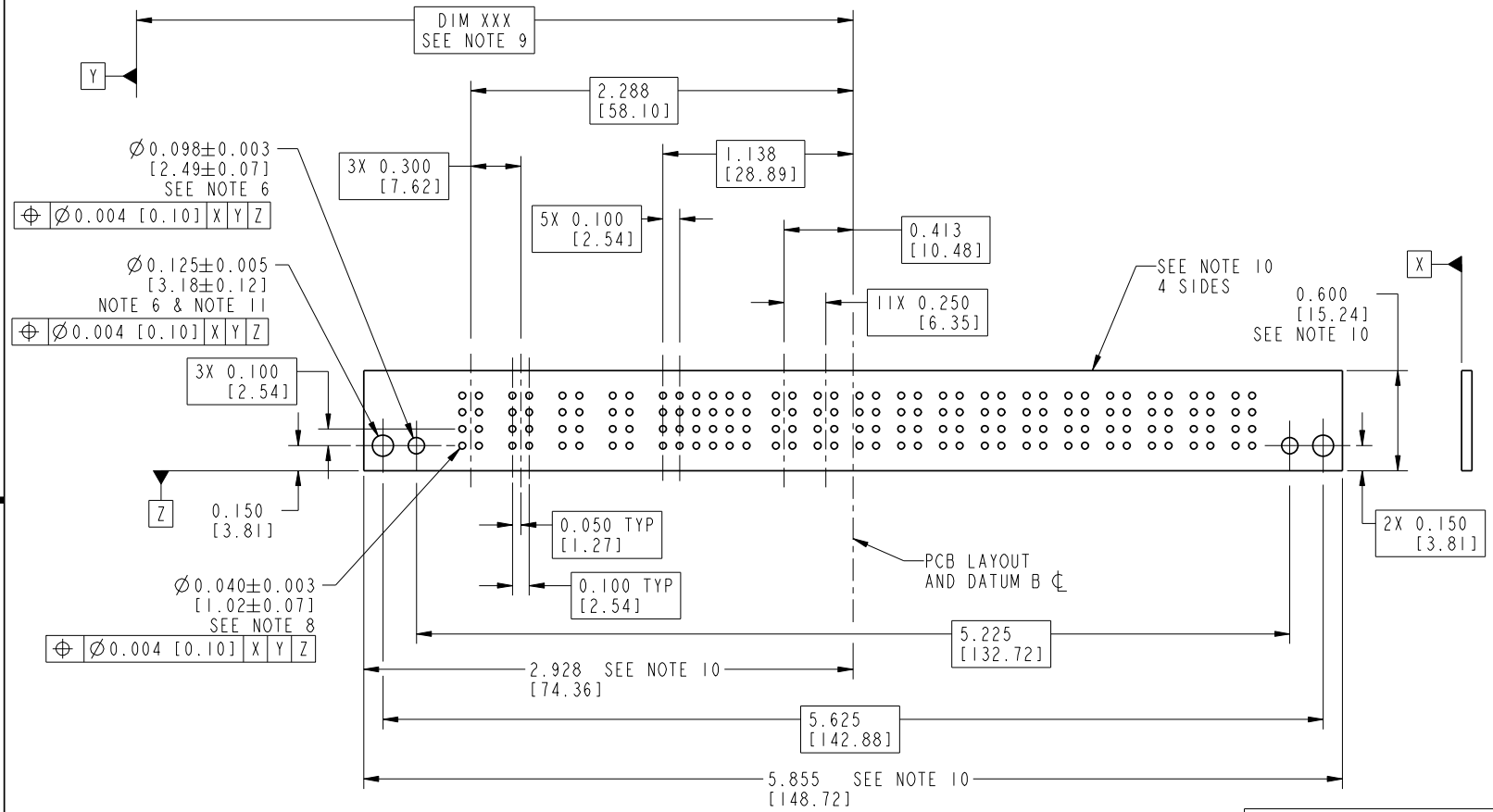
cage code 22526

Pro/E

Tous droits strictement réservés. Reproduction ou communication à des tiers interdite sans quelque forme que ce soit sans autorisation écrite du propriétaire. Propriété de c FCI. Droits de reproduction FCI.

All rights strictly reserved. Reproduction or issue to third parties in any form whatsoever is not permitted without written authority from the proprietor. Property of FCI. Copyright FCI.

PRODUCT NUMBER  
51963-005...  
NOTE 3



PRELIMINARY

mat'l code SEE NOTE 2				tolerances unless otherwise specified		CUSTOMER		 www.fciconnect.com				
lir	ecr no.	dr	date	linear	.XX±.01/0.X±0.3	COPY		projection	 title 4ACP + 24S + 12P VERTICAL SOLDER HEADER			
B					.XXX±.005/0.XX±0.13	INCH/MM				product family PwrBlade	code 213	
					angles	.XXX±.002/0.XXX±0.051	scale 1:1			size	sheet 3 of 4	
					dr	0°±2°				dwg no		
					enr	T. BRUNGARD 08/22/03				51963-005		
				chr	M. MOSTOLLER 08/22/03							
				appd	M. MOSTOLLER 08/22/03							
sheet index	revision sheet											

cage code 22526

**PRODUCT NUMBER**  
 51963-005\_\_  
 NOTE 3

NOTES:

1. DIMENSIONS AND TOLERANCES ARE IN ACCORDANCE WITH ASME Y14.5M, 1994 UNLESS OTHERWISE SPECIFIED.

CONNECTOR NOTES:

2 HOUSING MATERIAL: UL 94 V-0 GLASS FILLED HIGH-TEMP THERMOPLASTIC

POWER CONTACT MATERIAL: COPPER ALLOY  
SIGNAL PIN MATERIAL: COPPER ALLOY

3. PLATING:

51963-005: SIGNAL PIN: 30u"/0.76um Au OVER 50u"/1.27um Ni ON THE CONTACT AREA  
AND 100u"/2.54um SnPb OVER 50u"/1.27um Ni ON THE TERMINATION AREA  
POWER PIN: 30u"/0.76um Au OVER 50u"/1.27um Ni ON THE CONTACT AREA  
AND 100u"/2.54um SnPb OVER 50u"/1.27um Ni ON THE TERMINATION AREA

51963-005LF: SIGNAL PIN: 30u"/0.76um Au OVER 50u"/1.27um Ni ON THE CONTACT AREA  
AND 78u"/2.00um Sn OVER 50u"/1.27um Ni ON THE TERMINATION AREA  
POWER PIN: 30u"/0.76um Au OVER 50u"/1.27um Ni ON THE CONTACT AREA  
AND 78u"/2.00um Sn OVER 50u"/1.27um Ni ON THE TERMINATION AREA

PART NUMBER 51963-005LF MEETS EUROPEAN UNION DIRECTIVE AND OTHER COUNTRY REGULATIONS AS DESCRIBED IN GS-22-008.

THE HOUSING WILL WITHSTAND EXPOSURE TO 260° PEAK TEMPERATURE FOR 10 SECONDS IN A WAVE SOLDER APPLICATION WITH A CIRCUIT BOARD.

4. PRODUCT SPECIFICATION GS-12-149.  
APPLICATION SPECIFICATION BUS-20-067.

5. PACKAGED IN TRAYS.

PCB NOTES:

6. ALL HOLE DIAMETERS ARE FINISHED HOLE SIZE.

7. MOUNTING HOLES, WHERE APPLICABLE, ARE UNPLATED.

8 Ø.0453±.0010 [1.151±0.025] DRILLED HOLES PLATED WITH  
.0003 [0.008] MIN SnPb OVER .001 [0.03]  
TO .003 [0.08] Cu PLATING TO ACHIEVE  
Ø.040±.003 [1.02±.07] HOLE.

9 "DIM XXX" TO BE DETERMINED BY THE CUSTOMER.

10 CONNECTOR KEEP-OUT ZONE.

11 CUSTOMER SUPPLIES (2) #4-40 UNC SCREWS,  
HARDWARE TO MOUNT HEADER TO PC BOARD.

**PRELIMINARY**

mat'l code				SEE NOTE 2		tolerances unless otherwise specified		CUSTOMER		A FCI	
lfr	ecr no.	dr	date	linear	.XX±.01/0.X±0.3	COPY		projection		www.fciconnect.com	
B				angles	.XXX±.005/0.XX±0.13	INCH/MM		title		4ACP + 24S + 12P	
				dr	.XXX±.002/0.XXX±0.051	scale		product family		PwrBlade	
				enrg	0° ± 2°	1:1		size		213	
				chr	T. BRUNGARD 08/22/03			dwg no		sheet	
				appd	M. MOSTOLLER 08/22/03			51963-005		4 of 4	
					M. MOSTOLLER 08/22/03						
sheet index	revision sheet										

Tous droits strictement reserves. Reproduction ou communication a des tiers interdite sous quelque forme que ce soit sans autorisation ecrite du proprietaire. Propriete de c FCI. Droits de reproduction FCI.



All rights strictly reserved. Reproduction or issue to third parties in any form without is not permitted without written authority from the proprietor. Property of FCI. Copyright FCI.