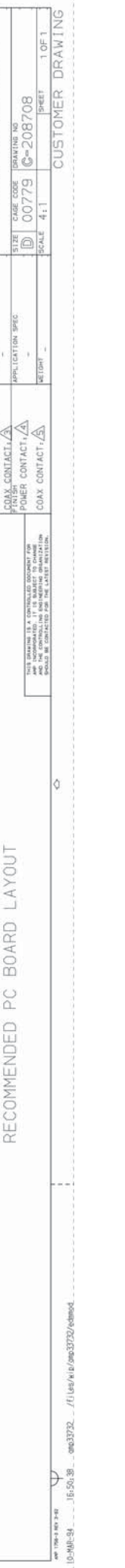
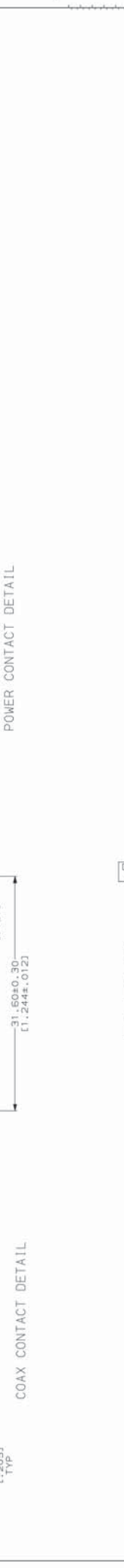


NO	REV	DATE	BY	CHK	APPD
1	BD	37			

REV	DATE	DESCRIPTION
D		REDRAWN WITHOUT CHANGE
E	085 -2	PER EC 0020-200-93

THIS DRAWING IS UNPUBLISHED. RELEASED FOR PUBLICATION BY AMP INCORPORATED. ALL INTERNATIONAL RIGHTS RESERVED. © COPYRIGHT 1981

HOLES LOCATED IN ROWS W & Y FOR ANY CIRCUIT WITH A COAX CONTACT.
 HOLES LOCATED IN ROW X FOR ANY CIRCUIT WITH A POWER CONTACT.
 BODY, PHOSPHOR BRONZE PER QQ-B-750.
 HOOD, STAINLESS STEEL PER QQ-S-766.
 CENTER CONDUCTOR, BRASS PER QQ-B-626.
 SHELL, BRASS PER MIL-C-50.
 0.76µm (.00030) MIN GOLD PER MIL-G-45204 FOR A LENGTH OF 5.08 (.200) MIN FROM MATING END OF HOOD. (L.000150) MIN TIN-LEAD PER MIL-T-10727 FOR A LENGTH OF 4.98 (.196) MIN FROM OPPOSITE END, BOTH OVER 1.27µm (.00050) MIN NICKEL PER QQ-N-290.
 CENTER CONDUCTOR, 1.27µm (.00050) MIN GOLD PER MIL-G-45204 OVER 0.76µm (.00030) MIN NICKEL.
 SHELL, 0.39µm (.00015) MIN GOLD PER MIL-G-45204 OVER 1.27µm (.00050) MIN NICKEL PER QQ-N-290.



THIS DRAWING IS A CONTROLLED DOCUMENT FOR AMP INCORPORATED. IT IS SUBJECT TO CHANGE AND SHOULD BE CONTROLLED FOR THE LATEST REVISION.

OBsolete	COAX	POWER	POWER	208708-2
COAX	COAX	COAX	COAX	208708-1
TYPE OF CONTACTS LOADED				PART NO
COAX #3	COAX #2	COAX #1		
AMP AMP Incorporated Harrisburg, PA 17105-3608				
NAME				
SOCKET HEADER ASSEMBLY, 3 POSN, COAX, METRIMATÉ				
SIZE	CAGE CODE	DRAWING NO		
D	00779	C-208708		
SCALE	4:1	SHEET	1 OF 1	