

PART NUMBER	REV	FIRST USED	TERMINATOR	FEED TYPE	DESCRIPTION
1339556-1	A		BENCH & LEADMAKER	MECH POST FEED	HD-I APPLICATOR
7-1339556-1	A		BENCH & LEADMAKER	MECH POST FEED	-1 AND SPARE PARTS
7-1339556-7	A		-	-	SPARE PARTS KIT

CRIMP DATA AMP TERMINAL AMP CRIMP SPECS

TERMINAL NAME: .180ø ([4.57] SHUR PLUG RECEPTACLE

CRIMP	SIZE	TYPE	RANGE
WIRE	2.29 [0.090 IN]	F	0.50-1.50mm ² or 20-16 AWG
INSUL	3.56 [0.140 IN] ⁴	SCROLL	1.45-2.40 [0.057-.094 IN] ⁴
WIRE STRIP LENGTH	REFER TO APPL SPEC		
APPL INSTRUCTION	408-8323		

TERMINAL	FEED
APPL SPEC 114-2017	22.73 [0.895 IN]

TERMINALS APPLIED

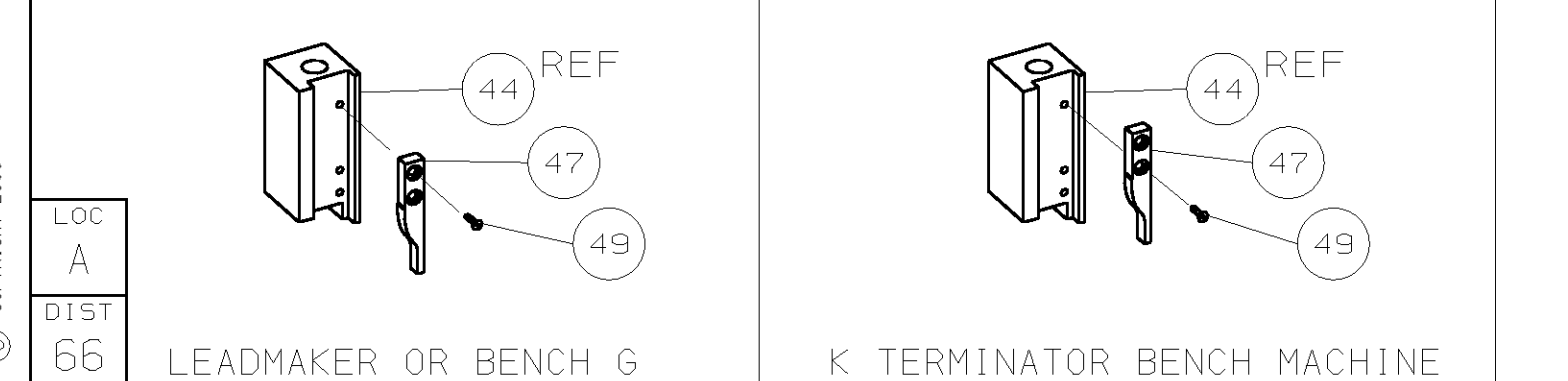
TERMINAL	DESCRIPTION	TERMINATOR	FEED TYPE	DESCRIPTION
152403	-	-	-	-
152404	-	-	-	-
150628	-	-	-	-
150639	-	-	-	-
-	-	-	-	-
-	-	-	-	-
-	-	-	-	-
-	-	-	-	-
-	-	-	-	-
-	-	-	-	-
-	-	-	-	-

WIRE SIZE	CRIMP HEIGHT	PIN PN AND LENGTH [IN]
mm ² AWG		
1.50mm ²	1.83 ±0.05 [0.072 ±0.002 IN]	8-354778-3 [0.2910]
16AWG	1.75 ±0.05 [0.069 ±0.002 IN]	8-354778-9 [0.2940]
1.00mm ²	1.65 ±0.05 [0.065 ±0.002 IN]	9-354778-7 [0.2980]
18AWG	1.57 ±0.05 [0.062 ±0.002 IN]	354779-4 [0.3010]
0.75mm ²	1.55 ±0.05 [0.061 ±0.002 IN]	354779-7 [0.3025]
0.50mm ² or 20AWG	1.47 ±0.05 [0.058 ±0.002 IN]	1-354779-3 [0.3055]
-	-	-
-	-	-
-	-	-
-	-	-
-	-	-
-	-	-
-	-	-
-	-	-
-	-	-
-	-	-

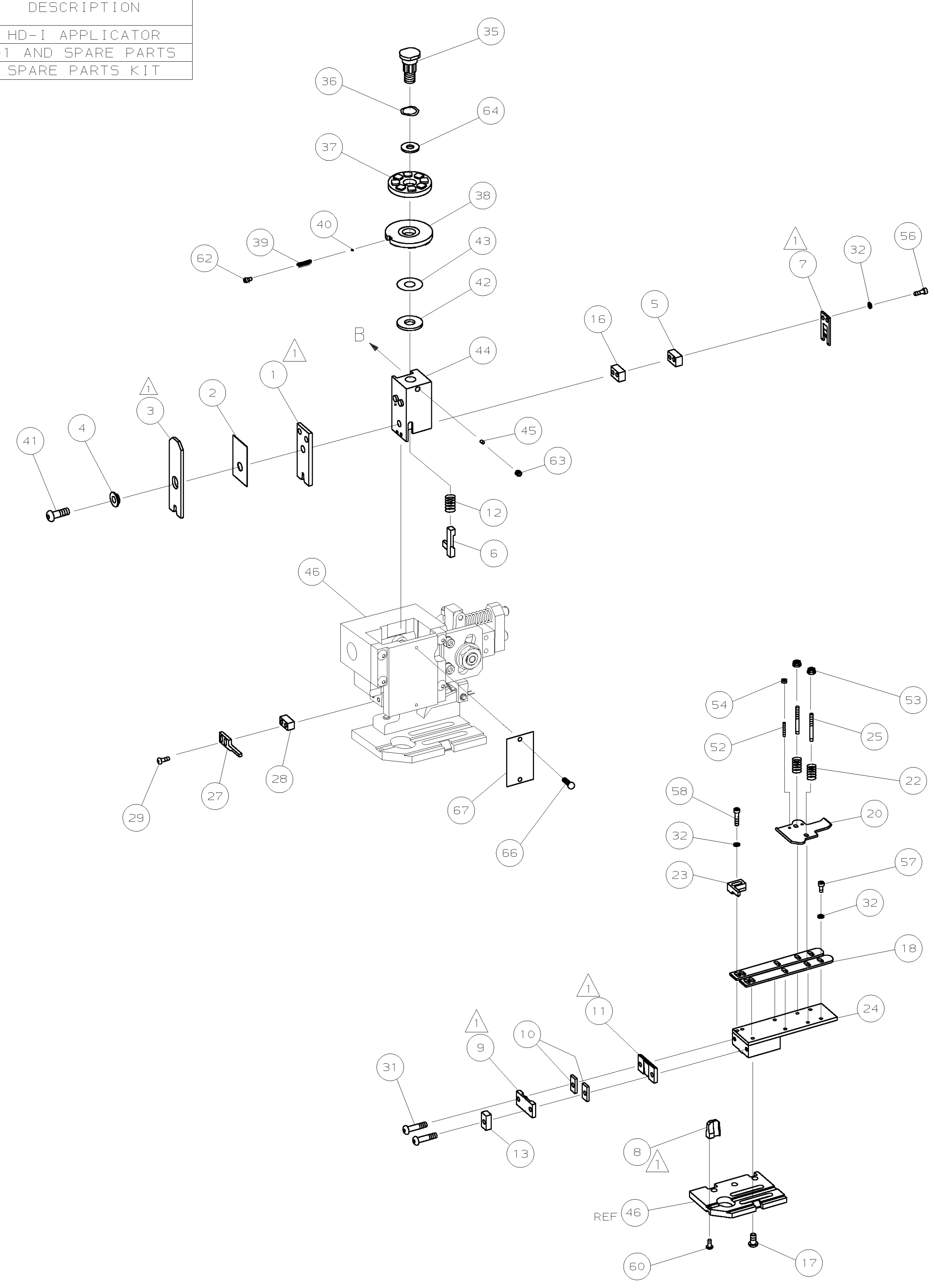
- RECOMMENDED SPARE PARTS.
- GREASE RAM, CAM, CAM FOLLOWER AND FEED ROD LIGHTLY.
 - LUBRICATE DAILY PER THE APPLICATOR INSTRUCTION SHEET SUPPLIED WITH THE APPLICATOR.
- ⁴ THIS APPLICATOR HAS BEEN DESIGNED TO APPLY WIRES WITH THIN WALL (FLR) INSULATION. THE INSULATION CRIMP & APPLICABLE INSULATION RANGE MAY NOT CONFORM TO PARAMETERS LISTED IN THE APPLICATION SPECIFICATION.

VIEW B ROTATED 180°

POST-FEED 40 mm STROKE POST-FEED 30 mm STROKE



LOC A
D1ST 66
AMP 1756 REV 3-92 31-MAY-01 15:36:23 eb003420



QTY	REQD PER ASSY	PART NO	DESCRIPTION	ITEM NO		
-	1	1	1339556	PRINT, APPLICATOR LOG SHEET	73	
-	1	1	1338705-2	DOCUMENTATION PACKAGE	72	
-	-	-	-	-	70	
-	-	-	-	-	68	
-	-	-	-	-	69	
-	1	1	461264-1	PLATE, IDENTIFICATION	67	
-	2	2	21017-2	SCR,DRIVE (#2X.19) ID PLATE	66	
-	-	-	-	-	65	
-	1	1	986950-1	WASHER, FLAT PRECISION	64	
-	1	1	3-18031-0	SCR,SKT SET (M6X6) RAM	63	
-	1	1	18023-9	SCR,SKT CAP (M4X6) CP D5C	62	
-	-	-	-	-	61	
-	1	1	18024-7	SCR,BHC (M4X10) ANVIL	60	
-	-	-	-	-	59	
-	2	2	1-18023-3	SCR,SHC (M4X16) HOLD DOWN	58	
-	5	5	1-18023-0	SCR,SHC (M4X8) STRIP GUIDE	57	
-	2	2	1-18023-3	SCR,SHC (M4X16) SLUG BLADE	56	
-	-	-	-	-	55	
-	2	2	18029-1	NUT, HEX (M3) DRAG	54	
-	2	2	986965-1	NUT, HEX SL (M4) DRAG STUD	53	
-	2	2	2-18032-2	SCR,SKT SET (M3X10) DRAG	52	
-	-	-	-	-	51	
-	-	-	-	-	50	
-	1	1	18024-3	SCR,BHC (M3X10) CAM	49	
-	-	-	-	-	48	
-	1	1	1338676-1	CAM, POST-FEED 30 & 40 mm ST	47	
-	1	1	1338662-1	APPLICATOR, BASIC (SUBASSY)	46	
-	1	1	690191-1	PLUG, NYLON	45	
-	1	1	1320998-1	RAM	44	
-	1	1	690125-1	WASHER, LAMINATED	43	
-	1	1	690124-1	WASHER, RAM	42	
-	1	1	2-18024-6	SCREW,BHC (M8X25) CRIMPER	41	
-	1	1	23241-1	BALL, STEEL	40	
-	1	1	2-22278-7	SPRING, COMPRESSION	39	
-	1	1	1320922-1	DISC, INSULATION	38	
-	1	1	354777-1	WIRE DISC, PLASTIC	37	
-	1	1	22480-5	WASHER, SPRING	36	
-	1	1	690212-1	POST, RAM	35	
-	-	-	-	-	34	
-	-	-	-	-	33	
-	9	9	18025-2	WASHER, LOCK (M4) SHEAR BL	32	
-	2	2	1-18024-0	SCR,BHC (M4X20) SHEAR PL	31	
-	-	-	-	-	30	
-	2	2	18024-8	SCR,BHC (M4X12) STRIPPER	29	
-	1	1	3-690451-2	SPACER, STRIPPER	28	
-	1	1	240639-1	STRIPPER	27	
-	-	-	-	-	26	
-	2	2	1320906-1	DRAG, STUD	25	
-	1	1	1320995-1	STRIP GUIDE	24	
-	1	1	240825-2	PLATE, STRIP HOLD DOWN	23	
-	2	2	4-22281-1	SPRING, DRAG	22	
-	-	-	-	-	21	
-	1	1	1338665-1	DRAG, STOCK	20	
-	-	-	-	-	19	
-	2	2	1338663-5	GUIDE, LOWER STRIP	18	
-	4	4	1-18024-8	SCR,BHC (M6X12) STRIP 6D PL	17	
-	1	1	1338708-1	SPACER, SLUG BLADE	16	
-	-	-	-	-	15	
-	-	-	-	-	14	
-	1	1	690481-4	SPACER, HOLD DOWN	13	
-	1	1	23846-1	SPRING, HOLD DOWN	12	
-	1	1	240644-1	PLATE, REAR SHEAR	11	
-	2	2	240645-1	SPACER, SHEAR PLATE	10	
-	1	1	1-690482-2	PLATE, FRONT SHEAR	9	
-	1	2	1	1333217-8	ANVIL	8
-	1	1	1	690474-7	BLADE, SLUG	7
-	1	1	1	455892-5	HOLD DOWN, TERMINAL	6
-	1	1	1	4-240641-5	SPACER, SLUG BLADE	5
-	1	1	1	238009-1	SPACER, BLOCK CRIMPER	4
-	1	2	1	2-576246-1	CRIMPER, INSULATION	3
-	1	1	1	455888-7	SPACER, CRIMPER	2
-	1	2	1	2-456406-3	CRIMPER, WIRE	1

REVISION OF EACH ASSY NO (WHEN BLANK, USE DWG REVISION)

QTY REQD PER ASSY PARTS LIST

DIMENSIONS: mm [INCHES]	MATL	HT TR	FIN
DO NOT SCALE PRINT.			
TOLERANCES UNLESS OTHERWISE SPECIFIED:			
1 PLC DEC ±			
2 PLC DEC ±			
3 PLC DEC ±			
ANGLES ±			
SURF TEXTURE:			
REMOVE BURRS, BREAK SHARP EDGES RO.38 MAX			

DR M.CLIFFORD 12APR01 APP F.BACKHURST 12APR01

CHK - REL 31-05-01 M.CLIFFORD

NAME: END FEED HD-I APPLICATOR MACHINE REF: HD-I APPL

SCALE: - DWG NO: 1339556 SHEET 1 OF 1 REV A

CASE CODE: 00779 CUSTOMER AND ASSEMBLY DRAWING RESTRICTED TO

THIS DRAWING IS A CONTROLLED DOCUMENT.

LAYOUT L1339556
SET UP GAGE 458638-3

THIS DRAWING IS UNRELEASED.
RELEASED FOR PUBLICATION 2000
BY AMP INCORPORATED. ALL RIGHTS RESERVED.

1339556

D

C

B

A