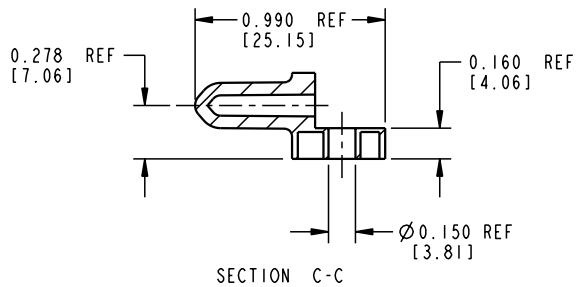
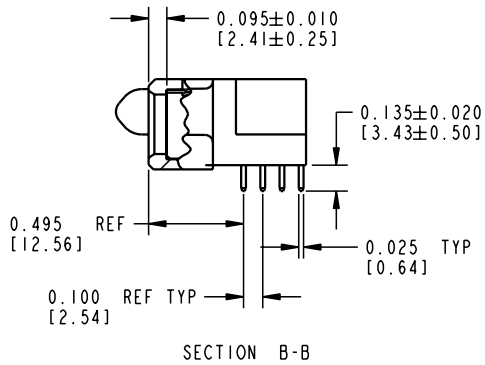
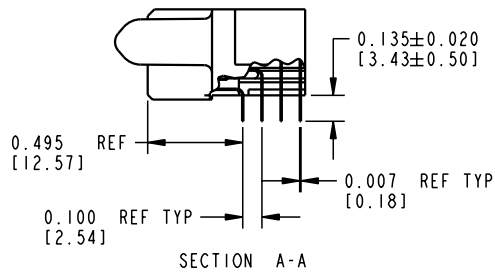


Tous droits strictement réservés. Reproduction ou communication o des tiers interdite sous quelque forme que ce soit sans autorisation écrite du propriétaire. Propriete de c FCI. Droits de reproduction FCI.



All rights strictly reserved. Reproduction or issue to third parties in any form whatever is not permitted without written authority from the proprietor. Property of FCI. Copyright FCI.

PRODUCT NUMBER
51875-XXX

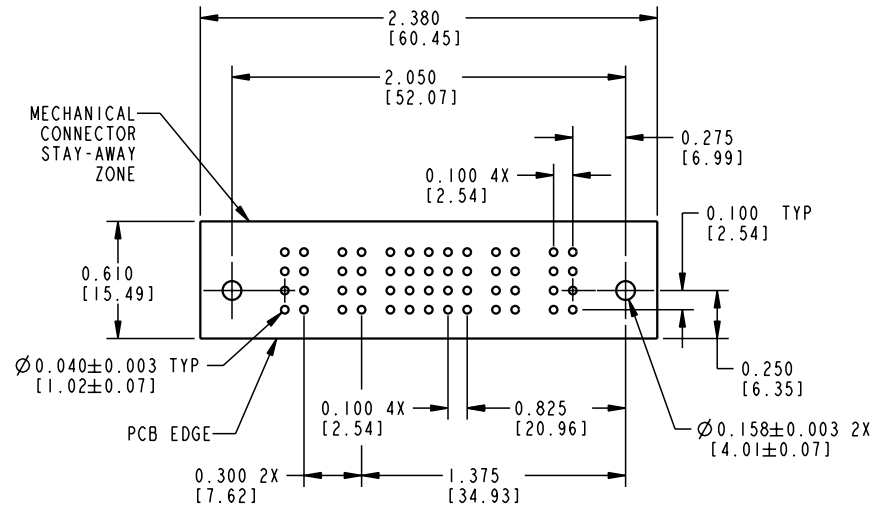


CONNECTOR NOTES:

- HOUSING MATERIAL: UL 94 V-0 GLASS FILLED HIGH TEMP THERMOPLASTIC
POWER CONTACT MATERIAL: COPPER ALLOY
SIGNAL CONTACT MATERIAL: COPPER ALLOY
- PLATING:
SIGNAL PINS: 30u"/0.76u Au OVER 50u"/1.27u Ni
POWER CONTACTS: 50u"/1.27u Ni UNDER ALL:
WITH 30u"/0.76u Au ON CONTACT AREA
AND SnPb ON PCB INTERFACE
- "MANUFACTURER'S" NAME, P/N, AND DATE CODE TO APPEAR ON THIS SURFACE
- PRODUCT SPECIFICATION GS-12-149

PCB NOTES:

- ALL DIMENSIONS ARE BASIC UNLESS OTHERWISE SPECIFIED.
- ALL THROUGH HOLES ARE LOCATED WITH A TRUE POSITION OF 0.004 [0.10]
- ALL HOLE DIAMETERS ARE FINISHED HOLE SIZE
- Ø0.158 [4.01] THROUGH HOLES ARE UNPLATED.
- Ø0.0453±0.0010 [1.151±0.025] DRILLED HOLES PLATED WITH 0.0003 [0.008] MIN SnPb OVER 0.001 [0.03] TO 0.003 [0.08] Cu PLATING TO ACHIEVE A Ø0.040±0.003 [1.02±0.07] HOLE.



RECOMMENDED PCB LAYOUT

mat'l code				tolerances unless otherwise specified		CUSTOMER COPY		FCI ELECTRONICS www.fciconnect.com	
ltr	ecr no.	dr	date	linear	.XX±.01/.X±.3	projection		title 2P + 20S + 2P RIGHT ANGLE SPECIAL RECEPT	
C				angles	.XXX±.005/.XX±.13 .XXXX±.0020/.XXX±.051	INCH / MM		product family PwrBlade	code 213
				dr	C. BAROT 10-11-00	scale 1:1		size A	dwg no 51875
				enrg	J. DODDS 10-11-00				
				chr	J. DODDS 10-11-00				
				appd	J. DODDS 10-11-01				
sheet index	revision sheet							cage code 22526	

Tous droits strictement réservés. Reproduction ou communication o des tiers interdite sous quelque forme que ce soit sans autorisation écrite du propriétaire. Propriete de c FCI. Droits de reproduction FCI.

All rights strictly reserved. Reproduction or issue to third parties in any form whatever is not permitted without written authority from the proprietor. Property of FCI. Copyright FCI.



PRODUCT No.	ROWS	POWER			SIGNAL				POWER			
		E2	P4	P3	5	4	3	2	1	P2	P1	E1
51875-001	D C B A		PC	PC	H	H	H	H	H	PC	PC	

PRODUCT No.
51875-002

FOR INTERNAL USE ONLY

ITEM NO.	CONTACT TYPE
PC	POWER
E	SIGNAL
F	SIGNAL
G	SIGNAL
H	SIGNAL

mat'l code				NOTE 1		tolerances unless otherwise specified		CUSTOMER		ELECTRONICS www.fciconnect.com	
ltr	ecn no.	dr	date	linear	.XX±.01/.X±.3		COPY		title 2P + 20S + 2P RIGHT ANGLE SPECIAL RECEPT		
C					.XXX±.005/.X±.13		projection				
				angles	.XXX±.0020/.XXX±.051				product family PwrBlade code 213		
					0°±2°						
				dr	C. BAROT	10-11-00	INCH / MM		size		A 51875 sheet 3
				engr	J. DODDS	10-11-00	scale		dwg no		
				chr	J. DODDS	10-11-00	1:1				
				appd	J. DODDS	10-11-01					
sheet index	revision sheet										

form no. 7530-001-103

cage code 22526